

STATE OF ILLINOIS  
DEPARTMENT OF TRANSPORTATION

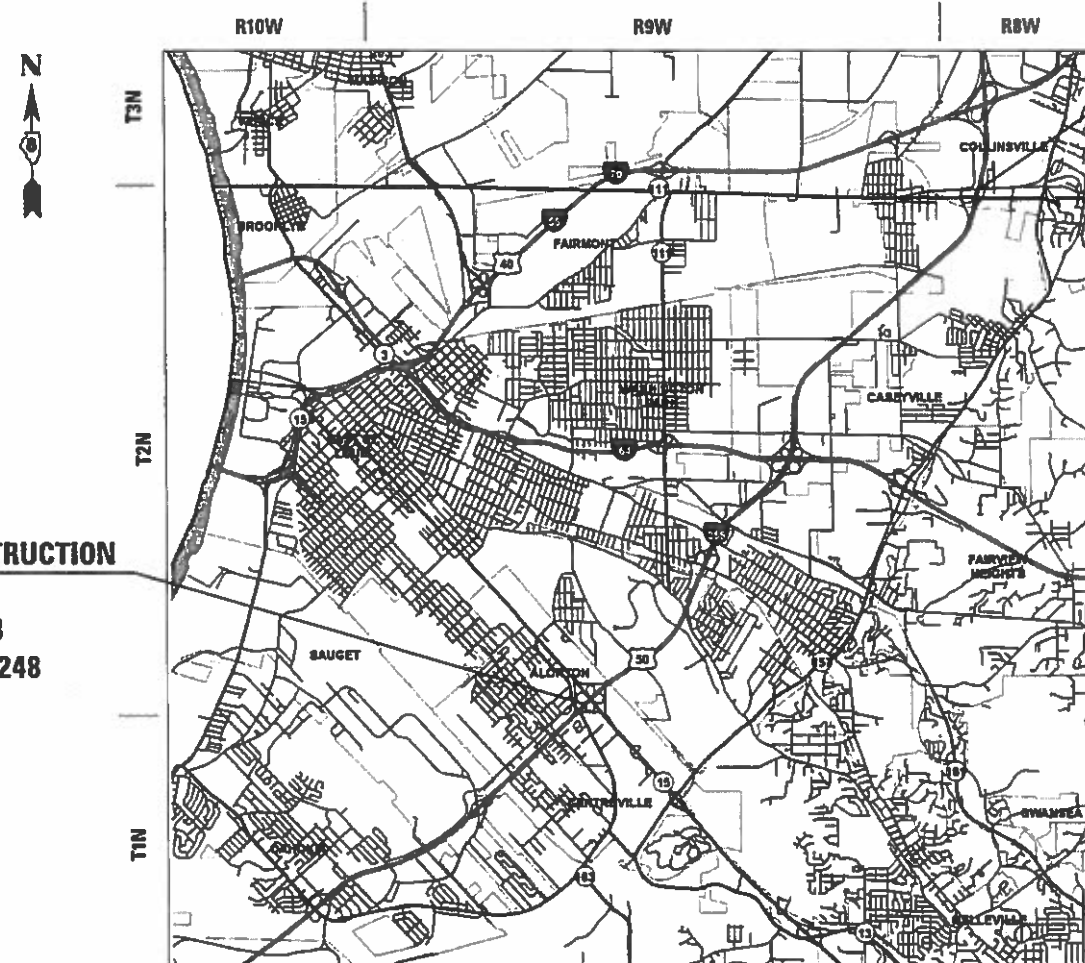
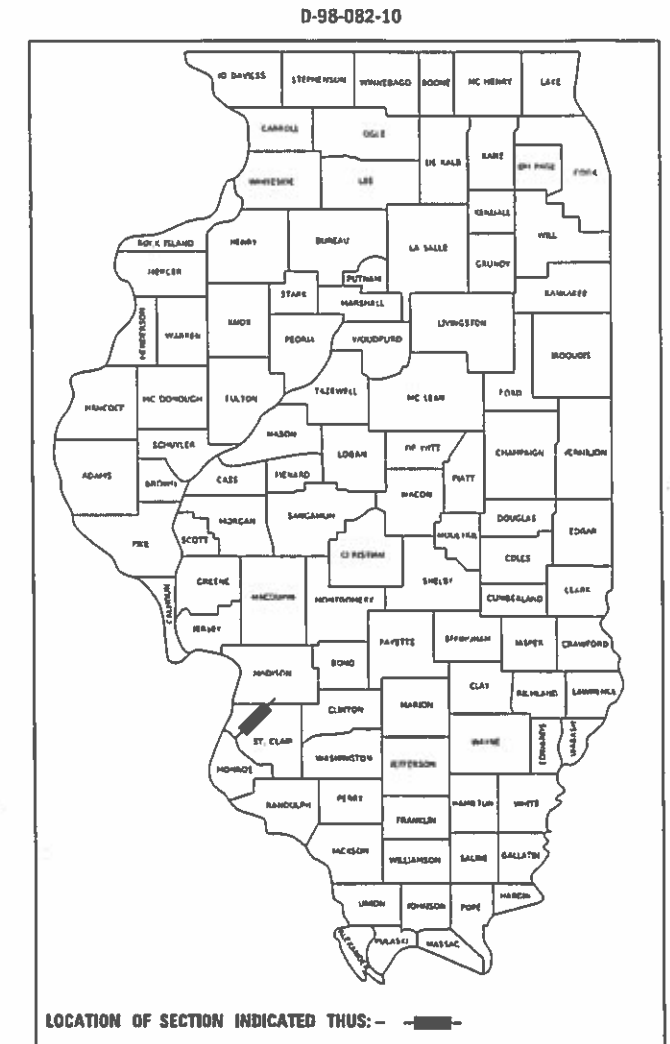
**PROPOSED  
HIGHWAY PLANS**

FAI ROUTE 255 (I-255)  
SECTION 82-(3,2,1)RS  
PROJECT NHPP-UI98(917)  
RESURFACING AND BRIDGE REPAIR  
ST. CLAIR COUNTY

C-98-274-18

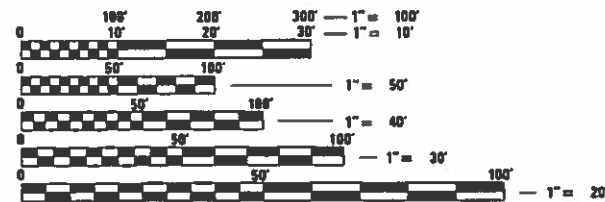
F.A.I. RTE.	SECTION	COUNTY	TOTAL SHEETS	SHEET NO.
255	82-(3,2,1)RS	ST. CLAIR	623	1
		ILLINOIS	CONTRACT NO. 76E13	

FOR INDEX OF SHEETS, SEE SHEET NO. 2



**END CONSTRUCTION**  
STA. 1244 + 25  
LAT. 38.659112  
LONG. -90.031245

**BEGIN CONSTRUCTION**  
STA. 814 + 00  
LAT. 38.581483  
LONG. -90.109248



FULL SIZE PLANS HAVE BEEN PREPARED USING STANDARD ENGINEERING SCALES. REDUCED SIZED PLANS WILL NOT CONFORM TO STANDARD SCALES. IN MAKING MEASUREMENTS ON REDUCED PLANS, THE ABOVE SCALES MAY BE USED.

J.U.L.I.E.  
JOINT UTILITY LOCATION INFORMATION FOR EXCAVATORS  
1-800-892-0123  
OR 811

PROJECT ENGINEER: HERVE GELIN (618) 346-3179  
PROJECT MANAGER: BILLIE OWEN (618) 346-3209

CONTRACT NO. 76E13

STATION EQUATIONS  
839 + 21.47 BK = 839 + 17.83 AH  
889 + 70.10 BK = 889 + 83.19 AH  
948 + 94.57 BK = 1002 + 29.7 AH

GROSSNET LENGTH = 7.136 MILES

LOCATION MAP NOT TO SCALE

STATE OF ILLINOIS  
DEPARTMENT OF TRANSPORTATION

SUBMITTED Aug. 7 2019  
Ruth Roberts  
REGIONAL ENGINEER

Oct 4 2019  
[Signature]  
ENGINEER OF DESIGN AND ENVIRONMENT

Oct 4 2019  
[Signature]  
DIRECTOR OF HIGHWAYS PROJECT IMPLEMENTATION

PRINTED BY THE AUTHORITY  
OF THE STATE OF ILLINOIS

### INDEX OF SHEETS

1	COMBINED COVER SHEET
2	INDEX OF SHEETS, HIGHWAY STANDARDS, GENERAL NOTES, COMMITMENTS, AND LOCATION MAP
3-27	COMBINED SUMMARY OF QUANTITIES
1-280	PLAN SET 1 OF 2 - SOUTH SECTION 82-(3,2)RS
1-316	PLAN SET 2 OF 2 - NORTH SECTION 82-1RS

### HIGHWAY STANDARDS

000001-07	482006-03	631011-10	701400-09	704001-08
001001-02	482011-03	631026-06	701401-12	720001-01
001006	483001-05	631031-15	701402-12	720006-04
202001-01	542301-03	631033-07	701411-09	720011-01
280001-07	542401-03	635001-02	701428-01	720021-02
406001-06	601001-05	637006-04	701446-09	725001-01
420001-09	601101-02	642001-02	701451-05	780001-05
420101-06	606001-07	665001-02	701456-05	781001-04
424001-11	606101-05	701001-02	701501-06	782001-01
424031-02	606301-04	701006-05	701601-09	782006
442001-04	610001-08	701101-05	701606-10	886001-01
442101-09	630001-12	701201-05	701701-10	886006-01
442201-03	630201-07	701321-17	701801-06	BLR 21-9
482001-02	630301-09	701326-04	701901-08	

### GENERAL NOTES

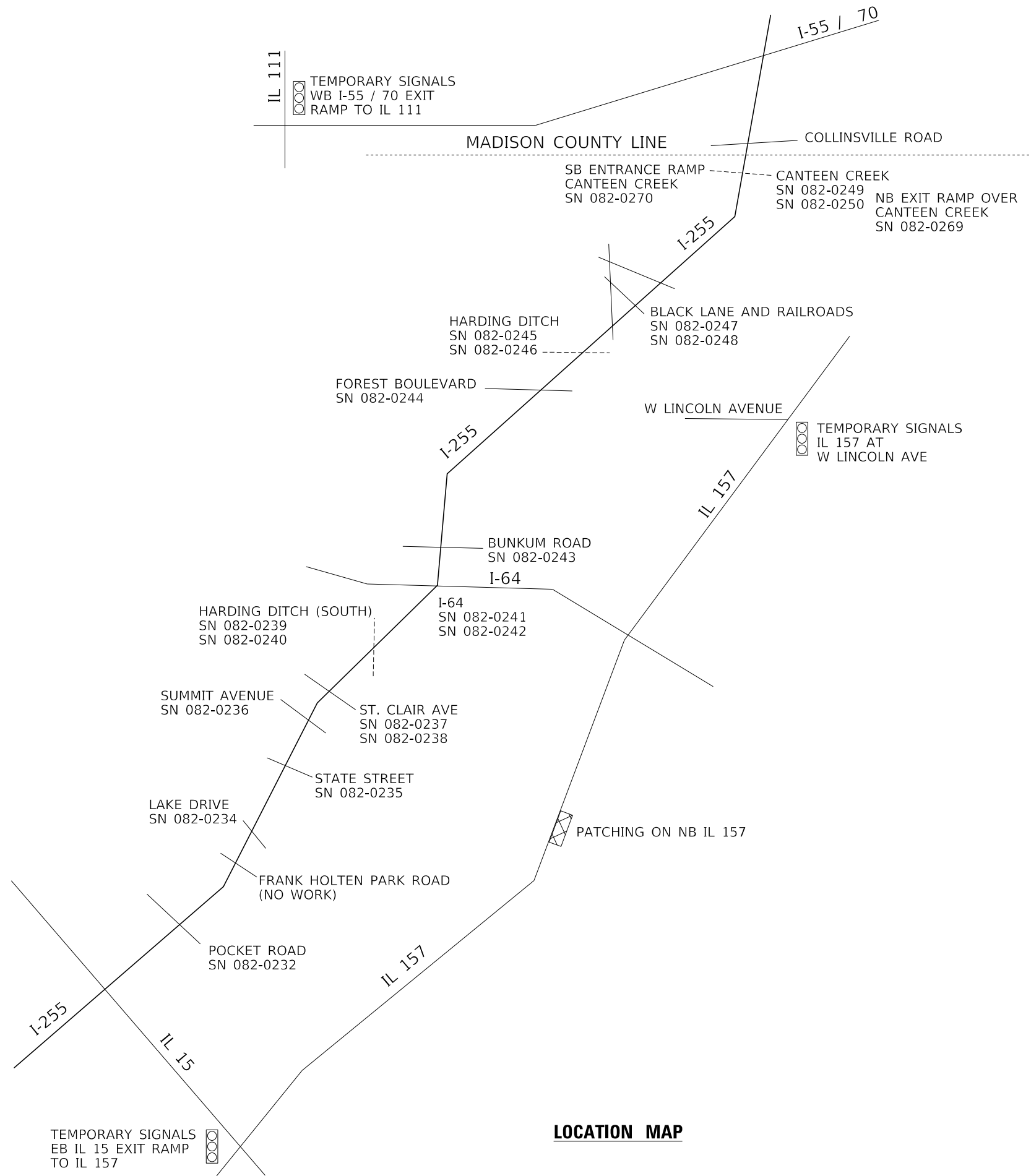
- THIS CONTRACT CONTAINS TWO SEPARATE SETS OF PLANS.
  - PLAN SET 1 OF 2 - SOUTH SECTION 82-(3,2)RS IS FROM IL 15 TO JUST NORTH OF I-64
  - PLAN SET 2 OF 2 - NORTH SECTION 82-1RS IS FROM JUST NORTH OF I-64 TO COLLINSVILLE ROAD
- PLAN SET 2 OF 2 SHALL BE CONSTRUCTED FIRST.
- THE CONTRACTOR SHALL BE AWARE THAT THE PLAN SHEET SCALES ARE DIFFERENT IN EACH SET.

PLAN SET 1 OF 2 - SOUTH SECTION PLAN SHEETS ARE AT 1" = 100' SCALE  
 PLAN SET 2 OF 2 - NORTH SECTION PLAN SHEETS ARE AT 1" = 50' SCALE

- ANY REFERENCE TO POLYMERIZED LEVELING BINDER (MACHINE METHOD), IL-9.5FG, N90 IN THE PLANS SHALL MEAN POLYMERIZED HOT-MIX ASPHALT BINDER COURSE, IL-9.5FG, N90.
- ANY REFERENCE TO POLYMERIZED HOT-MIX ASPHALT SURFACE COURSE, STONE MATRIX ASPHALT, N80 IN THE PLANS SHALL MEAN POLYMERIZED HOT-MIX ASPHALT SURFACE COURSE, STONE MATRIX ASPHALT, 12.5, MIX "E", N80.
- ANY REFERENCE TO POLYMERIZED HOT-MIX ASPHALT SURFACE COURSE, MIX "E", N90 IN THE PLANS SHALL MEAN POLYMERIZED HOT-MIX ASPHALT SURFACE COURSE, IL-9.5, MIX "E", N90

### COMMITMENTS

NONE



**LOCATION MAP**

STATE OF ILLINOIS  
DEPARTMENT OF TRANSPORTATION

INDEX OF SHEETS, HIGHWAY STANDARDS, GENERAL NOTES,  
COMMITMENTS, AND LOCATION MAP

SCALE: SHEET 1 OF 1 SHEETS STA. TO STA.

F.A.I. RTE.	SECTION	COUNTY	TOTAL SHEETS	SHEET NO.
255	82-(3,2,1)RS	ST. CLAIR	623	2
CONTRACT NO. 76E13				
ILLINOIS FED. AID PROJECT				

MODEL: \\MODEL\NAME: FILE: \\NAME: P:\Highway\GIS\MapData\Illinois\gov\PHWDOT\Documents\DOT\_Offices\District 8\Projects\082\76E13\CH-Generate.dgn

MODEL: Default  
 FILE NAME: P:\uplanroom.dwg  
 ILLINOIS.GOV:PWIDOT\Documents\DOT\_Offices\District 8\Projects\076E13\CADDData\CAD\Sheet\076E13-ph-500.dgn

CODE NO.	ITEM	UNIT	TOTAL QUANTITY	CONSTRUCTION CODE	
				90% FEDERAL / 10% STATE	
				ROADWAY	BRIDGE
				0005 URBAN	0013 URBAN
* X5060611	CONTAINMENT AND DISPOSAL OF NON-LEAD PAINT CLEANING RESIDUES NO. 10	L SUM	1		1
* X5060612	CONTAINMENT AND DISPOSAL OF NON-LEAD PAINT CLEANING RESIDUES NO. 11	L SUM	1		1
* X5060614	CONTAINMENT AND DISPOSAL OF NON-LEAD PAINT CLEANING RESIDUES NO. 14	L SUM	1		1
* X5060615	CONTAINMENT AND DISPOSAL OF NON-LEAD PAINT CLEANING RESIDUES NO. 15	L SUM	1		1
* Z0007123	CONTAINMENT AND DISPOSAL OF LEAD PAINT CLEANING RESIDUES NO. 12	L SUM	1		1
* Z0007117	CONTAINMENT AND DISPOSAL OF LEAD PAINT CLEANING RESIDUES NO. 16	L SUM	1		1
* Z0007128	CONTAINMENT AND DISPOSAL OF LEAD PAINT CLEANING RESIDUES NO. 17	L SUM	1		1
* Z0007119	CONTAINMENT AND DISPOSAL OF LEAD PAINT CLEANING RESIDUES NO. 18	L SUM	1		1
* Z0007130	CONTAINMENT AND DISPOSAL OF LEAD PAINT CLEANING RESIDUES NO. 19	L SUM	1		1
* X1400384	LIGHT POLE, ALUMINUM, 45 FT., 2-8 FT. MAST ARMS	EACH	68	68	
X2500005	CLEANING AND PAINTING ALUMINUM RAILING	L SUM	1		1
20200100	EARTH EXCAVATION	CU YD	1720	1720	
20300100	CHANNEL EXCAVATION	CU YD	2616		2616
25000210	SEEDING, CLASS 2A	ACRE	0.9	0.9	

\* SPECIALTY ITEM

USER NAME = owenbj	DESIGNED -	REVISED -
	DRAWN -	REVISED -
PLOT SCALE = 100.0000' / in.	CHECKED -	REVISED -
PLOT DATE = 8/14/2019	DATE -	REVISED -

**STATE OF ILLINOIS  
DEPARTMENT OF TRANSPORTATION**

**SUMMARY OF QUANTITIES**

SCALE: SHEET 1 OF 25 SHEETS STA. TO STA.

F.A.I. RTE.	SECTION	COUNTY	TOTAL SHEETS	SHEET NO.
255	82-(3,2,1)RS	ST. CLAIR	623	3
CONTRACT NO. 76E13			ILLINOIS FED. AID PROJECT	

REV. - MS

MODEL: Default  
 FILE NAME: P:\Highwayroom.dwg  
 ILLINOIS.GOV\PWIDOT\Documents\DOT\_Offices\District 8\Projects\076E13\CADDData\CAD\Sheet\076E13-ph-500.dgn

CODE NO.	ITEM	UNIT	TOTAL QUANTITY	CONSTRUCTION CODE	
				90% FEDERAL / 10% STATE	
				ROADWAY	BRIDGE
				0005 URBAN	0013 URBAN
25000400	NITROGEN FERTILIZER NUTRIENT	POUND	80	80	
25000500	PHOSPHORUS FERTILIZER NUTRIENT	POUND	80	80	
25000600	POTASSIUM FERTILIZER NUTRIENT	POUND	80	80	
25100115	MULCH, METHOD 2	ACRE	0.9	0.9	
25100630	EROSION CONTROL BLANKET	SQ YD	2314	2314	
25100635	HEAVY DUTY EROSION CONTROL BLANKET	SQ YD	1814	1814	
28000250	TEMPORARY EROSION CONTROL SEEDING	POUND	259	259	
28000400	PERIMETER EROSION BARRIER	FOOT	12940	12940	
28000500	INLET AND PIPE PROTECTION	EACH	53	53	
28100105	STONE RIPRAP, CLASS A3	SQ YD	12962	12388	574
28100107	STONE RIPRAP, CLASS A4	SQ YD	2642		2642
28200200	FILTER FABRIC	SQ YD	15590	12388	3202
35100100	AGGREGATE BASE COURSE, TYPE A	TON	1325	1325	
35101600	AGGREGATE BASE COURSE, TYPE B 4"	SQ YD	2765	2765	

REV. - MS

USER NAME = owenbj	DESIGNED -	REVISED -
	DRAWN -	REVISED -
PLOT SCALE = 100.0000' / in.	CHECKED -	REVISED -
PLOT DATE = 8/14/2019	DATE -	REVISED -

**STATE OF ILLINOIS  
DEPARTMENT OF TRANSPORTATION**

**SUMMARY OF QUANTITIES**

SCALE: SHEET 2 OF 25 SHEETS STA. TO STA.

F.A.I. RTE.	SECTION	COUNTY	TOTAL SHEETS	SHEET NO.
255	82-(3,2,1)RS	ST. CLAIR	623	4
CONTRACT NO. 76E13			ILLINOIS FED. AID PROJECT	

MODEL: Default  
 FILE NAME: P:\uplanroom.dat  
 ILLINOIS.GOV\PWIDOT\Documents\DOT\_Offices\District 8\Projects\076E13\CADDData\CAD\Sheets\076E13-ph-500.dgn

CODE NO.	ITEM	UNIT	TOTAL QUANTITY	CONSTRUCTION CODE	
				90% FEDERAL / 10% STATE	
				ROADWAY	BRIDGE
				0005 URBAN	0013 URBAN
35800100	PREPARATION OF BASE	SQ YD	59	59	
35800200	AGGREGATE BASE REPAIR	TON	2180	2180	
40200100	AGGREGATE SURFACE COURSE, TYPE A	TON	1501	1501	
40600290	BITUMINOUS MATERIALS (TACK COAT)	POUND	151998	151998	
40600295	POLYMERIZED BITUMINOUS MATERIALS (TACK COAT)	POUND	251934	251934	
40600400	MIXTURE FOR CRACKS, JOINTS, AND FLANGWAYS	TON	14	14	
40603219	POLYMERIZED HOT-MIX ASPHALT BINDER COURSE, IL-9.5FG, N90	TON	4123	4123	
40600982	HOT-MIX ASPHALT SURFACE REMOVAL - BUTT JOINT	SQ YD	9411	9411	
40600985	PORTLAND CEMENT CONCRETE SURFACE REMOVAL - BUTT JOINT	SQ YD	5088	5088	
40600990	TEMPORARY RAMP	SQ YD	985	985	
40605034	POLYMERIZED HOT-MIX ASPHALT SURFACE COURSE, STONE MATRIX ASPHALT, 12.5,MIX "E",N80	TON	77325	77325	
40604174	POLYMERIZED HOT-MIX ASPHALT SURFACE COURSE, IL-9.5,MIX "E", N90	TON	4217		4217
40800050	INCIDENTAL HOT-MIX ASPHALT SURFACING	TON	73	73	
42000080	PAVEMENT CONNECTOR (PCC) FOR BRIDGE APPROACH SLAB	SQ YD	595	595	

REV. - MS

USER NAME = owenbj	DESIGNED -	REVISED -
	DRAWN -	REVISED -
PLOT SCALE = 100.0000 ' / in.	CHECKED -	REVISED -
PLOT DATE = 8/14/2019	DATE -	REVISED -

**STATE OF ILLINOIS  
DEPARTMENT OF TRANSPORTATION**

**SUMMARY OF QUANTITIES**

SCALE: SHEET 3 OF 25 SHEETS STA. TO STA.

F.A.I. RTE.	SECTION	COUNTY	TOTAL SHEETS	SHEET NO.
255	82-(3,2,1)RS	ST. CLAIR	623	5
CONTRACT NO. 76E13			ILLINOIS FED. AID PROJECT	

CODE NO.	ITEM	UNIT	TOTAL QUANTITY	CONSTRUCTION CODE	
				90% FEDERAL / 10% STATE	
				ROADWAY	BRIDGE
				0005	0013
				URBAN	URBAN
42000501	PORTLAND CEMENT CONCRETE PAVEMENT 10" (JOINTED)	SQ YD	2000	2000	
42001300	PROTECTIVE COAT	SQ YD	6917	6917	
42100200	CONTINUOUSLY REINFORCED PORTLAND CEMENT CONCRETE PAVEMENT 9"	SQ YD	3889	3889	
42100615	PAVEMENT REINFORCEMENT	SQ YD	3889	3889	
42400100	PORTLAND CEMENT CONCRETE SIDEWALK 4 INCH	SQ FT	1284	671	613
42400800	DETECTABLE WARNINGS	SQ FT	133	133	
44000100	PAVEMENT REMOVAL	SQ YD	6484	6484	
44000165	HOT-MIX ASPHALT SURFACE REMOVAL, 4"	SQ YD	322	322	
44000300	CURB REMOVAL	FOOT	12336	12336	
44000400	GUTTER REMOVAL	FOOT	4147	4147	
44000500	COMBINATION CURB AND GUTTER REMOVAL	FOOT	1042	1042	
44000600	SIDEWALK REMOVAL	SQ FT	918	305	613
44001980	CONCRETE BARRIER REMOVAL	FOOT	33145	33145	
44003100	MEDIAN REMOVAL	SQ FT	228	228	

MODEL: Default  
 FILE: \\nrcs-pix\pub\hrc\room\dat\illinois\gov\PWIDOT\Documents\DOT\_Offices\District 8\Projects\076E13\CADDData\CAD\Sheet\076E13-411-500.dgn

USER NAME = owenbj	DESIGNED -	REVISED -
	DRAWN -	REVISED -
PLOT SCALE = 100.0000 ' / in.	CHECKED -	REVISED -
PLOT DATE = 8/14/2019	DATE -	REVISED -

**STATE OF ILLINOIS  
DEPARTMENT OF TRANSPORTATION**

**SUMMARY OF QUANTITIES**

SCALE: SHEET 4 OF 25 SHEETS STA. TO STA.

F.A.I. RTE.	SECTION	COUNTY	TOTAL SHEETS	SHEET NO.
255	82-(3,2,1)RS	ST. CLAIR	623	6
CONTRACT NO. 76E13			ILLINOIS FED. AID PROJECT	

CODE NO.	ITEM	UNIT	TOTAL QUANTITY	CONSTRUCTION CODE	
				90% FEDERAL / 10% STATE	
				ROADWAY	BRIDGE
				0005	0013
				URBAN	URBAN
44004250	PAVED SHOULDER REMOVAL	SQ YD	14820	14820	
44200050	WELDED WIRE REINFORCEMENT	SQ YD	1850	1850	
44200525	CLASS A PATCHES, TYPE I, 8 INCH	SQ YD	50	50	
44200529	CLASS A PATCHES, TYPE II, 8 INCH	SQ YD	100	100	
44200533	CLASS A PATCHES, TYPE III, 8 INCH	SQ YD	200	200	
44200535	CLASS A PATCHES, TYPE IV, 8 INCH	SQ YD	160	160	
44200537	CLASS A PATCHES, TYPE I, 9 INCH	SQ YD	650	650	
44200541	CLASS A PATCHES, TYPE II, 9 INCH	SQ YD	1300	1300	
44200545	CLASS A PATCHES, TYPE III, 9 INCH	SQ YD	2550	2550	
44200547	CLASS A PATCHES, TYPE IV, 9 INCH	SQ YD	1900	1900	
44200549	CLASS A PATCHES, TYPE I, 10 INCH	SQ YD	580	580	
44200553	CLASS A PATCHES, TYPE II, 10 INCH	SQ YD	1160	1160	
44200557	CLASS A PATCHES, TYPE III, 10 INCH	SQ YD	2320	2320	
44200559	CLASS A PATCHES, TYPE IV, 10 INCH	SQ YD	1800	1800	

MODEL: Default  
 FILE: \\nrcs-pkgs\planroom\dat\illinois\gov\PWIDOT\Documents\DOT\_Offices\District 8\Projects\076E13\CADDData\CAD\Sheet\076E13-ph-500.dgn

USER NAME = owenbj	DESIGNED -	REVISED -
PLOT SCALE = 100.0000' / in.	DRAWN -	REVISED -
PLOT DATE = 8/14/2019	CHECKED -	REVISED -
	DATE -	REVISED -

**STATE OF ILLINOIS  
DEPARTMENT OF TRANSPORTATION**

SUMMARY OF QUANTITIES			
SCALE:	SHEET 5	OF 25 SHEETS	STA. TO STA.

F.A.I. RTE.	SECTION	COUNTY	TOTAL SHEETS	SHEET NO.
255	82-(3,2,1)RS	ST. CLAIR	623	7
CONTRACT NO. 76E13			ILLINOIS FED. AID PROJECT	

MODEL: Default  
 FILE: \\nrcs-pkgs\pub\room\dat\illinois\gov\pww\DOT\Documents\DOT\_Offices\District 8\Projects\076E13\CADDData\CAD\Sheet\076E13-41-500.dgn

CODE NO.	ITEM	UNIT	TOTAL QUANTITY	CONSTRUCTION CODE	
				90% FEDERAL / 10% STATE	
				ROADWAY	BRIDGE
				0005 URBAN	0013 URBAN
44200970	CLASS B PATCHES, TYPE II, 10 INCH	SQ YD	760	760	
44200974	CLASS B PATCHES, TYPE III, 10 INCH	SQ YD	1000	1000	
44200976	CLASS B PATCHES, TYPE IV, 10 INCH	SQ YD	760	760	
44201007	CLASS B PATCHES, TYPE II, 13 INCH	SQ YD	14	14	
44201013	CLASS B PATCHES, TYPE IV, 13 INCH	SQ YD	87	87	
44201299	DOWEL BARS 1 1/2"	EACH	2800	2800	
44213000	PATCHING REINFORCEMENT	SQ YD	12770	12770	
44213200	SAW CUTS	FOOT	67968	67968	
44213204	TIE BARS 3/4"	EACH	1010	1010	
45200300	JOINT OR CRACK FILLING	POUND	2100		2100
48101200	AGGREGATE SHOULDERS, TYPE B	TON	1758	1758	
48102100	AGGREGATE WEDGE SHOULDER, TYPE B	TON	2698	2698	
48203033	HOT-MIX ASPHALT SHOULDERS, 9"	SQ YD	2161	2161	
48203037	HOT-MIX ASPHALT SHOULDERS, 10"	SQ YD	4621	4621	

USER NAME = owenbj	DESIGNED -	REVISED -
	DRAWN -	REVISED -
PLOT SCALE = 100.0000' / in.	CHECKED -	REVISED -
PLOT DATE = 8/14/2019	DATE -	REVISED -

**STATE OF ILLINOIS  
DEPARTMENT OF TRANSPORTATION**

**SUMMARY OF QUANTITIES**

SCALE: SHEET 6 OF 25 SHEETS STA. TO STA.

F.A.I. RTE.	SECTION	COUNTY	TOTAL SHEETS	SHEET NO.
255	82-(3,2,1)RS	ST. CLAIR	623	8
			CONTRACT NO. 76E13	
		ILLINOIS	FED. AID PROJECT	



MODEL: C:\p1\it FILE: NAME: p1\planroom.dwg: ILLINOIS.GOR: PWIDOT\Documents\DOT\_Offices\District 8\Projects\76E13\CADDData\CAD:sheets\76E13-sh-500.dgn

CODE NO.	ITEM	UNIT	TOTAL QUANTITY	CONSTRUCTION CODE	
				90% FEDERAL / 10% STATE	
				ROADWAY	BRIDGE
				0005 URBAN	0013 URBAN
48203100	HOT-MIX ASPHALT SHOULDERS	TON	43548	43548	
48300300	PORTLAND CEMENT CONCRETE SHOULDERS 8"	SQ YD	3878	3878	
48300400	PORTLAND CEMENT CONCRETE SHOULDERS 9"	SQ YD	1934	1934	
48300500	PORTLAND CEMENT CONCRETE SHOULDERS 10"	SQ YD	115	115	
48301000	PROTECTIVE COAT	SQ YD	6975	6975	
50102400	CONCRETE REMOVAL	CU YD	614.5	14	600.5
50104650	SLOPE WALL REMOVAL	SQ YD	67		67
50104720	REMOVAL OF EXISTING CONCRETE DECK	EACH	1		1
50157300	PROTECTIVE SHIELD	SQ YD	2630		2630
50200100	STRUCTURE EXCAVATION	CU YD	90.2		90.2
50300100	FLOOR DRAINS	EACH	38		38
50300225	CONCRETE STRUCTURES	CU YD	77.3		77.3
50300255	CONCRETE SUPERSTRUCTURE	CU YD	1425.1		1425.1
50300300	PROTECTIVE COAT	SQ YD	3963		3963

REV. - MS

USER NAME = owenbj	DESIGNED -	REVISED -
	DRAWN -	REVISED -
PLOT SCALE = 100.0000' / in.	CHECKED -	REVISED -
PLOT DATE = 8/14/2019	DATE -	REVISED -

**STATE OF ILLINOIS  
DEPARTMENT OF TRANSPORTATION**

**SUMMARY OF QUANTITIES**

SCALE: SHEET 7 OF 25 SHEETS STA. TO STA.

F.A.I. RTE.	SECTION	COUNTY	TOTAL SHEETS	SHEET NO.
255	82-(3,2,1)RS	ST. CLAIR	623	9
CONTRACT NO. 76E13			ILLINOIS FED. AID PROJECT	

CODE NO.	ITEM	UNIT	TOTAL QUANTITY	CONSTRUCTION CODE	
				90% FEDERAL / 10% STATE	
				ROADWAY	BRIDGE
				0005 URBAN	0013 URBAN
50301350	CONCRETE SUPERSTRUCTURE (APPROACH SLAB)	CU YD	158.9		158.9
50500405	FURNISHING AND ERECTING STRUCTURAL STEEL	POUND	26260		26260
50800205	REINFORCEMENT BARS, EPOXY COATED	POUND	390410		390410
50800515	BAR SPLICERS	EACH	114		114
50800530	MECHANICAL SPLICERS	EACH	247		247
51100100	SLOPE WALL 4 INCH	SQ YD	67		67
51500100	NAME PLATES	EACH	1		1
52000110	PREFORMED JOINT STRIP SEAL	FOOT	1753		1753
52100010	ELASTOMERIC BEARING ASSEMBLY, TYPE I	EACH	50		50
52100020	ELASTOMERIC BEARING ASSEMBLY, TYPE II	EACH	28		28
52100030	ELASTOMERIC BEARING ASSEMBLY, TYPE III	EACH	7		7
52100510	ANCHOR BOLTS, 3/4"	EACH	28		28
52100520	ANCHOR BOLTS, 1"	EACH	98		98
52100540	ANCHOR BOLTS, 1 1/2"	EACH	58		58

REV. - MS

MODEL: Default  
 FILE NAME: P:\uplanroom.dat  
 ILLINOIS.GOV\PWID\DOT\Documents\DOT\_Offices\District 8\Projects\076E13\CADDData\CAD\Sheets\076E13-ph-500.dgn

USER NAME = owenbj	DESIGNED -	REVISED -
	DRAWN -	REVISED -
PLOT SCALE = 100.0000' / in.	CHECKED -	REVISED -
PLOT DATE = 8/14/2019	DATE -	REVISED -

**STATE OF ILLINOIS  
DEPARTMENT OF TRANSPORTATION**

**SUMMARY OF QUANTITIES**

SCALE: SHEET 8 OF 25 SHEETS STA. TO STA.

F.A.I. RTE.	SECTION	COUNTY	TOTAL SHEETS	SHEET NO.
255	82-(3,2,1)RS	ST. CLAIR	623	10
				CONTRACT NO. 76E13
ILLINOIS FED. AID PROJECT				

CODE NO.	ITEM	UNIT	TOTAL QUANTITY	CONSTRUCTION CODE	
				90% FEDERAL / 10% STATE	
				ROADWAY	BRIDGE
				0005 URBAN	0013 URBAN
542A2749	PIPE CULVERTS, CLASS A, TYPE 4 24"	FOOT	12	12	
54213657	PRECAST REINFORCED CONCRETE FLARED END SECTIONS 12"	EACH	6	6	
54213669	PRECAST REINFORCED CONCRETE FLARED END SECTIONS 24"	EACH	5	5	
54262712	METAL FLARED END SECTIONS 12"	EACH	41	41	
58100200	WATERPROOFING MEMBRANE SYSTEM	SQ YD	27541		27541
58700300	CONCRETE SEALER	SQ FT	23057		23057
59200103	BRIDGE WASHING NO. 3	EACH	1		1
59200108	BRIDGE WASHING NO. 8	EACH	1		1
59200109	BRIDGE WASHING NO. 9	EACH	1		1
59200110	BRIDGE WASHING NO. 10	EACH	1		1
59200111	BRIDGE WASHING NO. 11	EACH	1		1
59200112	BRIDGE WASHING NO. 12	EACH	1		1
59200113	BRIDGE WASHING NO. 13	EACH	1		1
59200114	BRIDGE WASHING NO. 14	EACH	1		1

MODEL: Default  
 FILE: MainE\_PlanRoom.dwg  
 I:\Projects\76E13\CADDData\CAD\Sheet\76E13-ph-500.dgn

REV. - MS

USER NAME = owenbj	DESIGNED -	REVISED -
	DRAWN -	REVISED -
PLOT SCALE = 100.0000' / in.	CHECKED -	REVISED -
PLOT DATE = 8/14/2019	DATE -	REVISED -

**STATE OF ILLINOIS  
DEPARTMENT OF TRANSPORTATION**

**SUMMARY OF QUANTITIES**

SCALE: SHEET 9 OF 25 SHEETS STA. TO STA.

F.A.I. RTE.	SECTION	COUNTY	TOTAL SHEETS	SHEET NO.
255	82-(3,2,1)RS	ST. CLAIR	623	11
				CONTRACT NO. 76E13
ILLINOIS FED. AID PROJECT				

CODE NO.	ITEM	UNIT	TOTAL QUANTITY	CONSTRUCTION CODE	
				90% FEDERAL / 10% STATE	
				ROADWAY	BRIDGE
				0005	0013
				URBAN	URBAN
59200115	BRIDGE WASHING NO. 15	EACH	1		1
59200116	BRIDGE WASHING NO. 16	EACH	1		1
59200117	BRIDGE WASHING NO. 17	EACH	1		1
59300100	CONTROLLED LOW-STRENGTH MATERIAL	CU YD	208.4		208.4
60100060	CONCRETE HEADWALLS FOR PIPE DRAINS	EACH	347	347	
60100070	SHOULDER REMOVAL AND REPLACEMENT	FOOT	199161	199161	
60100945	PIPE DRAINS 12"	FOOT	3045	3045	
60108106	PIPE UNDERDRAINS, TYPE 1, 6"	FOOT	197756	197756	
60108300	PIPE UNDERDRAINS 8" (SPECIAL)	FOOT	11335	11335	
60255500	MANHOLES TO BE ADJUSTED	EACH	1	1	
60260100	INLETS TO BE ADJUSTED	EACH	16	16	
60300105	FRAMES AND GRATES TO BE ADJUSTED	EACH	144	144	
60500060	REMOVING INLETS	EACH	58	58	
60600605	CONCRETE CURB, TYPE B	FOOT	5569	5539	30

MODEL: Default  
 FILE: \\nlsr1c1-p1x1uplanroom.dta\illinois.gov\PWIDOT\Documents\DOT\_Offices\District 8\Projects\076E13\CADDData\CAD\Sheet\076E13-ph-500.dgn

USER NAME = owenbj	DESIGNED -	REVISED -
PLOT SCALE = 100.0000' / in.	DRAWN -	REVISED -
PLOT DATE = 8/14/2019	CHECKED -	REVISED -
	DATE -	REVISED -

**STATE OF ILLINOIS  
DEPARTMENT OF TRANSPORTATION**

**SUMMARY OF QUANTITIES**

SCALE: SHEET 10 OF 25 SHEETS STA. TO STA.

F.A.I. RTE.	SECTION	COUNTY	TOTAL SHEETS	SHEET NO.
255	82-(3,2,1)RS	ST. CLAIR	623	12
			CONTRACT NO. 76E13	
		ILLINOIS	FED. AID PROJECT	

MODEL: Default  
 FILE: \\nlsr1c1\pub\haronom.dta\illinois\gov\PWIDOT\Documents\DOT\_Offices\Director\Projects\DOT76E13\CADDData\CAD\Sheet\DOT76E13-4th-500.dgn

CODE NO.	ITEM	UNIT	TOTAL QUANTITY	CONSTRUCTION CODE	
				90% FEDERAL / 10% STATE	
				ROADWAY	BRIDGE
				0005	0013
				URBAN	URBAN
60603500	COMBINATION CONCRETE CURB AND GUTTER, TYPE B-6.06	FOOT	52	52	
60603800	COMBINATION CONCRETE CURB AND GUTTER, TYPE B-6.12	FOOT	540	540	
60604400	COMBINATION CONCRETE CURB AND GUTTER, TYPE B-6.18	FOOT	5920	5920	
60605000	COMBINATION CONCRETE CURB AND GUTTER, TYPE B-6.24	FOOT	1108	1108	
60618300	CONCRETE MEDIAN SURFACE, 4 INCH	SQ FT	1280	1280	
61000115	TYPE E INLET BOX, STANDARD 610001	EACH	23	23	
61000225	TYPE F INLET BOX, STANDARD 610001	EACH	31	31	
61000335	TYPE G INLET BOX, STANDARD 610001	EACH	2	2	
* 63000001	STEEL PLATE BEAM GUARDRAIL, TYPE A, 6 FOOT POSTS	FOOT	20800	20800	
* 63000003	STEEL PLATE BEAM GUARDRAIL, TYPE A, 9 FOOT POSTS	FOOT	8300	8300	
* 63100045	TRAFFIC BARRIER TERMINAL, TYPE 2	EACH	30	30	
* 63100070	TRAFFIC BARRIER TERMINAL, TYPE 5	EACH	18	18	
* 63100085	TRAFFIC BARRIER TERMINAL, TYPE 6	EACH	45	45	
* 63100167	TRAFFIC BARRIER TERMINAL, TYPE 1 (SPECIAL) TANGENT	EACH	57	57	
<b>* SPECIALTY ITEM</b>					

USER NAME = owenbj	DESIGNED -	REVISED -
PLOT SCALE = 100.0000' / in.	DRAWN -	REVISED -
PLOT DATE = 8/14/2019	CHECKED -	REVISED -
	DATE -	REVISED -

**STATE OF ILLINOIS  
DEPARTMENT OF TRANSPORTATION**

SUMMARY OF QUANTITIES			
SCALE:	SHEET 11	OF 25 SHEETS	STA. TO STA.

F.A.I. RTE.	SECTION	COUNTY	TOTAL SHEETS	SHEET NO.
255	82-(3,2,1)RS	ST. CLAIR	623	13
CONTRACT NO. 76E13			ILLINOIS FED. AID PROJECT	

MODEL: Default  
 FILE: MainE\_PlanRoom.dwg  
 I:\Projects\76E13\CADDData\CAD\Sheets\DOT\76E13-ph-500.dgn

CODE NO.	ITEM	UNIT	TOTAL QUANTITY	CONSTRUCTION CODE	
				URBAN	
				90% FEDERAL / 10% STATE	
				ROADWAY	BRIDGE
				0005	0013
				URBAN	URBAN
63200310	GUARDRAIL REMOVAL	FOOT	35549	35549	
63500105	DELINEATORS	EACH	967	967	
63700180	CONCRETE BARRIER, SINGLE FACE, 44 INCH HEIGHT	FOOT	1171	1171	
63700280	CONCRETE BARRIER, DOUBLE FACE, 44 INCH HEIGHT	FOOT	18350	18350	
63700805	CONCRETE BARRIER TRANSITION	FOOT	870	870	
63700900	CONCRETE BARRIER BASE	FOOT	2704	2704	
64200116	SHOULDER RUMBLE STRIPS, 16 INCH	FOOT	146390	146390	
64300260	IMPACT ATTENUATORS (FULLY REDIRECTIVE, NARROW), TEST LEVEL 3	EACH	1	1	
64300320	IMPACT ATTENUATORS (FULLY REDIRECTIVE, RESETTABLE), TEST LEVEL 3	EACH	2	2	
66500105	WOVEN WIRE FENCE, 4'	FOOT	865	865	
67100100	MOBILIZATION	L SUM	1	1	
70100405	TRAFFIC CONTROL AND PROTECTION, STANDARD 701321	EACH	1	1	
70100450	TRAFFIC CONTROL AND PROTECTION, STANDARD 701201	L SUM	1	1	
70100500	TRAFFIC CONTROL AND PROTECTION, STANDARD 701326	L SUM	1	1	

REV. - MS

USER NAME = owenbj	DESIGNED -	REVISED -
	DRAWN -	REVISED -
PLOT SCALE = 100.0000' / in.	CHECKED -	REVISED -
PLOT DATE = 8/14/2019	DATE -	REVISED -

**STATE OF ILLINOIS  
DEPARTMENT OF TRANSPORTATION**

**SUMMARY OF QUANTITIES**

SCALE: SHEET 12 OF 25 SHEETS STA. TO STA.

F.A.I. RTE.	SECTION	COUNTY	TOTAL SHEETS	SHEET NO.
255	82-(3,2,1)RS	ST. CLAIR	623	14
				CONTRACT NO. 76E13
ILLINOIS FED. AID PROJECT				

CODE NO.	ITEM	UNIT	TOTAL QUANTITY	CONSTRUCTION CODE	
				90% FEDERAL / 10% STATE	
				ROADWAY	BRIDGE
				0005 URBAN	0013 URBAN
70100825	TRAFFIC CONTROL AND PROTECTION, STANDARD 701456	L SUM	1	1	
70102630	TRAFFIC CONTROL AND PROTECTION, STANDARD 701601	L SUM	1	1	
70102635	TRAFFIC CONTROL AND PROTECTION, STANDARD 701701	L SUM	1	1	
70102640	TRAFFIC CONTROL AND PROTECTION, STANDARD 701801	L SUM	1	1	
70103815	TRAFFIC CONTROL SURVEILLANCE	CAL DA	21	21	
70106500	TEMPORARY BRIDGE TRAFFIC SIGNALS	EACH	3	3	
70106700	TEMPORARY RUMBLE STRIPS	EACH	18	18	
70107025	CHANGEABLE MESSAGE SIGN	CAL DA	4680	4680	
70300100	SHORT TERM PAVEMENT MARKING	FOOT	1118	1118	
70300150	SHORT TERM PAVEMENT MARKING REMOVAL	SQ FT	372	372	
70300220	TEMPORARY PAVEMENT MARKING - LINE 4"	FOOT	8647	8647	
70300240	TEMPORARY PAVEMENT MARKING - LINE 6"	FOOT	3550	3550	
70300280	TEMPORARY PAVEMENT MARKING - LINE 24"	FOOT	48	48	
70400100	TEMPORARY CONCRETE BARRIER	FOOT	3723.5	3723.5	

REV. - MS

MODEL: Default  
 FILE: MainE\_PlanRoom.dwg  
 I:\Projects\76E13\CADDData\CAD\Sheet\76E13-ph-500.dgn

USER NAME = owenbj	DESIGNED -	REVISED -
	DRAWN -	REVISED -
PLOT SCALE = 100.0000' / in.	CHECKED -	REVISED -
PLOT DATE = 8/14/2019	DATE -	REVISED -

**STATE OF ILLINOIS  
DEPARTMENT OF TRANSPORTATION**

**SUMMARY OF QUANTITIES**

SCALE: SHEET 13 OF 25 SHEETS STA. TO STA.

F.A.I. RTE.	SECTION	COUNTY	TOTAL SHEETS	SHEET NO.
255	82-(3,2,1)RS	ST. CLAIR	623	15
CONTRACT NO. 76E13			ILLINOIS FED. AID PROJECT	

MODEL: Default  
 FILE NAME: P:\uplanroom.dwg  
 ILLINOIS.GOV\PWIDOT\Documents\DOT\_Offices\District 8\Projects\076E13\CADDData\CAD\Sheet\076E13-ph-500.dgn

CODE NO.	ITEM	UNIT	TOTAL QUANTITY	CONSTRUCTION CODE	
				URBAN	
				90% FEDERAL / 10% STATE	
				ROADWAY	BRIDGE
				0005	0013
				URBAN	URBAN
70400200	RELOCATE TEMPORARY CONCRETE BARRIER	FOOT	2723.5	2723.5	
70600240	IMPACT ATTENUATORS, TEMPORARY (NON- REDIRECTIVE), TEST LEVEL 2	EACH	2	2	
70600241	IMPACT ATTENUATORS, TEMPORARY (NON- REDIRECTIVE, NARROW), TEST LEVEL 2	EACH	2	2	
70600251	IMPACT ATTENUATORS, TEMPORARY (NON- REDIRECTIVE, NARROW), TEST LEVEL 3	EACH	3	3	
70600340	IMPACT ATTENUATORS, RELOCATE (NON- REDIRECTIVE), TEST LEVEL 2	EACH	2	2	
70600341	IMPACT ATTENUATORS, RELOCATE (NON- REDIRECTIVE, NARROW), TEST LEVEL 2	EACH	2	2	
70600352	IMPACT ATTENUATORS, RELOCATE (NON- REDIRECTIVE,NARROW), TEST LEVEL 3	EACH	2	2	
* 72000100	SIGN PANEL - TYPE 1	SQ FT	12.5	12.5	
* 72000300	SIGN PANEL - TYPE 3	SQ FT	8207	8207	
* 72400310	REMOVE SIGN PANEL - TYPE 1	SQ FT	10	10	
* 72400330	REMOVE SIGN PANEL - TYPE 3	SQ FT	8345	8345	
* 72501000	TERMINAL MARKER - DIRECT APPLIED	EACH	57	57	
* 73000100	WOOD SIGN SUPPORT	FOOT	256	256	
* 73300200	OVERHEAD SIGN STRUCTURE - SPAN, TYPE II-A (4'-6" X 5'-3")	FOOT	100	100	

**\* SPECIALTY ITEM**

USER NAME = owenbj	DESIGNED -	REVISED -
	DRAWN -	REVISED -
PLOT SCALE = 100.0000 ' / in.	CHECKED -	REVISED -
PLOT DATE = 8/14/2019	DATE -	REVISED -

**STATE OF ILLINOIS  
DEPARTMENT OF TRANSPORTATION**

**SUMMARY OF QUANTITIES**

SCALE: SHEET 14 OF 25 SHEETS STA. TO STA.

F.A.I. RTE.	SECTION	COUNTY	TOTAL SHEETS	SHEET NO.
255	82-(3,2,1)RS	ST. CLAIR	623	16
				CONTRACT NO. 76E13
ILLINOIS FED. AID PROJECT				

REV. - MS



MODEL: Default  
 FILE NAME: P:\uplanroom.dat  
 ILLINOIS.GOV\PWIDOT\Documents\DOT\_Offices\District 8\Projects\076E13\CADDData\CAD\Sheets\076E13-ph-500.dgn

CODE NO.	ITEM	UNIT	TOTAL QUANTITY	CONSTRUCTION CODE	
				URBAN	
				90% FEDERAL / 10% STATE	
				ROADWAY	BRIDGE
				0005	0013
				URBAN	URBAN
* 73301810	OVERHEAD SIGN STRUCTURE WALKWAY, TYPE A	FOOT	62	62	
* 73400200	DRILLED SHAFT CONCRETE FOUNDATIONS	CU YD	33	33	
* 73500005	REMOVE OVERHEAD SIGN STRUCTURE - SPAN	EACH	1	1	
* 73700100	REMOVE GROUND MOUNTED SIGN SUPPORT	EACH	10	10	
* 73800905	REMOVE AND RE-ERECT OVERHEAD SIGN STRUCTURE WALKWAY	FOOT	123	123	
* 78000200	THERMOPLASTIC PAVEMENT MARKING - LINE 4"	FOOT	8293	8293	
* 78003100	PREFORMED PLASTIC PAVEMENT MARKING, TYPE B - LETTERS AND SYMBOLS	SQ FT	1198	1198	
* 78003130	PREFORMED PLASTIC PAVEMENT MARKING, TYPE B - LINE 6"	FOOT	265702	265702	
* 78003140	PREFORMED PLASTIC PAVEMENT MARKING, TYPE B - LINE 8"	FOOT	25611	25611	
* 78003150	PREFORMED PLASTIC PAVEMENT MARKING, TYPE B - LINE 12"	FOOT	1060	1060	
* 78003180	PREFORMED PLASTIC PAVEMENT MARKING, TYPE B - LINE 24"	FOOT	180	180	
* 78100100	RAISED REFLECTIVE PAVEMENT MARKER	EACH	4698	4698	
* 78100300	REPLACEMENT REFLECTOR	EACH	32	32	
* 78200005	GUARDRAIL REFLECTORS, TYPE A	EACH	602	602	
* SPECIALTY ITEM					

REV. - MS

USER NAME = owenbj	DESIGNED -	REVISED -
	DRAWN -	REVISED -
PLOT SCALE = 100.0000' / in.	CHECKED -	REVISED -
PLOT DATE = 8/14/2019	DATE -	REVISED -

**STATE OF ILLINOIS  
DEPARTMENT OF TRANSPORTATION**

**SUMMARY OF QUANTITIES**

SCALE: SHEET 15 OF 25 SHEETS STA. TO STA.

F.A.I. RTE.	SECTION	COUNTY	TOTAL SHEETS	SHEET NO.
255	82-(3,2,1)RS	ST. CLAIR	623	17
				CONTRACT NO. 76E13
ILLINOIS FED. AID PROJECT				

MODEL: Default  
 FILE: MainE\_PlanRoom.dwg  
 I:\GIS\Projects\76E13\CADDData\CAD\Sheet\76E13-ph-500.dgn

CODE NO.	ITEM	UNIT	TOTAL QUANTITY	CONSTRUCTION CODE	
				URBAN	
				90% FEDERAL / 10% STATE	
				ROADWAY	BRIDGE
				0005	0013
				URBAN	URBAN
* 78200011	BARRIER WALL REFLECTORS, TYPE C	EACH	752	752	
* 78200020	CURB REFLECTORS	EACH	227	227	
78300200	RAISED REFLECTIVE PAVEMENT MARKER REMOVAL	EACH	4736	4736	
* 80300100	LOCATING UNDERGROUND CABLE	FOOT	260	260	
* 80400100	ELECTRIC SERVICE INSTALLATION	EACH	3	3	
* 81028350	UNDERGROUND CONDUIT, PVC, 2" DIA.	FOOT	1965	1965	
* 81028730	UNDERGROUND CONDUIT, COILABLE NONMETALLIC CONDUIT, 1 1/4" DIA.	FOOT	50	50	
* 81028770	UNDERGROUND CONDUIT, COILABLE NONMETALLIC CONDUIT, 3" DIA.	FOOT	170	170	
* 81104580	CONDUIT ATTACHED TO STRUCTURE, 2" DIA., STAINLESS STEEL	FOOT	10	10	
* 81200230	CONDUIT EMBEDDED IN STRUCTURE, 2" DIA., PVC	FOOT	19326	19326	
* 81301370	JUNCTION BOX, STAINLESS STEEL, EMBEDDED IN STRUCTURE, 18" X 12" X 8"	EACH	14	14	
* 81603000	UNIT DUCT, 600V, 2-1C NO.8, 1/C NO.8 GROUND, (XLP-TYPE USE), 3/4" DIA. POLYETHYLENE	FOOT	3255	3255	
* 81603025	UNIT DUCT, 600V, 2-1C NO.4, 1/C NO.4 GROUND, (XLP-TYPE USE), 1" DIA. POLYETHYLENE	FOOT	22	22	
* 81603035	UNIT DUCT, 600V, 2-1C NO.6, 1/C NO.6 GROUND, (XLP-TYPE USE), 1" DIA. POLYETHYLENE	FOOT	4827	4827	
* SPECIALTY ITEM					

REV. - MS

USER NAME = owenbj	DESIGNED -	REVISED -
	DRAWN -	REVISED -
PLOT SCALE = 100.0000' / in.	CHECKED -	REVISED -
PLOT DATE = 8/14/2019	DATE -	REVISED -

**STATE OF ILLINOIS  
DEPARTMENT OF TRANSPORTATION**

**SUMMARY OF QUANTITIES**

SCALE: SHEET 16 OF 25 SHEETS STA. TO STA.

F.A.I. RTE.	SECTION	COUNTY	TOTAL SHEETS	SHEET NO.
255	82-(3,2,1)RS	ST. CLAIR	623	18
			CONTRACT NO. 76E13	
ILLINOIS FED. AID PROJECT				

MODEL: Default  
 FILE: \\nlsr01\p1\pub\hanscom.dwg  
 I:\Illinois\goc\RWIDOT\Documents\DOT\_Offices\Bartlett\B\Projects\076E13\CADDData\CAD\Sheet\076E13-41-500.dgn

CODE NO.	ITEM	UNIT	TOTAL QUANTITY	CONSTRUCTION CODE	
				90% FEDERAL / 10% STATE	
				ROADWAY	BRIDGE
				0005 URBAN	0013 URBAN
* 81603065	UNIT DUCT, 600V, 2-1C NO.2, 1/C NO.2 GROUND, (XLP-TYPE USE), 1 1/4" DIA. POLYETHYLENE	FOOT	2162	2162	
* 81702415	ELECTRIC CABLE IN CONDUIT, 600V (XLP-TYPE USE) 3-1/C NO. 6	FOOT	8528	8528	
* 81702420	ELECTRIC CABLE IN CONDUIT, 600V (XLP-TYPE USE) 3-1/C NO. 8	FOOT	12410	12410	
* 82110008	LUMINAIRE, LED, ROADWAY, OUTPUT DESIGNATION H	EACH	136	136	
* 82500380	LIGHTING CONTROLLER, BASE MOUNTED, 480VOLT, 200AMP	EACH	3	3	
* 84200600	REMOVAL OF LIGHTING UNIT, NO SALVAGE	EACH	68	68	
* 84500110	REMOVAL OF LIGHTING CONTROLLER	EACH	3	3	
* 84500120	REMOVAL OF ELECTRIC SERVICE INSTALLATION	EACH	3	3	
* 84500130	REMOVAL OF LIGHTING CONTROLLER FOUNDATION	EACH	3	3	
* 88600600	DETECTOR LOOP REPLACEMENT	FOOT	2381	2381	
* 89502300	REMOVE ELECTRIC CABLE FROM CONDUIT	FOOT	12721	12721	
* X0301242	PIEZO AXLE SENSOR, CLASS II	FOOT	69	69	
X0301271	REMOVE EXISTING UNDERDRAINS	FOOT	11335	11335	
X0322936	REMOVE EXISTING FLARED END SECTION	EACH	52	52	

**\* SPECIALTY ITEM**

USER NAME = owenbj	DESIGNED -	REVISED -
	DRAWN -	REVISED -
PLOT SCALE = 100.0000' / in.	CHECKED -	REVISED -
PLOT DATE = 8/14/2019	DATE -	REVISED -

**STATE OF ILLINOIS  
DEPARTMENT OF TRANSPORTATION**

**SUMMARY OF QUANTITIES**

SCALE: SHEET 17 OF 25 SHEETS STA. TO STA.

F.A.I. RTE.	SECTION	COUNTY	TOTAL SHEETS	SHEET NO.
255	82-(3,2,1)RS	ST. CLAIR	623	19
			CONTRACT NO. 76E13	
		ILLINOIS	FED. AID PROJECT	

MODEL: Default  
 FILE NAME: P:\uplanroom.dwg  
 ILLINOIS.GOV:PWIDOT\Documents\DOT\_Offices\District 8\Projects\076E13\CADD\DATA\CAD\Sheet\076E13-ph-500.dgn

CODE NO.	ITEM	UNIT	TOTAL QUANTITY	CONSTRUCTION CODE	
				90% FEDERAL / 10% STATE	
				ROADWAY	BRIDGE
				0005 URBAN	0013 URBAN
X0323265	REMOVE EXISTING RIPRAP	SQ YD	950	950	
X0323586	PIPE DRAIN REMOVAL	FOOT	3045	3045	
X0325153	MASONRY CLEANING AND TUCKPOINTING	SQ YD	159		159
X0326382	CONCRETE BARRIER BASE (SPECIAL)	FOOT	11821	11821	
* X0327116	SOLAR POWER ASSEMBLY	EACH	1	1	
X0327303	REMOVAL OF EXISTING SIGN LIGHTING UNIT WITH NO SALVAGE	EACH	35	35	
X0327321	INTERSTATE WEEKEND CLOSURE, SPECIAL	EACH	2	2	
X0327510	GRANITE BLOCK REPLACEMENT	SQ FT	100	100	
X1200061	CLAY LINER	CU YD	383		383
X2080250	TRENCH BACKFILL, SPECIAL	CU YD	10	10	
* X2700010	PREFORMED PLASTIC PAVEMENT MARKING, TYPE D - LINE 6"	FOOT	11001	11001	
X4201510	P.C. CONCRETE BRIDGE APPROACH SHOULDER PAVEMENT (SPECIAL)	SQ YD	762	762	
X440A300	PORTLAND CEMENT CONCRETE SURFACE REMOVAL (COLD MILLING) VARIABLE DEPTH	SQ YD	7906	7906	
X4401198	HOT-MIX ASPHALT SURFACE REMOVAL, VARIABLE DEPTH	SQ YD	5277	5277	
X4403300	CONCRETE MEDIAN REMOVAL	SQ FT	1474	1474	

**\* SPECIALTY ITEM**

USER NAME = owenbj	DESIGNED -	REVISED -
	DRAWN -	REVISED -
PLOT SCALE = 100.0000 ' / in.	CHECKED -	REVISED -
PLOT DATE = 8/14/2019	DATE -	REVISED -

**STATE OF ILLINOIS  
DEPARTMENT OF TRANSPORTATION**

**SUMMARY OF QUANTITIES**

SCALE: SHEET 18 OF 25 SHEETS STA. TO STA.

F.A.I. RTE.	SECTION	COUNTY	TOTAL SHEETS	SHEET NO.
255	82-(3,2,1)RS	ST. CLAIR	623	20
CONTRACT NO. 76E13				
ILLINOIS FED. AID PROJECT				

REV. - MS

MODEL: Default  
 FILE NAME: P:\uplanroom.dat  
 ILLINOIS.GOV\PWIDOT\Documents\DOT\_Offices\District 8\Projects\076E13\CADD\data\CAD\sheet\076E13-ph-500.dgn

CODE NO.	ITEM	UNIT	TOTAL QUANTITY	CONSTRUCTION CODE	
				90% FEDERAL / 10% STATE	
				ROADWAY	BRIDGE
				0005 URBAN	0013 URBAN
X4405018	LONGITUDINAL PARTIAL DEPTH REMOVAL 1 1/2"	FOOT	14500	14500	
X4420553	CLASS A PATCHES, TYPE II, 10 INCH (SPECIAL)	SQ YD	713	713	
X4420900	LONGITUDINAL PARTIAL DEPTH PATCHING	TON	362	362	
X4832500	PORTLAND CEMENT CONCRETE SHOULDERS 12" (SPECIAL)	SQ YD	528	528	
X5015225	PIPE CULVERT REMOVAL (SPECIAL)	FOOT	12	12	
X5030250	BRIDGE DECK GROOVING (LONGITUDINAL)	SQ YD	1612		1612
* X5060608	CONTAINMENT AND DISPOSAL OF NON-LEAD PAINT CLEANING RESIDUES NO. 8	L SUM	1		1
X5090810	PEDESTRIAN RAIL (SPECIAL)	FOOT	265		265
X5210005	TIGHTEN SUPPORT ANCHOR BOLT	EACH	2	2	
X5420612	PIPE CULVERTS TO BE CLEANED 12"	FOOT	88	88	
X5420624	PIPE CULVERTS TO BE CLEANED 24"	FOOT	151	151	
X5537600	STORM SEWERS TO BE CLEANED 8"	FOOT	878	878	
X6015000	REMOVE CONCRETE HEADWALLS FOR PIPE DRAINS	EACH	347	347	
X6062700	CONCRETE GUTTER, TYPE A (SPECIAL)	FOOT	4147	4147	

**\* SPECIALTY ITEM**

USER NAME = owenbj	DESIGNED -	REVISED -
	DRAWN -	REVISED -
PLOT SCALE = 100.0000' / in.	CHECKED -	REVISED -
PLOT DATE = 8/14/2019	DATE -	REVISED -

**STATE OF ILLINOIS  
DEPARTMENT OF TRANSPORTATION**

**SUMMARY OF QUANTITIES**

SCALE: SHEET 19 OF 25 SHEETS STA. TO STA.

F.A.I. RTE.	SECTION	COUNTY	TOTAL SHEETS	SHEET NO.
255	82-(3,2,1)RS	ST. CLAIR	623	21
CONTRACT NO. 76E13				
ILLINOIS FED. AID PROJECT				

REV. - MS

MODEL: Default  
 FILE NAME: P:\uplanroom.dat  
 ILLINOIS.GOV\PWIDOT\Documents\DOT\_Offices\District 8\Projects\076E13\CADDData\CAD\Sheet\076E13-ph-500.dgn

CODE NO.	ITEM	UNIT	TOTAL QUANTITY	CONSTRUCTION CODE	
				90% FEDERAL / 10% STATE	
				ROADWAY	BRIDGE
				0005 URBAN	0013 URBAN
X6100230	TYPE F INLET BOX, STANDARD 610001 (SPECIAL)	EACH	2	2	
X6100510	REMOVE AND REPLACE INLET BOX 610001 GRATES	EACH	4		4
X6350120	DELINEATOR REMOVAL	EACH	680	680	
X6430120	REMOVE IMPACT ATTENUATORS, NO SALVAGE	EACH	4	4	
X6700410	ENGINEER'S FIELD OFFICE, TYPE A (SPECIAL)	CAL MO	20	20	
X7010202	TRAFFIC CONTROL AND PROTECTION, STANDARD 701321 (SPECIAL)	EACH	2	2	
X7010216	TRAFFIC CONTROL AND PROTECTION, (SPECIAL)	L SUM	1	1	
X7010218	TRAFFIC CONTROL AND PROTECTION, (SPECIAL)	EACH	4	4	
X7011800	TRAFFIC CONTROL AND PROTECTION, STANDARD BLR 21	L SUM	1	1	
* X7200085	REPLACE AND TIGHTEN SIGN MOUNTING CLIPS PER EACH SIGN	EACH	18	18	
* X7330066	REPAIR HANDRAIL LOCKING PIN CONNECTION	EACH	45	45	
* X7330069	TIGHTEN END SUPPORT CONNECTION	EACH	6	6	
* X7330070	OVERHEAD SIGN SUPPORT GROUT REPAIR	EACH	4	4	
X7330112	SAFETY CHAIN	EACH	19	19	

**\* SPECIALTY ITEM**

USER NAME = owenbj	DESIGNED -	REVISED -
	DRAWN -	REVISED -
PLOT SCALE = 100.0000 ' / in.	CHECKED -	REVISED -
PLOT DATE = 8/14/2019	DATE -	REVISED -

**STATE OF ILLINOIS  
DEPARTMENT OF TRANSPORTATION**

**SUMMARY OF QUANTITIES**

SCALE: SHEET 20 OF 25 SHEETS STA. TO STA.

F.A.I. RTE.	SECTION	COUNTY	TOTAL SHEETS	SHEET NO.
255	82-(3,2,1)RS	ST. CLAIR	623	22
CONTRACT NO. 76E13				
ILLINOIS FED. AID PROJECT				

REV. - MS

MODEL: Default  
 FILE: \\nrcs-pk1\pub\harcross\dat\illinois\gov\PWIDOT\Documents\DOT\_Offices\District 8\Projects\076E13\CADD\DATA\CAD\Sheet\076E13-ph-500.dgn

CODE NO.	ITEM	UNIT	TOTAL QUANTITY	CONSTRUCTION CODE	
				90% FEDERAL / 10% STATE	
				ROADWAY	BRIDGE
				0005 URBAN	0013 URBAN
* X7800200	PAINT PAVEMENT MARKING CURB	FOOT	260	260	
* X7830060	GROOVING FOR RECESSED PAVEMENT MARKING, LETTERS AND SYMBOLS	SQ FT	590	590	
* X7830074	GROOVING FOR RECESSED PAVEMENT MARKING 7"	FOOT	271867	271867	
* X7830076	GROOVING FOR RECESSED PAVEMENT MARKING 9"	FOOT	25611	25611	
* X7830078	GROOVING FOR RECESSED PAVEMENT MARKING 13"	FOOT	1060	1060	
* X7830090	GROOVING FOR RECESSED PAVEMENT MARKING 25"	FOOT	180	180	
X8140210	HEAVY-DUTY HANDHOLE (SPECIAL)	EACH	4	4	
* X8360103	LIGHT POLE FOUNDATION, INTEGRAL WITH BARRIER WALL	EACH	67	67	
* X8630103	CONTROLLER CABINET TYPE III, SPECIAL	EACH	1	1	
* X8730810	ELECTRIC CABLE IN CONDUIT, CONOGA-30003	FOOT	1940	1940	
X8780107	CONCRETE FOUNDATION (SPECIAL)	FOOT	3.5	3.5	
* X8860400	DETECTOR LOOP, SPECIAL	FOOT	660	660	
X8900100	TEMPORARY TRAFFIC SIGNAL INSTALLATION (SPECIAL)	EACH	3	3	
Z0001495	BRIDGE APPROACH SHOULDER REMOVAL	SQ YD	762	762	

**\* SPECIALTY ITEM**

USER NAME = owenbj	DESIGNED -	REVISED -
	DRAWN -	REVISED -
PLOT SCALE = 100.0000' / in.	CHECKED -	REVISED -
PLOT DATE = 8/14/2019	DATE -	REVISED -

**STATE OF ILLINOIS  
DEPARTMENT OF TRANSPORTATION**

**SUMMARY OF QUANTITIES**

SCALE: SHEET 21 OF 25 SHEETS STA. TO STA.

F.A.I. RTE.	SECTION	COUNTY	TOTAL SHEETS	SHEET NO.
255	82-(3,2,1)RS	ST. CLAIR	623	23
			CONTRACT NO. 76E13	
		ILLINOIS	FED. AID PROJECT	

MODEL: Default  
 FILE: MainE\_PlanRoom.dwg  
 I:\Projects\76E13\CADDData\CAD\Sheet\DOT\Office\District\B\Project\76E13\Sheet\500.dgn

CODE NO.	ITEM	UNIT	TOTAL QUANTITY	CONSTRUCTION CODE	
				90% FEDERAL / 10% STATE	
				ROADWAY	BRIDGE
				0005 URBAN	0013 URBAN
Z0001899	JACK AND REMOVE EXISTING BEARINGS	EACH	92		92
Z0001903	STRUCTURAL STEEL REMOVAL	POUND	7200		7200
Z0001905	STRUCTURAL STEEL REPAIR	POUND	4140		4140
Z0004552	APPROACH SLAB REMOVAL	SQ YD	373	373	
Z0004556	HOT-MIX ASPHALT SURFACE REMOVAL (DECK)	SQ YD	28120		28120
* Z0007101	CONTAINMENT AND DISPOSAL OF LEAD PAINT CLEANING RESIDUES NO. 1	L SUM	1		1
* Z0007102	CONTAINMENT AND DISPOSAL OF LEAD PAINT CLEANING RESIDUES NO. 2	L SUM	1		1
* Z0007106	CONTAINMENT AND DISPOSAL OF LEAD PAINT CLEANING RESIDUES NO. 6	L SUM	1		1
* Z0007107	CONTAINMENT AND DISPOSAL OF LEAD PAINT CLEANING RESIDUES NO. 7	L SUM	1		1
* Z0007109	CONTAINMENT AND DISPOSAL OF LEAD PAINT CLEANING RESIDUES NO. 9	L SUM	1		1
* Z0007113	CONTAINMENT AND DISPOSAL OF LEAD PAINT CLEANING RESIDUES NO. 13	L SUM	1		1
Z0010400	CLEANING BRIDGE SEATS	SQ FT	9250		9250
* Z0010501	CLEANING AND PAINTING STEEL BRIDGE NO. 1	L SUM	1		1
* Z0010502	CLEANING AND PAINTING STEEL BRIDGE NO. 2	L SUM	1		1
* SPECIALTY ITEM					

REV. - MS

USER NAME = owenbj	DESIGNED -	REVISED -
PLOT SCALE = 100.0000' / in.	DRAWN -	REVISED -
PLOT DATE = 8/14/2019	CHECKED -	REVISED -
	DATE -	REVISED -

**STATE OF ILLINOIS  
DEPARTMENT OF TRANSPORTATION**

SUMMARY OF QUANTITIES			
SCALE:	SHEET 22	OF 25 SHEETS	STA. TO STA.

F.A.I. RTE.	SECTION	COUNTY	TOTAL SHEETS	SHEET NO.
255	82-(3,2,1)RS	ST. CLAIR	623	24
CONTRACT NO. 76E13				
ILLINOIS FED. AID PROJECT				



MODEL: Default  
 FILE: Model\_C:\p1\pub\room.dwg  
 I:\Illinois\gov\PWIDOT\Documents\DOT\_Offices\Dir\ctc @Projects\076E13\CADDData\CAD\Sheet\076E13-41-500.dgn

CODE NO.	ITEM	UNIT	TOTAL QUANTITY	CONSTRUCTION CODE	
				90% FEDERAL / 10% STATE	
				ROADWAY	BRIDGE
				0005 URBAN	0013 URBAN
* Z0010506	CLEANING AND PAINTING STEEL BRIDGE NO. 6	L SUM	1		1
* Z0010507	CLEANING AND PAINTING STEEL BRIDGE NO. 7	L SUM	1		1
* Z0010508	CLEANING AND PAINTING STEEL BRIDGE NO. 8	L SUM	1		1
* Z0010509	CLEANING AND PAINTING STEEL BRIDGE NO. 9	L SUM	1		1
* Z0010510	CLEANING AND PAINTING STEEL BRIDGE NO. 10	L SUM	1		1
* Z0010511	CLEANING AND PAINTING STEEL BRIDGE NO. 11	L SUM	1		1
* Z0010512	CLEANING AND PAINTING STEEL BRIDGE NO. 12	L SUM	1		1
* Z0010513	CLEANING AND PAINTING STEEL BRIDGE NO. 13	L SUM	1		1
* Z0010514	CLEANING AND PAINTING STEEL BRIDGE NO. 14	L SUM	1		1
* Z0010515	CLEANING AND PAINTING STEEL BRIDGE NO. 15	L SUM	1		1
* Z0010516	CLEANING AND PAINTING STEEL BRIDGE NO. 16	L SUM	1		1
* Z0010517	CLEANING AND PAINTING STEEL BRIDGE NO. 17	L SUM	1		1
* Z0010518	CLEANING AND PAINTING STEEL BRIDGE NO. 18	L SUM	1		1
* Z0010519	CLEANING AND PAINTING STEEL BRIDGE NO. 19	L SUM	1		1
* SPECIALTY ITEM					

USER NAME = owenbj	DESIGNED -	REVISED -
PLOT SCALE = 100.0000' / in.	DRAWN -	REVISED -
PLOT DATE = 8/14/2019	CHECKED -	REVISED -
	DATE -	REVISED -

**STATE OF ILLINOIS  
DEPARTMENT OF TRANSPORTATION**

SUMMARY OF QUANTITIES			
SCALE:	SHEET 23	OF 25 SHEETS	STA. TO STA.

F.A.I. RTE.	SECTION	COUNTY	TOTAL SHEETS	SHEET NO.
255	82-(3,2,1)RS	ST. CLAIR	623	25
CONTRACT NO. 76E13			ILLINOIS FED. AID PROJECT	

MODEL: Default  
 FILE: MainE\_PlanRoom.dwg  
 ILLINOIS.GOV:PWIDOT\Documents\DOT\_Offices\District 8\Projects\076E13\CADDData\CAD\Sheets\076E13-ph-500.dgn

CODE NO.	ITEM	UNIT	TOTAL QUANTITY	CONSTRUCTION CODE	
				90% FEDERAL / 10% STATE	
				ROADWAY	BRIDGE
				0005 URBAN	0013 URBAN
Z0012754	STRUCTURAL REPAIR OF CONCRETE (DEPTH EQUAL TO OR LESS THAN 5 INCHES)	SQ FT	5509		5509
Z0012800	CONCRETE PAVEMENT SCARIFICATION	SQ YD	541761	541761	
Z0013798	CONSTRUCTION LAYOUT	L SUM	1	1	
Z0015500	DEBRIS REMOVAL	L SUM	1	1	
Z0016001	DECK SLAB REPAIR (FULL DEPTH, TYPE I)	SQ YD	19		19
Z0016002	DECK SLAB REPAIR (FULL DEPTH, TYPE II)	SQ YD	799		799
Z0016200	DECK SLAB REPAIR (PARTIAL)	SQ YD	1065		1065
Z0016702	DETOUR SIGNING	L SUM	1	1	
Z0018002	DRAINAGE SCUPPERS, DS-11	EACH	7		7
Z0022800	FENCE REMOVAL	FOOT	865	865	
Z0029090	DIAMOND GRINDING (BRIDGE SECTION)	SQ YD	2913	2913	
Z0030904	TIGHTEN SPLICE FLANGE	EACH	5	5	
Z0033700	LONGITUDINAL JOINT SEALANT	FOOT	624113	613058	11055
Z0034105	MATERIAL TRANSFER DEVICE	TON	80061	80061	

REV. - MS

USER NAME = owerbj	DESIGNED -	REVISED -
	DRAWN -	REVISED -
PLOT SCALE = 100.0000 ' / in.	CHECKED -	REVISED -
PLOT DATE = 8/14/2019	DATE -	REVISED -

**STATE OF ILLINOIS  
DEPARTMENT OF TRANSPORTATION**

**SUMMARY OF QUANTITIES**

SCALE: SHEET 24 OF 25 SHEETS STA. TO STA.

F.A.I. RTE.	SECTION	COUNTY	TOTAL SHEETS	SHEET NO.
255	82-(3,2,1)RS	ST. CLAIR	623	26
				CONTRACT NO. 76E13
ILLINOIS FED. AID PROJECT				

