

STATE OF ILLINOIS
DEPARTMENT OF TRANSPORTATION

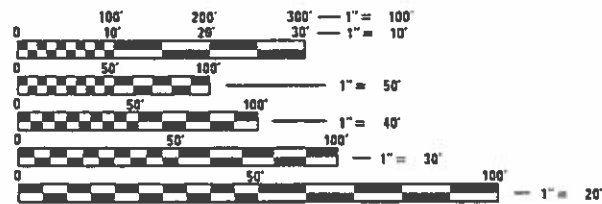
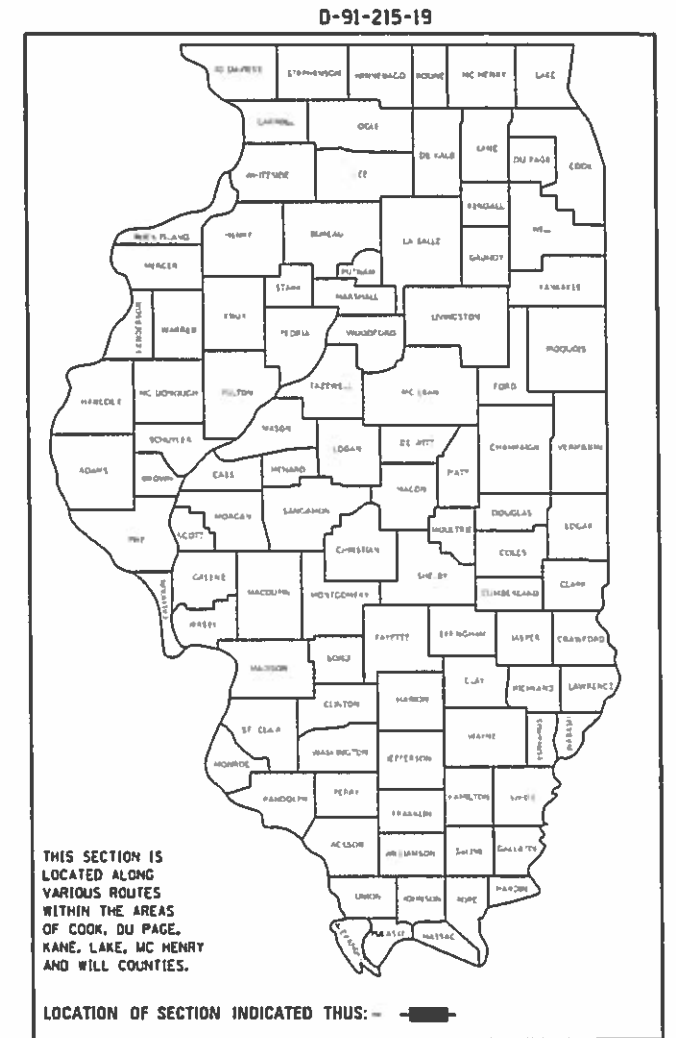
| | | | | |
|-----------------------------|------------|--------|---|--------------|
| FA RTE. | SECTION | COUNTY | TOTAL SHEETS | SHEET NO. |
| VAR. | 2019-067-1 | * | 13 | 1 |
| ILLINOIS CONTRACT NO. 62J56 | | | * COOK, DU PAGE, LAKE, KANE, McHENRY AND WILL | |

FOR INDEX OF SHEETS, SEE SHEET NO. 2

PROPOSED HIGHWAY PLANS

ROUTE: VARIOUS DISTRICT ONE
SECTION: 2019-067-1
TRAFFIC CONTROL

COUNTY: VARIOUS (COOK, DUPAGE, LAKE, KANE, McHENRY AND WILL)
C-91-444-19



FULL SIZE PLANS HAVE BEEN PREPARED USING STANDARD ENGINEERING SCALES. REDUCED SIZED PLANS WILL NOT CONFORM TO STANDARD SCALES. IN MAKING MEASUREMENTS ON REDUCED PLANS, THE ABOVE SCALES MAY BE USED.

J.U.L.I.E.
JOINT UTILITY LOCATION INFORMATION FOR EXCAVATION
1-800-892-0123
OR 811

PROJECT ENGINEER: J. ALAIN MIDY (847) 221-3056
PROJECT MANAGER: FAWAD AQUEEL (847) 705-4247

CONTRACT NO. 62J56

STATE OF ILLINOIS
DEPARTMENT OF TRANSPORTATION

SUBMITTED ~~SEPTEMBER~~ SEPTEMBER 13 20 19

Anthony J. Crivello / *AKB*
REGIONAL ENGINEER

Oct 4 2019

Oct 4 2019
ENGINEER OF DESIGN AND ENVIRONMENT

Paul C. [Signature]
DIRECTOR OF HIGHWAYS PROJECT IMPLEMENTATION

PRINTED BY THE AUTHORITY
OF THE STATE OF ILLINOIS

INDEX OF SHEETS

1. TITLE SHEET
2. INDEX OF SHEETS , STATE STANDARDS AND GENERAL NOTES
- 3 -4. SUMMARY OF QUANTITIES
5. ENTRANCE RAMP AND CLOSURE DETAILS (TC-8)
6. SINGLE LANE WEAVE (MODIFIED) (TC-9)
7. TRAFFIC CONTROL AND PROTECTION FOR SIDE ROADS, INTERSECTIONS AND DRIVEWAYS (MODIFIED) (TC-10)
8. TRAFFIC CONTROL AND PROTECTION AT TURN BAYS (TO REMAIN OPEN TO TRAFFIC) (MODIFIED) (TC-14)
9. TRAFFIC CONTROL FOR SHOULDER CLOSURES AND PARTIAL RAMP CLOSURES (MODIFIED) (TC-17)
10. DETOUR SIGNING FOR CLOSING STATE HIGHWAYS (TC-21)
11. ARTERIAL ROAD INFORMATION SIGN (TC-22)
12. TRAFFIC CONTROL DETAILS FOR FREEWAY CENTER LANE CLOSURE, SHOULDER LANE (TC-25)
13. DRIVEWAY ENTRANCE SIGNING (TC-26)

STATE STANDARDS

| | |
|-----------|---|
| 701006-05 | OFF-ROAD OPERATION 2L, 2W, 15' TO PAVEMENT EDGE FOR SPEEDS > 45 MPH |
| 701011-04 | OFF-ROAD MOVING OPERATION 2L, 2W, DAY ONLY |
| 701301-04 | LANE CLOSURE, 2L 2W, SHORT TIME OPERATIONS |
| 701400-09 | APPROACH TO LANE CLOSURE, FREEWAY/EXPRESSWAY |
| 701401-12 | LANE CLOSURE, FREEWAY/EXPRESSWAY |
| 701406-12 | LANE CLOSURE, FREEWAY/EXPRESSWAY, DAY OPERATION ONLY |
| 701411-09 | LANE CLOSURE, MULTILANE AT ENTERANCE/EXIT RAMP FOR SPEEDS ≥ 45 MPH |
| 701422-10 | LANE CLOSURE, MULTILANE FOR SPEEDS ≥ 45 MPH TO 55 MPH |
| 701431-13 | LANE CLOSURE, MULTILANE, UNDIVIDED WITH CROSSOVER FOR SPEEDS ≥ 45 MPH TO 55 MPH |
| 701446-09 | TWO LANE CLOSURE, FREEWAY/EXPRESSWAY |
| 701502-09 | URBAN LANE CLOSURE, 2L, 2W WITH BIDIRECTIONAL LEFT TURN LANE |
| 701601-09 | URBAN LANE CLOSURE, MULTI-LANE, 1W OR 2W WITH NON-TRAVERSABLE MEDIAN |
| 701602-10 | URBAN LANE CLOSURE, MULTI-LANE, 2W WITH BIDIRECTIONAL LEFT TURN LANE |
| 701606-10 | URBAN LANE CLOSURE, MULTI-LANE, 2W WITH MOUNTABLE MEDIAN |
| 701701-10 | URBAN LANE CLOSURE, INTERSECTION |
| 701801-06 | LANE CLOSURE, MULTILANE, 1W OR 2W, CROSSWALK OR SIDEWALK CLOSURE |
| 701901-08 | TRAFFIC CONTROL DEVICES |

GENERAL NOTES

THE CONTRACTOR SHALL BE REQUIRED TO PROVIDE ACCESS TO ABUTTING PROPERTY AT ALL TIMES DURING CONSTRUCTION OF THIS PROJECT.

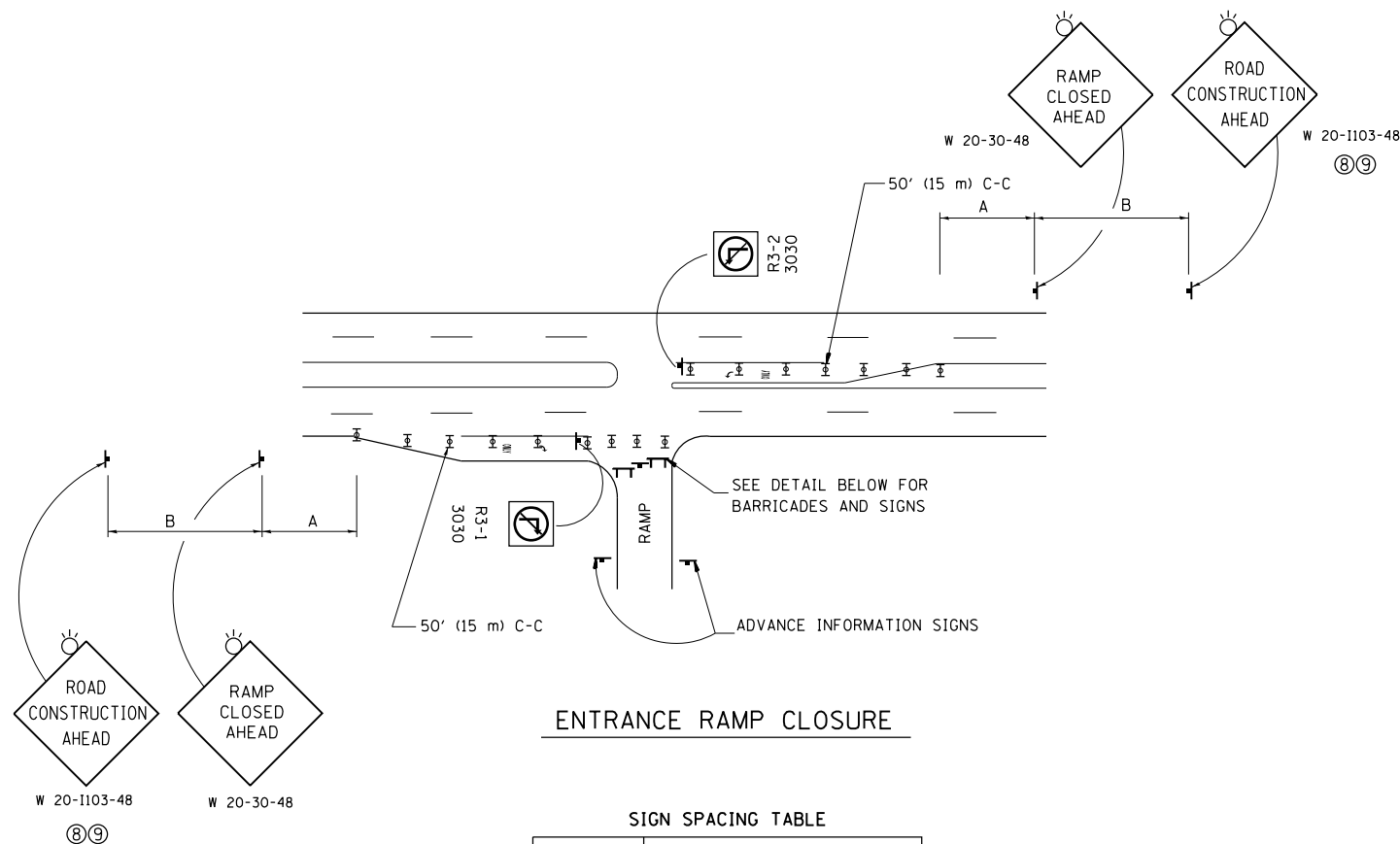
THE "ARTERIAL ROAD INFORMATION SIGN (TC-22)" IS APPLICABLE ONLY TO ARTERIAL ROADS AND SHALL NOT BE APPLIED TO EXPRESSWAYS.

MODEL: Default
 FILE: \\blairc:\pub\blair\room\dat\illinois.gov\PI\DOT\Documents\DOT_Offices\Blair\1\Projects\Design\CADD\blair\Design\Traffic_Matht.dgn

| | | | | | | | | | | |
|--|------------------------------|------------|-----------|---|---|-----------|------------|--------------------|--------------|-----------|
| | USER NAME = midyja | DESIGNED - | REVISED - | STATE OF ILLINOIS DEPARTMENT OF TRANSPORTATION | INDEX OF SHEETS, STATE STANDARDS & GENERAL NOTES | F.A. RTE. | SECTION | COUNTY | TOTAL SHEETS | SHEET NO. |
| | | DRAWN - | REVISED - | | | VAR. | 2019-067-I | VARIOUS | 13 | 2 |
| | PLOT SCALE = 100,0000' / in. | CHECKED - | REVISED - | | | | | CONTRACT NO. 62J56 | | |
| | PLOT DATE = 9/13/2019 | DATE - | REVISED - | | SCALE: | SHEET | OF | SHEETS | STA. | TO STA. |
| | | | | | | ILLINOIS | | FED. AID PROJECT | | |

| SUMMARY OF QUANTITIES | | | URBAN TOTAL QUANTITIES | CONSTRUCTION TYPE CODE | | | | |
|-----------------------|--|------|------------------------|------------------------|--|--|--|--|
| CODE NO | ITEM | UNIT | | 0021 | | | | |
| 70100205 | TRAFFIC CONTROL AND PROTECTION, STANDARD 701401 | EACH | 200 | 200 | | | | |
| 70100315 | TRAFFIC CONTROL AND PROTECTION, STANDARD 701422 | EACH | 10 | 10 | | | | |
| 70100350 | TRAFFIC CONTROL AND PROTECTION, STANDARD 701101 | EACH | 5 | 5 | | | | |
| 70100400 | TRAFFIC CONTROL AND PROTECTION, STANDARD 701431 | EACH | 5 | 5 | | | | |
| 70100420 | TRAFFIC CONTROL AND PROTECTION, STANDARD 701411 | EACH | 15 | 15 | | | | |
| 70100430 | TRAFFIC CONTROL AND PROTECTION, STANDARD 701446 | EACH | 80 | 80 | | | | |
| 70100701 | TRAFFIC CONTROL AND PROTECTION, STANDARD 701406 | EACH | 10 | 10 | | | | |
| 70102624 | TRAFFIC CONTROL AND PROTECTION, STANDARD 701502 | EACH | 5 | 5 | | | | |
| 70102626 | TRAFFIC CONTROL AND PROTECTION, STANDARD 701606 | EACH | 5 | 5 | | | | |
| 70102631 | TRAFFIC CONTROL AND PROTECTION, STANDARD 701601 | EACH | 10 | 10 | | | | |

| SUMMARY OF QUANTITIES | | | URBAN TOTAL QUANTITIES | CONSTRUCTION TYPE CODE | | | | |
|-----------------------|--|--------|------------------------|------------------------|--|--|--|--|
| CODE NO | ITEM | UNIT | | 0021 | | | | |
| 70102633 | TRAFFIC CONTROL AND PROTECTION, STANDARD 701602 | EACH | 5 | 5 | | | | |
| 70102637 | TRAFFIC CONTROL AND PROTECTION, STANDARD 701701 | EACH | 5 | 5 | | | | |
| 70102642 | TRAFFIC CONTROL AND PROTECTION, STANDARD 701801 | EACH | 5 | 5 | | | | |
| X0320581 | DRUMS | EACH | 1000 | 1000 | | | | |
| X0320582 | BARRICADES, TYPE I | EACH | 500 | 500 | | | | |
| X0320583 | BARRICADES, TYPE II | EACH | 100 | 100 | | | | |
| X0320584 | DIRECTIONAL INDICATOR BARRICADES | EACH | 100 | 100 | | | | |
| X0320585 | VERTICAL BARRICADES | EACH | 100 | 100 | | | | |
| X0320586 | FLEXIBLE DELINEATORS | EACH | 100 | 100 | | | | |
| X7010237 | CHANGEABLE MESSAGE SIGN, SPECIAL | CAL DA | 30 | 30 | | | | |
| X7010808 | TRAFFIC CONTROL AND PROTECTION, STANDARD TC8 | EACH | 150 | 150 | | | | |
| X7010809 | TRAFFIC CONTROL AND PROTECTION, STANDARD TC9 | EACH | 25 | 25 | | | | |
| X7010810 | TRAFFIC CONTROL AND PROTECTION, STANDARD TC10 | EACH | 5 | 5 | | | | |

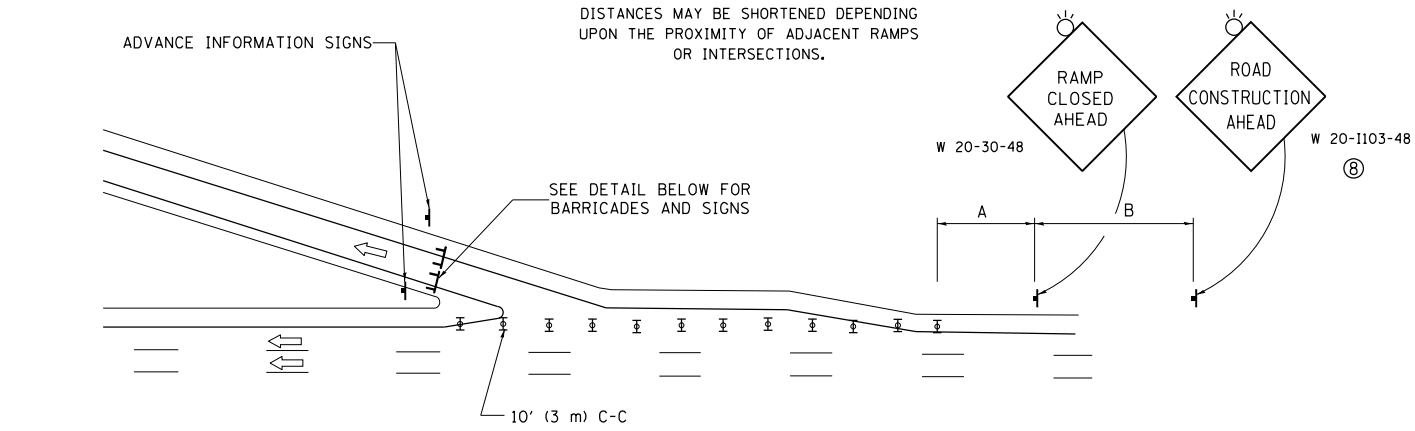


ENTRANCE RAMP CLOSURE

SIGN SPACING TABLE

| FACILITY | DISTANCE BETWEEN SIGNS | |
|-------------------------|------------------------|------------------|
| | A | B |
| EXPRESSWAY >24 HOURS | 1000' (300 m) | 1500' (450 m) |
| EXPRESSWAY <24 HOURS | 500' (150 m) | 500' (150 m) |
| ARTERIAL 55 MPH | 500' (150 m) | 500' (150 m) |
| ARTERIAL 50-45 MPH | 350' (100 m) | 350' (100 m) |
| ARTERIAL <45 MPH | 200' (60 m) | 200' (60 m) |

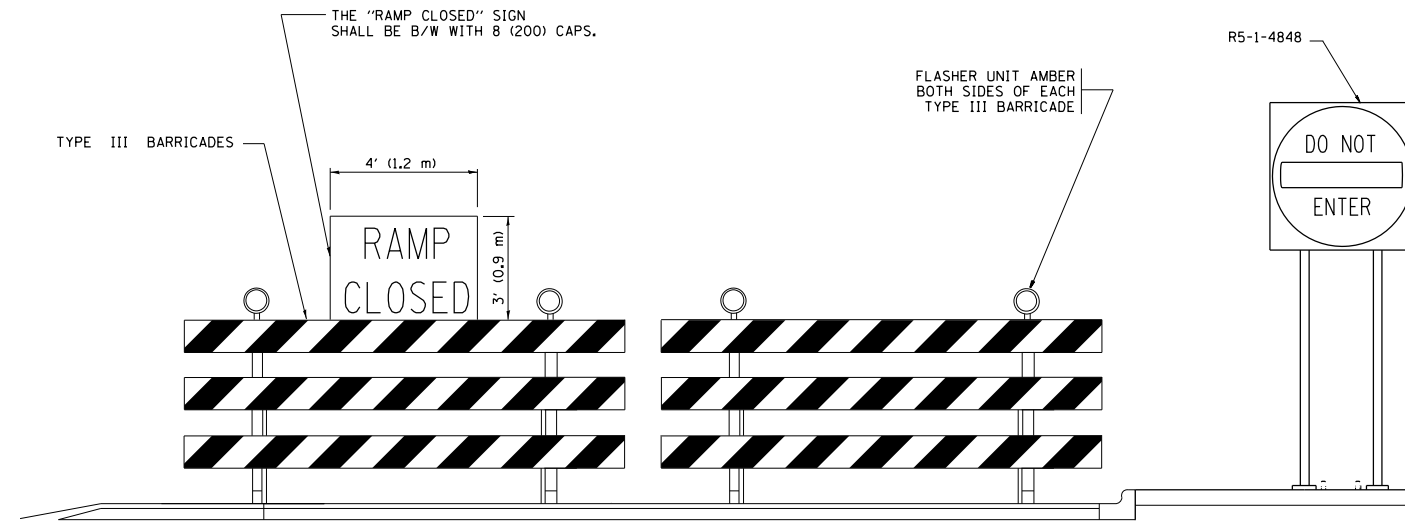
DISTANCES MAY BE SHORTENED DEPENDING UPON THE PROXIMITY OF ADJACENT RAMPS OR INTERSECTIONS.



EXIT RAMP CLOSURE

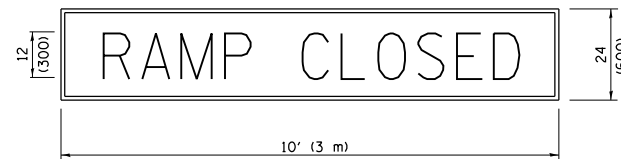
SYMBOLS

- ⊥ TYPE II BARRICADE OR DRUM
- ⊥ TYPE III BARRICADE WITH 2 FLASHING LIGHTS



DETAIL FOR REQUIRED BARRICADES & SIGNS

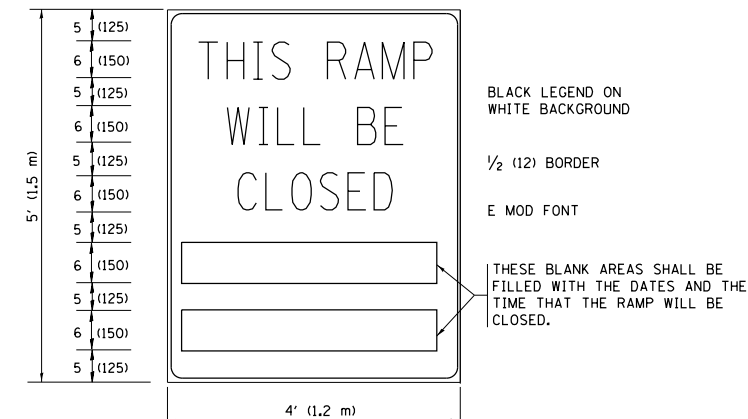
RAMP CLOSURE ADVANCE WARNING SIGN



BLACK LEGEND ON ORANGE BACKGROUND MOUNTED DIAGONALLY
E MOD FONT
1 (25) BORDER

THESE SIGNS ARE REQUIRED ON ALL THE EXIT GUIDE SIGNS FOR EXIT RAMPS THAT WILL BE CLOSED FOR MORE THAN FOUR (4) CONSECUTIVE DAYS.

RAMP CLOSURE ADVANCE INFORMATION SIGN



BLACK LEGEND ON WHITE BACKGROUND
1/2 (12) BORDER
E MOD FONT

THESE BLANK AREAS SHALL BE FILLED WITH THE DATES AND THE TIME THAT THE RAMP WILL BE CLOSED.

THESE SIGNS ARE REQUIRED ON BOTH SIDES OF THE RAMP, MINIMUM OF 1 WEEK IN ADVANCE OF THE CLOSURE.

THESE SIGNS SHALL BE FABRICATED AND PAID FOR ACCORDING TO THE TEMPORARY INFORMATION SIGNING SPECIAL PROVISION

GENERAL NOTES:

- ① CONES MAY BE SUBSTITUTED FOR DRUMS OR TYPE II BARRICADES DURING DAY OPERATIONS. CONES SHALL BE A MINIMUM OF 28 (700) HIGH.
- ② VERTICAL BARRICADES SHALL NOT BE USED FOR RAMP CLOSURES.
- ③ A FLAGGER SHALL BE POSITIONED AT EACH CLOSED RAMP THAT IS OPEN TO CONSTRUCTION VEHICLES, PRECEDED BY A W20-7 FLAGGER WARNING SIGN.
- ④ ALL ROUTE MARKERS AND TRAILBLAZER ASSEMBLIES WHICH DIRECT MOTORISTS TO A CLOSED ENTRANCE RAMP SHALL BE COVERED WHEN THE RAMP IS CLOSED FOR MORE THAN FOUR (4) DAYS.
- ⑤ THE SIGNING AND BARRICADING WHICH IS REQUIRED BY THIS DETAIL SHALL BE INCLUDED IN THE COST OF TRAFFIC CONTROL AND PROTECTION (EXPRESSWAYS).
- ⑥ AUTHORIZATION FROM THE DISTRICT'S BUREAU OF TRAFFIC IS REQUIRED FOR ALL RAMP CLOSURES.
- ⑦ THE RAMP CLOSURE ADVANCE INFORMATION SIGNS SHALL BE ERECTED IF THE CLOSURE TIME EXCEEDS TWENTY-FOUR (24) HOURS. ADDITIONAL ADVANCE WARNING SIGNS ON EXIT GUIDE SIGNING WILL BE REQUIRED FOR EXIT RAMP CLOSURES THAT EXCEED FOUR (4) DAYS IN LENGTH.
- ⑧ ROAD CONSTRUCTION AHEAD SIGNS MAY BE OMITTED WHEN THIS DETAIL IS USED IN CONJUNCTION WITH OTHER TRAFFIC CONTROL THAT ALREADY INCLUDES A ROAD CONSTRUCTION AHEAD SIGN.
- ⑨ ARTERIAL ROAD CONSTRUCTION AHEAD SIGNS SHALL BE INSTALLED ON THE LEFT SIDE OF TRAFFIC IF THE MEDIAN IS MORE THAN 10 FT WIDE.

ALL DIMENSIONS ARE IN INCHES (MILLIMETERS) UNLESS OTHERWISE SHOWN.

| | | | |
|--|------------------------------|-------------------|------------------------|
| FILE NAME = | USER NAME = midyja | DESIGNED - D.W.S. | REVISED - S.P.B. 01-07 |
| pw:\planroom.dot.illinois.gov\PIWIDOT\Documents\IDOT Offices\District 1\Projects\Design\Drawn\Design\Traffic_Maint.dgn | | CHECKED - | REVISED - S.P.B. 12-09 |
| Default | PLOT SCALE = 100.0000' / in. | DATE - 02-83 | REVISED - M.D. 06-13 |
| | PLOT DATE = 9/13/2019 | | REVISED - M.D. 01-18 |

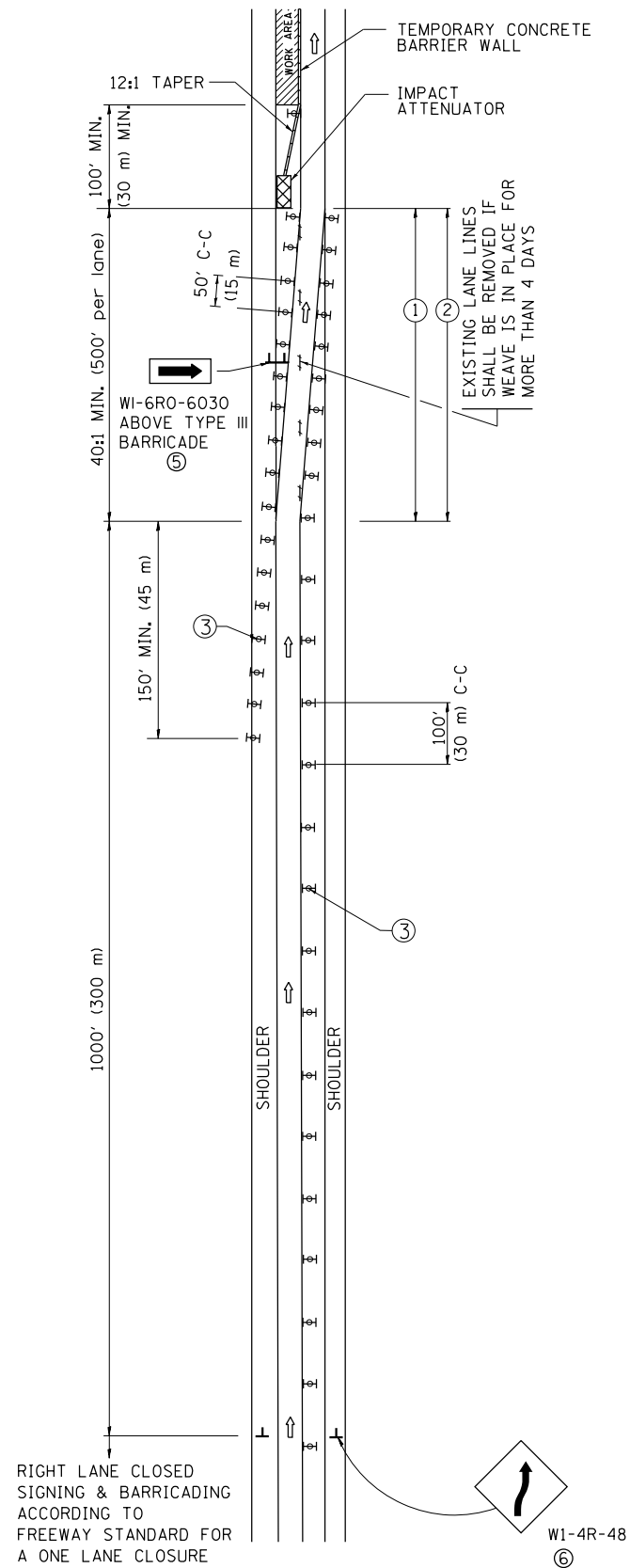
STATE OF ILLINOIS
DEPARTMENT OF TRANSPORTATION

ENTRANCE AND EXIT RAMP
CLOSURE DETAILS

SCALE: NONE SHEET 1 OF 1 SHEETS STA. TO STA.

| | | | | |
|---------------------------|------------|---------|--------------------|-----------|
| F.A. RTE. | SECTION | COUNTY | TOTAL SHEETS | SHEET NO. |
| VAR. | 2019-067-1 | VARIOUS | 13 | 5 |
| TC-08 | | | CONTRACT NO. 62J56 | |
| ILLINOIS FED. AID PROJECT | | | | |

SINGLE LANE WEAVE



TEMPORARY CONCRETE BARRIER WALL
IMPACT ATTENUATOR
EXISTING LANE LINES SHALL BE REMOVED IF WEAVE IS IN PLACE FOR MORE THAN 4 DAYS

SYMBOLS

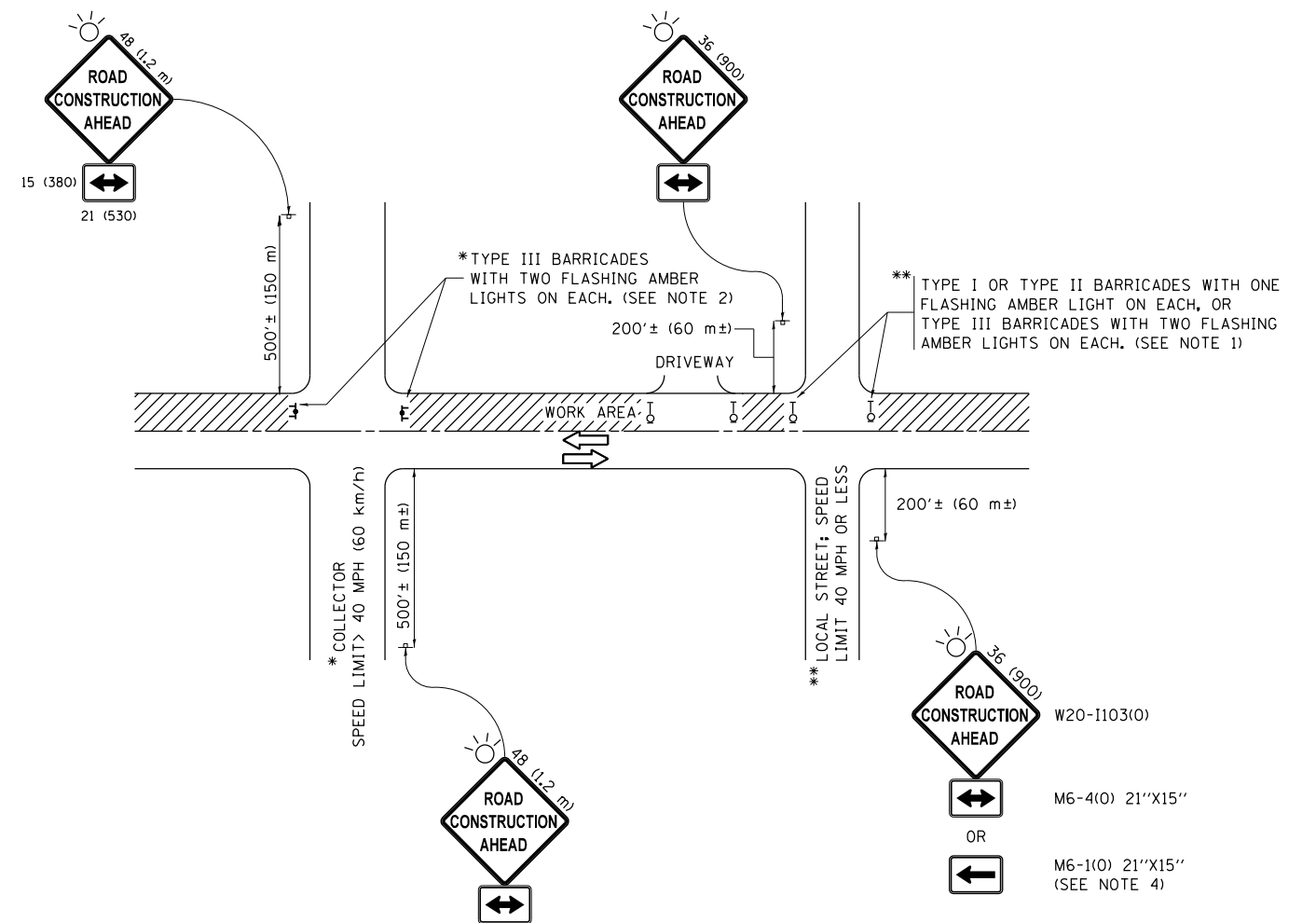
- DIRECTION OF TRAFFIC
- WORK AREA
- SIGN ON PORTABLE OR PERMANENT SUPPORT
- TYPE II BARRICADE OR DRUM WITH MONO-DIRECTIONAL STEADY BURNING LIGHT
- TEMPORARY CONCRETE BARRIER WALL
- IMPACT ATTENUATOR

GENERAL NOTES

- ① EXISTING CONFLICTING PAVEMENT MARKING LINES SHALL BE REMOVED. PAVEMENT MARKING REMOVAL SHALL NOT BE REQUIRED FOR SINGLE LANE WEAVES UNDER 4 DAYS IN DURATION.
- ② CONTINUOUS REFLECTIVE TEMPORARY PAVEMENT MARKING TAPE SHALL BE PLACED THROUGHOUT THE TAPER AND FOR 300' (90 m) ALONG SIDE THE WORK AREA WHERE THE CLOSURE TIME IS GREATER THAN FOURTEEN DAYS. THE LEFT EDGE LINE SHALL BE YELLOW AND THE RIGHT EDGE LINE SHALL BE WHITE. FOR MULTI-LANE WEAVES LANE LINES SHALL BE 5 INCH, 10'-30' (3 m-9 m) SKIP DASH, WHITE.
- ③ PLASTIC DRUMS WITH STEADY BURN LIGHTS AT 50' (15 m) C-C SPACING IN TAPERS AND 100' (30 m) C-C SPACING IN TANGENTS.
- ④ ALL SIGNS SHALL BE POST MOUNTED IF THE CLOSURE TIME EXCEEDS FOUR DAYS.
- ⑤ TYPE III BARRICADES MAY BE OMITTED FOR SINGLE-LANE WEAVES UNDER 24-HOURS IN DURATION. W1-6 SIGNS WILL STILL BE REQUIRED. IF THE WIDTH OF OFFSET IS LESS THAN 6' THEN THE TYPE III BARRICADE WITH ATTACHED ARROW SIGN PANEL CAN BE ELIMINATED IN THE TAPER AREAS.
- ⑥ WHEN THE LENGTH OF THE SHIFTED SEGMENT (DISTANCE BETWEEN WEAVE POINTS) IS LESS THAN 1500', DOUBLE REVERSE CURVE SIGNS (W24-1) SHOULD BE USED INSTEAD OF THE REVERSE CURVE (W1-4) SIGNS. ARROWS ON THE 4'X8' "ALL TRAFFIC" SIGNS SHALL BE THE SAME SHAPE.
- ⑦ THE NUMBER OF ARROWS ON THESE SIGNS SHALL MATCH THE NUMBER OF LANES OPEN TO TRAFFIC.

ALL DIMENSIONS ARE IN INCHES (MILLIMETERS) UNLESS OTHERWISE SHOWN

| | | | | | | | | | | | | |
|--|--------------------|---------------------|---------------------|---|---|------|---------------------------|-----------|--|---------|--------------|-----------|
| FILE NAME = | USER NAME = midyja | DESIGNED - DWS | REVISED - JAF 02-06 | STATE OF ILLINOIS DEPARTMENT OF TRANSPORTATION | TRAFFIC CONTROL DETAILS FOR FREEWAY SINGLE & MULTI-LANE WEAVE (MODIFIED) | | | F.A. RTE. | SECTION | COUNTY | TOTAL SHEETS | SHEET NO. |
| pw:\planroom.dot.illinois.gov\PIDOT\Documents\IDOT Offices\District 1\Projects\Design\Drawn\Design\Traffic_Maint.dgn | DRAWN | REVISED - SPB 01-07 | REVISED - MD 06-13 | | | | | VAR. | 2019-067-1 | VARIOUS | 13 | 6 |
| PLOT SCALE = 100.0000' / in. | CHECKED - | REVISED - SPB 12-09 | DATE - 02-87 | | TC-09 | | CONTRACT NO. 62J56 | | FED. ROAD DIST. NO. 1 ILLINOIS FED. AID PROJECT | | | |
| PLOT DATE = 9/13/2019 | DATE - | REVISED - MD 06-13 | SCALE: NONE | | SHEET NO. 1 OF 1 SHEETS | STA. | TO STA. | | | | | |



NOTES:

1. SIDE ROAD WITH A SPEED LIMIT OF 40 MPH (60 km/h) OR LESS AS SHOWN ON THE DRAWING AND AS DIRECTED BY THE ENGINEER:
 - a) ONE "ROAD CONSTRUCTION AHEAD" SIGN 36 x 36 (900x900) WITH A FLASHER MOUNTED ON IT APPROXIMATELY 200' (60 m) IN ADVANCE OF THE MAIN ROUTE.
 - b) THE CLOSED PORTION OF THE MAIN ROUTE SHALL BE PROTECTED BY BLOCKING WITH TYPE I, TYPE II OR TYPE III BARRICADES, 1/3 OF THE CROSS SECTION OF THE CLOSED PORTION.
2. SIDE ROAD WITH A SPEED LIMIT GREATER THAN 40 MPH (60 km/h) AS SHOWN ON THE DRAWING AND AS DIRECTED BY THE ENGINEER:
 - a) ONE "ROAD CONSTRUCTION AHEAD" SIGN 48 x 48 (1.2 m x 1.2 m) WITH A FLASHER MOUNTED ON IT APPROXIMATELY 500' (150 m) IN ADVANCE OF THE MAIN ROUTE.
 - b) THE CLOSED PORTION OF THE MAIN ROUTE SHALL BE PROTECTED BY BLOCKING WITH TYPE III BARRICADES, 1/2 OF THE CROSS SECTION OF THE CLOSED PORTION.
3. CONES MAY BE SUBSTITUTED FOR BARRICADES OR DRUMS AT HALF THE SPACING DURING DAY OPERATIONS. CONES SHALL BE A MINIMUM OF 28 (710) IN HEIGHT.
4. WHEN THE SIDE ROAD LIES BETWEEN THE BEGINNING OF THE MAINLINE SIGNING AND THE WORK ZONE, A SINGLE HEADED ARROW (M6-1) SHALL BE USED IN LIEU OF THE DOUBLE HEADED ARROW (M6-4).
5. WHEN WORK IS BEING PERFORMED ON A SIDE ROAD OR DRIVEWAY, FOLLOW THE APPLICABLE STANDARD(S). THE DIRECTIONAL ARROW (M6-1 OR M6-4) SHALL BE COVERED OR REMOVED WHEN NO LONGER CONSISTENT WITH THE TRAFFIC CONTROL SET-UP.
6. ADVANCE WARNING SIGNS ARE TO BE OMITTED ON DRIVEWAYS UNLESS OTHERWISE SPECIFIED.

All dimensions are in inches (millimeters) unless otherwise shown.

| | | | |
|---|------------------------------|-------------------|---------------------------------|
| FILE NAME = | USER NAME = midyja | DESIGNED - L.H.A. | REVISED - A. HOUSEH 10-15-96 |
| pw\planroom.dot.illinois.gov\PIDOT\Documents\IDOT Offices\District 1\Projects\Design\Drawn\Design\Traffic_Maint.dgn | | CHECKED - | REVISED - T. RAMMACHER 01-06-00 |
| Default | PLOT SCALE = 100.0000' / in. | DATE - 06-89 | REVISED - A. SCHUETZE 07-01-13 |
| | PLOT DATE = 9/13/2019 | | REVISED - A. SCHUETZE 09-15-16 |

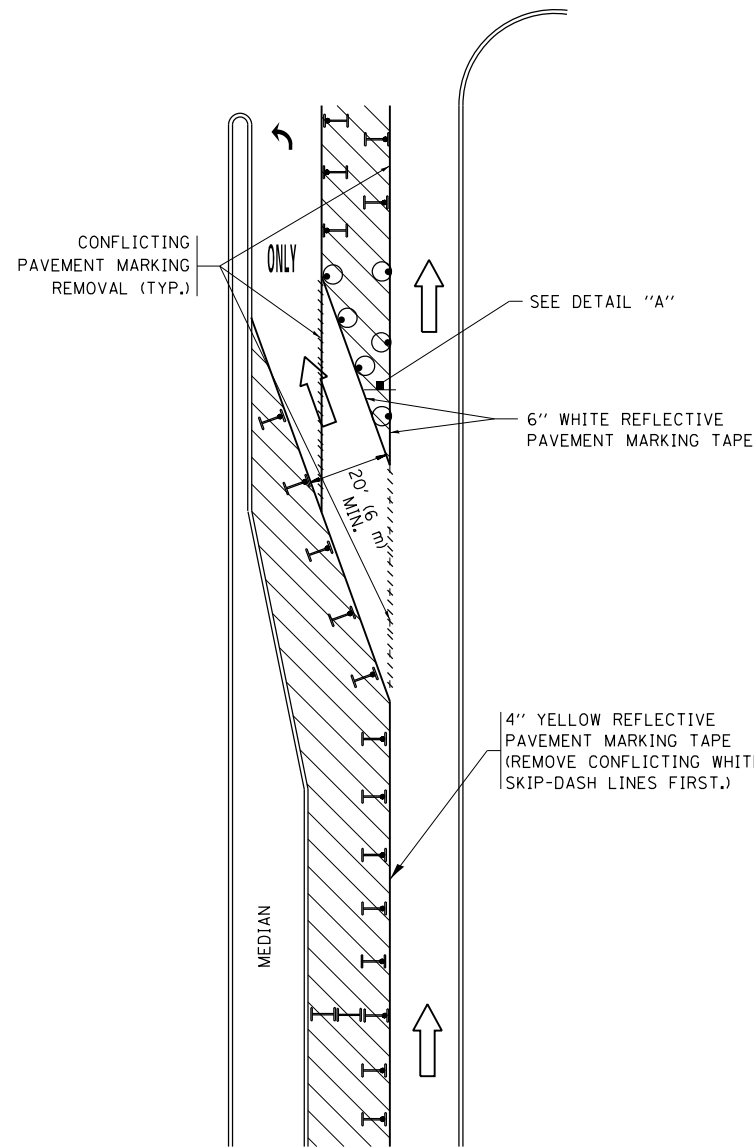
**STATE OF ILLINOIS
DEPARTMENT OF TRANSPORTATION**

**TRAFFIC CONTROL AND PROTECTION FOR
SIDE ROADS, INTERSECTIONS, AND DRIVEWAYS (MODIFIED)**

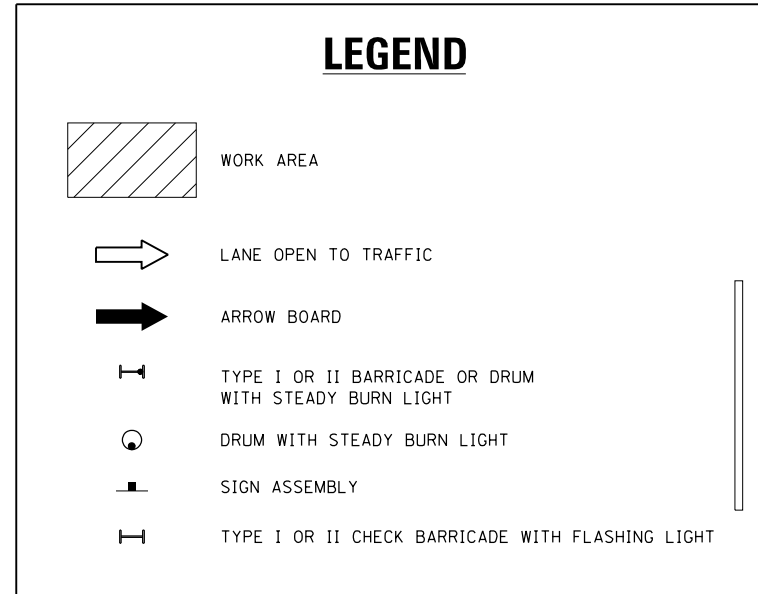
SCALE: NONE SHEET 1 OF 1 SHEETS STA. TO STA.

| F.A. RTE. | SECTION | COUNTY | TOTAL SHEETS | SHEET NO. |
|---------------------------|------------|---------|---------------------------|-----------|
| VAR. | 2019-067-1 | VARIOUS | 13 | 7 |
| TC-10 | | | CONTRACT NO. 62J56 | |
| ILLINOIS FED. AID PROJECT | | | | |

TURN BAY ENTRANCE WITHIN A LANE CLOSURE

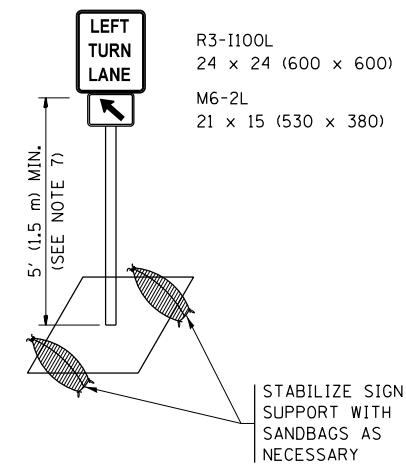


FIGURE



NOTES:

1. A) WHEN "L" IS \leq THE STORAGE LENGTH OF THE TURN LANE (AS SHOWN IN FIG. 1), USE FIGURE 1.
B) WHEN "L" IS $>$ THE STORAGE LENGTH OF THE TURN LANE OR THE TURN LANE IS WITHIN THE LANE CLOSURE, USE FIGURE 2.
2. CONES MAY BE SUBSTITUTED FOR BARRICADES OR DRUMS AT HALF THE SPACING DURING DAY OPERATIONS. CONES SHALL BE A MINIMUM OF 28 (710) IN HEIGHT.
3. LIGHTS WILL NOT BE REQUIRED ON BARRICADES OR DRUMS FOR DAY OPERATIONS. ALL LIGHTS SHALL BE MONODIRECTIONAL.
4. REFLECTIVE TEMPORARY PAVEMENT MARKINGS SHALL BE PLACED THROUGHOUT THE BARRICADED AREAS OF EACH TURN BAY AS SHOWN WHERE THE CLOSURE TIME IS GREATER THAN FOURTEEN (14) DAYS.
5. THIS APPLICATION ALSO APPLIES WHEN WORK IS BEING PERFORMED IN THE RIGHT LANE(S) AND THE RIGHT TURN BAY IS TO REMAIN OPEN. UNDER THIS CONDITION, "RIGHT TURN LANE" R3-1100R 24 x 24 (600 x 600) AND M6-2R 21 x 15 (530 x 380) SHALL BE USED.
6. THESE CONTROLS SHALL SUPPLEMENT MAINLINE TRAFFIC CONTROL FOR LANE CLOSURES.
7. THE SIGNS SHALL BE MOUNTED ABOVE THE BARRICADES/DRUMS ON SEPARATE SIGN SUPPORTS THAT MEET NCHRP 350 OR MASH PREQUIREMENTS.
8. TRAFFIC CONTROL AND PROTECTION AT TURN BAYS (TO REMAIN OPEN TO TRAFFIC) SHALL BE INCLUDED IN THE COST OF SPECIFIED TRAFFIC CONTROL STANDARDS OR ITEMS.



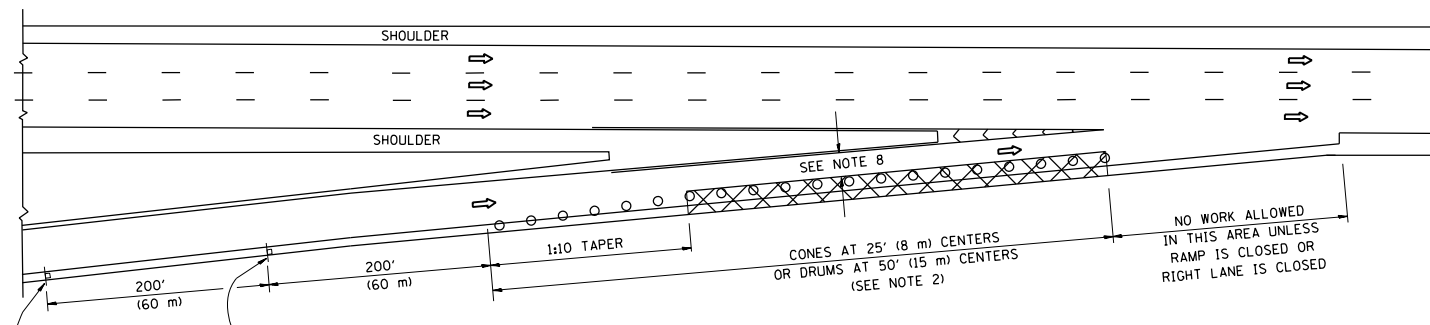
DETAIL A

All dimensions are in inches (millimeters) unless otherwise shown.

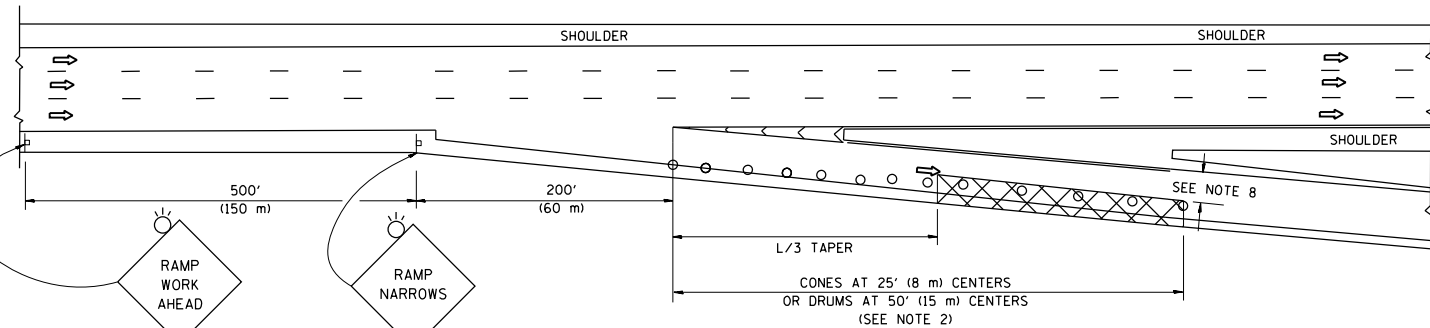
| | | | | | | | | | | |
|--|--------------------------------|---------------------------------|--------------------------------|---|---|---------------------|------------|---------------------------|--------------|---------------------------|
| FILE NAME = | USER NAME = midyja | REVISED - T. RAMMACHER 09-08-94 | REVISED - R. BORO 09-14-09 | STATE OF ILLINOIS DEPARTMENT OF TRANSPORTATION | TRAFFIC CONTROL AND PROTECTION AT TURN BAYS (TO REMAIN OPEN TO TRAFFIC) (MODIFIED) | F.A. RTE. | SECTION | COUNTY | TOTAL SHEETS | SHEET NO. |
| pw:\planroom.dot.illinois.gov\PIDOT\Documents\IDOT Offices\District 1\Projects\Design\REVISED Design\TRAFFIC HOUSEHOLD-07-95 | REVISED - A. SCHUETZE 07-01-13 | REVISED - A. HOUSEH 10-12-96 | REVISED - A. SCHUETZE 09-15-16 | | | VAR. | 2019-067-1 | VARIOUS | 13 | 8 |
| Default | PLOT SCALE = 100.0000' / in. | REVISED - T. RAMMACHER 01-06-00 | REVISED - | | | TC-14 | | CONTRACT NO. 62J56 | | ILLINOIS FED. AID PROJECT |
| | | | | | SCALE: NONE | SHEET 1 OF 1 SHEETS | | STA. TO STA. | | |

PARTIAL RAMP CLOSURE DETAILS

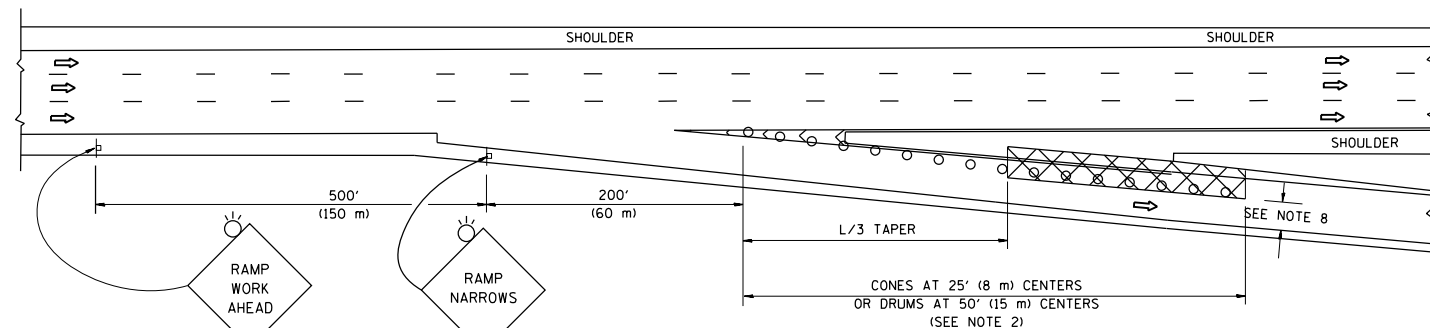
SHOULDER CLOSURE DETAILS



TYPICAL ENTRANCE RAMP



TYPICAL EXIT RAMP



TYPICAL EXIT RAMP

SYMBOLS

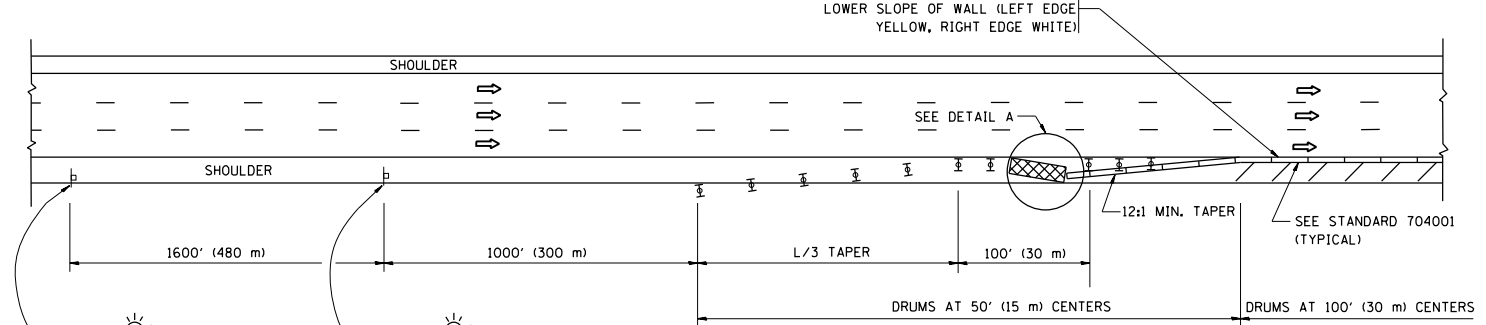
- ACTIVE WORK AREA
- SIGN ON PORTABLE OR PERMANENT SUPPORT
- FLAGGER WITH CONTROL SIGN
- TYPE II BARRICADE OR DRUM
- CONE, DRUM OR BARRICADE
- IMPACT ATTENUATOR OF TYPE AND TEST LEVEL SPECIFIED

GENERAL NOTES

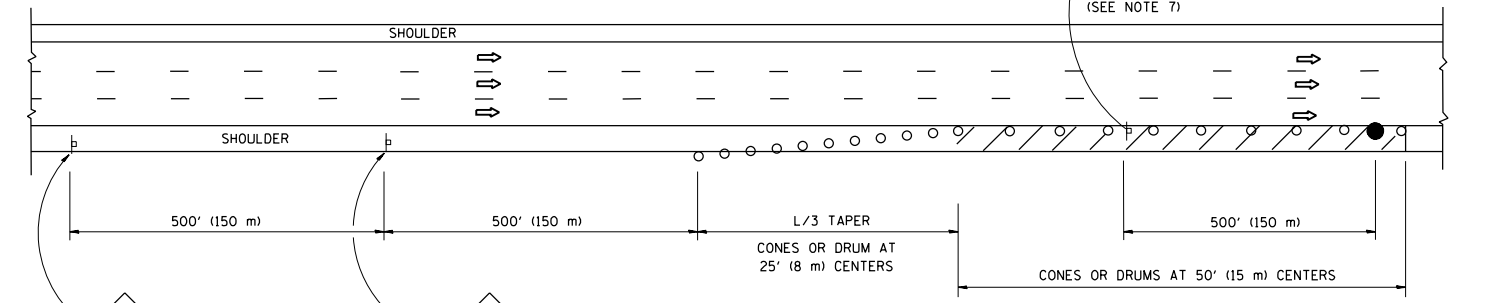
1. THE "L" DISTANCE EQUALS:

| | |
|---------------------------------|---|
| SPEED LIMIT | FORMULAS |
| 45 mph (80 km/h) OR GREATER: | METRIC ENGLISH L=0.65(W)(S) L=(W)(S) |

W = WIDTH OF OFFSET IN FEET (METERS)
S = NORMAL POSTED SPEED MPH (KM/H)
2. PLASTIC DRUMS WITH HIGH PERFORMANCE REFLECTIVE SHEETING ARE REQUIRED FOR ALL NIGHTIME CLOSURES.
3. ALL SIGNS SHALL BE POST MOUNTED IF THE CLOSURE TIME EXCEEDS FOUR DAYS.
4. FLASHING LIGHTS SHALL BE USED DURING THE HOURS OF DARKNESS AND SHALL BE INSTALLED ABOVE THE FIRST TWO SETS OF SIGNS.



PERMANENT SHOULDER CLOSURE



DAYTIME SHOULDER CLOSURE

THIS DETAIL IS USED WHERE:
1. VEHICLES, EQUIPMENT, WORKERS OR THEIR ACTIVITIES ENCR OACH IN AN AREA CLOSER THAN 15' (4.5 m) TO THE EDGE OF PAVEMENT FOR A PERIOD IN EXCESS OF 15 MINUTES.

| | | | |
|---|-------------------------------|--------------|------------------------|
| FILE NAME = | USER NAME = midyja | DESIGNED - | REVISED - S.P.B. 01-07 |
| pw:\planroom.dot\illinois.gov\PIDOT\Documents\IDOT Offices\District 1\Projects\Design\Drawn\Design\Tr 07\No Maint.dgn | | CHECKED - | REVISED - S.P.B. 12-09 |
| Default | PLOT SCALE = 100.0000' / 1in. | DATE - 11-96 | REVISED - M.D. 06-13 |
| | PLOT DATE = 9/13/2019 | | REVISED - M.D. 01-18 |


STATE OF ILLINOIS
DEPARTMENT OF TRANSPORTATION


TRAFFIC CONTROL DETAILS FOR FREEWAY
SHOULDER CLOSURES AND PARTIAL RAMP CLOSURES (MODIFIED)


SCALE: NONE SHEET 1 OF 1 SHEETS STA. TO STA.

| | | | | |
|---------------------------|------------|--------------------|--------------|-----------|
| F.A. RTE. | SECTION | COUNTY | TOTAL SHEETS | SHEET NO. |
| VAR. | 2019-067-1 | VARIOUS | 13 | 9 |
| TC-17 | | CONTRACT NO. 62J56 | | |
| ILLINOIS FED. AID PROJECT | | | | |


ROUTE MARKERS


 FOR U.S. ROUTES
M1-40-2424

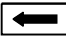
 FOR ILLINOIS ROUTES
M1-50-2424


 R.R., UNMARKED ROUTES
SPECIAL 24" x 18" VARIABLE
4" BLACK LETTERS ON WHITE
REFLECTIVE BACKGROUND

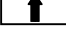
ARROWS SIGNS

 M5-1L-2115

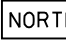
 M5-1R-2115

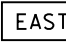
 M6-1-2115

 M6-1-2115


 M6-3-2115

CARDINAL DIRECTION & DETOUR SIGNS

 NORTH M3-1-2412

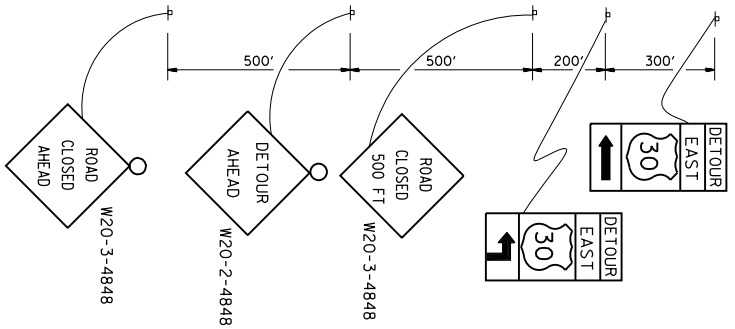
 EAST M3-2-2412

 SOUTH M3-3-2412

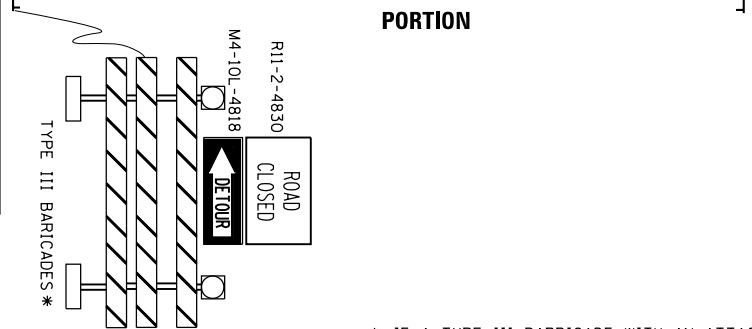
 WEST M3-4-2412

 DETOUR M4-8-2412

STATE ROUTE

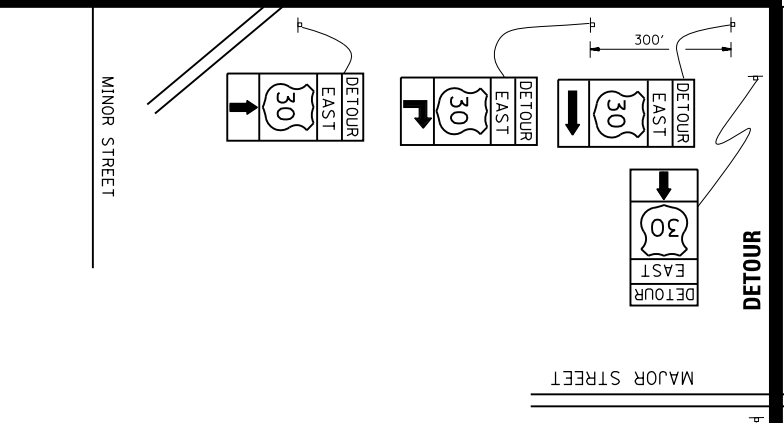


COMPLETELY CLOSED PORTION

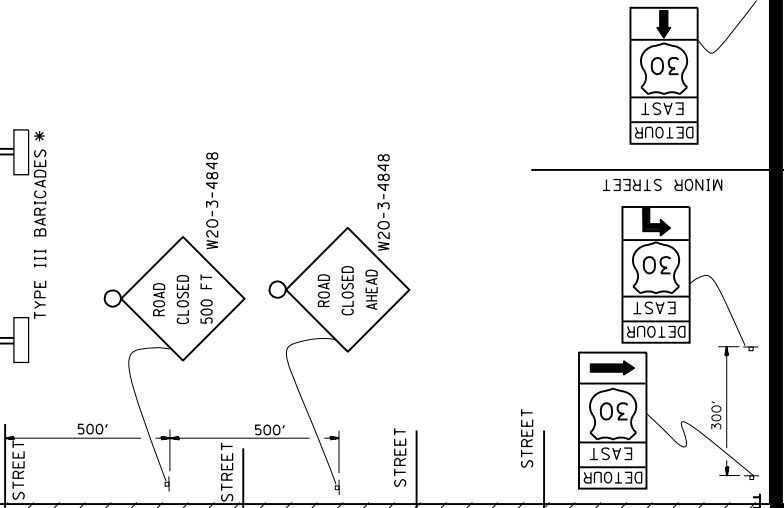
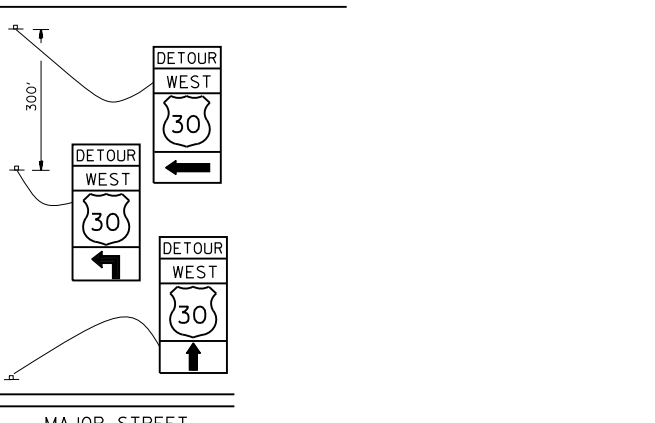


* IF A TYPE III BARRICADE WITH AN ATTACHED SIGN PANEL WHICH MEETS NCHRP 350 REQUIREMENTS IS NOT AVAILABLE, THE SIGNS SHALL BE MOUNTED, ABOVE THE BARRICADES, ON SEPARATE SIGNS SUPPORTS THAT MEET NCHRP 350 REQUIREMENTS.

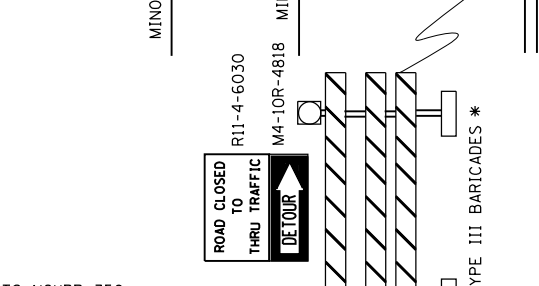
DETOUR



DETOUR



PARTIALLY CLOSED PORTION



STATE ROUTE

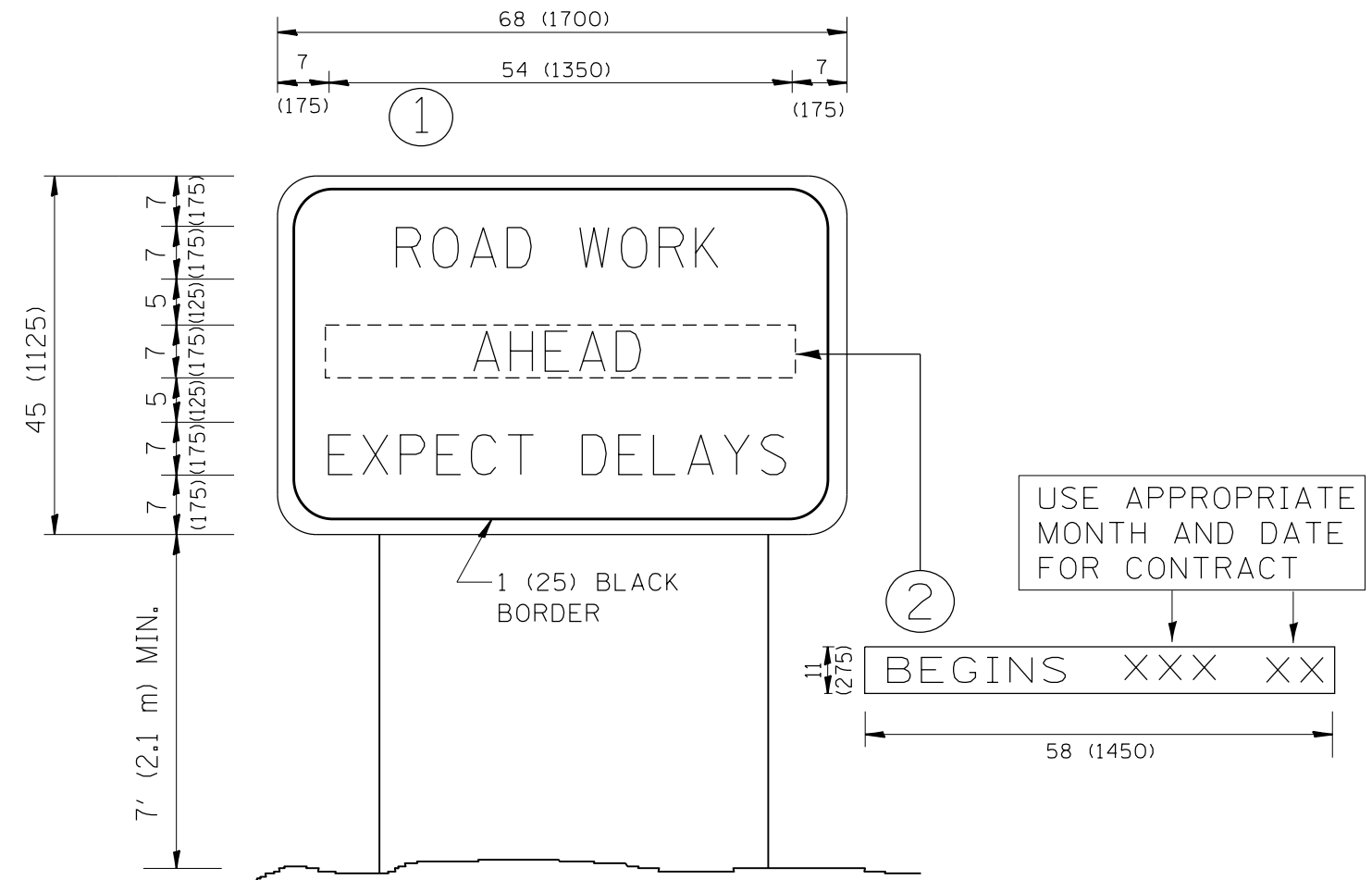


| | | | |
|--|--------------------|------------|----------------------------|
| FILE NAME = | USER NAME = midyja | DESIGNED - | REVISED - 10-18-02 |
| pw:\planroom.dot.illinois.gov\PIDOT\Documents\IDOT Offices\District 1\Projects\Design\Drawn\Design\Traffic_Maint.dgn | | DRAWN - | REVISED - R. BORO 09-14-09 |
| | | CHECKED - | REVISED - |
| | | DATE - | REVISED - |

**STATE OF ILLINOIS
DEPARTMENT OF TRANSPORTATION**

| | | | |
|--|-------------------------|------|---------|
| DETOUR SIGNING FOR CLOSING STATE HIGHWAYS | | | |
| SCALE: NONE | SHEET NO. 1 OF 1 SHEETS | STA. | TO STA. |

| | | | | |
|---|------------|---------------------------|--------------|-----------|
| F.A. RE. | SECTION | COUNTY | TOTAL SHEETS | SHEET NO. |
| VAR. | 2019-067-1 | VARIOUS | 13 | 10 |
| TC-21 | | CONTRACT NO. 62J56 | | |
| FED. ROAD DIST. NO. 1 ILLINOIS FED. AID PROJECT | | | | |



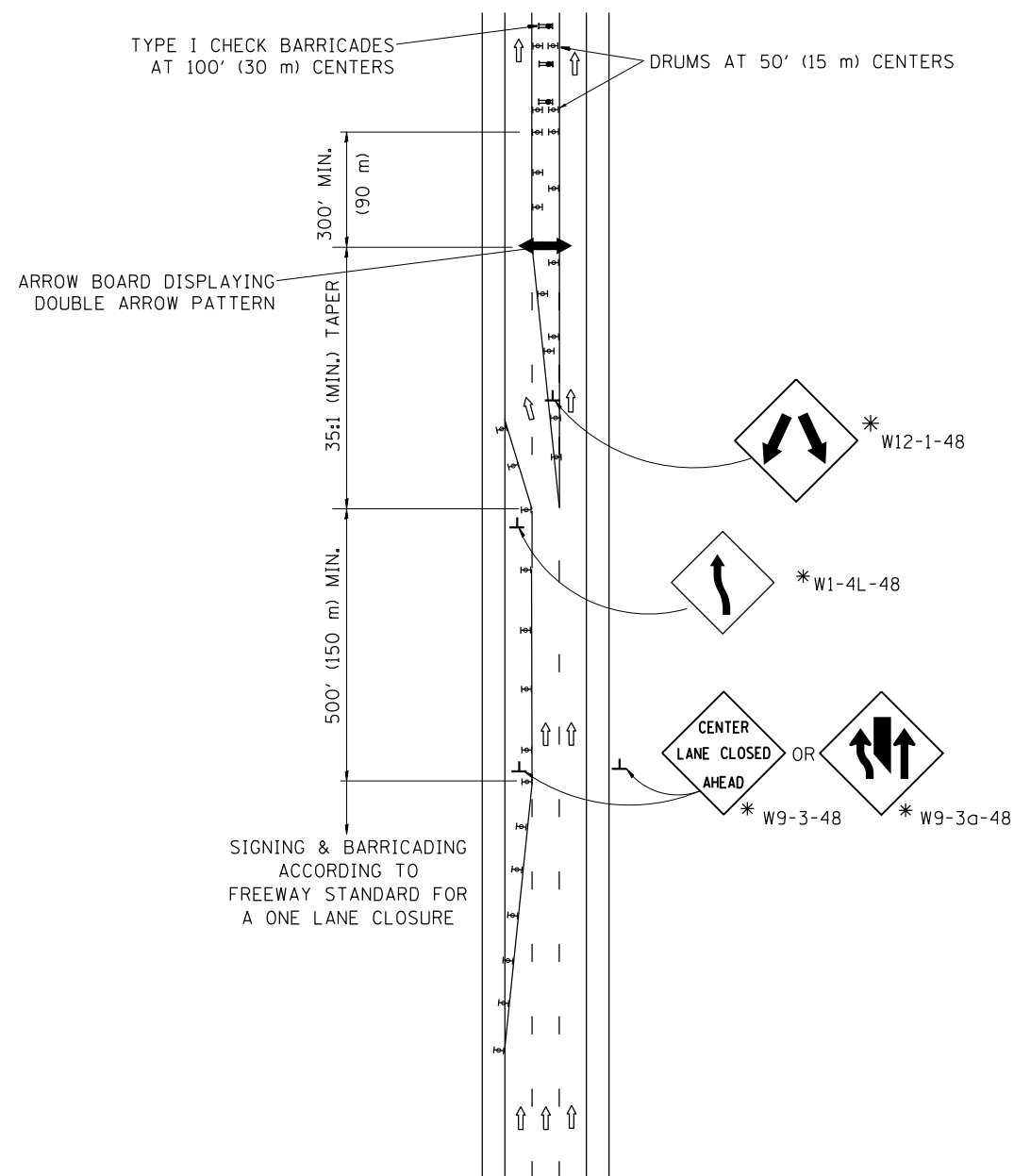
NOTES:

1. USE BLACK LETTERING ON ORANGE BACKGROUND.
2. ERECT SIGNS IN ADVANCE OF THE LOCATION FOR THE "ROAD CONSTRUCTION AHEAD" SIGN AT LOCATIONS AS DIRECTED BY THE ENGINEER.
3. ERECT SIGN ① WITH INSTALLED PANEL ② ONE WEEK PRIOR TO THE START OF CONSTRUCTION.
4. REMOVE PANEL ② SOON AFTER THE START OF CONSTRUCTION.
5. SEE SPECIAL PROVISION FOR "TEMPORARY INFORMATION SIGNING" FOR ADDITIONAL INFORMATION.
6. ONE SIGN ASSEMBLY EQUALS 25.70 SQ. FT. (2.3 SQ. M.)
7. SHALL BE PAID FOR AS TEMPORARY INFORMATION SIGNING.

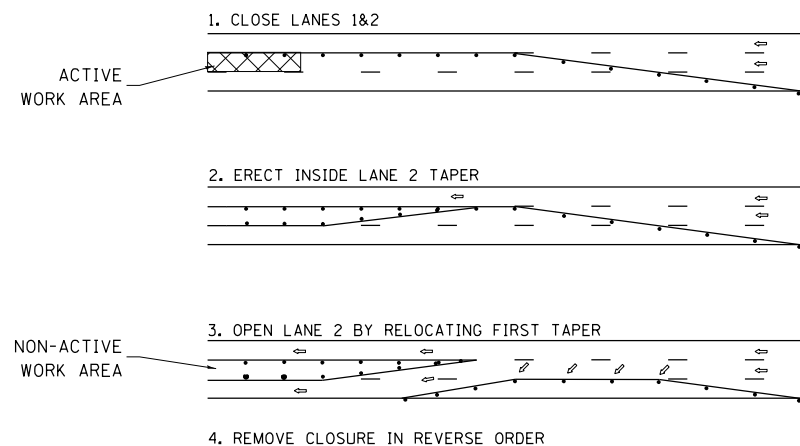
ALL DIMENSIONS ARE IN INCHES (MILLIMETERS) UNLESS OTHERWISE SHOWN.

| | | | | | | | | | | |
|--|--------------------|---------------------------------|----------------------------|---|---|---------------------------|---------|---------|---|-----------|
| FILE NAME = | USER NAME = midyja | DESIGNED - | REVISED - R. MIRS 09-15-97 | STATE OF ILLINOIS DEPARTMENT OF TRANSPORTATION | ARTERIAL ROAD INFORMATION SIGN | F.A. RTE. | SECTION | COUNTY | TOTAL SHEETS | SHEET NO. |
| pw:\planroom.dot.illinois.gov\PIDOT\Documents\IDOT Offices\District 1\Projects\Design\Drawn\Design\Traffic_Maint.dgn | DRAWN | REVISED - R. MIRS 12-11-97 | VAR. | | | 2019-067-1 | VARIOUS | 13 | 11 | |
| PLOT SCALE = 100.0000' / in. | CHECKED - | REVISED - T. RAMMACHER 02-02-99 | TC-22 | | | CONTRACT NO. 62J56 | | | | |
| PLOT DATE = 9/13/2019 | DATE - | REVISED - C. JUCIUS 01-31-07 | SCALE: NONE | | | SHEET NO. 1 OF 1 SHEETS | STA. | TO STA. | FED. ROAD DIST. NO. 1 ILLINOIS FED. AID PROJECT | |

CENTER LANE CLOSURE



INSTALLATION SEQUENCE

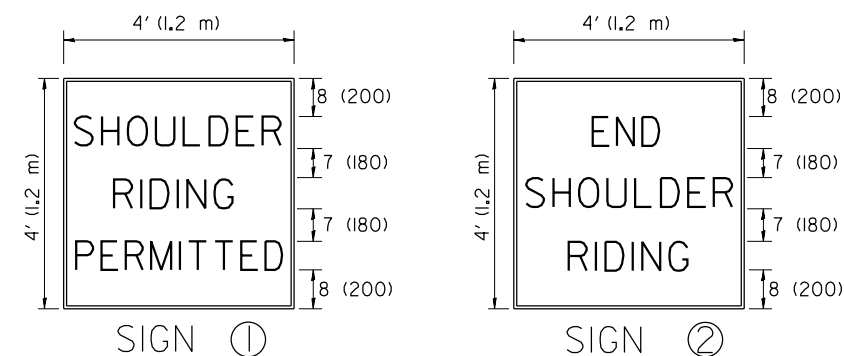
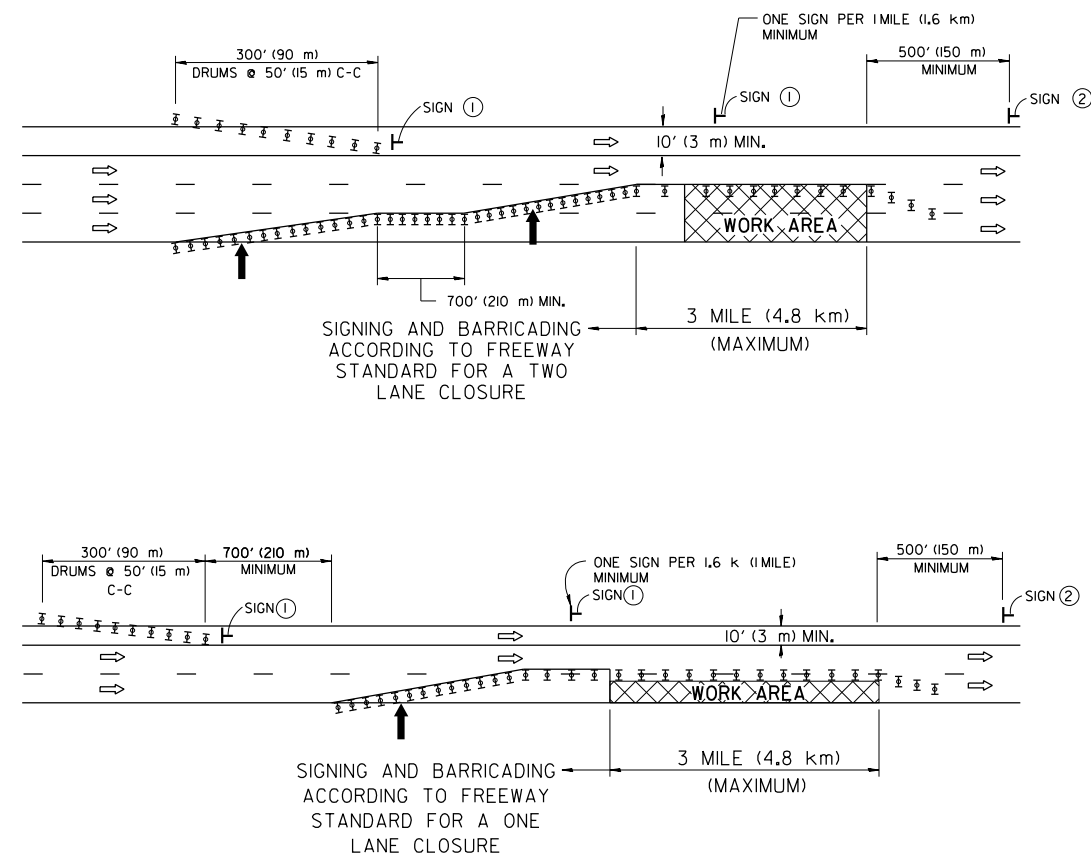


NOTES

1. DRUMS WITH STEADY BURN LIGHTS SHALL BE USED AT 50' (15 m) CENTERS ON ALL TAPERS AND TANGENTS IN ADVANCE OF WORK AREA.
2. CLOSURE SHALL BE USED ONLY FOR OPERATIONS LASTING 72 HOURS OR LESS.
3. CENTER LANE CLOSURE CONFIGURATION IS NOT TO BE USED WITH WORKERS PRESENT.

SHOULDER LANE

NOTE: CLOSURE SHALL BE USED ONLY FOR OPERATIONS LASTING 72 HOURS OR LESS.



6 (150) SERIES "C" LEGEND
BLACK LEGEND
WHITE REFLECT. BACKGROUND
1(25) BORDER

SYMBOLS

- ↑ DIRECTION OF TRAFFIC
- ➔ ARROWBOARD
- ▣ ACTIVE WORK AREA
- ⊥ SIGN ON PORTABLE OR PERMANENT SUPPORT *
- ⊥ TYPE II BARRICADE, OR DRUM WITH MONO-DIRECTIONAL STEADY BURN LIGHT

ALL DIMENSIONS ARE IN INCHES (MILLIMETERS) UNLESS OTHERWISE SHOWN

* ALL SIGNS SHALL BE MOUNTED AT A MINIMUM HEIGHT OF 5' (1.5 m).

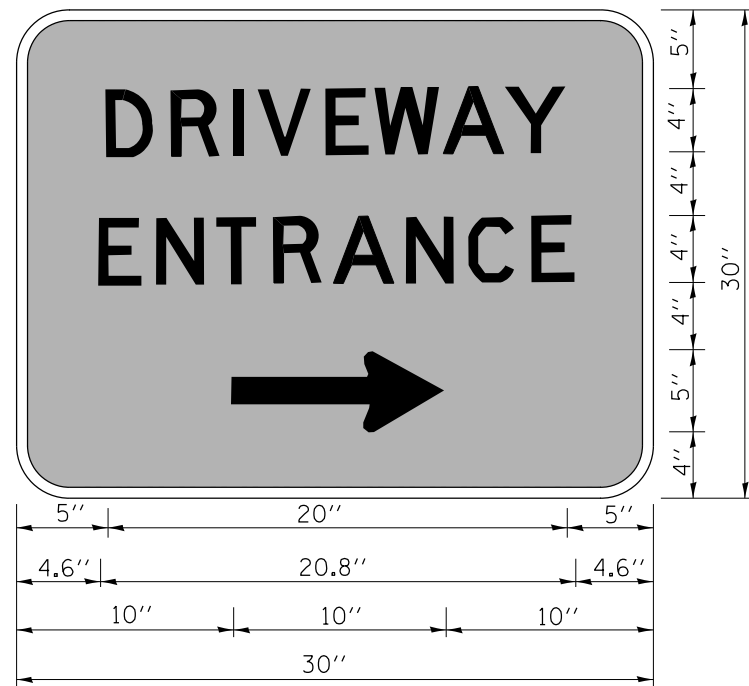
| | | | |
|--|------------------------------|------------|------------------------|
| FILE NAME = | USER NAME = midyja | DESIGNED - | REVISED - J.A.F. 04-03 |
| pw:\planroom.dot.illinois.gov\PIDOT\Documents\IDOT Offices\District 1\Projects\Design\Drawn\Design\Traffic_Maint.dgn | | DRAWN - | REVISED - S.P.B. 01-07 |
| | PLOT SCALE = 100.0000' / in. | CHECKED - | REVISED - S.P.B. 12-09 |
| | PLOT DATE = 9/13/2019 | DATE - | REVISED - |

STATE OF ILLINOIS
DEPARTMENT OF TRANSPORTATION

TRAFFIC CONTROL DETAILS FOR FREEWAY
CENTER LANE CLOSURE SHOULDER LANE

SCALE: NONE SHEET NO. 1 OF 1 SHEETS STA. TO STA.

| | | | | |
|---|------------|--------------------|--------------|-----------|
| F.A. RTE. | SECTION | COUNTY | TOTAL SHEETS | SHEET NO. |
| VAR. | 2019-067-1 | VARIOUS | 13 | 12 |
| TC-25 | | CONTRACT NO. 62J56 | | |
| FED. ROAD DIST. NO. 1 ILLINOIS FED. AID PROJECT | | | | |



3.0" RADIUS, 0.5" BORDER, WHITE ON GREEN; REFLECTORIZED
 "DRIVEWAY" D; "ENTRANCE" D; STANDARD ARROW CUSTOM 12.0" x 5.0"

NOTES:

1. HALF OF THE SIGNS WILL REQUIRE A LEFT HAND FACING ARROW.
2. TWO SIGNS SHALL BE USED AT EACH COMMERCIAL ENTRANCE
 PLACED BACK-TO-BACK; ONE WITH A RIGHT HAND ARROW (SHOWN)
 SHALL BE PLACED ON THE NEAR RIGHT SIDE THE DRIVEWAY
 AND ONE WITH A LEFT HAND ARROW SHALL BE PLACED ON THE
 FAR LEFT SIDE OF THE DRIVEWAY.
3. SIGNS TO BE PAID FOR AS ITEM "TEMPORARY INFORMATION SIGNING".

| | | | |
|--|-------------------------------|------------|------------------------------|
| FILE NAME = | USER NAME = midyja | DESIGNED - | REVISED - C. JUCIUS 02-15-07 |
| p:\planroom.dot.illinois.gov\PWIDOT\Documents\IDOT Offices\District 1\Projects\Design\DRAWN\Design\Traffic_Maint.dgn | | DRAWN | REVISED - |
| | PLOT SCALE = 100.0000' / 1in. | CHECKED - | REVISED - |
| | PLOT DATE = 9/13/2019 | DATE - | REVISED - |

**STATE OF ILLINOIS
 DEPARTMENT OF TRANSPORTATION**

DRIVEWAY ENTRANCE SIGNING

SCALE: NONE SHEET NO. 1 OF 1 SHEETS STA. TO STA.

| F.A. RTE. | SECTION | COUNTY | TOTAL SHEETS | SHEET NO. |
|---|------------|---------|---------------------------|-----------|
| VAR. | 2019-067-1 | VARIOUS | 13 | 13 |
| TC-26 | | | CONTRACT NO. 62J56 | |
| FED. ROAD DIST. NO. 1 ILLINOIS FED. AID PROJECT | | | | |