

STATE OF ILLINOIS
DEPARTMENT OF TRANSPORTATION
DIVISION OF HIGHWAYS

**PROPOSED
HIGHWAY PLANS**

**FAS ROUTE 405 (COUNTY HIGHWAY 1)
SECTION 18-00139-00-RS
PROJECT A1LK(479)
FULL-DEPTH RECLAMATION
WARREN COUNTY**

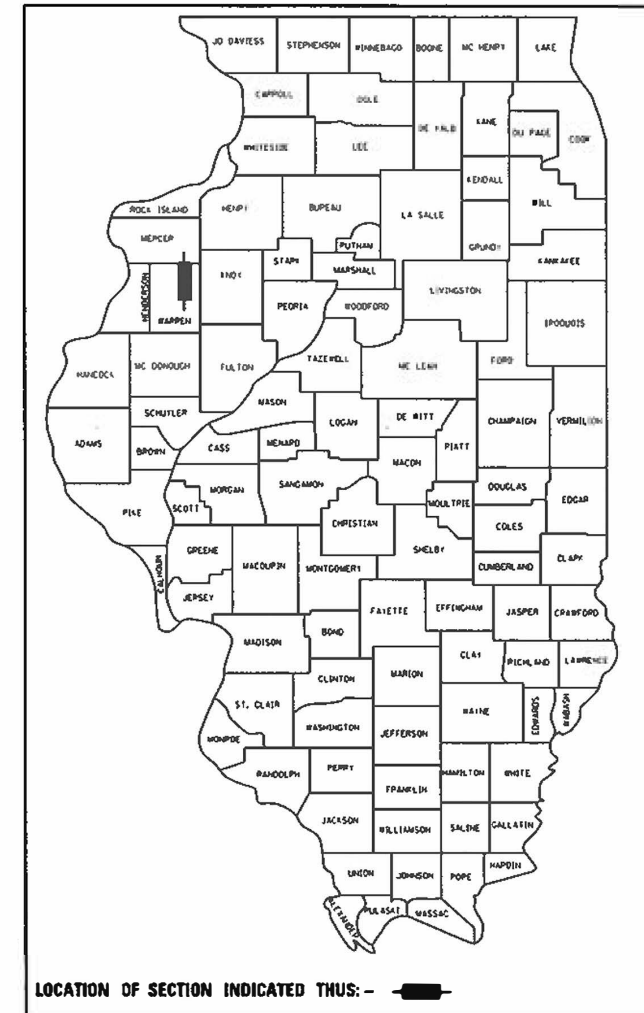
F.A.S. RTE.	SECTION	COUNTY	TOTAL SHEETS	SHEET NO.
405	18-00139-00-RS	WARREN	5	1
		ILLINOIS	CONTRACT NO. 89762	

INDEX OF SHEETS

- 1 COVER SHEET
- 2 GENERAL NOTES & SUMMARY OF QUANTITIES
- 3 TYPICAL SECTIONS
- 4 OVERALL PLAN
- 5 TRAFFIC CONTROL PLAN

LIST OF HIGHWAY STANDARDS

- 701201-05 LANE CLOSURE, 2L, 2W, DAY ONLY, FOR SPEEDS ≥ 45 MPH
- 701306-04 LANE CLOSURE, 2L, 2W, SLOW MOVING OPERATIONS DAY ONLY, FOR SPEEDS ≥ 45 MPH
- 701901-06 TRAFFIC CONTROL DEVICES
- 780001-05 TYPICAL PAVEMENT MARKINGS
- B.L.R. 21-9 TYPICAL APPLICATION OF TRAFFIC CONTROL DEVICES FOR CONSTRUCTION ON RURAL LOCAL HIGHWAYS
- B.L.R. 22-7 TYPICAL APPLICATION OF TRAFFIC CONTROL DEVICES FOR CONSTRUCTION ON RURAL LOCAL HIGHWAYS (TWO-LANE TWO-WAY RURAL TRAFFIC) (ROAD CLOSED TO THRU TRAFFIC)



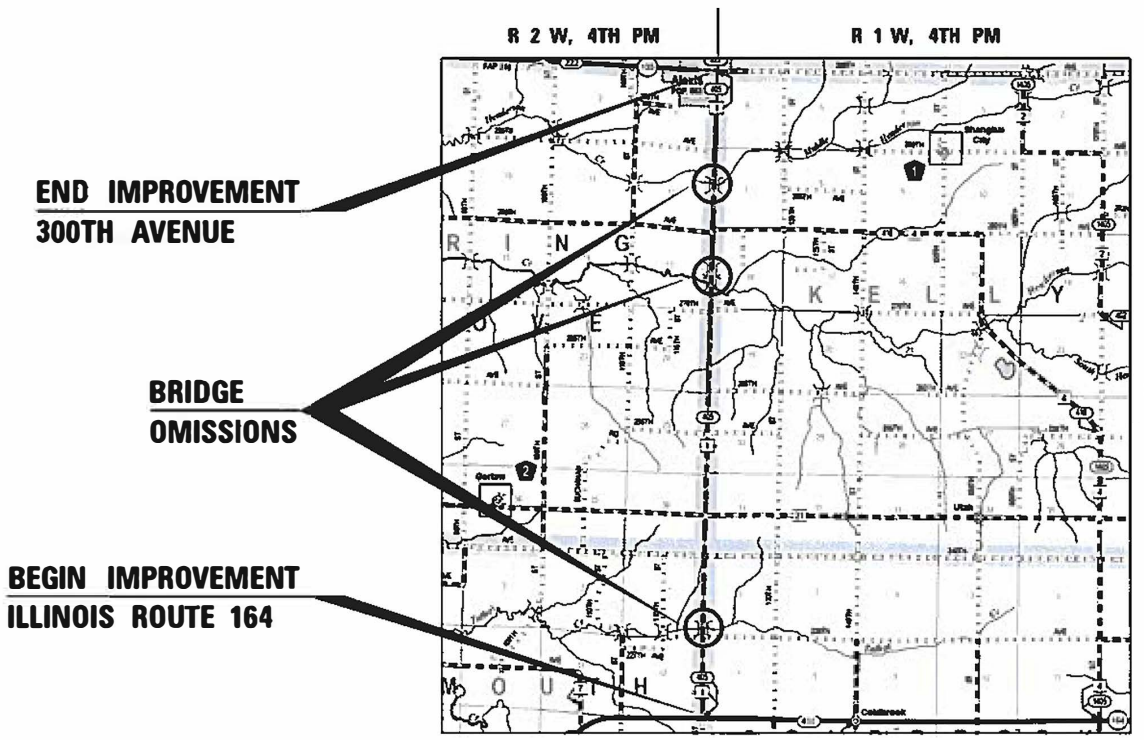
FUNCTIONAL CLASSIFICATION
RURAL MAJOR COLLECTOR
2016 ADT = 1250
DESIGN SPEED = 55 MPH
PV = 88% SU = 7% MU = 5%

APPROVED August 14 2019
LOCAL AGENCY OFFICIAL

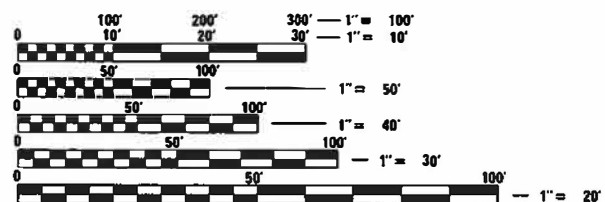
PASSED 08-22 2019
DISTRICT FOUR ENGINEER OF LOCAL ROADS & STREETS

Releasing For Bid Based on Limited Review
8-22 2019
REGION THREE ENGINEER
STATE OF ILLINOIS
DEPARTMENT OF TRANSPORTATION

C-94-032-19



LOCATION MAP NOT TO SCALE



FULL SIZE PLANS HAVE BEEN PREPARED USING STANDARD ENGINEERING SCALES. REDUCED SIZED PLANS WILL NOT CONFORM TO STANDARD SCALES. IN MAKING MEASUREMENTS ON REDUCED PLANS, THE ABOVE SCALES MAY BE USED.

J.U.L.I.E.
JOINT UTILITY LOCATION INFORMATION FOR EXCAVATION
1-800-892-0123
OR 811

GROSS LENGTH = 42,409.75 FT. = 8.032 MILES
NET LENGTH = 41,874.00 FT. = 7.931 MILES

PROJECT MANAGER: SHANE LARSON, P.E.
PROJECT ENGINEER: SHANE LARSON, P.E.
CATALOG 035720-00
CONTRACT NO. 89762

Hutchinson Engineering, Inc.
Jacksonville - Peoria
Quad Cities - Shorewood
Since 1945

2019 JOB #4355

SHANE LARSON
ENGINEER'S SEAL

**PRINTED BY THE AUTHORITY
OF THE STATE OF ILLINOIS**

GENERAL NOTES

ALL REFERENCES TO THE "DEPARTMENT" OR "ENGINEER" IN THE IDOT STANDARD SPECIFICATIONS SHALL ALSO INCLUDE THE WARREN COUNTY ENGINEER.

THE SURFACE PROFILE MILLING QUANTITY AND LOCATIONS WILL BE AT THE DISCRETION OF THE ENGINEER.

PROPERTY OWNER ACCESS REQUIREMENT

ACCESS MUST BE MAINTAINED TO ALL EXISTING PROPERTIES DURING CONSTRUCTION PER ARTICLE 107.09 UNLESS ARRANGEMENTS ARE MADE IN WRITING BY THE CONTRACTOR WITH THE PROPERTY OWNERS WITH A COPY TO THE ENGINEER FOR SHORT-TERM CLOSURES.

ENVIRONMENTAL REVIEWS

PRIOR TO THE USE OF ANY PROPOSED BORROW AREAS, USE AREAS (TEMPORARY ACCESS ROADS, DETOURS, RUN-AROUNDS, ETC.) AND/OR WASTE AREAS, THE CONTRACTOR SHALL FILE THE REQUIRED ENVIRONMENTAL RESOURCE REQUEST SURVEYS ACCORDING TO SECTION 107.22 OF THE STANDARD SPECIFICATIONS. THESE SURVEYS ARE REQUIRED IN ORDER FOR THE DEPARTMENT TO CONDUCT CULTURAL AND BIOLOGICAL RESOURCE SURVEYS FOR THE PROPOSED SITE.

THE REQUIRED ENVIRONMENTAL RESOURCE DOCUMENTATION SHALL INCLUDE THE FOLLOWING:

- BDE FORM 2289 (CULTURAL AND NATURAL RESOURCES REVIEW OF BORROW AREAS)
- BDE FORM 2290 (WASTE/USE AREA REVIEW)
- A LOCATION MAP SHOWING THE SIZE LIMITS AND LOCATION OF THE USE AREA
- COLOR PHOTOGRAPHS DEPICTING THE USE AREA
- BORROW AREA ENTRY AGREEMENT FORM - D4 P10101

PRIOR TO ANY WASTE MATERIALS BEING REMOVED FROM THE CONSTRUCTION SITE THE REQUIRED ENVIRONMENTAL RESOURCE SURVEYS SHALL BE OBTAINED AND FILED BY THE CONTRACTOR. EXCESS WASTE PRODUCTS REMOVED FROM THE CONSTRUCTION SITE SHALL BE DISPOSED OF AS REQUIRED IN SECTION 202.03 OF THE STANDARD SPECIFICATIONS.

ANY PROTRUDING METAL BARS SHALL BE REMOVED PRIOR TO THE DISPOSAL OF BROKEN CONCRETE AT APPROVED DISPOSAL SITES.

PLEASE NOTE THAT A MINIMUM OF FOUR WEEKS SHALL BE ALLOWED FOR THE DISTRICT TO OBTAIN THE REQUIRED ENVIRONMENTAL CLEARANCES AND SIX WEEKS FOR THE REQUIRED BORROW SITE ENVIRONMENTAL CLEARANCES.

SUMMARY OF QUANTITIES					CONSTRUCTION CODE	
SPECIAL PROVISION (SP)	CODE NO.	DESCRIPTION	UNIT	TOTAL QUANTITY	80% FEDERAL 20% LOCAL ROADWAY	
					0005	RURAL
	30201700	PORTLAND CEMENT	TON	425	425	
	40600275	BITUMINOUS MATERIALS (PRIME COAT)	POUND	1174	1174	
	40604050	HOT-MIX ASPHALT SURFACE COURSE, IL-9.5, MIX "C", N50	TON	63	63	
	48102100	AGGREGATE WEDGE SHOULDER, TYPE B	TON	8	8	
	67100100	MOBILIZATION	L SUM	1	1	
	70300100	SHORT TERM PAVEMENT MARKING	FOOT	4188	4188	
	70300150	SHORT TERM PAVEMENT MARKING REMOVAL	SQ FT	1396	1396	
SP	X4401198	HOT-MIX ASPHALT SURFACE REMOVAL, VARIABLE DEPTH	SQ YD	61	61	
SP	X7010216	TRAFFIC CONTROL AND PROTECTION, (SPECIAL)	L SUM	1	1	
SP	LR400005	CIR-FDR EMULSIFIED ASPHALT	GALLON	245000	245000	
SP	LR400880	FULL-DEPTH RECLAMATION, 8.0"	SQ YD	104101	104101	
SP	LR403300	SURFACE PROFILE MILLING	SQ YD	104101	104101	

MODEL Default
Warren_V18135 - CH 1 CIR - PH II (Warren) C:\ICADD\CADD_Sheets\1844355-AH-2-jimencs00.dgn

Hutchison Engineering, Inc.
 Jacksonville - Pearle - Quad Cities - Shorewood
 Since 1945

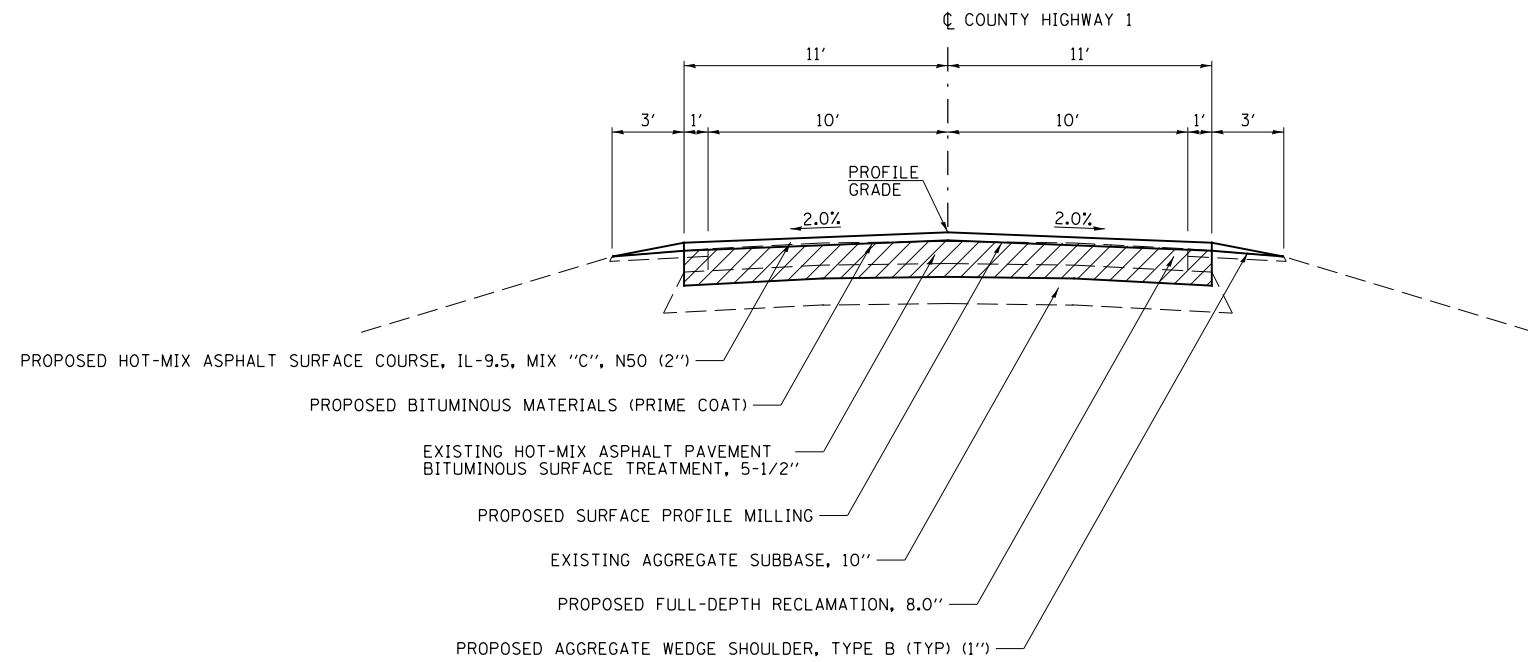
USER NAME = Shughes	DESIGNED - RMB	REVISED -
	DRAWN - SRK	REVISED -
PLOT SCALE = 2,000' / in.	CHECKED - WSL	REVISED -
PLOT DATE = 8/23/2019	DATE - 7-5-18	REVISED -

**WARREN COUNTY
HIGHWAY DEPARTMENT**

**COUNTY HIGHWAY 1
GENERAL NOTES & SUMMARY OF QUANTITIES**

SCALE: N/A SHEET 1 OF 1 SHEETS STA. N/A TO STA. N/A

F.A.S. RTE. 405	SECTION 18-00139-00-R5	COUNTY WARREN	TOTAL SHEETS 5	SHEET NO. 2
CONTRACT NO. 89762				
ILLINOIS FED. AID PROJECT				



COUNTY HIGHWAY 1 TYPICAL SECTION

IL RTE 164 TO 200' NORTH OF IL RTE 164

HOT-MIX ASPHALT MIXTURE REQUIREMENTS

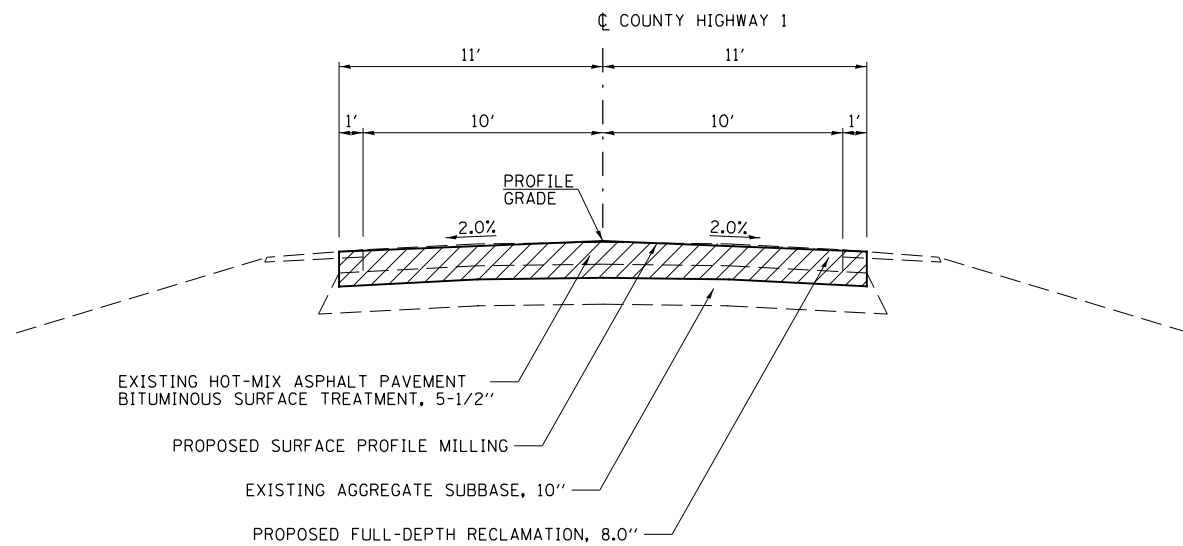
MIXTURE USE(s):	SURFACE COURSE
AC/PG:	PG 64-22
DESIGN AIR VOIDS:	4% @ N50
MIXTURE COMPOSITION: (GRADATION MIXTURE)	IL 9.5
FRICITION AGGREGATE	MIX "C"
QUALITY MANAGEMENT	QC/QA

NOTE:

EXISTING CROSS SLOPE IS VARIABLE.
INSIDE HALF OF EACH LANE AVERAGES 0.64%
OUTSIDE HALF OF EACH LANE AVERAGES 2.58%

SURFACE NOTE

EXISTING HOT-MIX ASPHALT SURFACE IS 20'±.
FINAL SURFACE TO BE 22'.



COUNTY HIGHWAY 1 TYPICAL SECTION

200' NORTH OF IL RTE 164 TO 300TH AVE

MODEL: Default
FILE: Warren_Co\CAD\CADD\CADD_Sheets\044355-HW-3-Typical.dgn
CH-1 CTR - PH II Warren_Co\CAD\CADD\CADD_Sheets\044355-HW-3-Typical.dgn

Hutchison Engineering, Inc.
Jacksonville - Peoria - Quad Cities - Shorewood
Since 1945

USER NAME = Shughes	DESIGNED - RMB	REVISED -
PLOT SCALE = 6,000' / in.	DRAWN - SRK	REVISED -
PLOT DATE = 8/23/2019	CHECKED - WSL	REVISED -
	DATE - 7-3-18	REVISED -

**WARREN COUNTY
HIGHWAY DEPARTMENT**

**COUNTY HIGHWAY 1
TYPICAL SECTIONS**

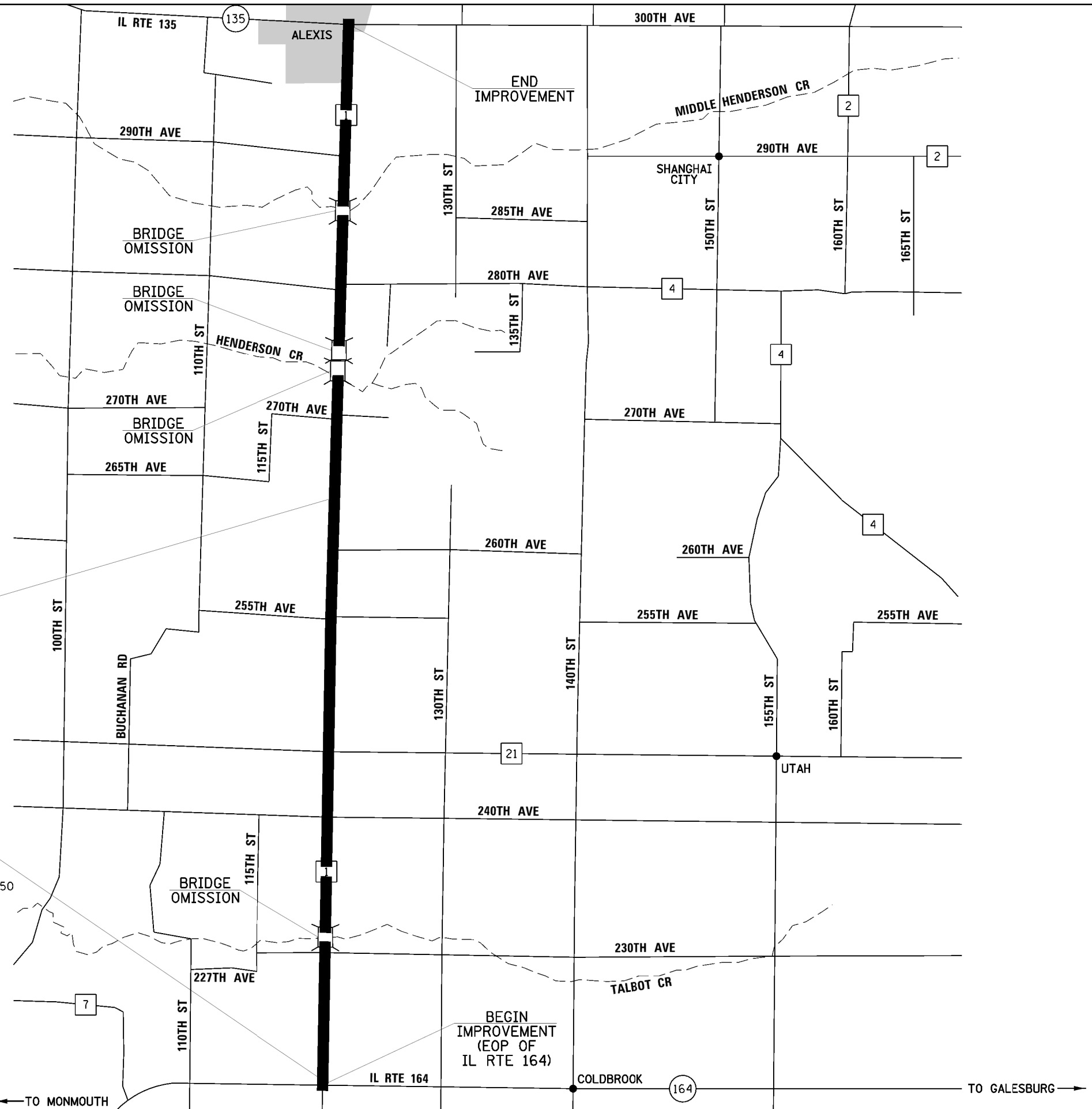
SCALE: N/A SHEET 1 OF 1 SHEETS STA. N/A TO STA. N/A

F.A.S RTE.	SECTION	COUNTY	TOTAL SHEETS	SHEET NO.
405	18-00139-00-R5	WARREN	5	3
CONTRACT NO. 89762			ILLINOIS FED. AID PROJECT	

NOTE:
THE CONTRACTOR SHALL TAKE PRECAUTION
WHEN CONDUCTING FULL-DEPTH RECLAMATION
OPERATIONS OVER EXISTING CROSS-ROAD
CULVERT JUST NORTH OF IL RTE 164.

FULL-DEPTH RECLAMATION LIMITS
IL RTE 164 TO 300TH AVE
PAY ITEMS INCLUDE:
-SHORT TERM PAVEMENT MARKING
-FULL-DEPTH RECLAMATION, 8.0"
-PORTLAND CEMENT
-CIR-FOR EMULSIFIED ASPHALT
-SURFACE PROFILE MILLING
-SHORT TERM PAVEMENT MARKING REMOVAL

HOT-MIX ASPHALT RESURFACING LIMITS
IL RTE 164 TO 200' NORTH OF IL RTE 164
PAY ITEMS INCLUDE:
-HOT-MIX ASPHALT SURFACE COURSE, IL-9.5, MIX "C", N50
-BITUMINOUS MATERIALS (PRIME COAT)
-AGGREGATE WEDGE SHOULDERS, TYPE B
-HOT-MIX ASPHALT SURFACE REMOVAL, VARIABLE DEPTH



MICHEL Defaut
FILE:Warren_V18295- CH-1 EIR - PH II (Warren) CO\CAD\CADD\CADD_Sheets\18-00139-00-R5-ph-4-plm.dgn

Hutchison Engineering, Inc.
Jacksonville • Peoria • Quad Cities • Shorewood
Since 1945

USER NAME = Shughes	DESIGNED - RMB	REVISED -
PLOT SCALE = 2,000' / in.	DRAWN - SRK	REVISED -
PLOT DATE = 8/23/2019	CHECKED - WSL	REVISED -
	DATE - 7-10-18	REVISED -

DESIGNED - RMB	REVISED -
DRAWN - SRK	REVISED -
CHECKED - WSL	REVISED -
DATE - 7-10-18	REVISED -

**WARREN COUNTY
HIGHWAY DEPARTMENT**

**COUNTY HIGHWAY 1
OVERALL PLAN**

SCALE: N/A SHEET 1 OF 1 SHEETS STA. N/A TO STA. N/A

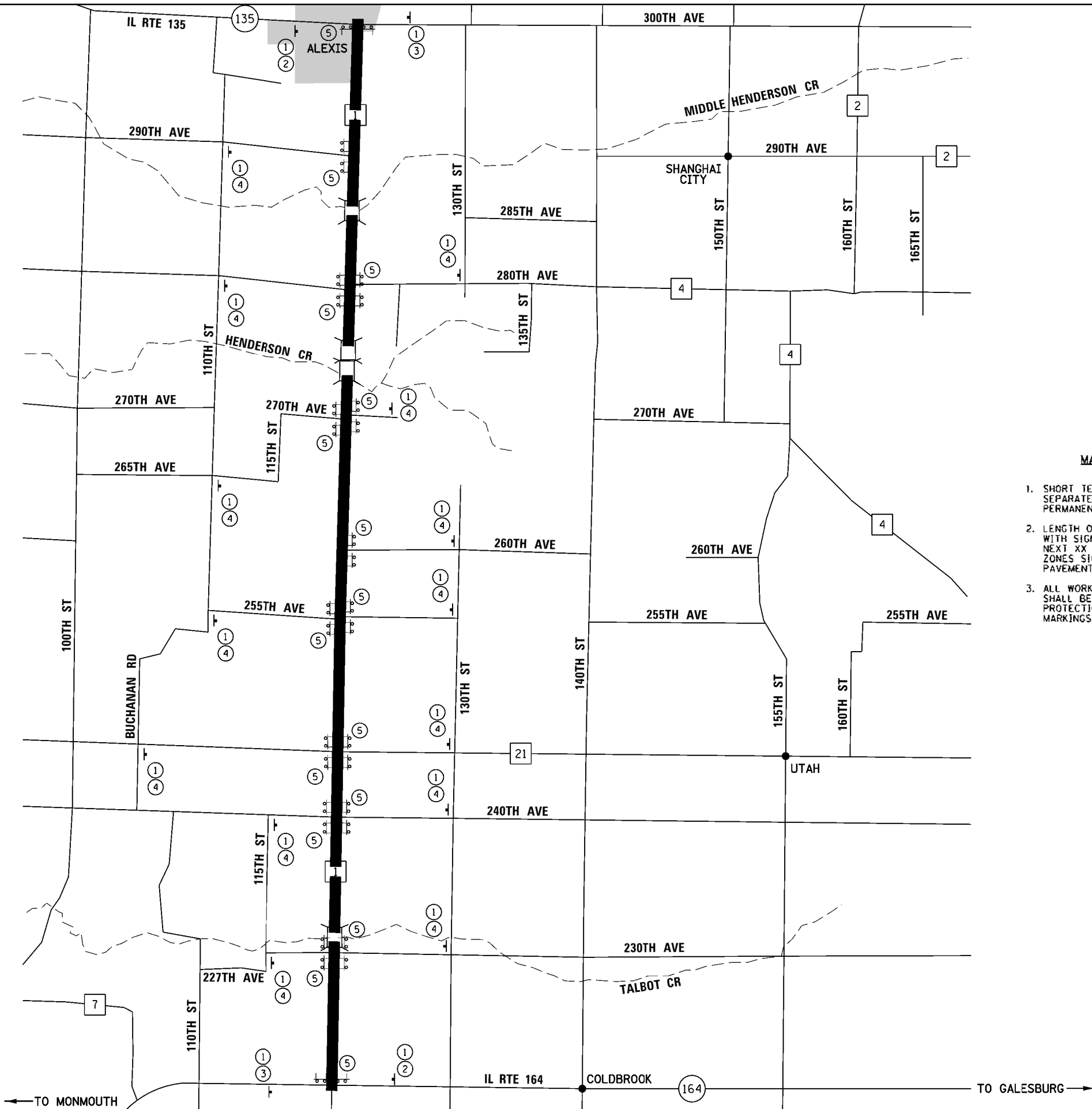
F.A.S. RTE.	SECTION	COUNTY	TOTAL SHEETS	SHEET NO.
405	18-00139-00-R5	WARREN	5	4
CONTRACT NO. 89762			ILLINOIS FED. AID PROJECT	



LEGEND

- ① ROAD CLOSED AHEAD
- ② →
- ③ ←
- ④ ↔
- ⑤ ROAD CLOSED

- ⊥ POST MOUNTED SIGN
- ⊥⊥ TYPE III BARRICADE



MAINTENANCE OF TRAFFIC NOTES:

1. SHORT TERM PAVEMENT MARKINGS SHALL BE USED TO SEPARATE THE TWO DIRECTIONS OF TRAVEL UNTIL PERMANENT MARKINGS ARE PLACED.
2. LENGTH OF PROJECT SHALL BE TEMPORARILY SIGNED WITH SIGN C20-1100 (NO PASSING ZONES NOT STRIPPED NEXT XX MILES PER IL MUTCD), ANY EXISTING PASSING ZONES SIGNS SHALL BE COVERED UNTIL PERMANENT PAVEMENT MARKINGS HAVE BEEN PLACED.
3. ALL WORK ASSOCIATED WITH MAINTENANCE OF TRAFFIC SHALL BE PAID FOR AS TRAFFIC CONTROL AND PROTECTION (SPECIAL) AND SHORT TERM PAVEMENT MARKINGS.

MICHEL Defaut
FILE:Warren_V18355 - CH 1 CIR - PH II Warren_Co\CAD\CADD_Sheets\18-00139-00-R5-sh-5.dwg
7/29/2019 10:54:10 AM

Hutchison Engineering, Inc.
Jacksonville • Peoria • Quad Cities • Shorewood
Since 1945

USER NAME = Shughes	DESIGNED - RMB	REVISED -
PLOT SCALE = 2,000' / in.	DRAWN - SRK	REVISED -
PLOT DATE = 7/29/2019	CHECKED - WSL	REVISED -
	DATE - 7-10-18	REVISED -

DESIGNED - RMB	REVISED -
DRAWN - SRK	REVISED -
CHECKED - WSL	REVISED -
DATE - 7-10-18	REVISED -

DESIGNED - RMB	REVISED -
DRAWN - SRK	REVISED -
CHECKED - WSL	REVISED -
DATE - 7-10-18	REVISED -

**WARREN COUNTY
HIGHWAY DEPARTMENT**

**COUNTY HIGHWAY 1
TRAFFIC CONTROL PLAN**

SCALE: N/A SHEET 1 OF 1 SHEETS STA. N/A TO STA. N/A

F.A.S. RTE.	SECTION	COUNTY	TOTAL SHEETS	SHEET NO.
405	18-00139-00-R5	WARREN	5	5
CONTRACT NO. 89762				
ILLINOIS FED. AID PROJECT				