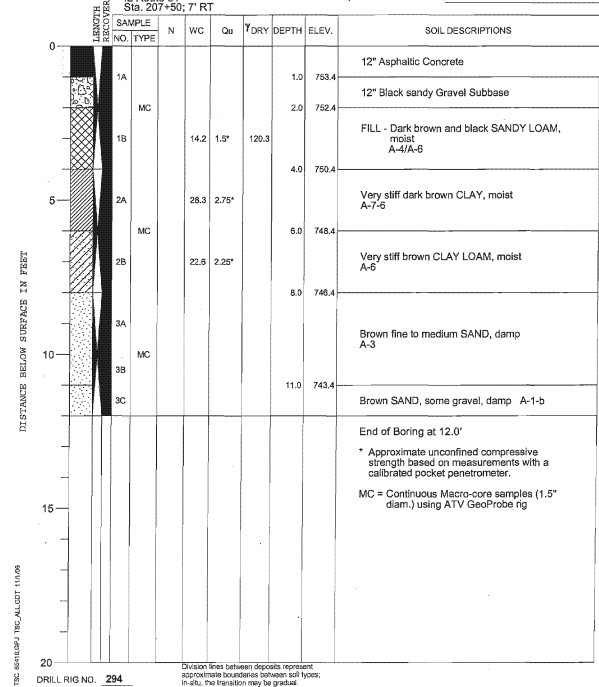
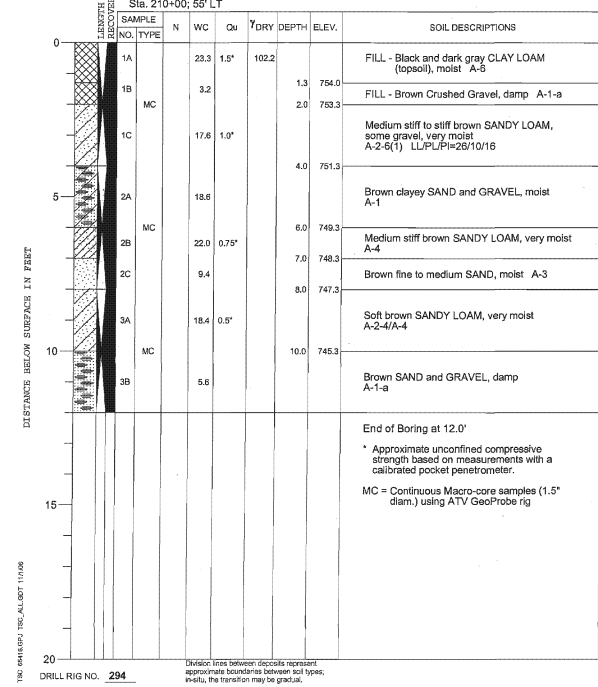


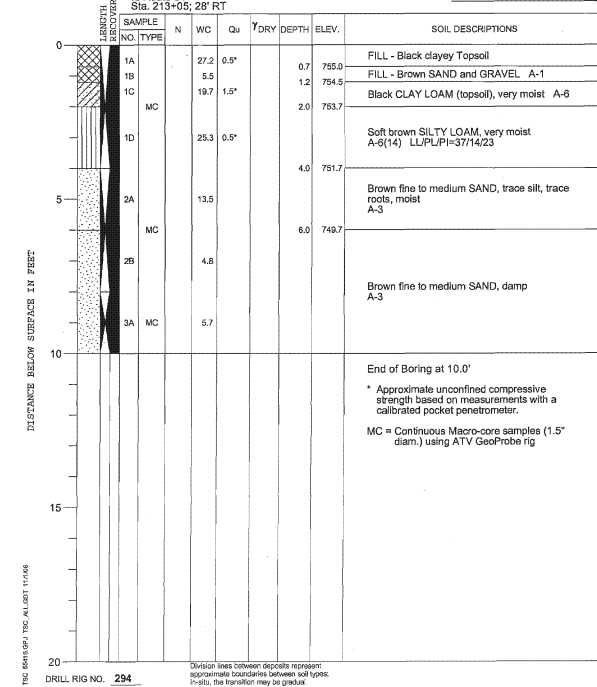
PROJECT IL Rte. 72 at IL Rte. 31, Intersection Improvements, Village of West Dundee
 CLIENT V3 Companies of Illinois Ltd., Elgin, Illinois
 BORING 1 DATE STARTED 5-16-06 DATE COMPLETED 5-16-06 JOB L-65,416
 ELEVATIONS WATER LEVEL OBSERVATIONS
 GROUND SURFACE 754.4 WHILE DRILLING Dry
 END OF BORING 742.4 AT END OF BORING Dry
 24 HOURS



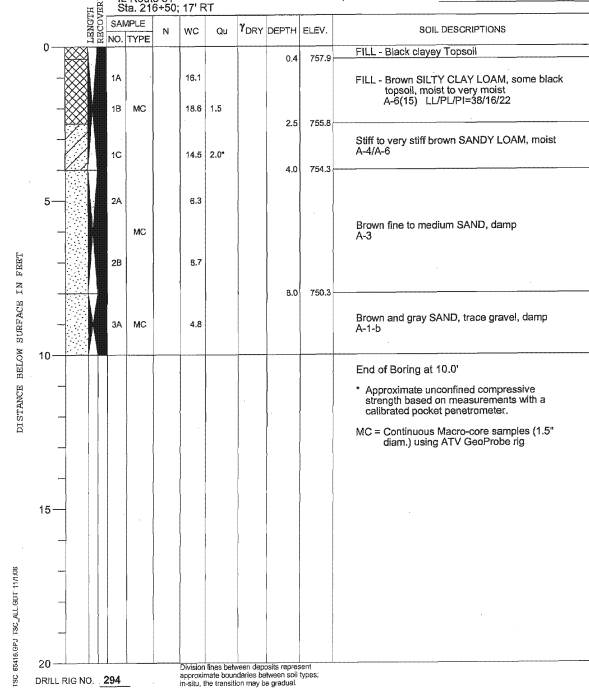
PROJECT IL Rte. 72 at IL Rte. 31, Intersection Improvements, Village of West Dundee
 CLIENT V3 Companies of Illinois Ltd., Elgin, Illinois
 BORING 2 DATE STARTED 5-16-06 DATE COMPLETED 5-16-06 JOB L-65,416
 ELEVATIONS WATER LEVEL OBSERVATIONS
 GROUND SURFACE 755.3 WHILE DRILLING Dry
 END OF BORING 743.3 AT END OF BORING Dry
 24 HOURS



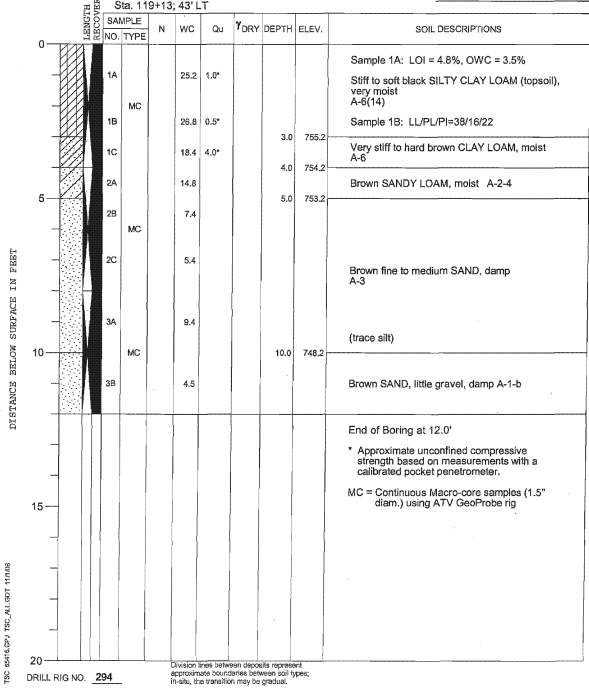
PROJECT IL Rte. 72 at IL Rte. 31, Intersection Improvements, Village of West Dundee
 CLIENT V3 Companies of Illinois Ltd., Elgin, Illinois
 BORING 3 DATE STARTED 5-16-06 DATE COMPLETED 5-16-06 JOB L-65,416
 ELEVATIONS WATER LEVEL OBSERVATIONS
 GROUND SURFACE 755.7 WHILE DRILLING Dry
 END OF BORING 745.7 AT END OF BORING Dry
 24 HOURS



PROJECT IL Rte. 72 at IL Rte. 31, Intersection Improvements, Village of West Dundee
 CLIENT V3 Companies of Illinois Ltd., Elgin, Illinois
 BORING 4 DATE STARTED 5-16-06 DATE COMPLETED 5-16-06 JOB L-65,416
 ELEVATIONS WATER LEVEL OBSERVATIONS
 GROUND SURFACE 758.3 WHILE DRILLING Dry
 END OF BORING 748.3 AT END OF BORING Dry
 24 HOURS



PROJECT IL Rte. 72 at IL Rte. 31, Intersection Improvements, Village of West Dundee
 CLIENT V3 Companies of Illinois Ltd., Elgin, Illinois
 BORING 5 DATE STARTED 5-16-06 DATE COMPLETED 5-16-06 JOB L-65,416
 ELEVATIONS WATER LEVEL OBSERVATIONS
 GROUND SURFACE 758.2 WHILE DRILLING Dry
 END OF BORING 746.2 AT END OF BORING Dry
 24 HOURS



IL Rte. 72 at IL Rte. 31 Improvements
 V3 Companies of Illinois, Ltd.
 TSC Project No. L-65,416

PAVEMENT CORE RESULTS
 (Each component of pavement section listed from top down.)

IL Rte. 31

CORE 3 Sta. 218+50, 3' LT (Northbound left lane)

2.0" Surface Course (Apparent slag mix)
 1.2" Surface Course
 3.0" Surface Course
 2.8" Surface Course
 3.2" Binder Course
 2.0" Surface Course
14.0" Total Asphalt Thickness

7.2" P.C. Concrete Base Course (Good condition, no steel mesh observed)
 No granular subbase encountered
 ~21.2" depth - Subgrade

IL Rte. 72

CORE 4 Sta. 118+50, 3' RT (Eastbound left lane)

1.3" Surface Course
 2.0" Binder Course
 1.8" Surface Course
5.1" Total Asphalt Thickness

7.1" P.C. Concrete Base Course (Partially deteriorated, 3/16" steel mesh 5" below top)
 5.0" Gravel Subbase (well-graded, some sand)
 ~17" depth - Subgrade

IL Rte. 72 at IL Rte. 31 Improvements
 V3 Companies of Illinois, Ltd.
 TSC Project No. L-65,416

PAVEMENT CORE RESULTS
 (Each component of pavement section listed from top down.)

IL Rte. 31

CORE 1 Sta. 206+00, 7' RT (Northbound right lane)

1.5" Surface Course (Apparent slag mix)
 1.1" Surface Course
 1.4" Surface Course
 1.5" Binder Course
 0.9" Surface Course
 1.7" Surface Course
 1.6" Surface Course
9.7" Total Asphalt Thickness

9.0" P.C. Concrete Base Course (Good condition, no steel mesh observed)
 3.5" Gravel Subbase (well-graded, some sand)
 ~22" depth - Subgrade

CORE 2 Sta. 214+50, 46' LT (Southbound right lane)

1.6" Surface Course (Apparent slag mix)
 1.3" Surface Course
 4.5" Binder Course
 2.2" Binder Course
 3.6" Binder Course
13.2" Total Asphalt Thickness

5.0" Clayey Gravel & Sand Subbase
 ~18" depth - Subgrade



USER NAME = \$USER\$	DESIGNED <i>ESI</i>	REVISED -
PLOT SCALE = \$SCALE\$	DRAWN <i>ESI</i>	REVISED -
PLOT DATE = \$DATE\$	CHECKED <i>GJS</i>	REVISED -
	DATE <i>07/03/12</i>	REVISED -

STATE OF ILLINOIS
 DEPARTMENT OF TRANSPORTATION

SOIL BORING LOGS & PAVEMENT CORES

SCALE: 1" = 20'

SHEET NO. 1 OF 1 SHEETS STA. TO STA.

F.A.U. RTE.	SECTION	COUNTY	TOTAL SHEETS	SHEET NO.
3887	S-N	KANE	153	55
CONTRACT NO. 60A95				
FED. ROAD DIST. NO. 1 ILLINOIS FED. AID PROJECT				