
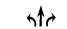


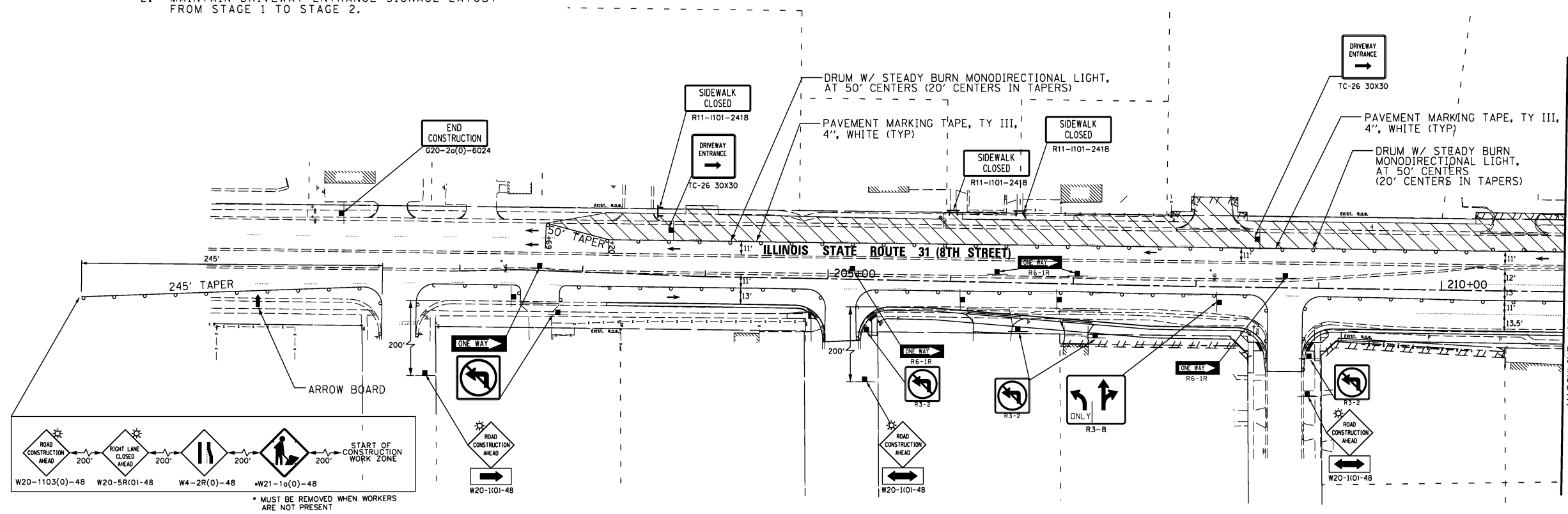
**STAGE 1 & STAGE 2**

**LEGEND**

**NOTES:**

-  WORK ZONE
-  DIRECTION(S) OF TRAVEL
- 1. SEE DRIVEWAY ACCESS DETAIL ON MOT GENERAL NOTES FOR ALL DRIVEWAYS ALONG THE PROJECT WORK LIMITS. EACH DETAIL PROVIDED INDICATES THE APPLICABLE STAGE 1 AND STAGE 2 LAYOUT.
- 2. MAINTAIN DRIVEWAY ENTRANCE SIGNAGE LAYOUT FROM STAGE 1 TO STAGE 2.

**STAGE 1 - IL 31**



**STAGE 2 - IL 31**



USER NAME = #USER#	DESIGNED <i>ESI</i>	REVISED -
DRAWN <i>ESI</i>	REVISED -	
CHECKED <i>GJS</i>	REVISED -	
DATE <i>07/03/12</i>	REVISED -	

**STATE OF ILLINOIS  
DEPARTMENT OF TRANSPORTATION**

SUGGESTED MAINTENANCE OF TRAFFIC	
IL 31: STAGES 1 & 2	
SCALE: 1" = 50'	SHEET NO. 3 OF 7 SHEETS
STA.	TO STA.

F.A.U. RTE.	SECTION	COUNTY	TOTAL SHEETS	SHEET NO.
3887	S-N	KANE	153	58
CONTRACT NO. 60A95				
FED. ROAD DIST. NO. 1 ILLINOIS FED. AID PROJECT				