

DATE	
BY	
PLAN	SURVEYED
	PLOTTED
	ALIGNED
	CHECKED
	FILED
NOTE BOOK NO.	
CADD FILE NAME	

DATE	
BY	
PROFILE	SURVEYED
	PLOTTED
	GRADES CHECKED
	STRUCTURE NOTATIONS CHECKED
NOTE BOOK NO.	
STRUCTURE NOTATIONS CHECKED	

ST-53
STA: 215+39.96; 22.0 RT
5' CB TY A
W/TY 24 F&G
RIM 756.48
IE 750.45 (36" S)

ST-57
STA: 215+37.41; 48.0 LT
4' CB TY A
W/TY 24 F&G
RIM 756.11
IE 752.00 (12" W)

ST-59
STA: 216+05.20; 47.8 RT
EXISTING STRUCTURE
RIM 756.88
MATCH EXISTING INVERT (SW)

ST-61
STA: 217+00; 0.0 RT
2' IN TY A
W/TY 11 F&G
RIM 758.45
IE 755.15 (15" SW)

ST-62
STA: 216+88.91; 53.1 LT
5' MH TY A
W/TY 1 F, CL
RIM 757.04
IE 751.30 (36" N,S)
IE 754.07 (15" E)

FH-4 (BY OTHERS)
STA 216+32.22, 41.6 RT
EXIST. GRADE 757.47
FINISHED GRADE 757.54

P-52
64 LF - 36" RCP
TYPE 2 @ 0.30%

P-58
12 LF - 8" PVC
MATCH EXIST. SLOPE

P-62
32 LF - 15 RCP
TYPE 2 @ 1.84%

ST-56
STA: 215+37.49; 53.2 LT
5' MH TY A
W/TY 1 F, CL
RIM 756.46
IE 750.63 (36" N,S)
IE 751.92 (12" E)

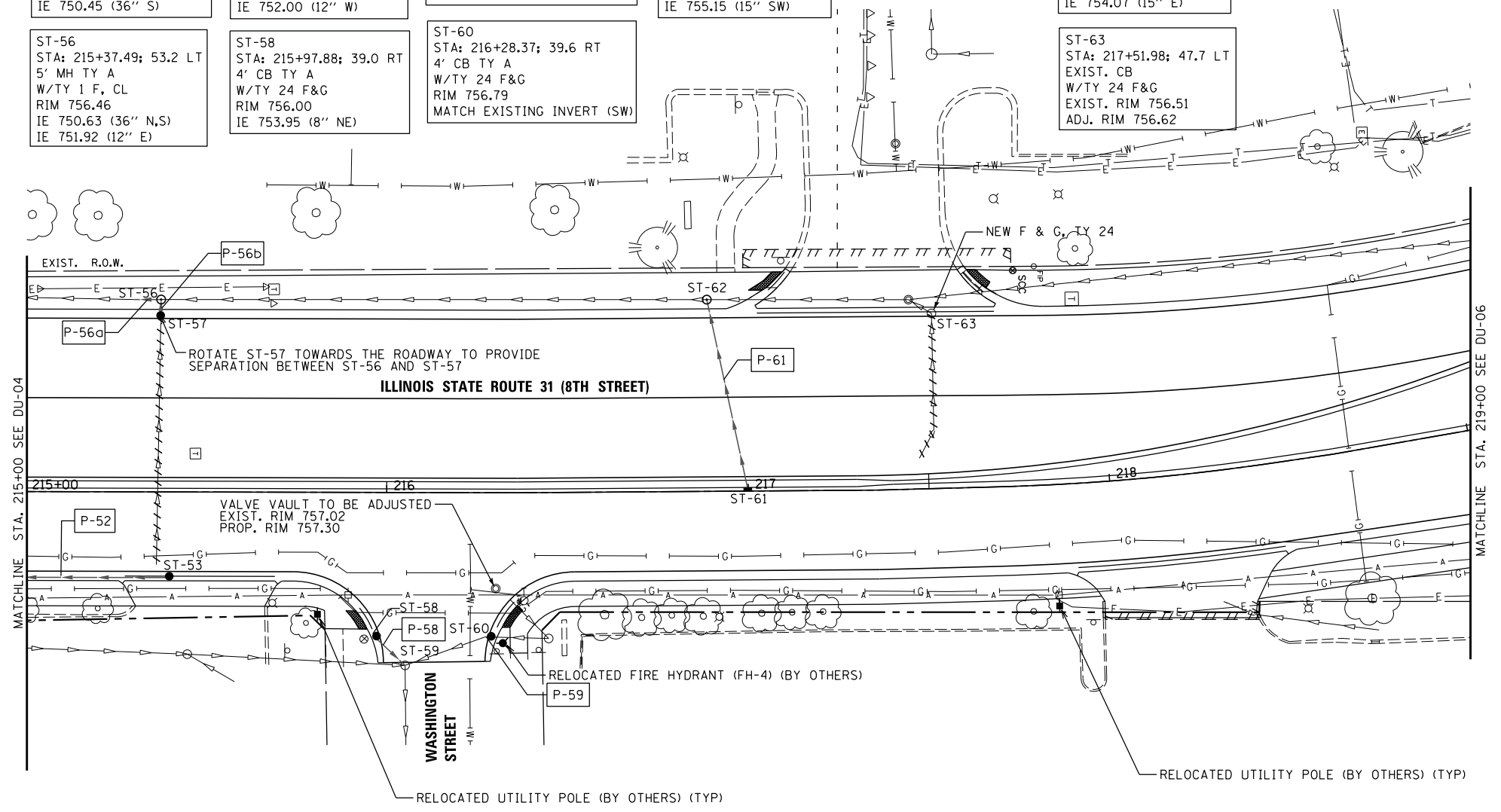
ST-58
STA: 215+97.88; 39.0 RT
4' CB TY A
W/TY 24 F&G
RIM 756.00
IE 753.95 (8" NE)

ST-60
STA: 216+28.37; 39.6 RT
4' CB TY A
W/TY 24 F&G
RIM 756.79
MATCH EXISTING INVERT (SW)

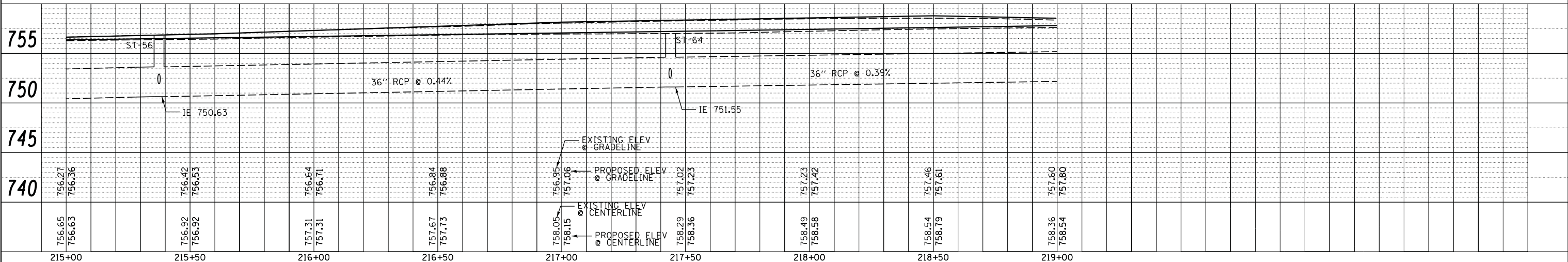
ST-63
STA: 217+51.98; 47.7 LT
EXIST. CB
W/TY 24 F&G
EXIST. RIM 756.51
ADJ. RIM 756.62

P-56a
8 LF - 36" RCP
TYPE 2 @ 0.44%

P-63
7 LF - 15" RCP
TYPE 2 @ 1.00%



- NOTES:
- FOR STRUCTURES LOCATED WITHIN THE CURB, OFFSETS AND RIM ELEVATIONS ARE GIVEN AT THE EDGE OF PAVEMENT.
 - LOCATION OF EXISTING GAS LINE AND ELECTRICAL LINE IS APPROXIMATE AND THE DEPTH IS UNKNOWN. LOCATE UNDERGROUND LINES BEFORE STORM SEWER CONSTRUCTION AND NOTIFY ENGINEER IF THERE IS A CONFLICT.
 - IN CASES WHERE WATERMAIN LINE INFORMATION WAS NOT AVAILABLE, THE SLOPE FOR THE TOP OF PIPE ELEVATION IS ASSUMED AT 0% AND CROSSING INFORMATION IS NOTED AS '(EST.)'. CONTRACTOR SHALL LOCATE POTENTIAL CONFLICTS AND NOTIFY THE ENGINEER PRIOR TO INSTALLING STORM SEWER LINES.
 - IN CASES WHERE SANITARY SEWER INVERT ELEVATIONS WERE NOT AVAILABLE, CONTRACTOR SHALL LOCATE POTENTIAL CONFLICTS AND NOTIFY THE ENGINEER PRIOR TO INSTALLING STORM SEWER LINES.
 - SEE THE STREET LIGHTING PLAN SHEETS FOR LIGHT POLE REMOVAL AND RELOCATION.
 - SEE TRAFFIC SIGNAL PLAN SHEETS FOR REMOVALS RELATED TO TRAFFIC SIGNAL EQUIPMENT.



USER NAME = *USER*
DESIGNED *ESI*
CHECKED *GJS*
PLOT SCALE = *SCALE*
DRAWN *ESI*
PLOT DATE = *DATE*
CHECKED *07/03/12*

REVISED - *08/01/12*
REVISED - *08/29/12*
REVISED -
REVISED -

STATE OF ILLINOIS
DEPARTMENT OF TRANSPORTATION

PROPOSED DRAINAGE AND UTILITY PLAN
SCALE: 1" = 20'
SHEET NO. 5 OF 6 SHEETS
STA. 215+00 TO STA. 219+00

F.A.U. RTE.	SECTION	COUNTY	TOTAL SHEETS	SHEET NO.
3887	S-N	KANE	153	83
CONTRACT NO. 60A95				
FED. ROAD DIST. NO. 1 ILLINOIS FED. AID PROJECT				