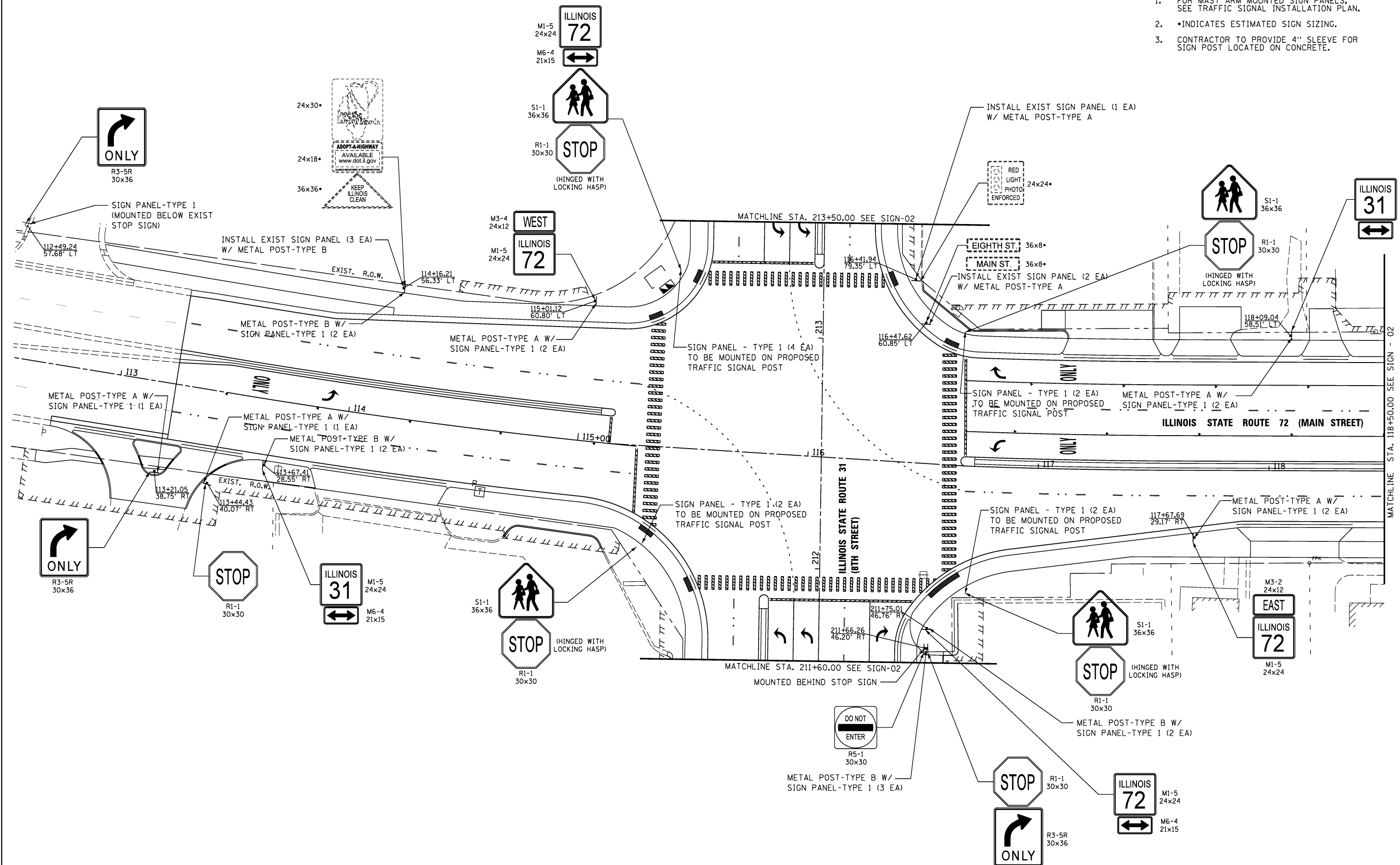
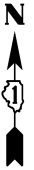


NOTES:

1. FOR MAST ARM MOUNTED SIGN PANELS, SEE TRAFFIC SIGNAL INSTALLATION PLAN.
2. *INDICATES ESTIMATED SIGN SIZING.
3. CONTRACTOR TO PROVIDE 4" SLEEVE FOR SIGN POST LOCATED ON CONCRETE.



USER NAME = #USER#	DESIGNED <i>ESI</i>	REVISED -
DRAWN <i>ESI</i>	REVISED -	
PLOT SCALE = #SCALE#	CHECKED <i>GJS</i>	REVISED -
PLOT DATE = #DATE#	DATE <i>07/03/12</i>	REVISED -

STATE OF ILLINOIS
DEPARTMENT OF TRANSPORTATION

SIGNING PLAN

SCALE: 1" = 20' SHEET NO. 1 OF 6 SHEETS STA. 113+50 TO STA. 118+50

F.A.U. RTE.	SECTION	COUNTY	TOTAL SHEETS	SHEET NO.
3887	S-N	KANE	153	96
CONTRACT NO. 60A95				
FED. ROAD DIST. NO. 1 ILLINOIS FED. AID PROJECT				