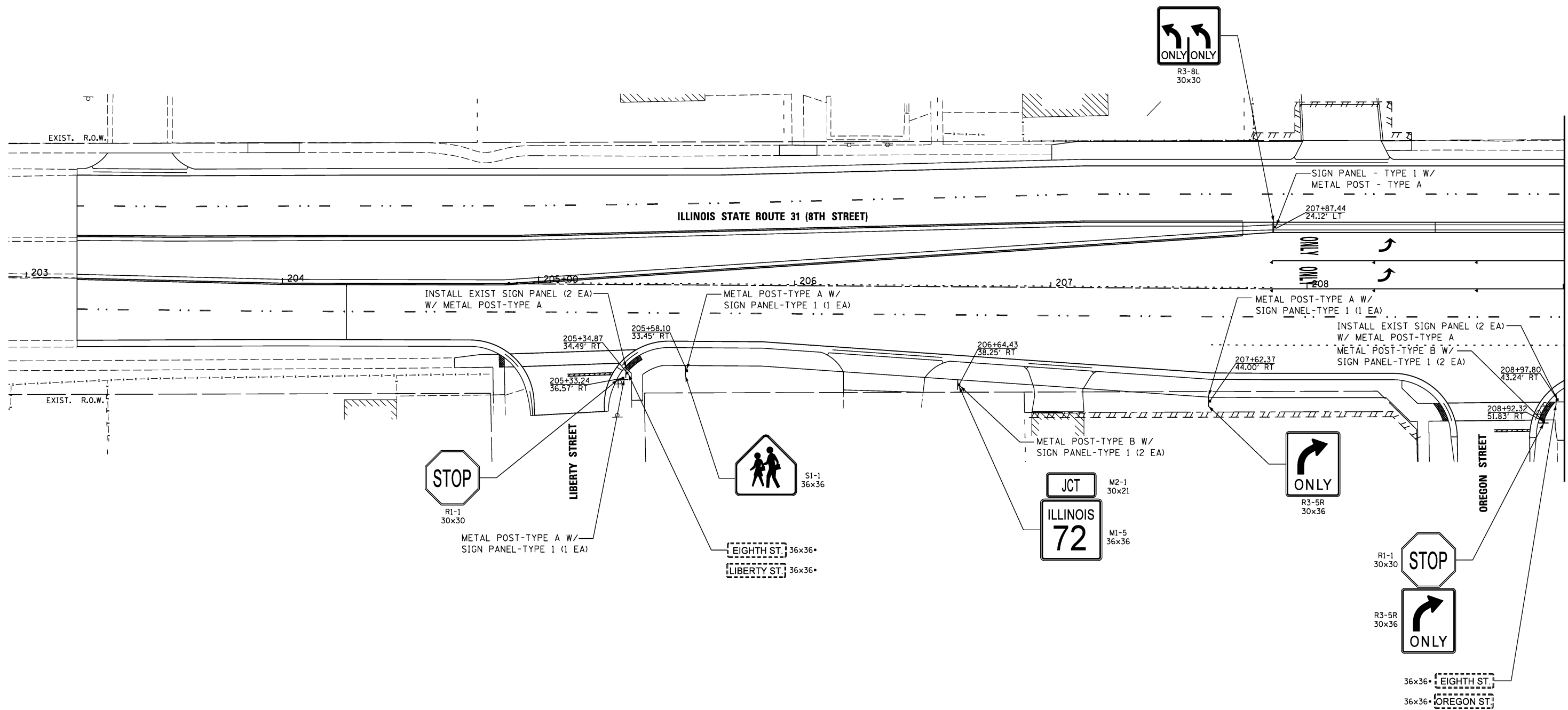


NOTES:

- FOR MAST ARM MOUNTED SIGN PANELS, SEE TRAFFIC SIGNAL INSTALLATION PLAN.
- INDICATES ESTIMATED SIGN SIZING.
- CONTRACTOR TO PROVIDE 4" SLEEVE FOR SIGN POST LOCATED ON CONCRETE.



USER NAME = #USER#	DESIGNED <i>ESI</i>	REVISED -
DRAWN <i>ESI</i>	CHECKED <i>GJS</i>	REVISED -
PLOT SCALE = #SCALE#	DATE <i>07/03/12</i>	REVISED -
PLOT DATE = #DATE#		

STATE OF ILLINOIS
DEPARTMENT OF TRANSPORTATION

SIGNING PLAN	
SCALE: 1" = 20'	SHEET NO. 3 OF 6 SHEETS
STA. 203+00	TO STA. 209+00

F.A.U. RTE.	SECTION	COUNTY	TOTAL SHEETS	SHEET NO.
3887	S-N	KANE	153	98
CONTRACT NO. 60A95				
FED. ROAD DIST. NO. 1 ILLINOIS FED. AID PROJECT				