



LEGEND

- ⊕ EXISTING 120V 20A WEATHERPROOF GFI DUPLEX RECEPTACLE (FESTOON OUTLET)
- GFI GROUND FAULT INTERRUPTING
- ⊗ EXISTING 150 WATT LUMINAIRE
- ELECTRIC CABLE IN CONDUIT 3 #4 AWG AND 1 #4 GROUND UNLESS OTHERWISE NOTED
- ⊠ EXISTING LIGHT CONTROLLER
- B BLACK WIRE
- W NEUTRAL (WHITE) WIRE
- R RED WIRE
- G GREEN WIRE
- ⊞ 2-POLE FUSE HOLDER WITH 2-10 AMP FUSES FOR LUMINAIRE
- ⊞ FUSE HOLDER WITH 15 AMP FUSE FOR FESTOON OUTLET
- ⊥ GROUND ROD

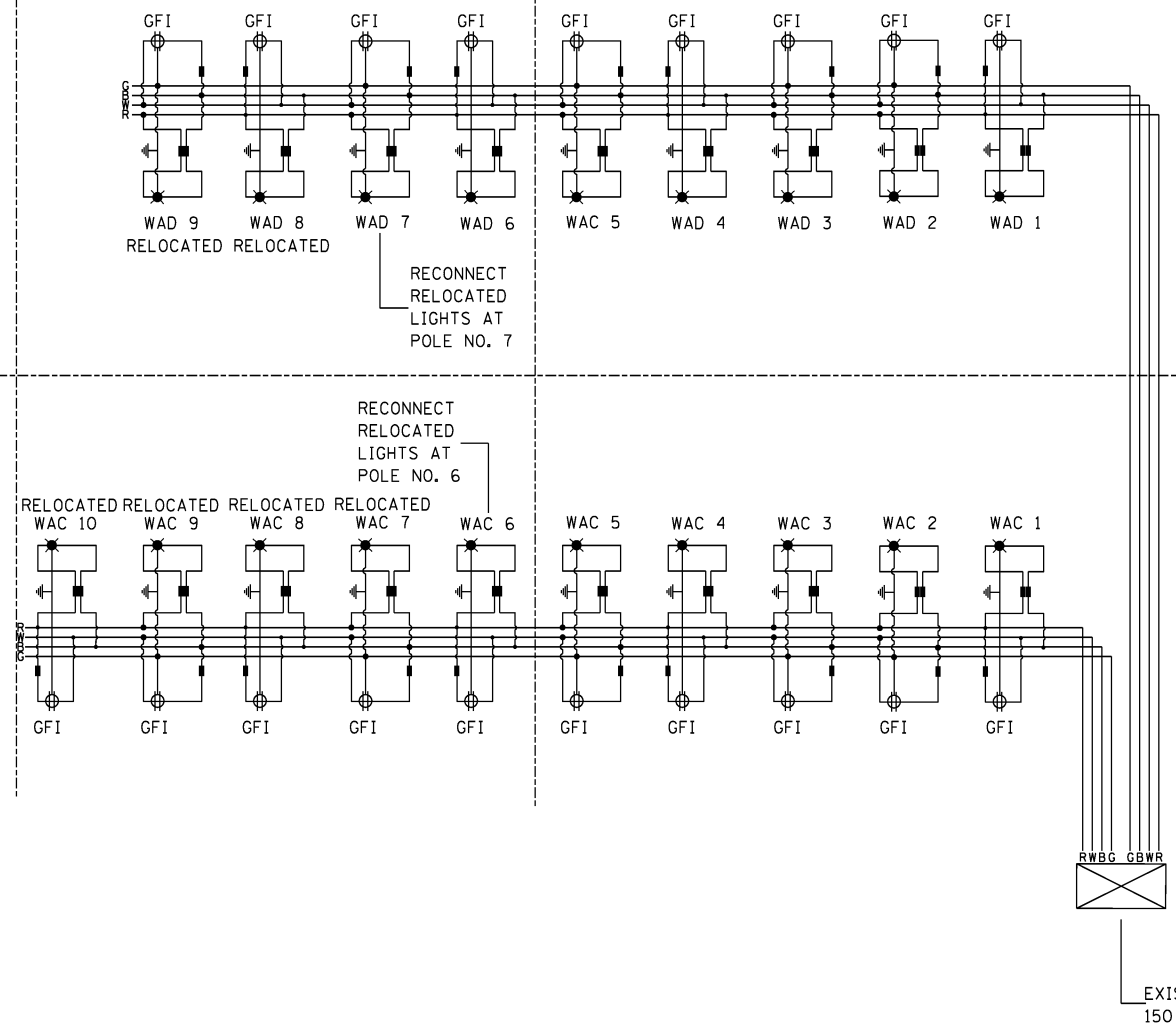
SEVENTH STREET

SIXTH STREET

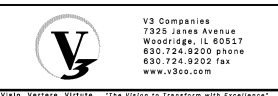
SIXTH STREET

ILLINOIS STATE ROUTE 72 (MAIN STREET)

ILLINOIS STATE ROUTE 31 (EIGHTH STREET)



EXISTING CONTROLLER "W"  
150 AMP 120/240 AC 1G 3-WIRE



USER NAME = #USER#	DESIGNED <i>ESI</i>	REVISED -
	DRAWN <i>ESI</i>	REVISED -
PLOT SCALE = #SCALE#	CHECKED <i>GJS</i>	REVISED -
PLOT DATE = #DATE#	DATE <i>07/03/12</i>	REVISED -

STATE OF ILLINOIS  
DEPARTMENT OF TRANSPORTATION

STREET LIGHTING PLAN  
WIRING AND GFI DIAGRAMS

SCALE: 1" = 50' SHEET NO. 2 OF 3 SHEETS STA. TO STA.

F.A.U. RTE.	SECTION	COUNTY	TOTAL SHEETS	SHEET NO.
3887	S-N	KANE	153	126
CONTRACT NO. 60A95				
FED. ROAD DIST. NO. 1 ILLINOIS FED. AID PROJECT				