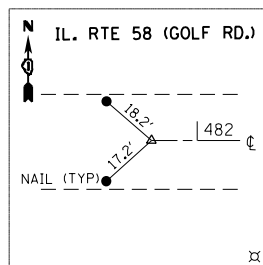


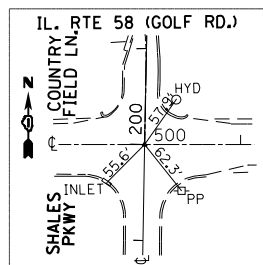
**CONTROL POINT #100**

NAIL  
 STA. 481+76.20  
 N=1959567.3417  
 E=1008199.8611



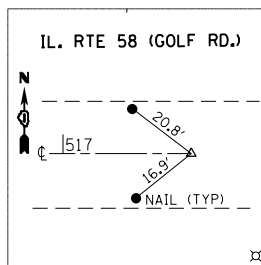
**CONTROL POINT #105**

NAIL  
 STA. 500+00  
 N=1959596.5105  
 E=1010023.4236



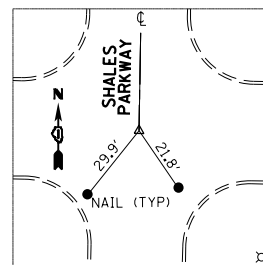
**CONTROL POINT #101**

NAIL  
 STA. 517+66.82  
 N=1959624.8707  
 E=1011790.0165



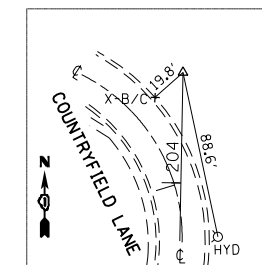
**CONTROL POINT #104**

NAIL  
 STA. 179+02.70  
 N=1957499.2118  
 E=1010020.7444



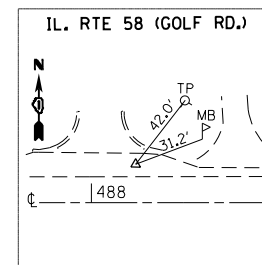
**CONTROL POINT #102**

NAIL  
 STA. 204+57.61  
 N=1960054.1210  
 E=1010024.6051



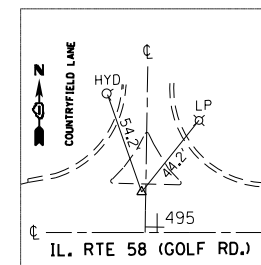
**CONTROL POINT #9**

NAIL  
 STA. 488+23/20' (L)  
 N=1959597.7371  
 E=1008846.2762



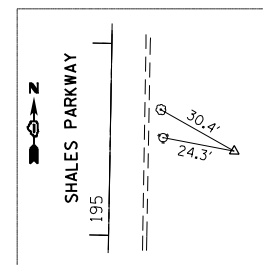
**CONTROL POINT #8**

NAIL  
 STA. 495+92/21' (L)  
 N=1959611.1534  
 E=1009615.0883



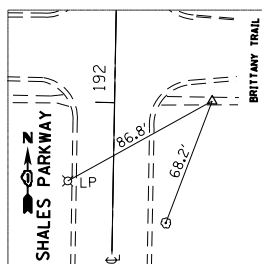
**CONTROL POINT #7**

NAIL  
 STA. 196+48/51.7' (R)  
 N=1959245.4021  
 E=1010074.6484



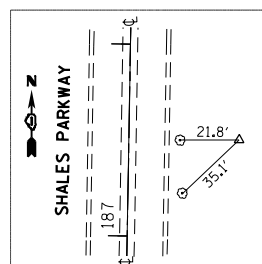
**CONTROL POINT #6**

NAIL  
 STA. 192+01/50.8' (R)  
 N=1958798.1422  
 E=1010073.2642



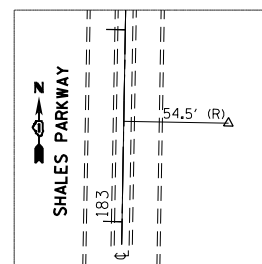
**CONTROL POINT #5**

NAIL  
 STA. 187+50/49' (R)  
 N=1958347.0880  
 E=1010070.7673



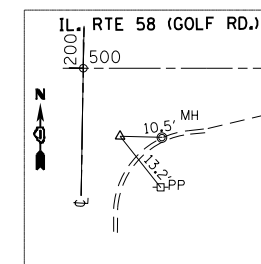
**CONTROL POINT #4**

NAIL  
 STA. 183+52/54.5' (R)  
 N=1957948.7116  
 E=1010075.8748



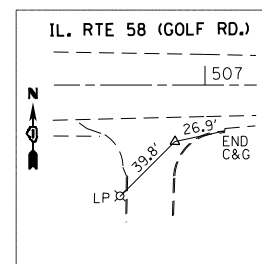
**CONTROL POINT #3**

NAIL  
 STA. 500+30/37.6' (R)  
 N=1959559.4012  
 E=1010054.2996



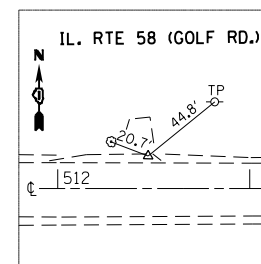
**CONTROL POINT #2**

NAIL  
 STA. 506+84/29.5' (R)  
 N=1959578.0729  
 E=1010708.1753



**CONTROL POINT #1**

NAIL  
 STA. 512+47.0/16.9' (L)  
 N=1959633.4919  
 E=1011270.0236



**BENCHMARK #1**

ELEV. 795.27  
 TOP OF ROW MARKER N. SIDE  
 IL. 58 STA. 488±50

**BENCHMARK #3**

ELEV. 797.52  
 IN CONC. BASE L.P. IN  
 N. E. CORNER IL. 58 & SHALES

**BENCHMARK #2**

ELEV. 798.23  
 IN CONC. BASE OF LP  
 IN ENT. TO LITTLE ANGELS  
 S. SIDE IL. 58 ±800' E. OF SHALES

**BENCHMARK #4**

ELEV. 806.99  
 IN CONC. BASE L.P. W. SIDE  
 SHALES PKWY STA 185±50

FILE NAME =	USER NAME = paraynoal	DESIGNED -	REVISED -	<b>STATE OF ILLINOIS DEPARTMENT OF TRANSPORTATION</b>	<b>ALIGNMENT, TIES AND BENCHMARKS IL. RTE. 58 AT SHALES PKWY.</b>			F.A.U. R.E.	SECTION	COUNTY	TOTAL SHEETS	SHEET NO.
es:\pw\work\p\pidot\paraynoal\0150569\PI2209-sh1-ATB.dgn		DRAWN -	REVISED -					1320	581-N-1	COOK	50	13
PLOT SCALE = 200.0000' / in.		CHECKED -	REVISED -					CONTRACT NO. 60L43				
PLOT DATE = 8/23/2012		DATE -	REVISED -					ILLINOIS FED. AID PROJECT				