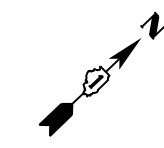
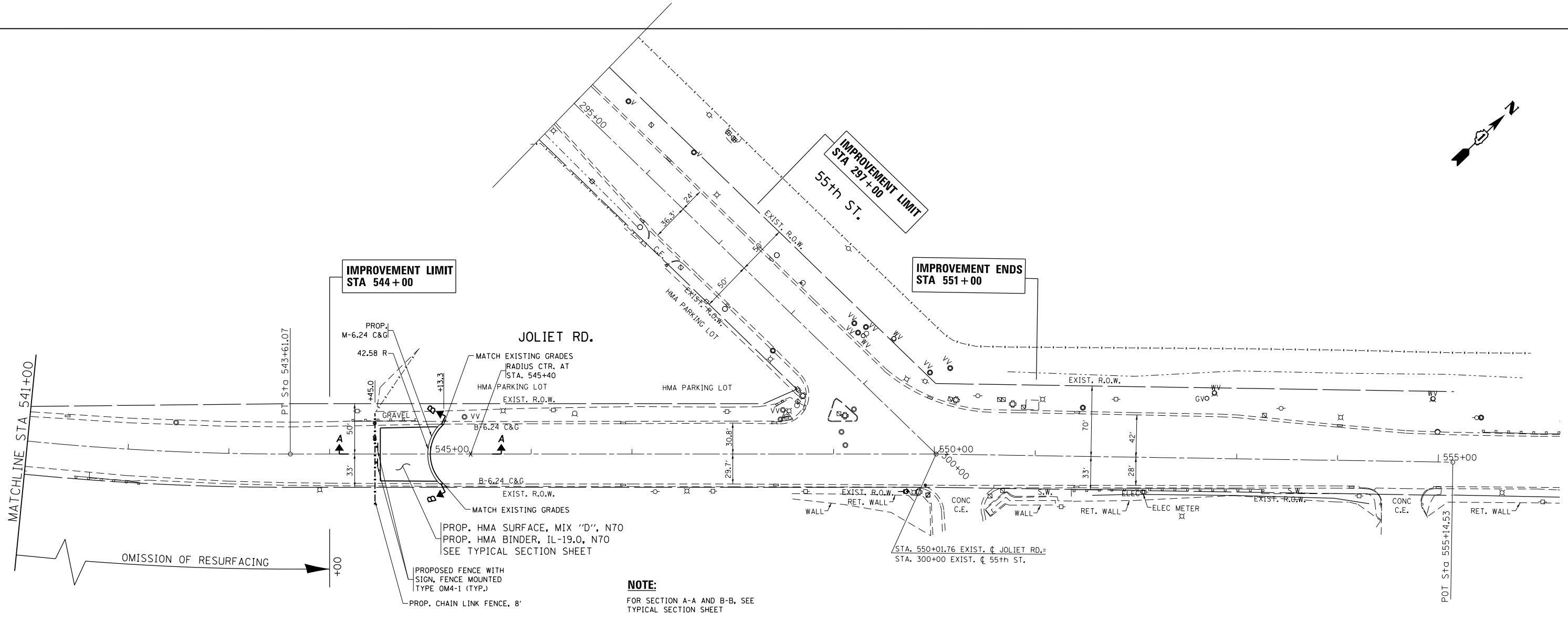
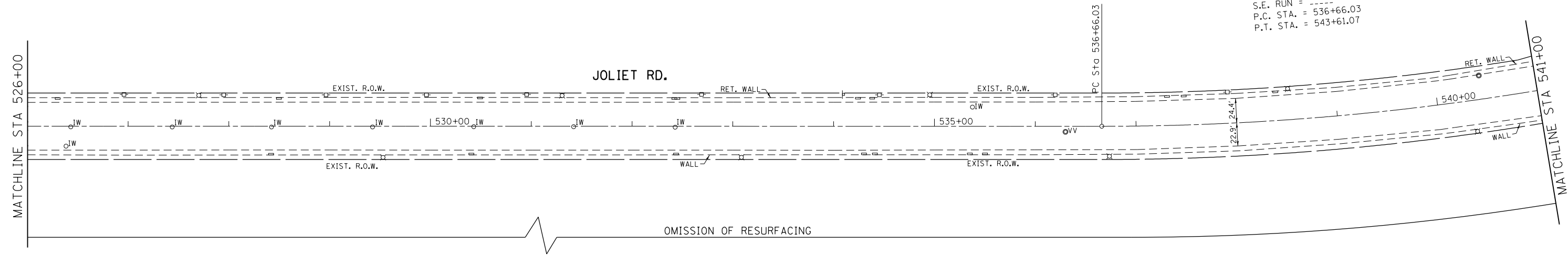
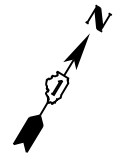


EXIST. CURVE E-JOL-1
 PI STA. = 540+15.56
 $\Delta = 15^\circ 03' 09''$ (LT)
 $D = 2^\circ 09' 57''$
 $R = 2,645.60'$
 $T = 349.53'$
 $L = 695.04'$
 $E = 22.99'$
 $e = \text{---}$
 $T.R. = \text{---}$
 $S.E. \text{ RUN} = \text{---}$
 $P.C. \text{ STA.} = 536+66.03$
 $P.T. \text{ STA.} = 543+61.07$



NOTE:
 FOR SECTION A-A AND B-B, SEE
 TYPICAL SECTION SHEET

FILE NAME =	USER NAME = windot	DESIGNED -	REVISED -
et:\pw\work\p1dot\windot\0254883\p13591\sh1.gennote.dgn		DRAWN -	REVISED -
	PLOT SCALE = 100.0026' / in.	CHECKED -	REVISED -
	PLOT DATE = 8/24/2012	DATE -	REVISED -

**STATE OF ILLINOIS
 DEPARTMENT OF TRANSPORTATION**

**EXISTING AND PROPOSED ROADWAY PLAN
 JOLIET ROAD AT 55th STREET**

SCALE: 1"=50' SHEET NO. 2 OF 2 SHEETS STA. 526+00.00 TO STA. 555+00.00

F.A.U. RTE.	SECTION	COUNTY	TOTAL SHEETS	SHEET NO.
3562	430Y-N	COOK	12	8
CONTRACT NO. 60T48				
ILLINOIS FED. AID PROJECT				