

STATE OF ILLINOIS  
DEPARTMENT OF TRANSPORTATION  
DIVISION OF HIGHWAYS

F.A.U. RTE.	SECTION	COUNTY	TOTAL SHEETS	SHEET NO.
3562	430Y-N	COOK	12	1
		ILLINOIS	CONTRACT NO. 60T48	

FOR INDEX OF SHEETS, SEE SHEET NO. 2

THE IMPROVEMENT IS LOCATED IN THE VILLAGES OF HODGKINS AND MCCOOK.

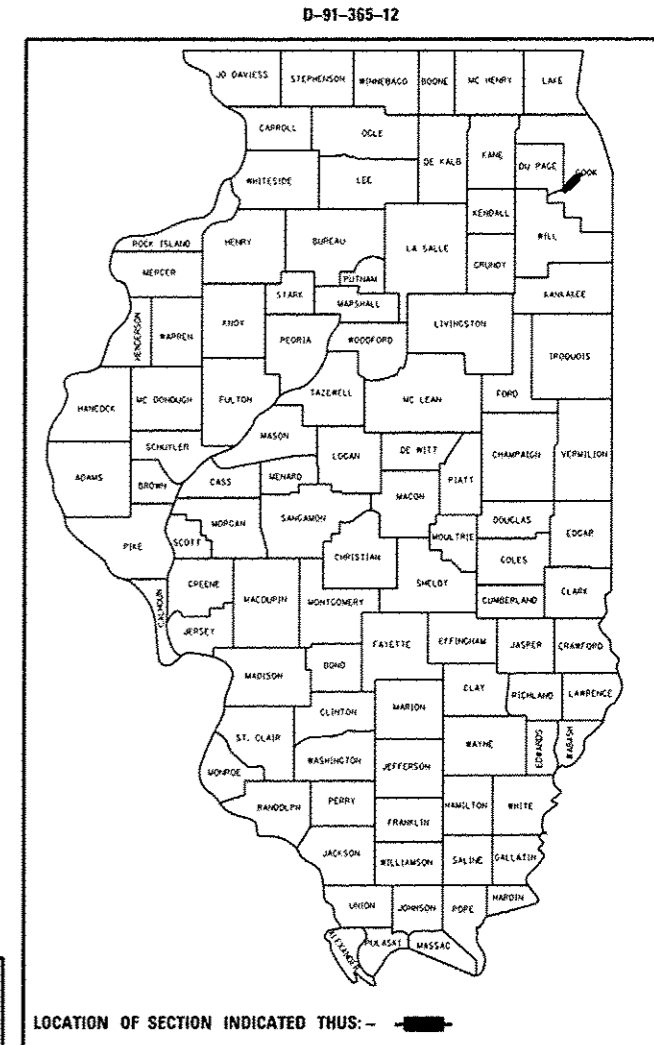
**PROPOSED  
HIGHWAY PLANS**

F.A.U. ROUTE 3562: JOLIET ROAD  
EAST OF LENZI AVE  
SECTION: 430Y-N  
INTERSECTION IMPROVEMENT  
COOK COUNTY

**TRAFFIC DATA**

2010 ADT: 18,300

POSTED SPEED LIMIT: 30 MPH WEST OF EAST AVE  
45 MPH EAST OF 55TH ST

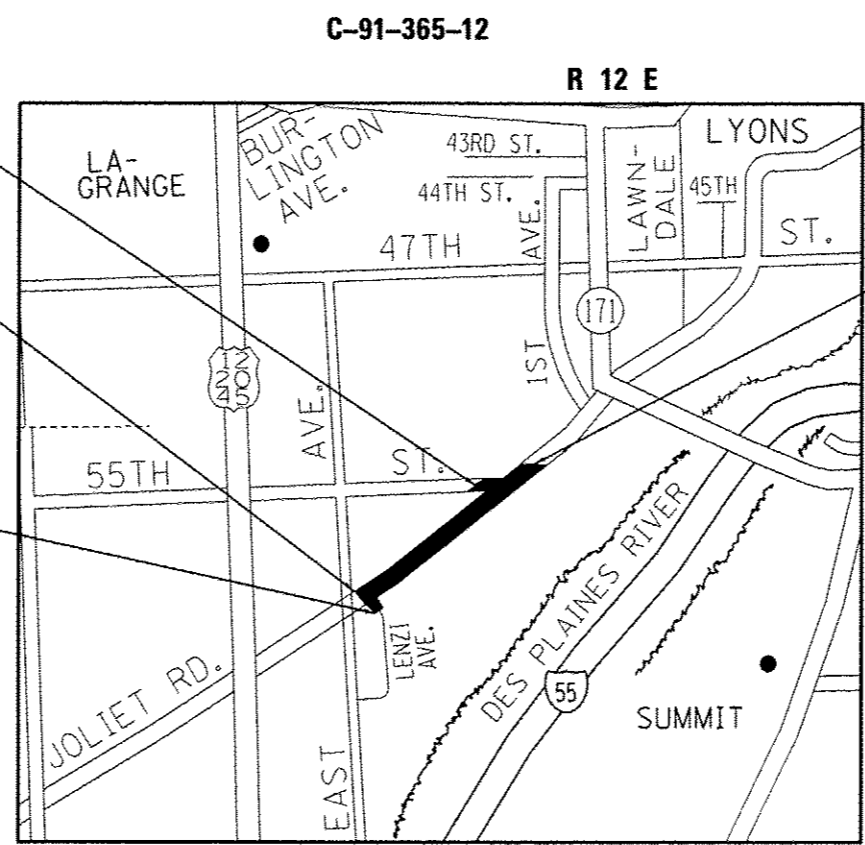


IMPROVEMENT LIMITS:  
STA. 297 + 00

IMPROVEMENT BEGINS:  
STA. 499 + 00

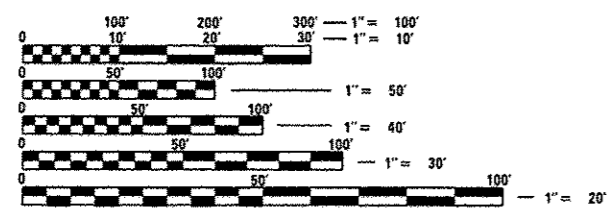
IMPROVEMENT LIMITS:  
STA. 198 + 00

IMPROVEMENT ENDS:  
STA. 551 + 00



LYONS TOWNSHIP

GROSS LENGTH = 5200.00 FT. = 0.985 MILE  
NET LENGTH = 5200.00 FT. = 0.985 MILE



FULL SIZE PLANS HAVE BEEN PREPARED USING STANDARD ENGINEERING SCALES. REDUCED SIZED PLANS WILL NOT CONFORM TO STANDARD SCALES. IN MAKING MEASUREMENTS ON REDUCED PLANS, THE ABOVE SCALES MAY BE USED.

J.U.L.I.E.  
JOINT UTILITY LOCATION INFORMATION FOR EXCAVATION  
1-800-892-0123  
OR 811

PROJECT ENGINEER: ROBERT BORO (847) 705-4237  
PROJECT MANAGER: ISSAM RAYYAN (847) 705-4178

CONTRACT NO. 60T48

STATE OF ILLINOIS  
DEPARTMENT OF TRANSPORTATION  
DIVISION OF HIGHWAYS

SUBMITTED August 24 2012  
*John Fortmann*  
DEPUTY DIRECTOR OF HIGHWAYS, REGION ENGINEER

October 5 2012  
*John D. Baranelli P.E.*  
ENGINEER OF DESIGN AND ENVIRONMENT

October 5 2012  
*William R. Frey*  
DIRECTOR OF HIGHWAYS, CMEP ENGINEER

PRINTED BY THE AUTHORITY  
OF THE STATE OF ILLINOIS

**INDEX OF SHEETS**

SHEET NO.	DESCRIPTION
1	TITLE SHEET
2	INDEX OF SHEETS, STATE STANDARDS, AND GENERAL NOTES
3	SUMMARY OF QUANTITIES
4	TYPICAL SECTIONS
5	ALIGNMENT, TIES AND BENCHMARKS PLAN
6	SIGNING PLAN
7-8	EXISTING AND PROPOSED ROADWAY PLANS
9-10	EXISTING AND PROPOSED DRAINAGE PLANS
11	ARTERIAL ROAD INFORMATION SIGN (TC-22)
12	DRIVEWAY ENTRANCE SIGNING (TC-26)

**STATE STANDARDS**

STANDARD NO.	DESCRIPTION
602301 - 03	INLET - TYPE A
604006 - 04	FRAME AND GRATE TYPE 3
606001 - 04	CONCRETE CURB TYPE B AND COMBINATION CONCRETE CURB AND GUTTER
630001 - 10	STEEL PLATE BEAM GUARDRAIL
630301 - 05	SHOULDER WIDENING FOR TYPE (SPECIAL) GUARDRAIL TERMINAL
635006 - 03	REFLECTOR AND TERMINAL MARKER PLACEMENT
664001 - 02	CHAIN LINK FENCE
701301 - 04	LANE CLOSURE, 2L, 2W, SHORT TIME OPERATIONS
701501 - 06	URBAN LANE CLOSURE, 2L, 2W, UNDIVIDED
701901 - 02	TRAFFIC CONTROL DEVICES
720001 - 01	SIGN PANEL MOUNTING DETAILS

**GENERAL NOTES:**

BEFORE STARTING ANY EXCAVATION, THE CONTRACTOR SHALL CALL "J.U.L.I.E." AT (800) 892-0123 OR 811 FOR FIELD LOCATIONS OF BURIED ELECTRIC, TELEPHONE AND GAS UTILITIES. 48 HOUR NOTIFICATION IS REQUIRED.

TEN (10) FOOT TRANSITIONS SHALL BE USED TO MATCH PROPOSED CURB AND GUTTER AND MEDIAN ITEMS OF WORK TO EXISTING CURBS AND GUTTER AND MEDIANS IN THE FIELD, UNLESS OTHERWISE SHOWN. THE TRANSITIONS SHALL BE PAID FOR AT THE CONTRACT UNIT PRICE FOR THE PROPOSED ITEMS OF WORK SPECIFIED.

THE CONTRACTOR SHALL COORDINATE CONSTRUCTION ACTIVITIES WITH UTILITY COMPANIES AND THE VILLAGES OF HODGKINS AND MCCOOK.

THE CONTRACTOR WILL NOT BE ALLOWED TO SET UP A YARD OR FIELD OFFICE ON STATE PROPERTY WITHOUT WRITTEN PERMISSION FROM THE DEPARTMENT.

THE REMOVAL OF GUARDRAIL TERMINAL SECTIONS SHALL BE INCLUDED IN THE UNIT PRICE PER FOOT FOR "GUARDRAIL REMOVAL."

ALL DAMAGE TO EXISTING PAVEMENT MARKINGS OR RAISED REFLECTIVE PAVEMENT MARKERS OUTSIDE THE REMOVAL LINE SHOWN ON THE PLANS SHALL BE REPLACED AT NO ADDITIONAL COST TO THE DEPARTMENT.

BEFORE BEGINNING ANY WORK, THE CONTRACTOR SHALL RETAIN AND RECORD FOR FUTURE REFERENCE, ALL EXISTING PAVEMENT MARKING LINES (AND RAISED REFLECTIVE PAVEMENT MARKERS) IN ORDER THAT THESE LOCATIONS CAN BE RE-ESTABLISHED FOR STRIPING. EXACT LOCATIONS OF ALL PAVEMENT MARKINGS SHALL BE AS DIRECTED BY THE ENGINEER.

IT SHALL BE THE CONTRACTOR'S RESPONSIBILITY TO VERIFY ALL DIMENSIONS AND CONDITIONS EXISTING IN THE FIELD PRIOR TO CONSTRUCTION AND ORDERING OF MATERIALS.

THE CONTRACTOR SHALL CONTACT THE DISTRICT ONE TRAFFIC CONTROL SUPERVISOR AT (847)705-4470 A MINIMUM OF 72 HOURS IN ADVANCE OF BEGINNING WORK.

THESE PLANS HAVE BEEN PREPARED FROM NOTES RECEIVED FROM THE BUREAUS OF MAINTENANCE AND CONSTRUCTION.

THE THICKNESS OF THE HMA MIXTURE SHOWN ON THE PLANS IS THE NOMINAL THICKNESS. DEVIATIONS FROM THE NOMINAL THICKNESS WILL BE PERMITTED WHEN SUCH DEVIATIONS OCCUR DUE TO IRREGULARITIES IN THE EXISTING SURFACE OR BASE ON WHICH THE HMA MIXTURE IS PLACED.

THE CONTRACTOR SHALL BE REQUIRED TO PROVIDE ACCESS TO ABUTTING PROPERTY AT ALL TIMES DURING THE CONSTRUCTION OF THIS PROJECT.

FOR FRAMES AND LIDS ADJUSTMENT WITHOUT MILLING, REUSE EXISTING FRAME AND LID UNLESS OTHERWISE SPECIFIED IN THE PLANS.

DO NOT SCALE PLANS FOR CONSTRUCTION DIMENSIONS.

THE CONTRACTOR SHALL VERIFY THE EXISTING TYPE/HEIGHT OF EXISTING GUARDRAIL BEFORE ORDERING THE NEW TERMINAL SECTION. COST INCLUDED WITH THE COST OF THE TERMINAL. THE TERMINAL SECTION SHALL MATCH THE HEIGHT OF THE EXISTING GUARDRAIL.

THE CONTRACTOR SHALL SALVAGE AND RETURN THE EXISTING DETOUR SIGNS, TRAFFIC BARRICADES, GUARDRAIL, AND BARRIER WALLS TO:

SOUTH SIDE SIGN SHOP  
CONTACT: FRANK VITAGLIANO (708) 544-9372

THIS WORK SHALL INCLUDE REMOVING, TRANSPORTING, AND UNLOADING THE EXISTING SIGNS TO THE ABOVE YARD, WHICH COST IS INCLUDED IN THE COST OF "REMOVE EXISTING SIGN PANEL."

FILE NAME :	USER NAME : windot	DESIGNED -	REVISED -	<b>STATE OF ILLINOIS</b>	<b>JOLIET RD EAST OF LENZI AVE</b>	F.A.P. RTE.	SECTION	COUNTY	TOTAL SHEETS	SHEET NO.	
c:\pwwork\pvidot\windot\dd254803\p1359	shl-gennote.dgn	DRAWN -	REVISED -			3562	430Y-N	COOK	12	2	
	PLOT SCALE = 100.0000' / 1"	CHECKED -	REVISED -			INDEX OF SHEETS, STATE STANDARDS, AND GENERAL NOTES					
	PLOT DATE = 8/24/2012	DATE -	REVISED -			SHEET OF SHEETS		STA. TO STA.		ILLINOIS FED. AID PROJECT	
							CONTRACT NO. 60T48				

URBAN

100%  
STATE

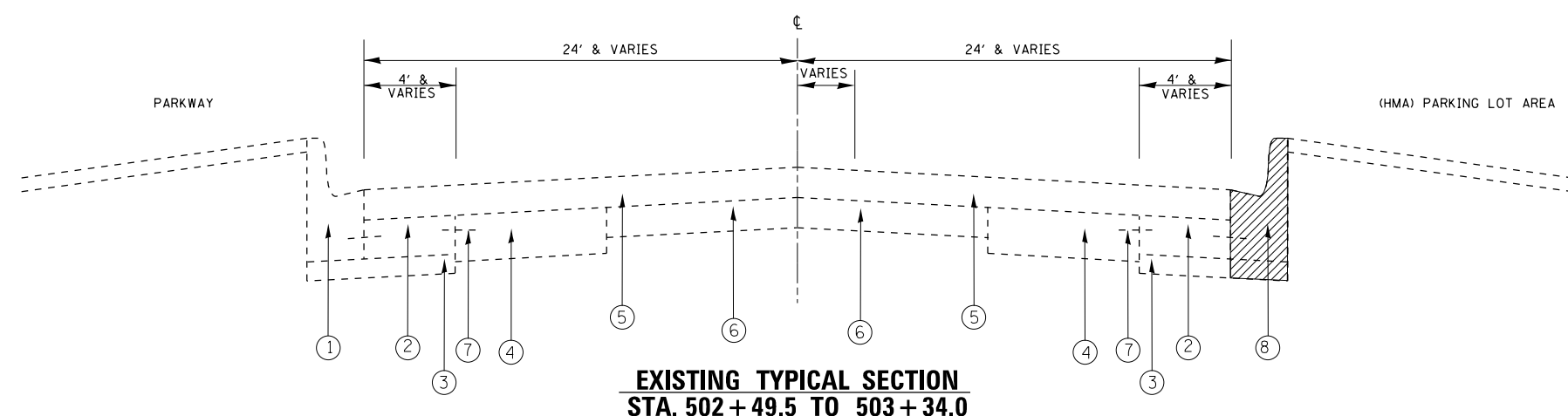
SUMMARY OF QUANTITIES				CONSTRUCTION TYPE CODE					
CODE NO	ITEM	UNIT	TOTAL QUANTITIES	0021					
35400450	PORTLAND CEMENT CONCRETE BASE COURSE WIDENING 9-1/2"	SO YD	✓ 64	64					
20800150	TRENCH BACKFILL	CU YD	✓ 0.8	0.8					
30300112	AGGREGATE SUBGRATE IMPROVEMENT 12"	SO YD	✓ 64	64					
40603085	HOT-MIX ASPHALT BINDER COURSE, IL-19.0, N70	TON	60	60					
40603340	HOT-MIX ASPHALT SURFACE COURSE, MIX "D", N70	TON	75	75					
44000100	PAVEMENT REMOVAL	SO YD	99	99					
44000500	COMBINATION CURB AND GUTTER REMOVAL	FOOT	76	76					
44001980	CONCRETE BARRIER REMOVAL	FOOT	20	20					
550A0050	STORM SEWERS, CLASS A, TYPE 1 12"	FOOT	6	6					
60235700	INLETS, TYPE A, TYPE 3 FRAME AND GRATE	EACH	1	1					
60605000	COMBINATION CONCRETE CURB AND GUTTER, TYPE B-6.24	FOOT	125	125					
60610400	COMBINATION CONCRETE CURB AND GUTTER, TYPE M-6.24	FOOT	116	116					
* 63000001	STEEL PLATE BEAM GUARDRAIL, TYPE A, 6 FOOT POSTS	FOOT	60	60					
* 63100085	TRAFFIC BARRIER TERMINAL, TYPE 6	EACH	1	1					
* 63100167	TRAFFIC BARRIER TERMINAL, TYPE 1 (SPECIAL) TANGENT	EACH	1	1					

URBAN

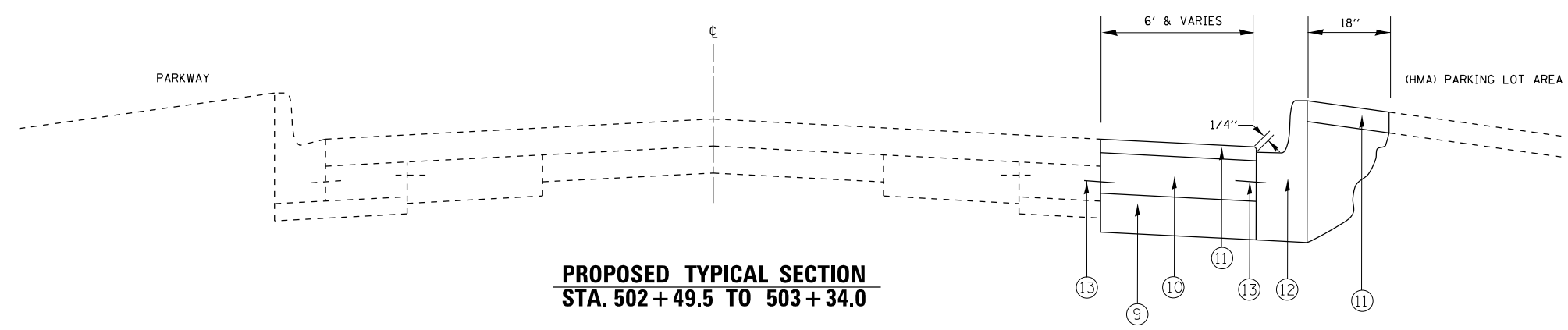
100%  
STATE

SUMMARY OF QUANTITIES				CONSTRUCTION TYPE CODE					
CODE NO	ITEM	UNIT	TOTAL QUANTITIES	0021					
63200310	GUARDRAIL REMOVAL	FOOT	53	53					
66400505	CHAIN LINK FENCE, 8'	FOOT	83	83					
66409400	CHAIN LINK GATES, 8' X 12' DOUBLE	EACH	1	1					
67100100	MOBILIZATION	L SUM	1	1					
70102620	TRAFFIC CONTROL AND PROTECTION, STANDARD 701501	L SUM	1	1					
* 72000100	SIGN PANEL - TYPE 1	SO FT	92	92					
* 78200410	GUARDRAIL MARKER, TYPE A	EACH	6	6					
* 78201000	TERMINAL MARKER - DIRECT APPLIED	EACH	1	1					
X0325207	TELEVISION INSPECTION OF SEWER	FOOT	9251	9251					
X4401198	HOT-MIX ASPHALT SURFACE REMOVAL, VARIABLE DEPTH	SO YD	469	469					
X5537800	STORM SEWERS TO BE CLEANED 12"	FOOT	1537	1537					
X5537900	STORM SEWERS TO BE CLEANED 15"	FOOT	1611	1611					
X5538000	STORM SEWERS TO BE CLEANED 18"	FOOT	1112	1112					
X5538200	STORM SEWERS TO BE CLEANED 24"	FOOT	290	290					
X7240195	REMOVE EXISTING SIGN PANEL	EACH	45	45					
Z0013798	CONSTRUCTION LAYOUT	L SUM	1	1					
Z0018500	DRAINAGE STRUCTURES TO BE CLEANED	EACH	1	1					
Z0030850	TEMPORARY INFORMATION SIGNING	SO FT	51.4	51.4					

\*Specialty Items



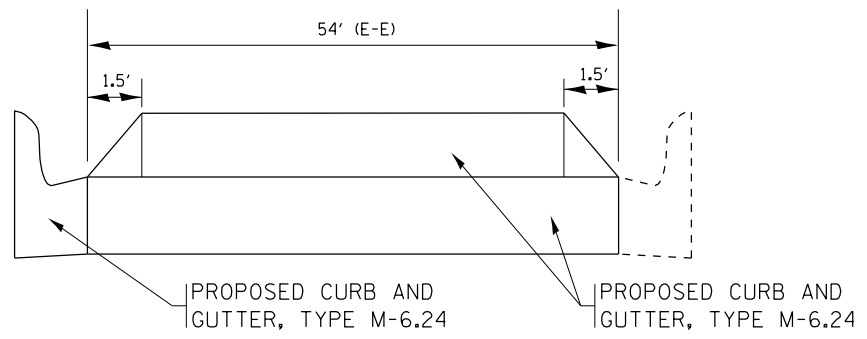
**EXISTING TYPICAL SECTION**  
STA. 502+49.5 TO 503+34.0



**PROPOSED TYPICAL SECTION**  
STA. 502+49.5 TO 503+34.0

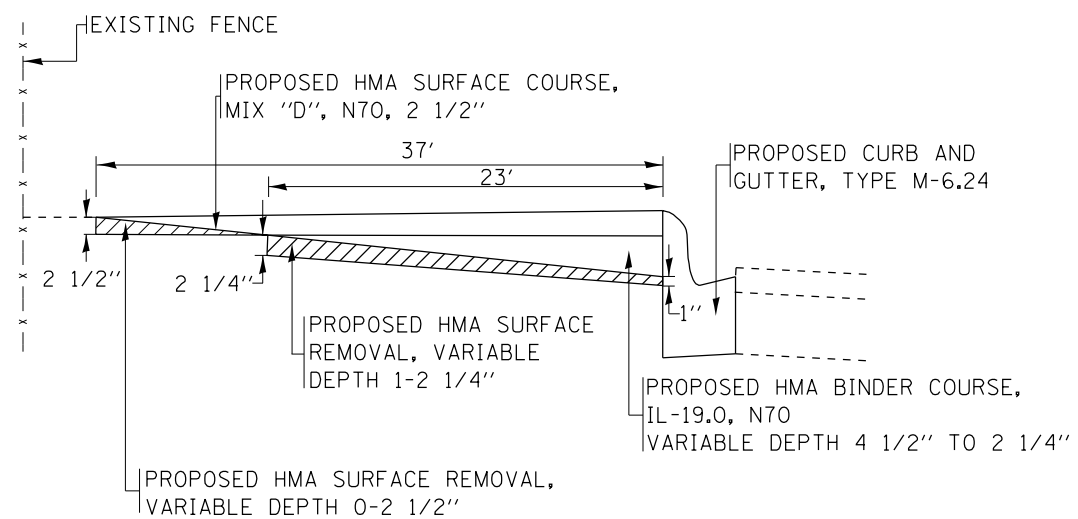
**LEGEND**

- ① EXISTING CURB AND GUTTER, TYPE B-6.24
- ② EXISTING PCC BASE COARSE, WIDENING, 9"
- ③ EXISTING GRANULAR SUBBASE, 6"
- ④ EXISTING PCC PAVEMENT, 9"
- ⑤ EXISTING HMA OVERLAY, 5"
- ⑥ EXISTING PCC PAVEMENT, 7"
- ⑦ EXISTING TIE BAR
- ⑧ PROPOSED CURB AND GUTTER REMOVAL
- ⑨ PROPOSED AGGREGATE SUBGRADE IMPROVEMENT, 12"
- ⑩ PROPOSED PCC BASE COURSE, 9 1/2"
- ⑪ PROPOSED HMA SURFACE COURSE, MIX "D", N70, 2 1/2"
- ⑫ PROPOSED COMBINATION CONCRETE CURB AND GUTTER, TYPE B-6.24
- ⑬ PROPOSED DRILL & GROUT (#6) EPOXY COATED DEFORMED STEEL TIE BAR, 24" LONG, 24" C-C - COST INCLUDED IN PCC BASE COURSE, 9 1/2"



**SECTION B-B**

SEE EXISTING AND PROPOSED ROADWAY PLAN SHEETS



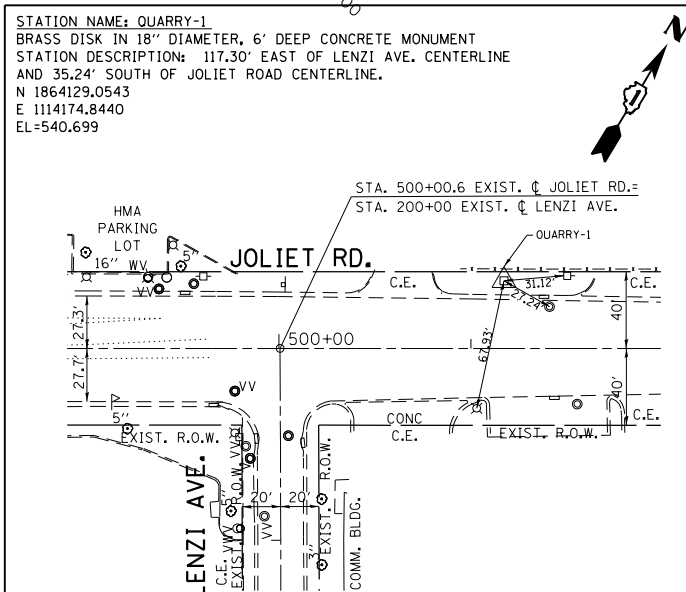
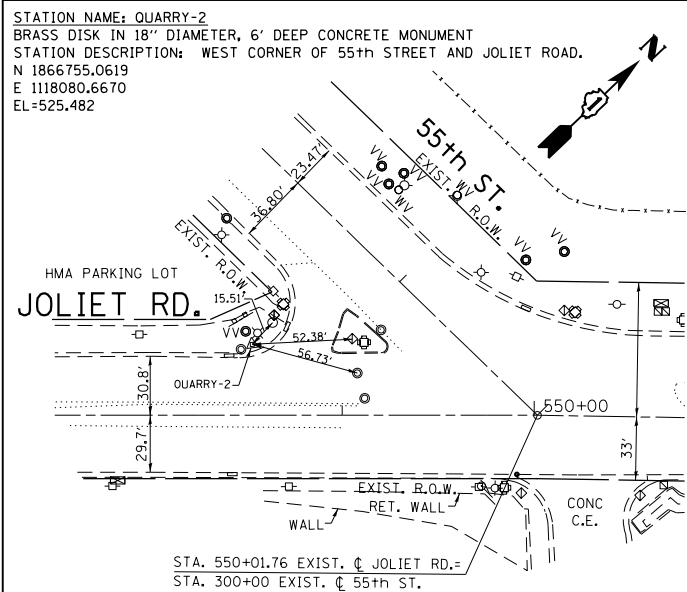
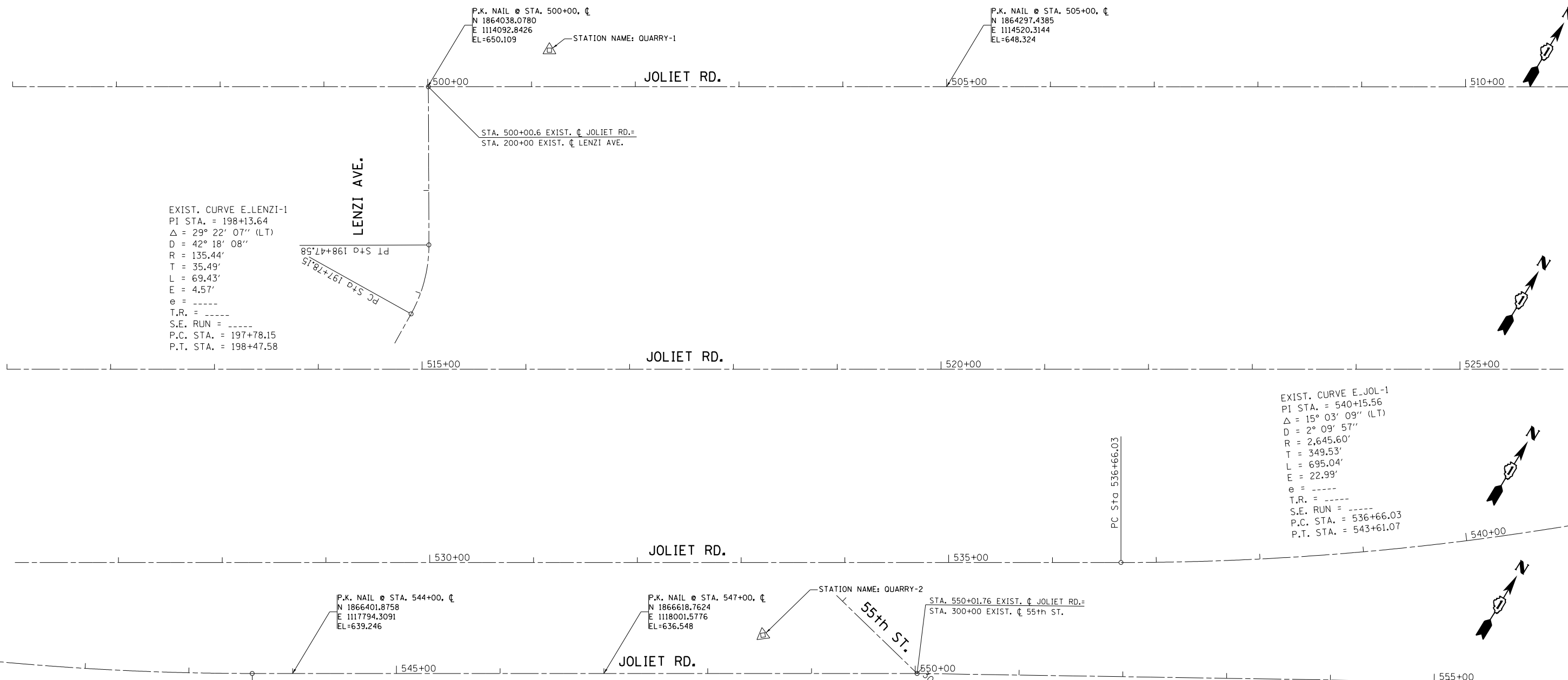
**SECTION A-A**

SEE EXISTING AND PROPOSED ROADWAY PLAN SHEETS

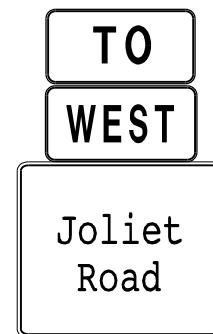
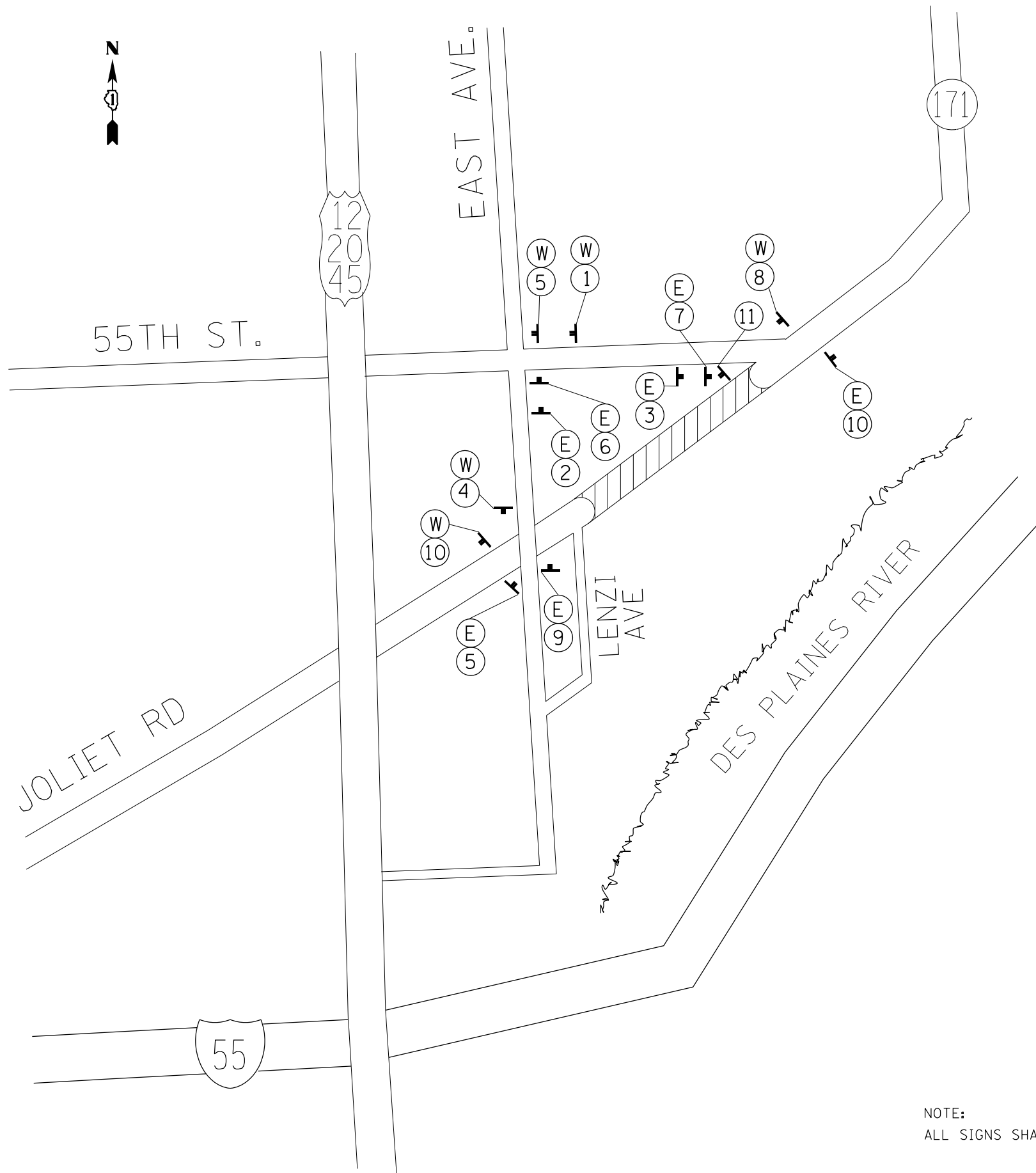
MIXTURE REQUIREMENTS	
MIXTURE USES	VOIDS AT Ndes
HMA SURFACE COURSE, MIX "D", N70 (IL 9.5mm)	4% AT 70 GYR.
HMA BINDER COURSE, IL-19.0, N70	4% AT 70 GYR.

**NOTE 1:** THE UNIT WEIGHT USED TO CALCULATE ALL HOT-MIX ASPHALT SURFACE MIXTURE IS 112 LBS/SQYD/IN

**NOTE 2:** THE "AC TYPE" FOR POLYMERIZED HMA SHALL BE "SBS/SBR PG 76-22" AND FOR NON-POLYMERIZED HMA THE "AC TYPE" SHALL BE "PG 64-22" UNLESS MODIFIED BY DISTRICT ONE SPECIAL PROVISIONS. FOR "PERCENT OF RAP" SEE DISTRICT ONE SPECIAL PROVISIONS.

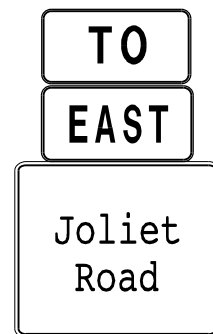


FILE NAME =	USER NAME = windot	DESIGNED -	REVISED -	<b>STATE OF ILLINOIS DEPARTMENT OF TRANSPORTATION</b>	<b>JOLIET RD EAST OF LENZI AVE ALIGNMENT, TIES AND BENCHMARKS PLAN</b>	F.A.P. RTE. =	SECTION =	COUNTY =	TOTAL SHEETS =	SHEET NO. =	
Default	Plot Scale = 100.0000' / in.	CHECKED -	REVISED -			3562	430Y-N	COOK	12	5	
	PLOT DATE = 8/24/2012	DATE -	REVISED -			CONTRACT NO. 60T48					
						ILLINOIS FED. AID PROJECT					



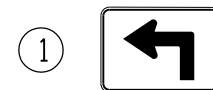
W

M4-5-2412  
24" X 12"  
M3-4  
24" X 12"



E

M4-5-2412  
24" X 12"  
M3-2  
24" X 12"



M5-1  
21" X 15"



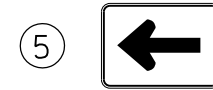
M5-1  
21" X 15"



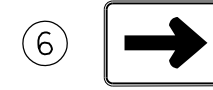
M5-2  
21" X 15"



M5-2  
21" X 15"



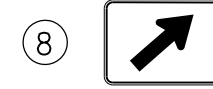
M6-1  
21" X 15"



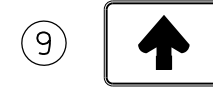
M6-1  
21" X 15"



M6-2  
21" X 15"



M6-2  
21" X 15"



M6-3  
21" X 15"



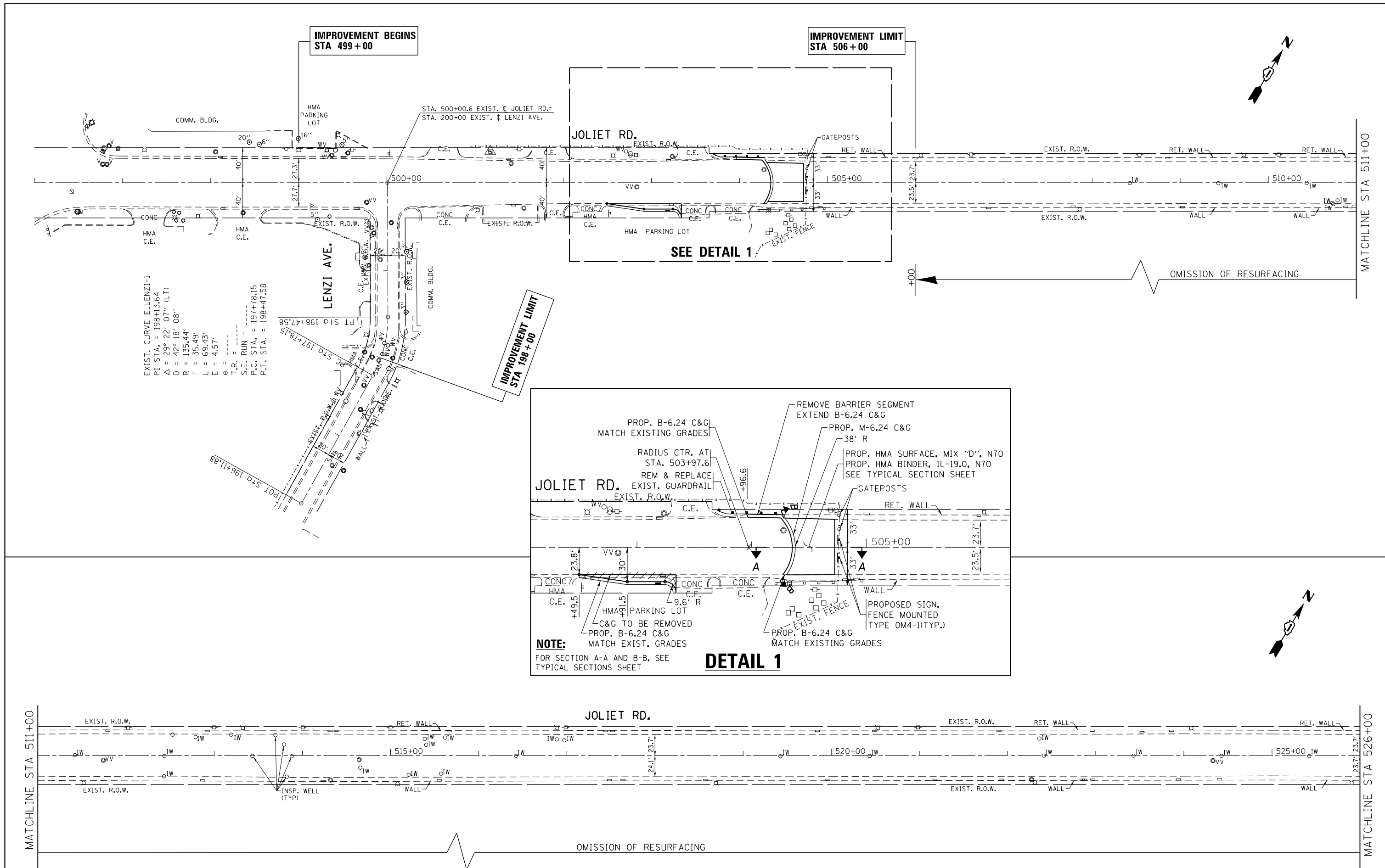
M4-6  
24" X 12"



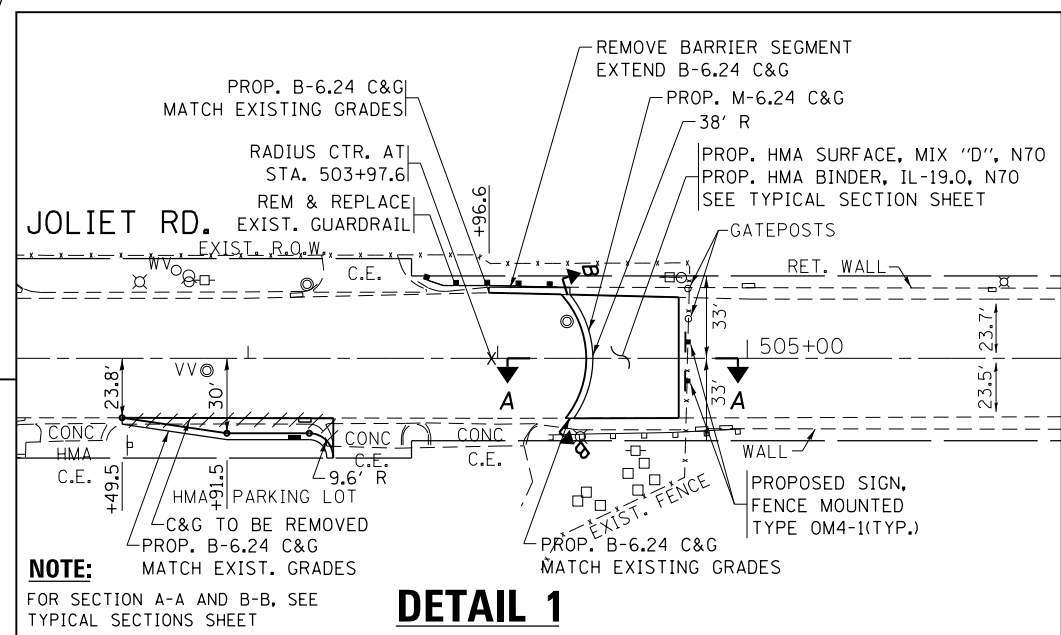
W14-1  
36" X 36"

NOTE:  
ALL SIGNS SHALL BE BLACK ON WHITE, WITH THE EXCEPTION OF "DEAD END," WHICH SHALL BE BLACK ON YELLOW.

FILE NAME =	USER NAME = windet	DESIGNED -	REVISED -	<b>STATE OF ILLINOIS DEPARTMENT OF TRANSPORTATION</b>	<b>JOLIET RD EAST OF LENZI AVE PERMANENT DETOUR SIGNING PLAN</b>				F.A.P. RTE.	SECTION	COUNTY	TOTAL SHEETS	SHEET NO.		
Default	et:\pw\work\windet\d0254883\PI3591\sh1-gennote.dgn	DRAWN -	REVISED -		SCALE:	SHEET	OF	SHEETS	STA.	TO STA.	3562	430Y-N	COOK	12	6
	PLOT SCALE = 100.0000' / in.	CHECKED -	REVISED -												
	PLOT DATE = 8/24/2012	DATE -	REVISED -												
											ILLINOIS FED. AID PROJECT			CONTRACT NO. 60T48	

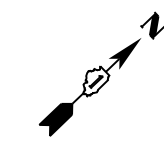
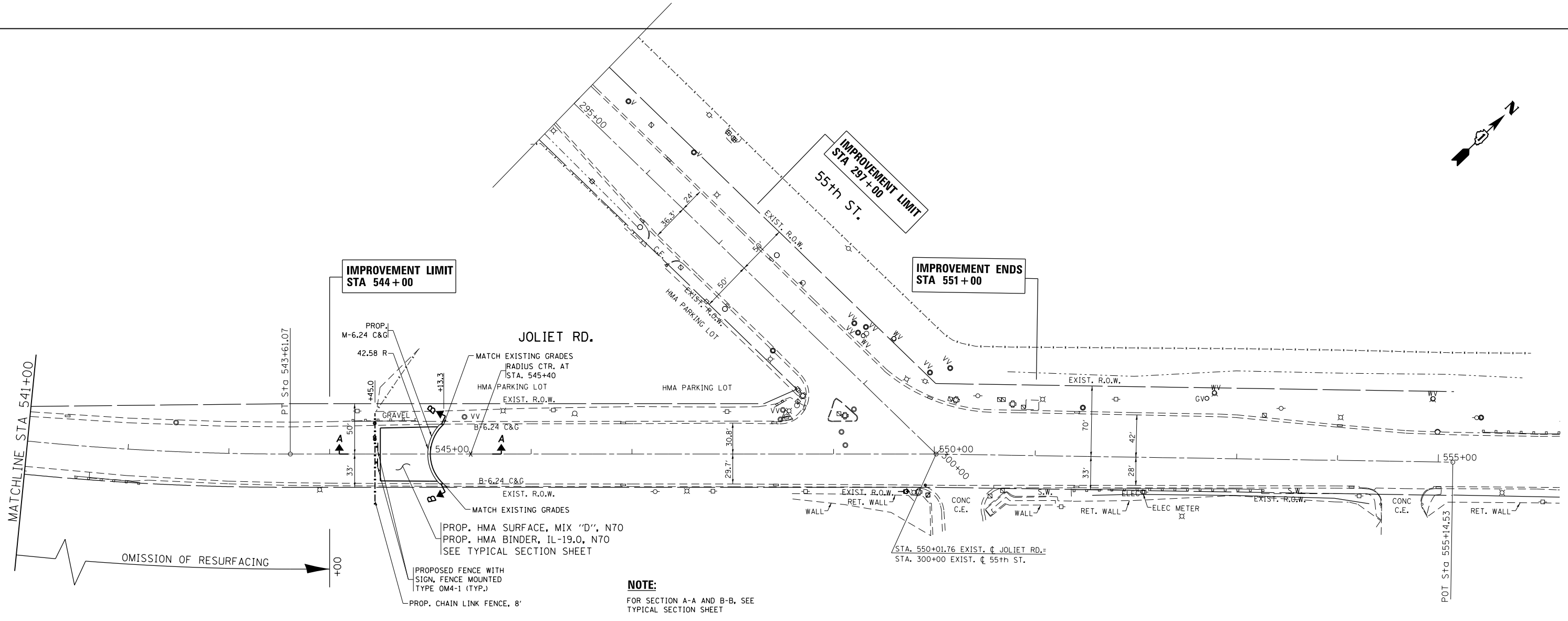
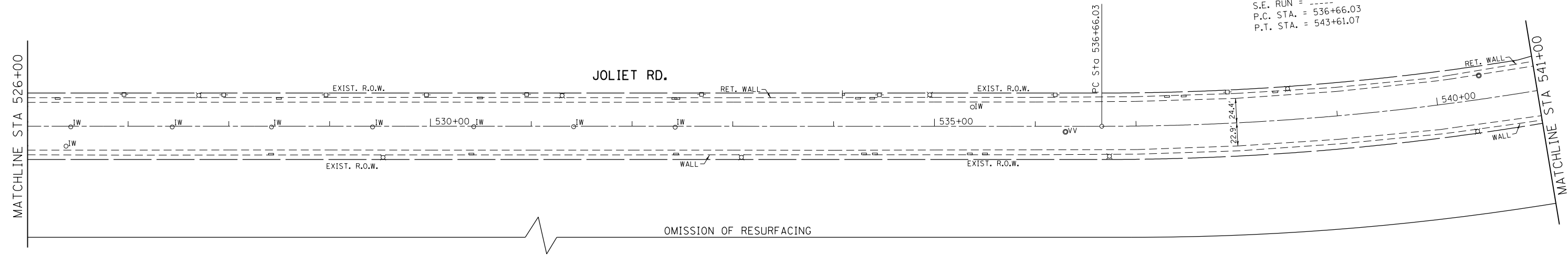
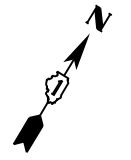


EXIST. CURVE E-LENZI-1  
 P.I. STA. = 198+13.64  
 $\Delta = 29^\circ 22' 07''$  (LT)  
 $D = 42^\circ 18' 08''$   
 $R = 135.44'$   
 $T = 35.49'$   
 $L = 69.43'$   
 $E = 4.57'$   
 $\theta =$   
 $T.R. =$   
 $S.E. RUN = 197+78.15$   
 $P.C. STA. = 198+47.58$   
 $P.T. STA. = 198+47.58$



FILE NAME =	USER NAME = windot	DESIGNED -	REVISED -	<b>STATE OF ILLINOIS DEPARTMENT OF TRANSPORTATION</b>	<b>EXISTING AND PROPOSED ROADWAY PLAN JOLIET ROAD AT 55th STREET</b>			F.A.U. RTE.	SECTION	COUNTY	TOTAL SHEETS	SHEET NO.
et:\pwork\windot\windot\0254883\PI3591\sh:gennote.dgn	PLOT SCALE = 100.0026' / in.	DRAWN -	REVISED -					3562	430Y-N	COOK	12	7
PLOT DATE = 8/24/2012	DATE -	CHECKED -	REVISED -		<b>CONTRACT NO. 60T48</b>							
					SCALE: 1"=50'			SHEET NO. 1 OF 2 SHEETS		STA. 496+00.00 TO STA. 526+00.00		ILLINOIS FED. AID PROJECT

EXIST. CURVE E-JOL-1  
 PI STA. = 540+15.56  
 $\Delta = 15^\circ 03' 09''$  (LT)  
 $D = 2^\circ 09' 57''$   
 $R = 2,645.60'$   
 $T = 349.53'$   
 $L = 695.04'$   
 $E = 22.99'$   
 $e = \text{---}$   
 $T.R. = \text{---}$   
 $S.E. \text{ RUN} = \text{---}$   
 $P.C. \text{ STA.} = 536+66.03$   
 $P.T. \text{ STA.} = 543+61.07$



**NOTE:**  
 FOR SECTION A-A AND B-B, SEE  
 TYPICAL SECTION SHEET

FILE NAME =	USER NAME = windot	DESIGNED -	REVISED -
et:\pw\work\p1dot\windot\0254883\p13591\sh1.gennote.dgn		DRAWN -	REVISED -
	PLOT SCALE = 100.0026' / in.	CHECKED -	REVISED -
	PLOT DATE = 8/24/2012	DATE -	REVISED -

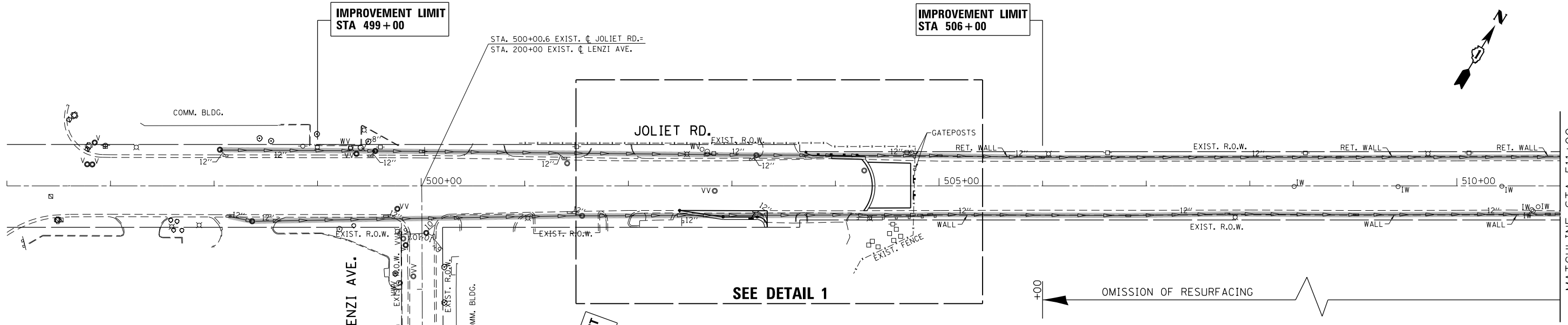
**STATE OF ILLINOIS  
 DEPARTMENT OF TRANSPORTATION**

**EXISTING AND PROPOSED ROADWAY PLAN  
 JOLIET ROAD AT 55th STREET**

SCALE: 1"=50'      SHEET NO. 2 OF 2 SHEETS      STA. 526+00.00 TO STA. 555+00.00

F.A.U. RTE.	SECTION	COUNTY	TOTAL SHEETS	SHEET NO.
3562	430Y-N	COOK	12	8
CONTRACT NO. 60T48				
ILLINOIS FED. AID PROJECT				



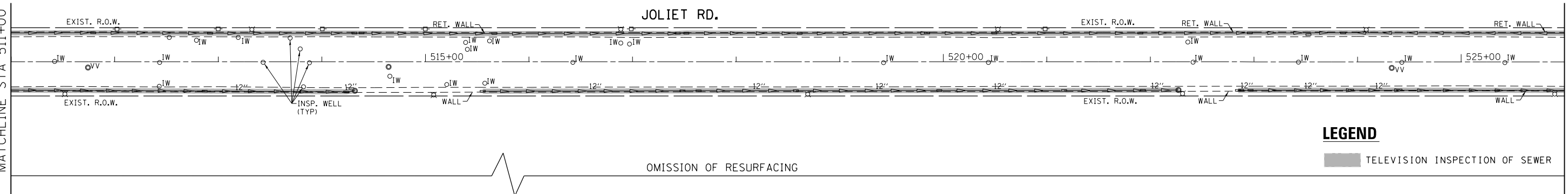
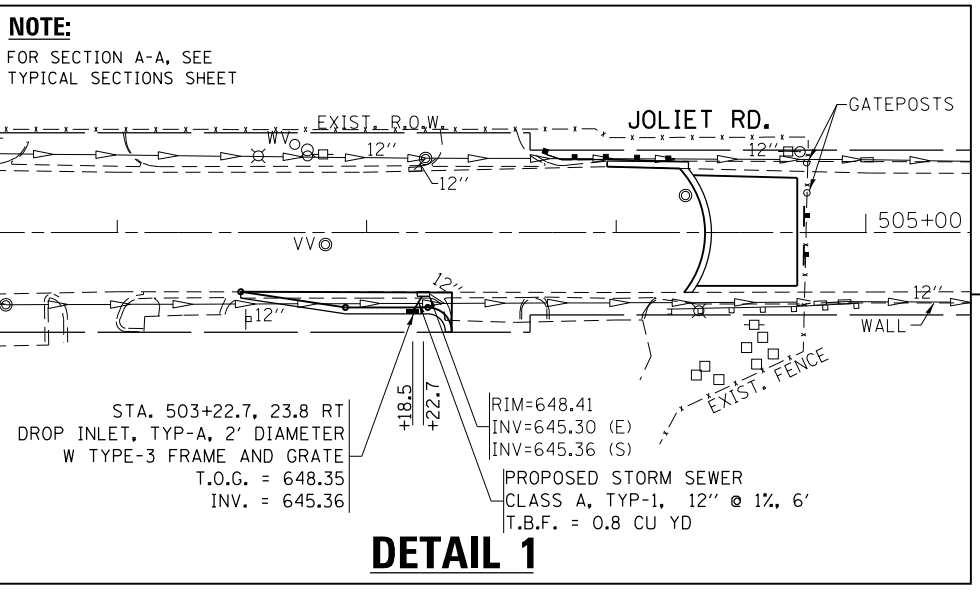


IMPROVEMENT LIMIT  
STA 198+00

SEE DETAIL 1

OMISSION OF RESURFACING

**LEGEND**  
 TELEVISION INSPECTION OF SEWER

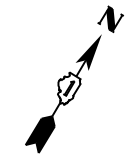


**LEGEND**  
 TELEVISION INSPECTION OF SEWER

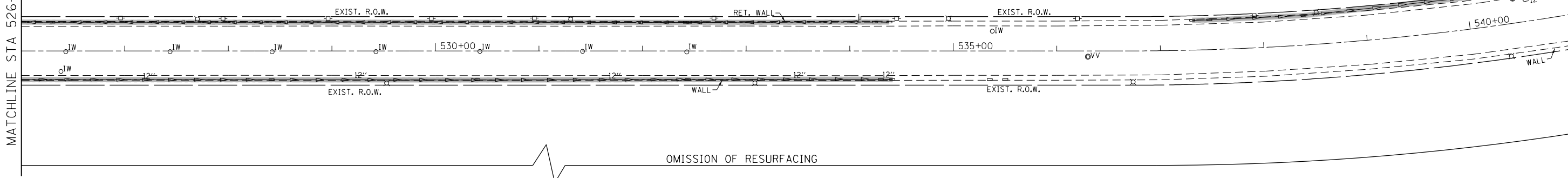
FILE NAME = c:\pwwork\pwwork\windot\l0254883\VP13591\sh1:gennote.dgn	USER NAME = windot	DESIGNED -	REVISED -	<b>STATE OF ILLINOIS DEPARTMENT OF TRANSPORTATION</b>	<b>EXISTING AND PROPOSED DRAINAGE PLAN JOLIET ROAD AT 55th STREET</b>			F.A.U. RTE.	SECTION	COUNTY	TOTAL SHEETS	SHEET NO.
PLOT SCALE = 100.0026' / in.	CHECKED -	REVISED -	REVISED -		SCALE: 1"=50'	SHEET NO. 1 OF 2 SHEETS	STA. 496+00.00 TO STA. 526+00.00	3562	430Y-N	COOK	12	9
PLOT DATE = 8/24/2012	DATE -	REVISED -	REVISED -		CONTRACT NO. 60T48							
ILLINOIS FED. AID PROJECT												

MATCHLINE STA 526+00

JOLIET RD.



MATCHLINE STA 541+00



**LEGEND**

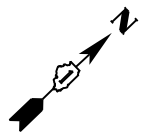
TELEVISION INSPECTION OF SEWER

DRAINAGE STRUCTURES TO BE CLEANED

IMPROVEMENT LIMIT  
STA 544+00

IMPROVEMENT LIMIT  
STA 297+00  
55th ST.

IMPROVEMENT LIMIT  
STA 551+00

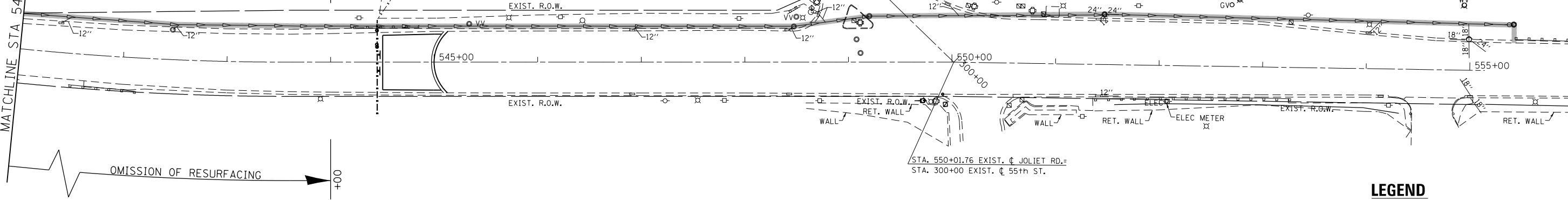


MATCHLINE STA 541+00

JOLIET RD.

EXIST. R.O.W.

EXIST. R.O.W.



**LEGEND**

TELEVISION INSPECTION OF SEWER

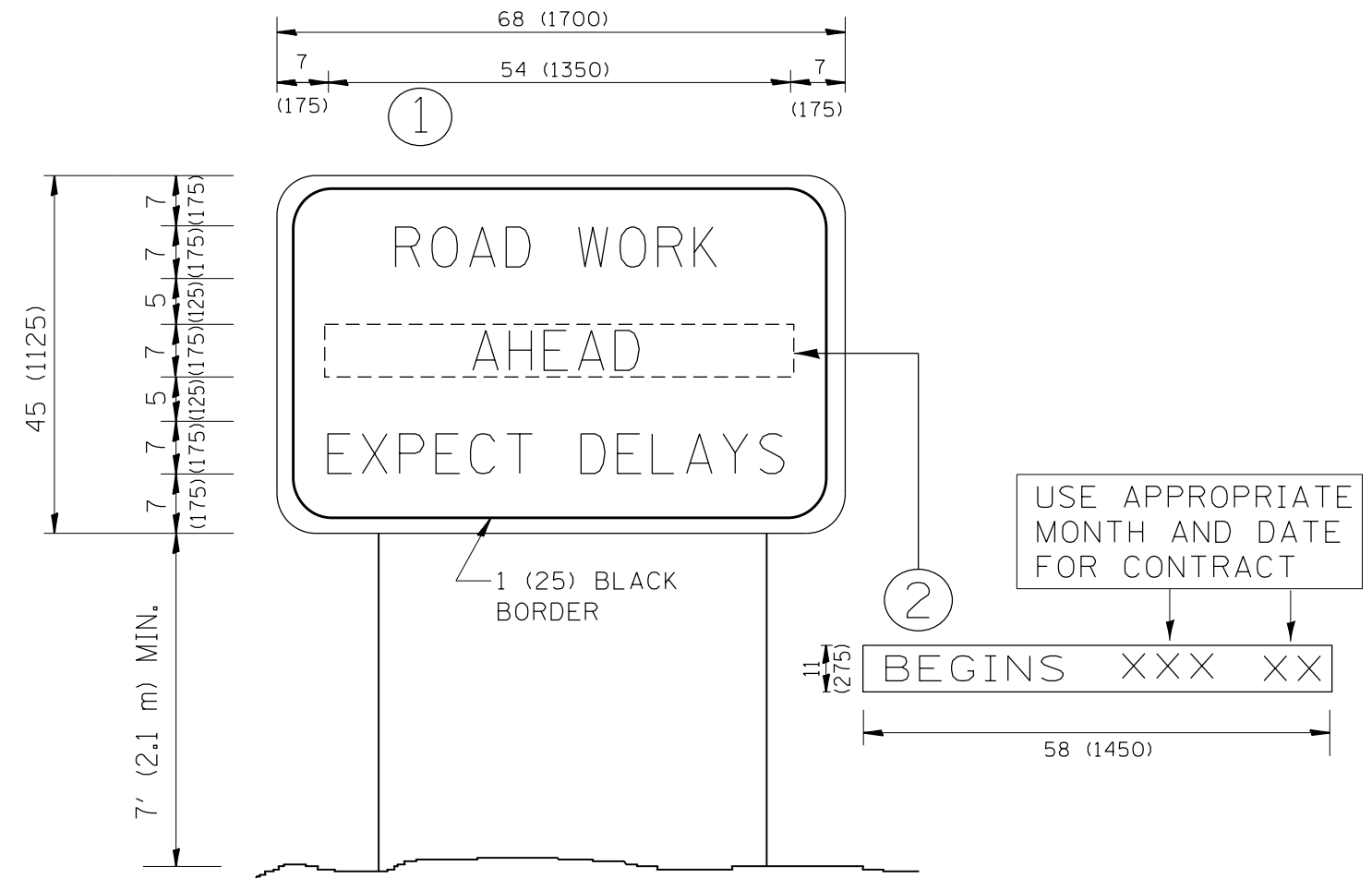
FILE NAME =	USER NAME = windot	DESIGNED -	REVISED -
ct:\pwwork\pwindot\windot\d0254883\PI3591\shd-gennote.dgn		DRAWN -	REVISED -
	PLOT SCALE = 100.0026' / in.	CHECKED -	REVISED -
	PLOT DATE = 8/24/2012	DATE -	REVISED -

STATE OF ILLINOIS  
DEPARTMENT OF TRANSPORTATION

EXISTING AND PROPOSED DRAINAGE PLAN  
JOLIET ROAD AT 55th STREET

SCALE: 1"=50' SHEET NO. 2 OF 2 SHEETS STA. 526+00.00 TO STA. 555+00.00

F.A.U. RTE.	SECTION	COUNTY	TOTAL SHEETS	SHEET NO.
3562	430Y-N	COOK	12	10
CONTRACT NO. 60T48				
ILLINOIS FED. AID PROJECT				

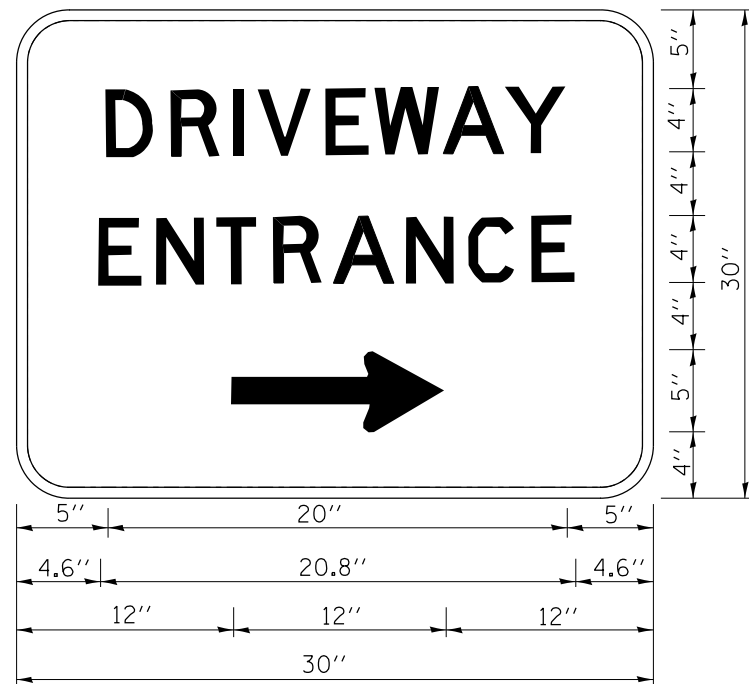


**NOTES:**

1. USE BLACK LETTERING ON ORANGE BACKGROUND.
2. ERECT SIGNS IN ADVANCE OF THE LOCATION FOR THE "ROAD CONSTRUCTION AHEAD" SIGN AT LOCATIONS AS DIRECTED BY THE ENGINEER.
3. ERECT SIGN ① WITH INSTALLED PANEL ② ONE WEEK PRIOR TO THE START OF CONSTRUCTION.
4. REMOVE PANEL ② SOON AFTER THE START OF CONSTRUCTION.
5. SEE SPECIAL PROVISION FOR "TEMPORARY INFORMATION SIGNING" FOR ADDITIONAL INFORMATION.
6. ONE SIGN ASSEMBLY EQUALS 25.70 SQ. FT. (2.3 SQ. M.)
7. SHALL BE PAID FOR AS TEMPORARY INFORMATION SIGNING.

ALL DIMENSIONS ARE IN INCHES (MILLIMETERS) UNLESS OTHERWISE SHOWN.

FILE NAME =	USER NAME = windot	DESIGNED -	REVISED - R. MIRS 09-15-97	<b>STATE OF ILLINOIS DEPARTMENT OF TRANSPORTATION</b>	<b>ARTERIAL ROAD INFORMATION SIGN</b>	F.A.U. RTE.	SECTION	COUNTY	TOTAL SHEETS	SHEET NO.
et:\pw_work\windot\0254883\Dist5.dgn	DRAWN -	REVISED - R. MIRS 12-11-97	3562			430Y-N	COOK	12	11	
PLOT SCALE = 100.0000' / in.	CHECKED -	REVISED - T. RAMMACHER 02-02-99	<b>TC-22</b>			<b>CONTRACT NO. 60T48</b>				
PLOT DATE = 8/24/2012	DATE -	REVISED - C. JUCIUS 01-31-07	SCALE: NONE			SHEET NO. 1 OF 1 SHEETS	STA.	TO STA.	FED. ROAD DIST. NO. 1   ILLINOIS FED. AID PROJECT	



3.0" RADIUS, 0.5" BORDER, WHITE ON GREEN; REFLECTORIZED  
 "DRIVEWAY" D; "ENTRANCE" D; STANDARD ARROW CUSTOM 12.0" x 5.0"

**NOTES:**

1. HALF OF THE SIGNS WILL REQUIRE A LEFT HAND FACING ARROW.
2. TWO SIGNS SHALL BE USED AT EACH COMMERCIAL ENTRANCE  
 PLACED BACK-TO-BACK; ONE WITH A RIGHT HAND ARROW (SHOWN)  
 SHALL BE PLACED ON THE NEAR RIGHT SIDE THE DRIVEWAY  
 AND ONE WITH A LEFT HAND ARROW SHALL BE PLACED ON THE  
 FAR LEFT SIDE OF THE DRIVEWAY.
3. SIGNS TO BE PAID FOR AS ITEM "TEMPORARY INFORMATION SIGNING".

FILE NAME =	USER NAME = wjndot	DESIGNED -	REVISED - C. JUCIUS 02-15-07
et:\pw\work\p\dot\w\ndot\d0254883\Dist5.dgn		DRAWN -	REVISED -
	PLOT SCALE = 100.0000' / in.	CHECKED -	REVISED -
	PLOT DATE = 8/24/2012	DATE -	REVISED -

**STATE OF ILLINOIS  
 DEPARTMENT OF TRANSPORTATION**

**DRIVEWAY ENTRANCE SIGNING**

SCALE: NONE SHEET NO. 1 OF 1 SHEETS STA. TO STA.

F.A.U. RTE.	SECTION	COUNTY	TOTAL SHEETS	SHEET NO.
3562	430Y-N	COOK	12	12
<b>TC-26</b>			<b>CONTRACT NO. 60T48</b>	
FED. ROAD DIST. NO. 1 ILLINOIS FED. AID PROJECT				