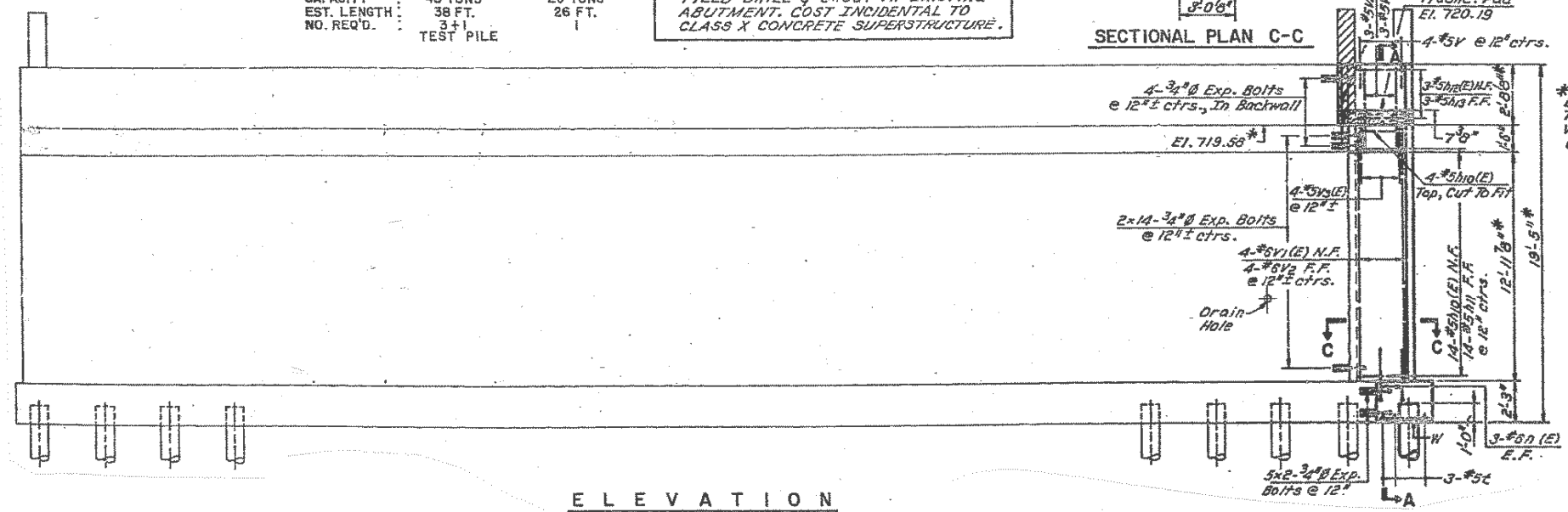
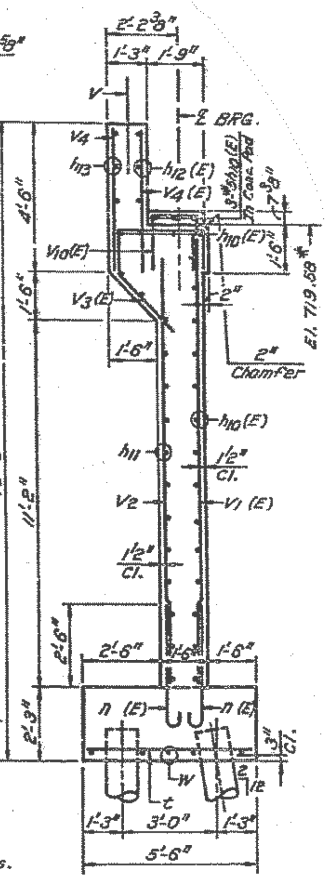
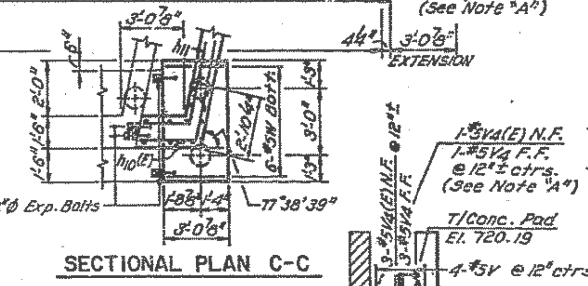


NOTES FOR SHT'S. S17 & S18:
 EXPOSED REINFORCEMENT SHALL BE CLEANED AND INCORPORATED INTO CONCRETE PATCH OR NEW REPLACEMENT REINFORCEMENT ADDED AND SPLICED WITH THE EXISTING RETAINED REINFORCEMENT.
 FILL HOLES AT THE ROD ENDS WHERE PATCH HAS SPALLED OFF AND REMOVE LOOSE PATCHES.
 FILL HOLES AS SPECIFIED FOR REPAIR OF CONCRETE STRUCTURES.

PILE DATA

TYPE	ABUTMENT	APPROACH
CAPACITY	CONCRETE	BENT
EST. LENGTH	45 TONS	CONCRETE
NO. REQ'D.	38 FT.	25 TONS
	3+1	26 FT.
	TEST PILE	1

NOTE "A"
 BARS V₄, V₄(E) AND V₁₀(E) TO BE FIELD DRILL & GROUT AT EXISTING ABUTMENT. COST INCIDENTAL TO CLASS X CONCRETE SUPERSTRUCTURE.



* Dimensions & Elevation To Match Exist. & To Be Verified By The Contractor.

FOR INFORMATION ONLY

FILE NAME =	USER NAME = gorengautab	DESIGNED -	REVISED -	STATE OF ILLINOIS DEPARTMENT OF TRANSPORTATION	LOCATION NO 2. I-290AT BIESTERFIELD RD (SN 016-0960) WEST ABUTMENT	F.A.I. RTE.	SECTION	TOTAL SHEETS	SHEET NO.
et:\pw\work\p1dot\gorengautab\d0101671\022-0091.dgn	DRAWN -	REVISED -	* 2012-026 BR			COOK & DuPAGE	29	18	
PLOT SCALE = 100.0000' / in.	CHECKED -	REVISED -	CONTRACT NO. 60T70						
\$MODELNAME\$	DATE -	REVISED -	ILLINOIS FED. AID PROJECT						

* FAI 290 & FAP 342

SCALE: SHEET 7 OF 9 SHEETS STA. TO STA.