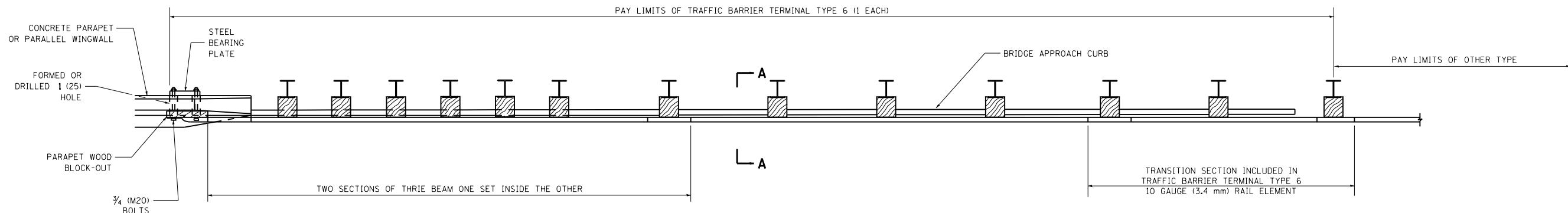
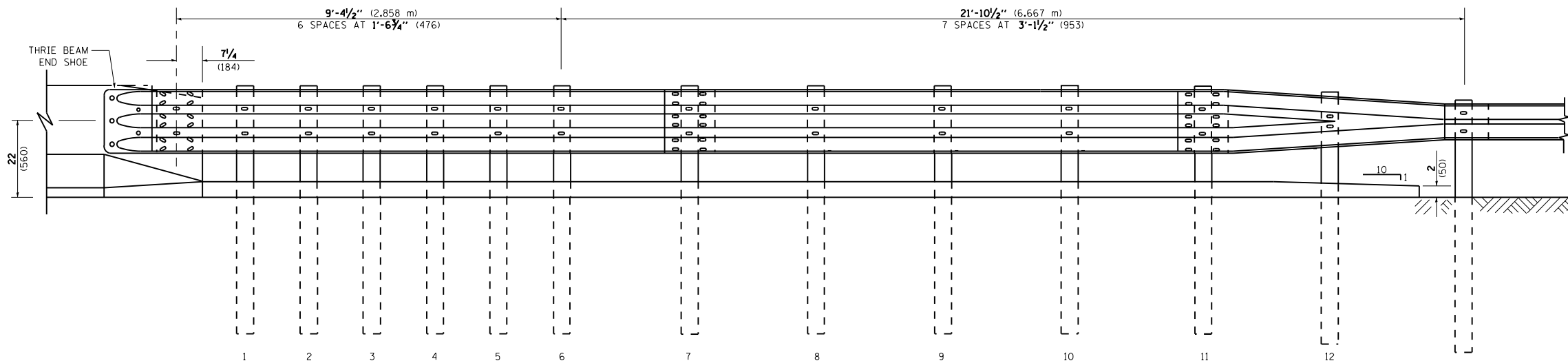


PARAPET OR WINGWALL

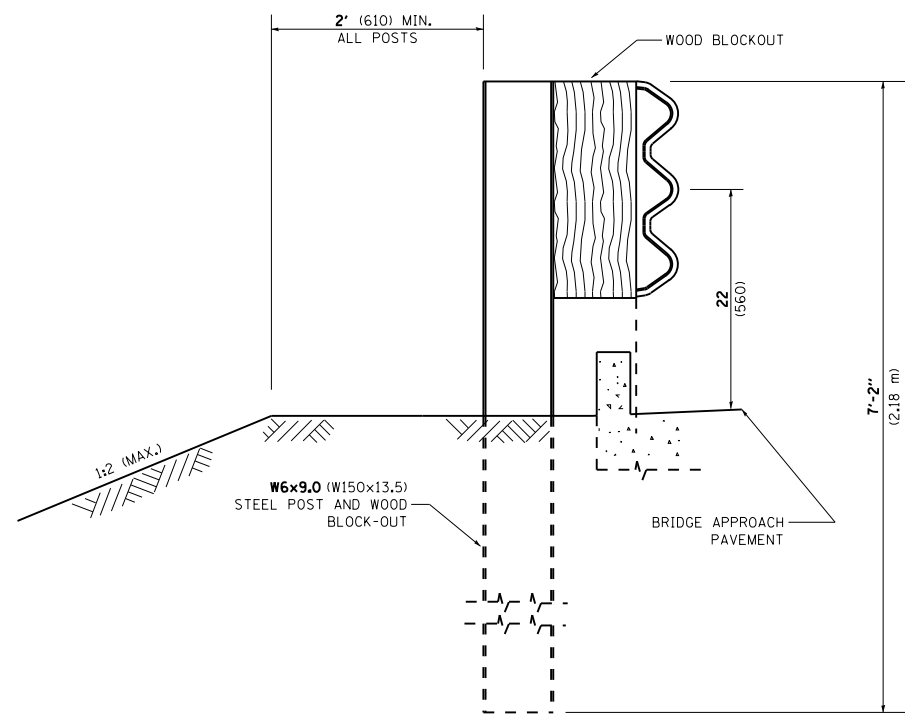
PAY LIMITS OF TRAFFIC BARRIER TERMINAL TYPE 6 (1 EACH)



PLAN



ELEVATION



SECTION A-A

GENERAL NOTES

- TO BE USED WHEN CONNECTING TO EXISTING GUARD RAILING PRIOR TO THE MIDWEST GUARDRAIL SYSTEM.
- SEE STANDARD 630001 FOR DETAILS OF GUARDRAIL NOT SHOWN.
- THRIE BEAM RAIL SHALL BE BOLTED TO BLOCK-OUT AT ALL POSTS.
- SEE STANDARD 420401 FOR DETAILS OF BRIDGE APPROACH PAVEMENT.
- ALL SLOPE RATIOS ARE EXPRESSED AS UNITS OF VERTICAL DISPLACEMENT TO UNITS OF HORIZONTAL DISPLACEMENT (V:H).
- ALL DIMENSIONS ARE IN INCHES (MILLIMETERS) UNLESS OTHERWISE SHOWN.

FILE NAME =	USER NAME = pyrzanowskirb	DESIGNED -	REVISED - STATE STANDARD;	STATE OF ILLINOIS DEPARTMENT OF TRANSPORTATION	TYPE 6 TERMINAL FOR USE WITH 21" HIGH SPBGR		F.A. RTÉ.	SECTION	COUNTY	TOTAL SHEETS	SHEET NO.	
et:\pw\work\p1dot\pyrzanowskirb\d030698	ND142212-sht-plan.dgn	DRAWN -	631031-05 - 02/19/2008		SCALE: NONE	SHEET NO. 1 OF 3 SHEETS	STA.	TO STA.	VAR.	2012-021 GRR	VARIOUS	22 19
	PLOT SCALE = 100.0000 ' / in.	CHECKED -	REVISED -						BM 22		CONTRACT NO. 60T73	
	PLOT DATE = 7/26/2012	DATE -	REVISED -		FED. ROAD DIST. NO. 1 ILLINOIS FED. AID PROJECT							