

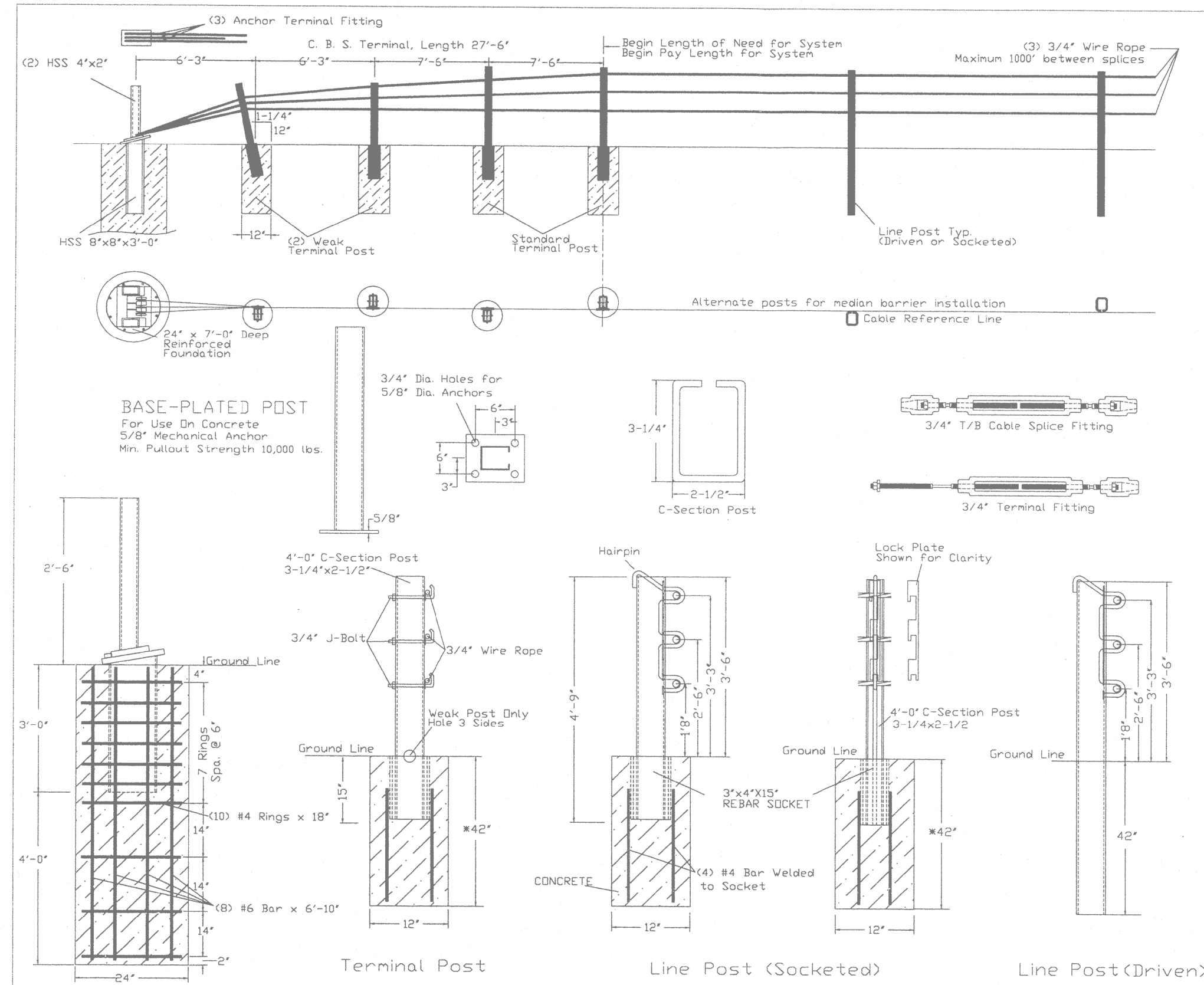
**GENERAL NOTES**

- For additional information contact Gibraltar, Inc. at 1-800-495-8957 or see the manufacture's product manual.
- All concrete shall be minimum 2500 PSI.
- Alternate Post for bi-directional traffic flow. If installed for traffic in one direction install cables on traffic side of posts.
- The Cable Barrier System shall be installed on shoulders or on medians with slopes of 6:1 or flatter. If installed on slopes steeper than 6:1 up to 4:1 the TL-4 system performs as a TL-3 and Gibraltar must be contacted for various guidelines related to placement.
- The Cable Barrier System is accepted by the FHWA Test Level - 4
- See the MUTCD for proper "Barrier" delineation
- Rock Clause: Where solid rock is encountered:
  - For socketed post, continue digging 12" diameter, 15" deep into rock or the required plan depth, whichever comes first.
  - For driven post, core drill a 4" diameter hole 18" deep into rock or the required plan depth, whichever comes first.
  - For Anchor post, continue digging 24" diameter, 30" deep into rock or the required plan depth, whichever comes first.
- The Gibraltar cable barrier system shall be installed in NCHRP Report 350 standard compacted soil. Soil must be well drained.
- Every component to be galvanized.

-10F	8000
0	7600
10	7200
20	6800
30	6400
40	6000
50	5600
60	5200
70	4800
80	4400
90	4000
100	3600
110	3200

Allowable Deviation from Chart +/- 10%

Deflection	Post Spacing
9'3"	30.FT
9'	28.FT
8'	20.FT
7'	12.FT
6'8"	10.FT



**FOR INFORMATION ONLY**

**GIBRALTAR**  
 320 Southland Road  
 Burnet, Texas 78611  
 1-800-495-8957

**Cable Barrier System**  
 Patent Pending

SYSTEM: TL-4    SCALE: NTS    DRAFTERS: EJ&TJ    DATE: 09/13/07