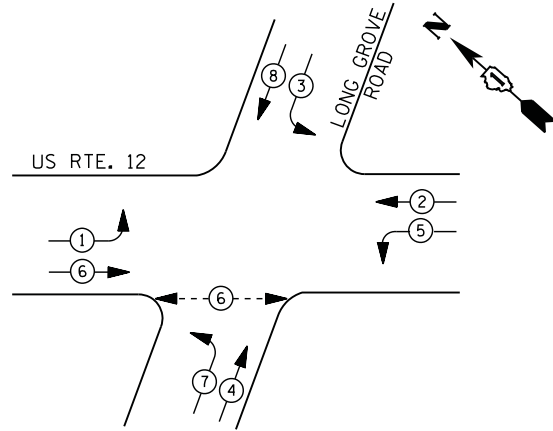
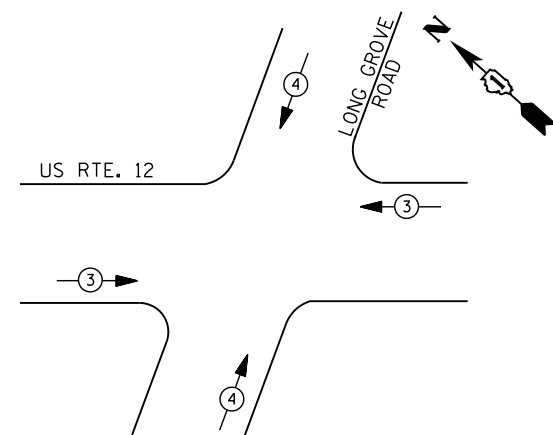


**CONTROLLER SEQUENCE**



**EXISTING AND PROPOSED PHASE DESIGNATION DIAGRAM**



**EMERGENCY VEHICLE PREEMPTION SEQUENCE**

EMERGENCY VEHICLE PREEMPTORS		
EMERGENCY VEHICLE PREEMPTOR	3	4
MOVEMENT	← →	↔

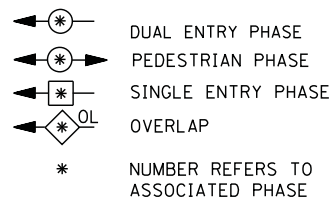
**I. D. O. T. TRAFFIC SIGNAL INSTALLATION ELECTRICAL SERVICE REQUIREMENTS**

TYPE	NO. LAMPS	WATTAGE		% OPERATIONS	TOTAL WATTAGE
		INCAND.	LED		
SIGNAL (RED)	14	135	17	0.50	119
(YELLOW)	14	135	25	0.25	88
(GREEN)	14	135	15	0.25	53
ARROW	16	135	12	0.10	19
PED. SIGNAL	2	90	25	1.00	50
CONTROLLER	1	100	100	1.00	100
ILLUM. SIGN		252	25	0.05	--
VIDEO SYSTEM	1	150	-	1.00	150
FLASHER LED					
TOTAL =					579

ENERGY COSTS- **BILLED TO: IDOT DISTRICT 1**  
 201 WEST CENTER COURT  
 SCHAUMBURG, IL 60196-1096

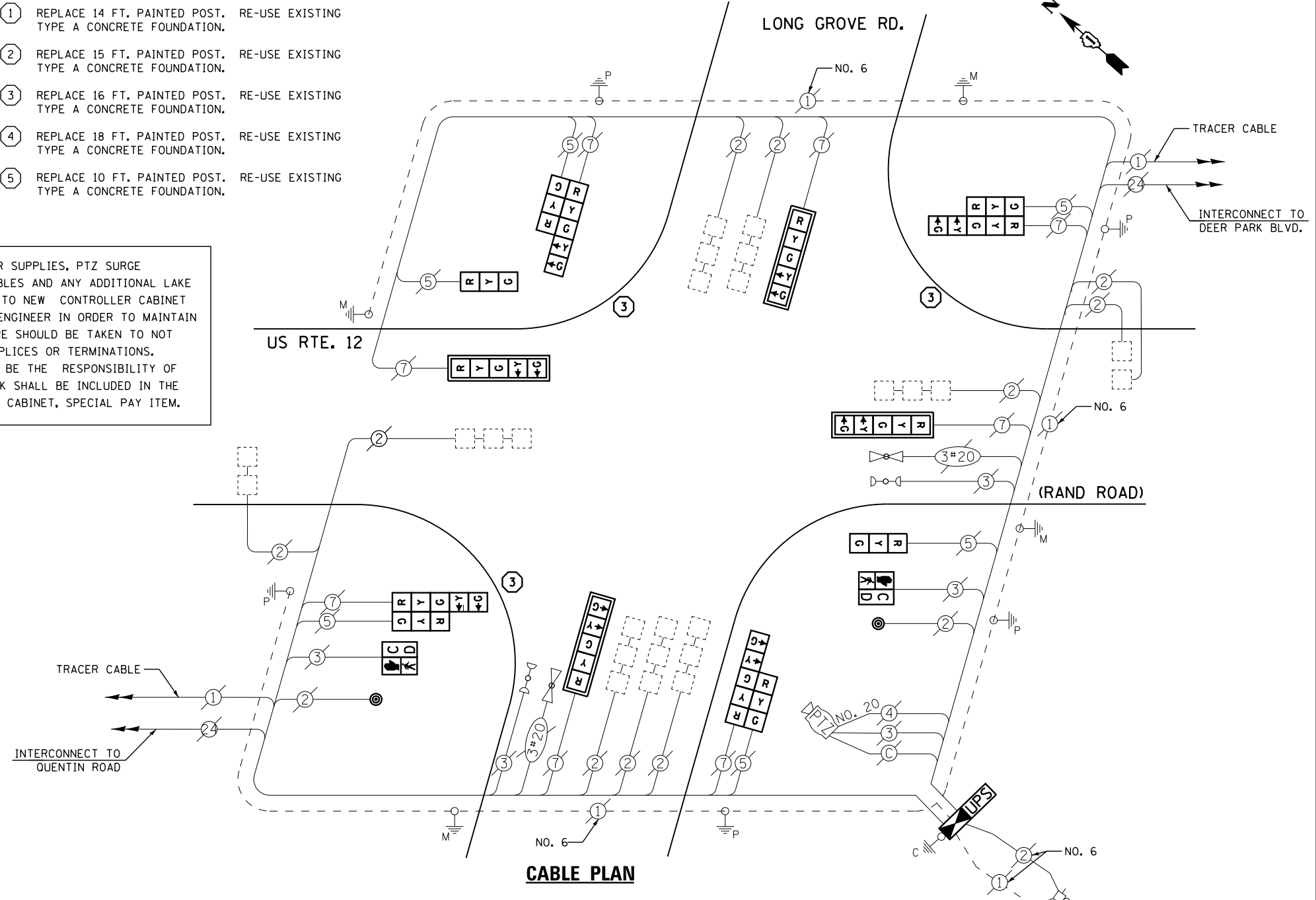
ENERGY SUPPLY - CONTACT **DAVE SCHACHT**  
 PHONE 630-437-2129  
 COMMONWEALTH EDISON

**LEGEND**



- ① REPLACE 14 FT. PAINTED POST, TYPE A CONCRETE FOUNDATION. RE-USE EXISTING
- ② REPLACE 15 FT. PAINTED POST, TYPE A CONCRETE FOUNDATION. RE-USE EXISTING
- ③ REPLACE 16 FT. PAINTED POST, TYPE A CONCRETE FOUNDATION. RE-USE EXISTING
- ④ REPLACE 18 FT. PAINTED POST, TYPE A CONCRETE FOUNDATION. RE-USE EXISTING
- ⑤ REPLACE 10 FT. PAINTED POST, TYPE A CONCRETE FOUNDATION. RE-USE EXISTING

EXISTING FIBER OPTIC SPLICE BOX, POWER SUPPLIES, PTZ SURGE PROTECTORS, ALL NECESSARY WIRING/CABLES AND ANY ADDITIONAL LAKE COUNTY EQUIPMENT SHALL BE RELOCATED TO NEW CONTROLLER CABINET AS NECESSARY, OR AS DIRECTED BY THE ENGINEER IN ORDER TO MAINTAIN THE EXISTING INTERCONNECT SYSTEM. CARE SHOULD BE TAKEN TO NOT DAMAGE EXISTING FIBER OPTIC CABLE, SPLICES OR TERMINATIONS. REPAIR OF ANY DAMAGED EQUIPMENT WILL BE THE RESPONSIBILITY OF THE CONTRACTOR. THE COST OF THIS WORK SHALL BE INCLUDED IN THE FULL-ACTUATED CONTROLLER AND TYPE IV CABINET, SPECIAL PAY ITEM.



**CABLE PLAN**

THE TRAFFIC SIGNAL CONTROL EQUIPMENT FOR THIS PROJECT SHALL BE "ECONOLITE" TO MATCH THE EXISTING ADJACENT SYSTEM

**SCHEDULE OF QUANTITIES**

QUANTITY	UNIT	ITEM
1	EACH	MAINTENANCE OF EXISTING TRAFFIC SIGNAL INSTALLATION
1	EACH	TRANSCEIVER - FIBER OPTIC
3	EACH	TRAFFIC SIGNAL POST, GALVANIZED STEEL 16 FT.
2	EACH	SIGNAL HEAD, LED, 1-FACE, 3-SECTION, BRACKET MOUNTED
4	EACH	SIGNAL HEAD, LED, 1-FACE, 5-SECTION, MAST-ARM MOUNTED
4	EACH	SIGNAL HEAD, LED, 2-FACE, 1-3 SECTION, 1-5 SECTION, BRACKET MOUNTED
2	EACH	PEDESTRIAN SIGNAL HEAD, LED, 1-FACE, BRACKET MOUNTED WITH COUNTDOWN TIMER
4	EACH	TRAFFIC SIGNAL BACKPLATE, LOUVERED, ALUMINUM
10	EACH	INDUCTIVE LOOP DETECTOR
2	EACH	PEDESTRIAN PUSH-BUTTON
* 1	EACH	RELOCATE EXISTING EMERGENCY VEHICLE PRIORITY SYSTEM, PHASING UNIT
1	EACH	REMOVE EXISTING TRAFFIC SIGNAL EQUIPMENT
1	EACH	FULL-ACTUATED CONTROLLER AND TYPE IV CABINET, SPECIAL
1	EACH	UNINTERRUPTIBLE POWER SUPPLY, SPECIAL
1	EACH	RELOCATE EXISTING SWITCH (SPECIAL)
1	EACH	RELOCATE EXISTING VIDEO ENCODER, SPECIAL
* 100% COST TO DEER PARK		

**REMOVAL OF EXISTING TRAFFIC SIGNAL EQUIPMENT**

THE FOLLOWING ITEMS SHALL BE REMOVED BY THE CONTRACTOR AND SHALL BE DISPOSED OF BY THEM OUTSIDE THE RIGHT-OF-WAY AT THEIR EXPENSE. THE SALVAGE VALUE OF THE REMOVED EQUIPMENT SHALL BE REFLECTED IN THE CONTRACT BID PRICE.

2	EACH	SIGNAL HEAD, 3 - SECTION
4	EACH	SIGNAL HEAD, 5 - SECTION
4	EACH	SIGNAL HEAD, 2 - FACE, 1-3 SECTION, 1-5-SECTION
2	EACH	PEDESTRIAN SIGNAL HEAD
2	EACH	PEDESTRIAN PUSH-BUTTON
4	EACH	TRAFFIC SIGNAL BACKPLATE
3	EACH	SIGNAL POST
1	EACH	CONTROLLER AND CABINET (COMPLETE)

FILE NAME =	USER NAME = \$USER\$	DESIGNED - DW	REVISED -
N:\Projects\3\12004\DesignCAD\Sheet Files\12-003 Sheets SW Lake Co\0965_CAB_LAKE.dgn		DRAWN - JDH	REVISED -
	PLOT SCALE = \$SCALE\$	CHECKED - KMM	REVISED -
	PLOT DATE = 8/23/2012	DATE -	REVISED -

**STATE OF ILLINOIS DEPARTMENT OF TRANSPORTATION**

**US ROUTE 12 (RAND ROAD) AT LONG GROVE ROAD**  
 SCHEDULE OF QUANTITIES, CABLE PLAN, PHASE DESIGNATION DIAGRAM AND EMERGENCY VEHICLE PREEMPTION SEQUENCE

SCALE: N.T.S. SHEET NO. OF SHEETS STA. TO STA.

F.A. RTE.	SECTION	COUNTY	TOTAL SHEETS	SHEET NO.
	2012-039TS	LAKE	84	20
CONTRACT NO. 60T84				
ILLINOIS FED. AID PROJECT				

TS# 965  
 DEER PARK