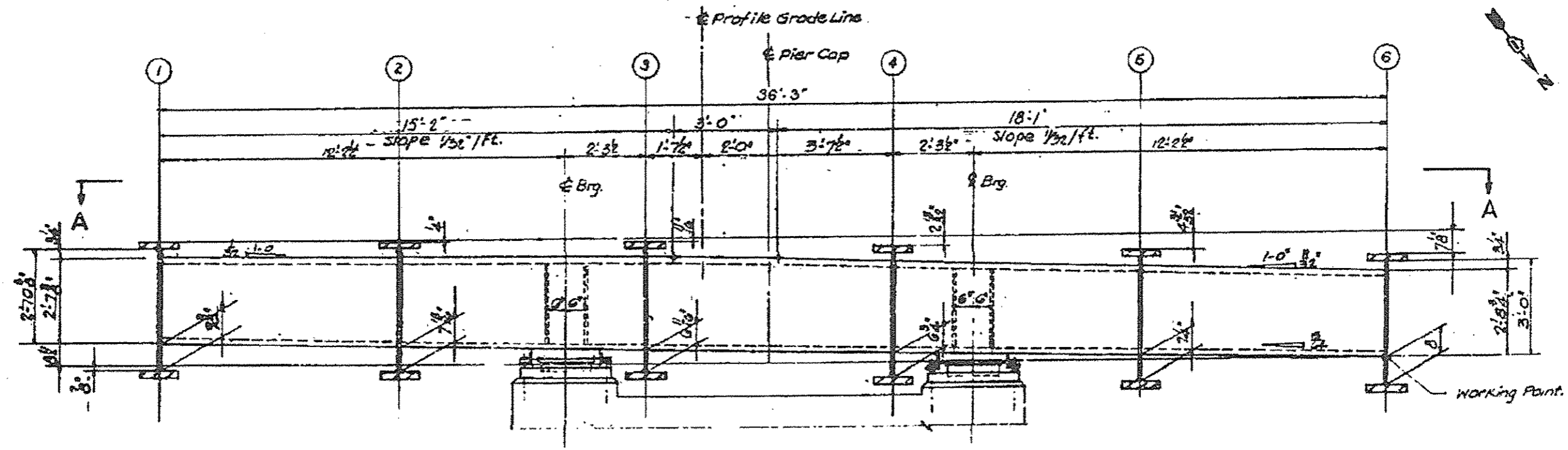


CROSS GIRDER ELEVATION
OVER PIERS 1-2-3-5-7-8-10-11-13-14-16-17-19



CROSS GIRDER ELEVATION
OVER PIER 20

FILE NAME c:\pwwork\swidoc\adward\108310773\10189	USER NAME adward	DESIGNED ---	REVISED ---	STATE OF ILLINOIS DEPARTMENT OF TRANSPORTATION	CROSS GIRDER ELEVATION PLAN SN 016-2467; US 122045 OVER DES PLAINES RIVER & SANTA FE DR	F.A.P. RTE. 330	SECTION 2012-054_BP	COUNTY COOK	TOTAL SHEETS 75	SHEET NO. 68
	PLOT SCALE 1/8" = 1'-0"	DATE 9/28/2012	CHECKED ---			REVISED ---	SCALE SHEET 25 OF 30 SHEETS	STA. ---	TO STA. ---	CONTRACT NO. 60456 ILLINOIS FED. AID PROJECT