

11-9-12 LETTING ITEM 070

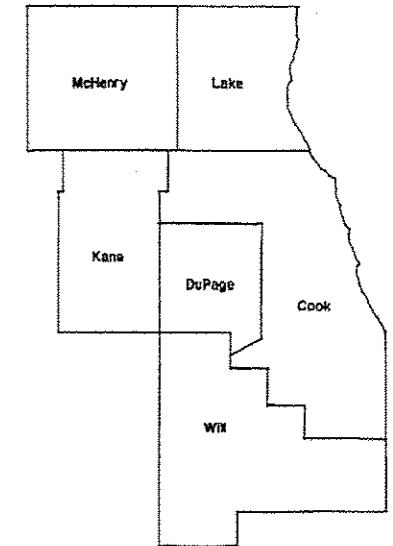
ROUTE	SECTION	COUNTY	TOTAL SHEETS	SHEET NUMBER
VARIOUS	2012-057 DTR	VARIOUS	6	1

STATE OF ILLINOIS  
 DEPARTMENT OF TRANSPORTATION  
 DIVISION OF HIGHWAYS  
 DISTRICT ONE

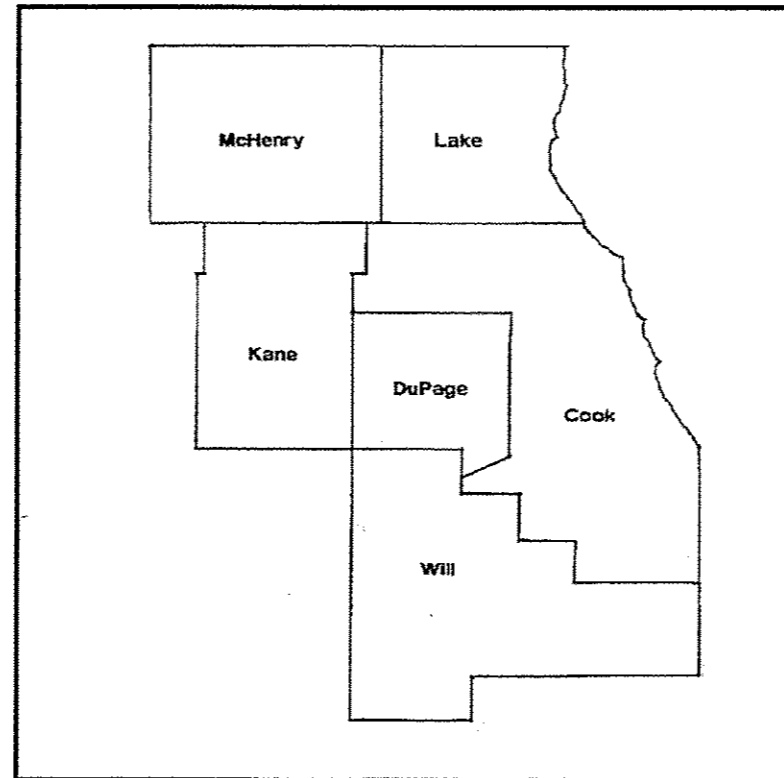
**PROPOSED HIGHWAY PLANS**

ROUTE: VARIOUS  
 SECTION 2012-057DTR  
 DEAD TREE REMOVAL  
 VARIOUS COUNTIES  
 C-91-044-13

CONTRACT 60V66  
 D-91-044-13



LOCATION OF IMPROVEMENT INDICATED THUS:



IMPROVEMENT IS IN VARIOUS  
 LOCATIONS WITHIN DISTRICT  
 ONE

DISTRICT ONE BUREAU OF MAINTENANCE: J. STUMPNER  
 MAINTENANCE LANDSCAPE DESIGNER: R. WANNER / T. JACKSON (847) 705-4171

CONTRACT 60V66

STATE OF ILLINOIS  
 DEPARTMENT OF TRANSPORTATION  
 DIVISION OF HIGHWAYS

SUBMITTED: August 29 2012  
John Fortmann  
 DEPUTY DIRECTOR OF HIGHWAYS, REGION ENGINEER

October 5 2012  
John D. Baranzelli  
 ENGINEER OF DESIGN AND ENVIRONMENT

October 5 2012  
William R. Freyler  
 DIRECTOR OF HIGHWAYS, CHIEF ENGINEER

**PRINTED BY THE AUTHORITY  
 OF THE STATE OF ILLINOIS**

J.U.L.I.E.: JOINT UTILITY LOCATION  
 INFORMATION FOR EXCAVATION  
 (800) 892-0123 OR 811

ROUTE	SECTION	COUNTY	TOTAL SHEETS	SHEET NUMBER
VARIOUS	2012-057DTR	VARIOUS	6	2

CONTRACT 60V66

**INDEX OF SHEETS**

- 1) COVER SHEET
- 2) INDEX OF SHEETS, STATE STANDARDS, GENERAL NOTES
- 3) SUMMARY OF QUANTITIES
- 4) SAMPLE STANDARD WORK ORDER
- 5) SAMPLE EXPEDITED WORK ORDER
- 6) TC-17 TRAFFIC CONTROL DETAIL FOR FREEWAY SHOULDER CLOSURES AND PARTIAL RAMP CLOSURES

**STATE STANDARDS**

701001-02 701006-03 701101-02 701106-02 701201-04

701301-04 701421-04 701501-06 701601-07 701901-02

**GENERAL NOTES**

TREE REMOVAL, ACRE includes removal of trees, shrubs, bushes, saplings, logs, other vegetation, and stumps of a diameter less than 6 inches. All trees and other stumps within the Right of way shall be removed to a depth of not less than **6 inches** below the elevation of the subgrade, the finished earth surface, or the ground line.

TREE REMOVAL 6-15 & over 15 inches will not require removal of stumps.

ILLINOIS DEPARTMENT OF TRANSPORTATION
INDEX OF SHEETS
DEAD TREE REMOVAL

ROUTE	SECTION	COUNTY	TOTAL SHEETS	SHEET NUMBER
VARIOUS	2012-057 DTR	VARIOUS	6	3

CONTRACT 60V66

**SUMMARY OF QUANTITIES**

*URBAN  
100% STATE*

*0044*

PAY ITEM	DESCRIPTION	UNIT	CONTRACT MAINT FUND	TOTAL
20100110	TREE REMOVAL (6 TO 15 UNITS DIAMETER)	UNIT	4000	4000
20100210	TREE REMOVAL (OVER 15 UNITS DIAMETER)	UNIT	5000	5000
20100500	TREE REMOVAL, ACRES	ACRE	4	4
20101300	TREE PRUNING (1 TO 10 INCH DIAMETER)	EACH	10	10
20101350	TREE PRUNING (OVER 10 INCH DIAMETER)	EACH	10	10
67100100	MOBILIZATION	L SUM	1	1
X0325222	WEED CONTROL, BASAL TREATMENT	GALLON	25	25
X2010100	TREE LIMB REMOVAL (4 TO 10 INCHES DIAMETER)	EACH	60	60
X2010200	TREE LIMB REMOVAL (OVER 10 INCHES DIAMETER)	EACH	60	60
X2010300	TREE REMOVAL (UNDER 6 UNITS DIAMETER)	UNIT	200	200
X2010400	STUMP REMOVAL ONLY	UNIT	400	400
Z0064800	SELECTIVE CLEARING	UNIT	20	20

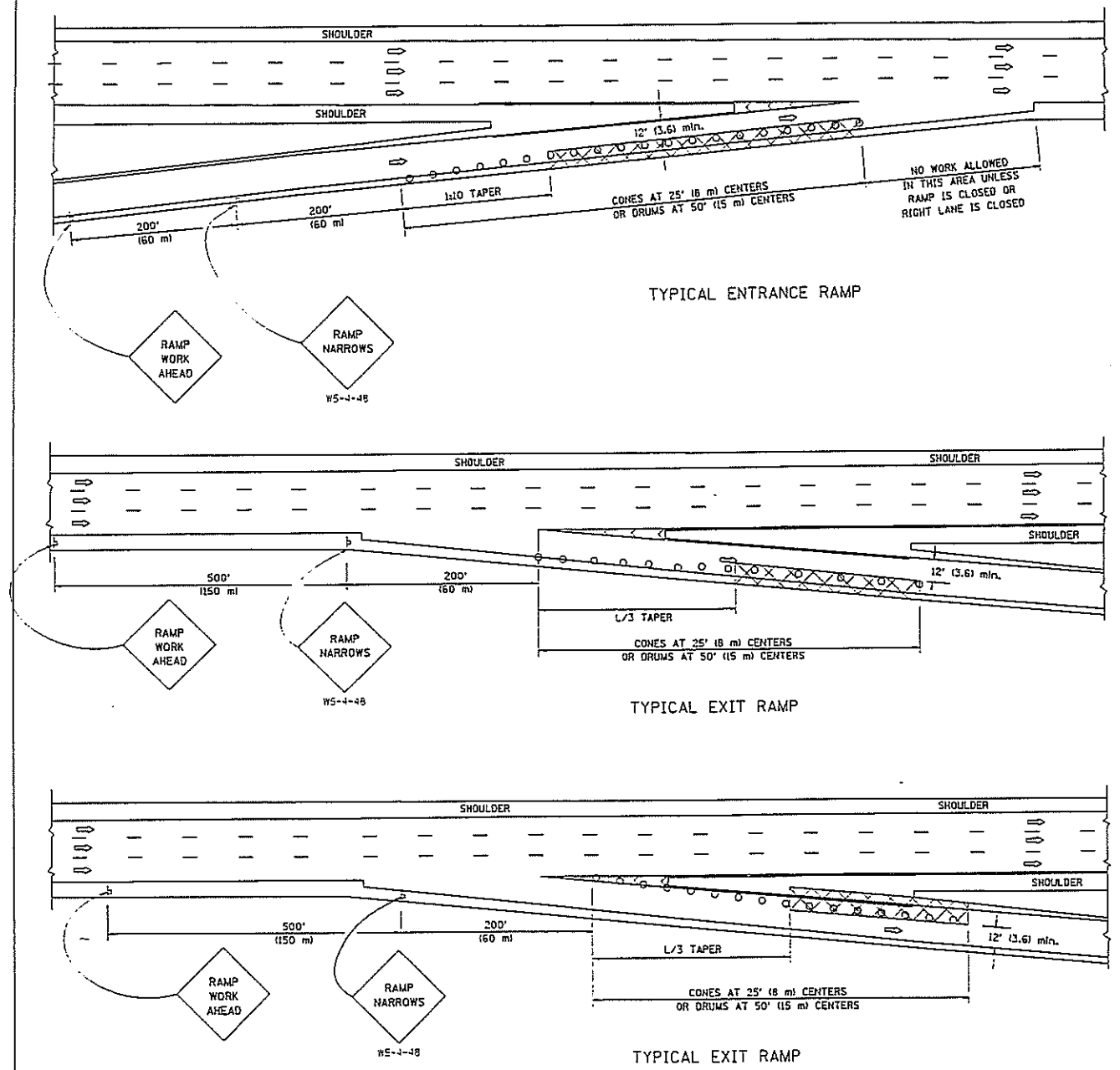
ILLINOIS DEPARTMENT OF TRANSPORTATION

**SUMMARY OF QUANTITIES**

DEAD TREE REMOVAL



PARTIAL RAMP CLOSURE DETAILS



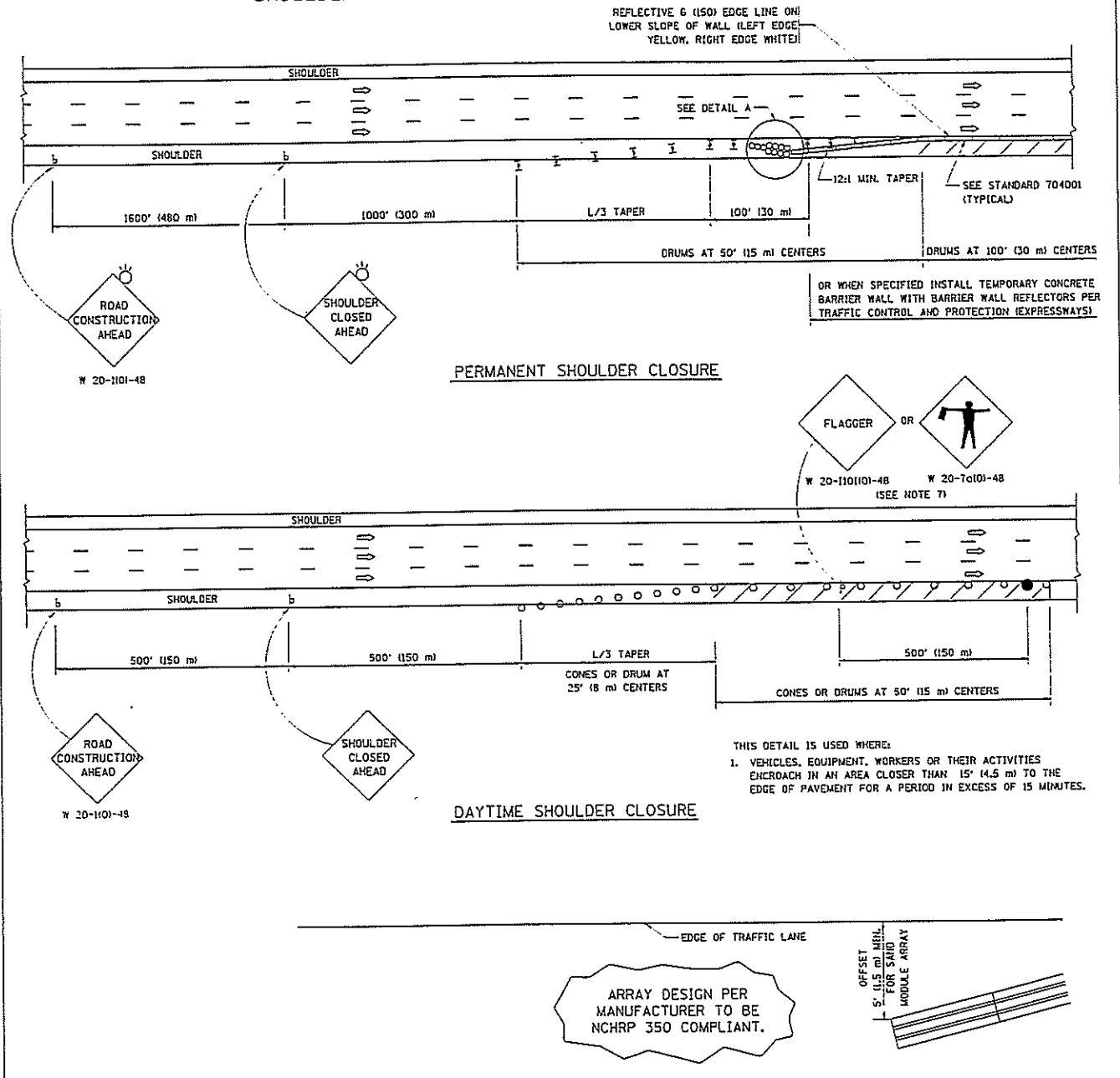
SYMBOLS

- ACTIVE WORK AREA
- SIGN ON PORTABLE OR PERMANENT SUPPORT
- FLAGGER WITH CONTROL SIGN
- TYPE II BARRICADE, DRUM OR VERTICAL BARRICADE WITH STEADY BURN MONO-DIRECTIONAL LIGHT
- CONE, DRUM OR BARRICADE

GENERAL NOTES

1. THE "L" DISTANCE EQUALS:  
 SPEED LIMIT                      FORMULAS  
 45 mph (80 km/h)                  METRIC    ENGLISH  
 OR GREATER:                      L=0.65(W/S)    L=(W/S)<sup>2</sup>  
 W = WIDTH OF OFFSET IN FEET (METERS)  
 S = NORMAL POSTED SPEED MPH (KM/H)
2. PLASTIC DRUMS WITH HIGH PERFORMANCE REFLECTIVE SHEETING AND STEADY BURNING LIGHTS ARE REQUIRED FOR ALL NIGHTTIME CLOSURES.
3. ALL SIGNS SHALL BE POST MOUNTED IF THE CLOSURE TIME EXCEEDS FOUR DAYS.
4. FLASHING LIGHTS SHALL BE USED DURING THE HOURS OF DARKNESS AND SHALL BE INSTALLED ABOVE THE FIRST TWO SETS OF SIGNS.

SHOULDER CLOSURE DETAILS



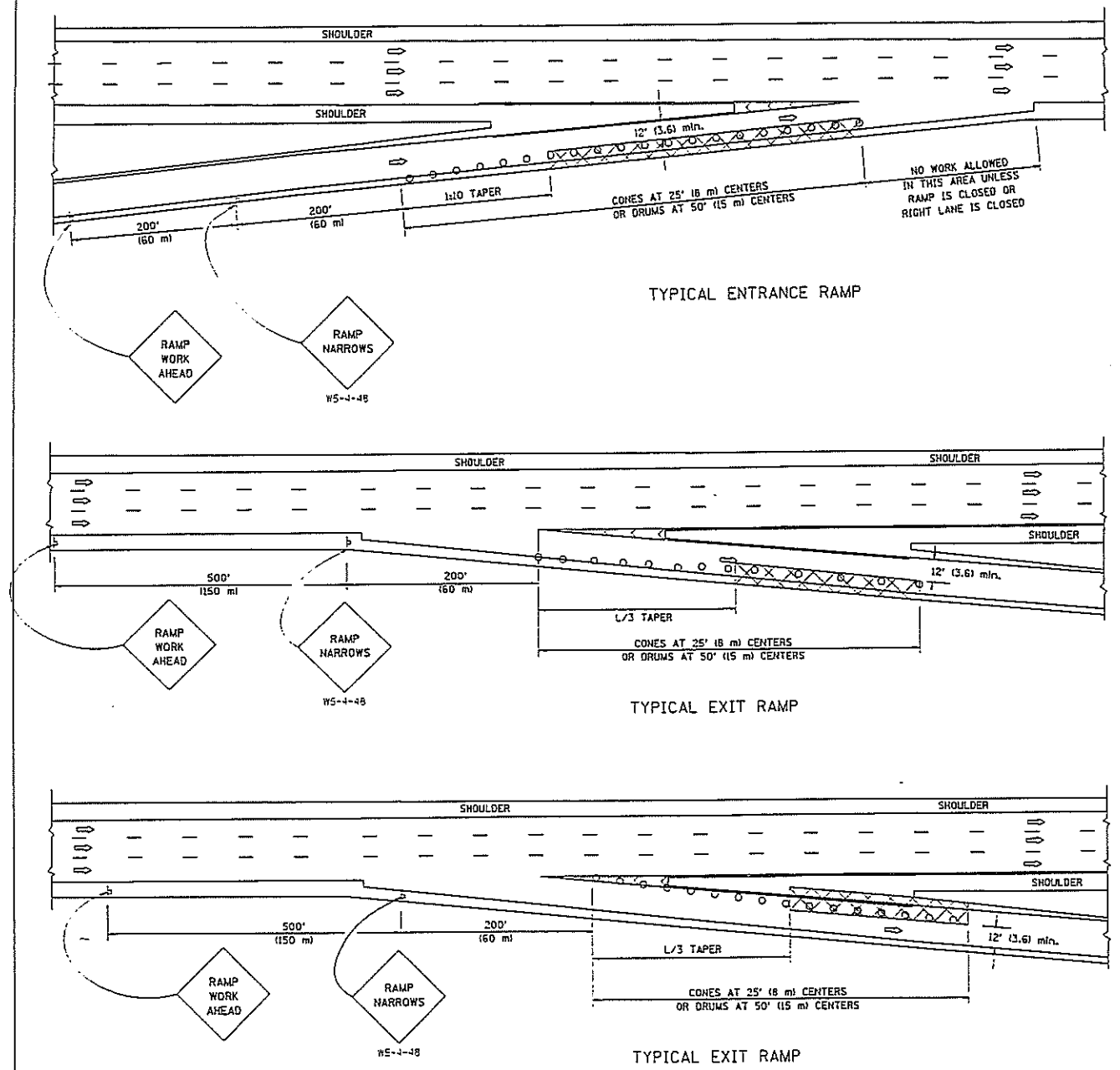
THIS DETAIL IS USED WHERE:  
 1. VEHICLES, EQUIPMENT, WORKERS OR THEIR ACTIVITIES ENCROACH IN AN AREA CLOSER THAN 15' (4.5 m) TO THE EDGE OF PAVEMENT FOR A PERIOD IN EXCESS OF 15 MINUTES.

ARRAY DESIGN PER MANUFACTURER TO BE NCHRP 350 COMPLIANT.

ALL DIMENSIONS ARE IN INCHES (MILLIMETERS) UNLESS OTHERWISE SHOWN.

FILE NAME = I:\projects\2012-05-07\2012-05-07.dgn	USER NAME = leysa	DESIGNED -	REVISED - 04-03	<b>STATE OF ILLINOIS DEPARTMENT OF TRANSPORTATION</b>	<b>TRAFFIC CONTROL DETAILS FOR FREEWAY SHOULDER CLOSURES AND PARTIAL RAMP CLOSURES</b>		F.A. RT. #	SECTION	COUNTY	TOTAL SHEETS	SHEET NO.
		DRAWN - D.W.S.	REVISED - J.A.F. 12-06		SCALE: NONE	SHEET NO. 1 OF 1	STA.	TO STA.	VAR 2012-0570TR	VAR 10	10
		CHECKED -	REVISED - S.P.B. 01-07						TC-17	CONTRACT NO. 60V6	
		DATE - 11-96	REVISED - S.P.B. 12-09						FED. ROAD DIST. NO. 1 (ILLINOIS) FED. AID PROJECT		

PARTIAL RAMP CLOSURE DETAILS



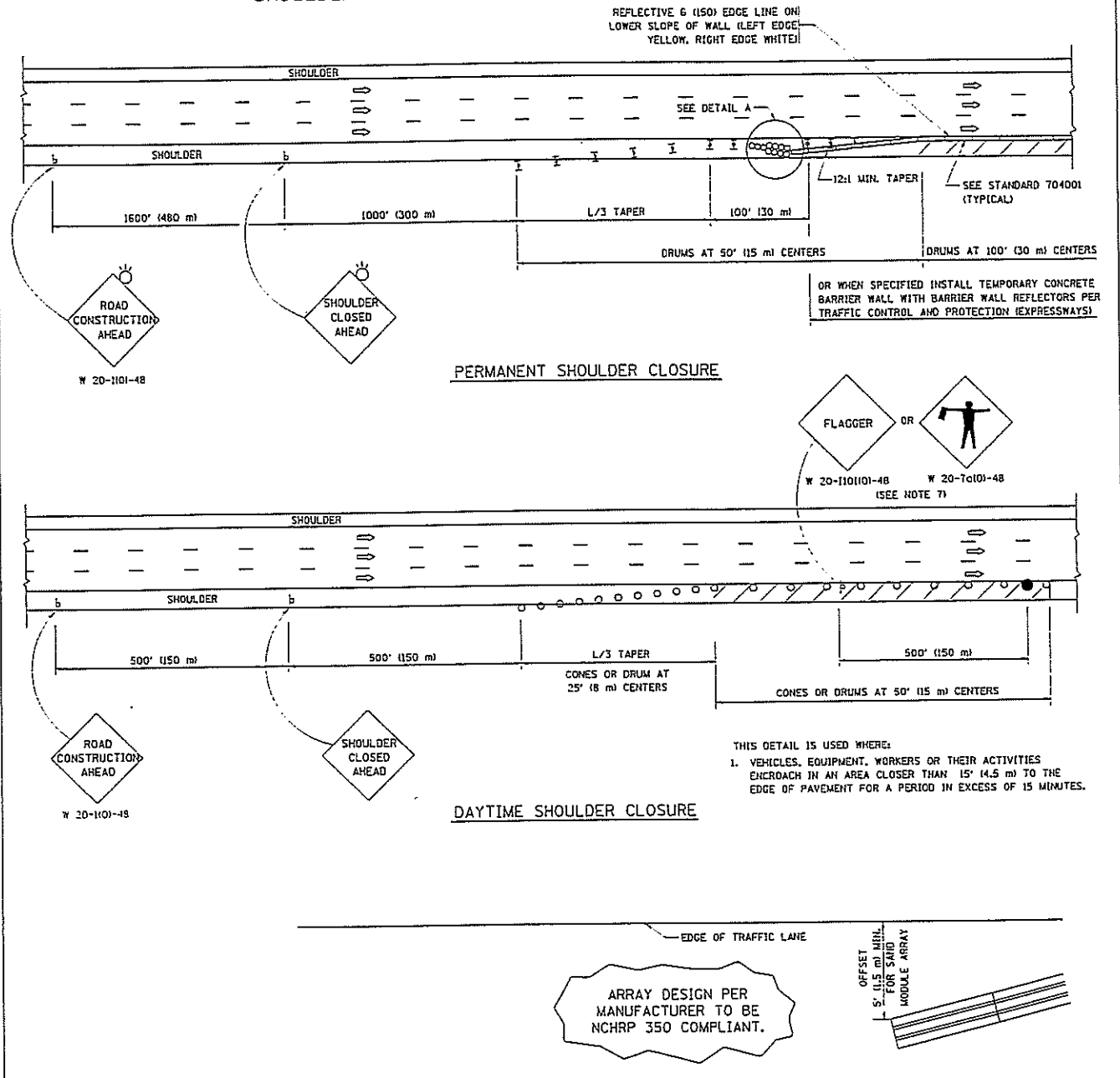
SYMBOLS

- ACTIVE WORK AREA
- SIGN ON PORTABLE OR PERMANENT SUPPORT
- FLAGGER WITH CONTROL SIGN
- TYPE II BARRICADE, DRUM OR VERTICAL BARRICADE WITH STEADY BURN MONO-DIRECTIONAL LIGHT
- CONE, DRUM OR BARRICADE

GENERAL NOTES

1. THE "L" DISTANCE EQUALS:  
 SPEED LIMIT                      FORMULAS  
 45 mph (80 km/h)                  METRIC    ENGLISH  
 OR GREATER:                      L=0.65(W/S)    L=(W/S)<sup>2</sup>  
 W = WIDTH OF OFFSET IN FEET (METERS)  
 S = NORMAL POSTED SPEED MPH (KM/H)
2. PLASTIC DRUMS WITH HIGH PERFORMANCE REFLECTIVE SHEETING AND STEADY BURNING LIGHTS ARE REQUIRED FOR ALL NIGHTTIME CLOSURES.
3. ALL SIGNS SHALL BE POST MOUNTED IF THE CLOSURE TIME EXCEEDS FOUR DAYS.
4. FLASHING LIGHTS SHALL BE USED DURING THE HOURS OF DARKNESS AND SHALL BE INSTALLED ABOVE THE FIRST TWO SETS OF SIGNS.

SHOULDER CLOSURE DETAILS



THIS DETAIL IS USED WHERE:  
 1. VEHICLES, EQUIPMENT, WORKERS OR THEIR ACTIVITIES ENCROACH IN AN AREA CLOSER THAN 15' (4.5 m) TO THE EDGE OF PAVEMENT FOR A PERIOD IN EXCESS OF 15 MINUTES.

ARRAY DESIGN PER MANUFACTURER TO BE NCHRP 350 COMPLIANT.

ALL DIMENSIONS ARE IN INCHES (MILLIMETERS) UNLESS OTHERWISE SHOWN.

FILE NAME = I:\projects\2012-05-07\2012-05-07.dgn	USER NAME = leysa	DESIGNED -	REVISED - 04-03	<b>STATE OF ILLINOIS DEPARTMENT OF TRANSPORTATION</b>	<b>TRAFFIC CONTROL DETAILS FOR FREEWAY SHOULDER CLOSURES AND PARTIAL RAMP CLOSURES</b>		F.A. RT. #	SECTION	COUNTY	TOTAL SHEETS	SHEET NO.
		DRAWN - D.W.S.	REVISED - J.A.F. 12-06		SCALE: NONE	SHEET NO. 1 OF 1	STA.	TO STA.	VAR 2012-0570TR	VAR 10	10
		CHECKED -	REVISED - S.P.B. 01-07						TC-17		
		DATE - 11-96	REVISED - S.P.B. 12-09						CONTRACT NO. 60V6		