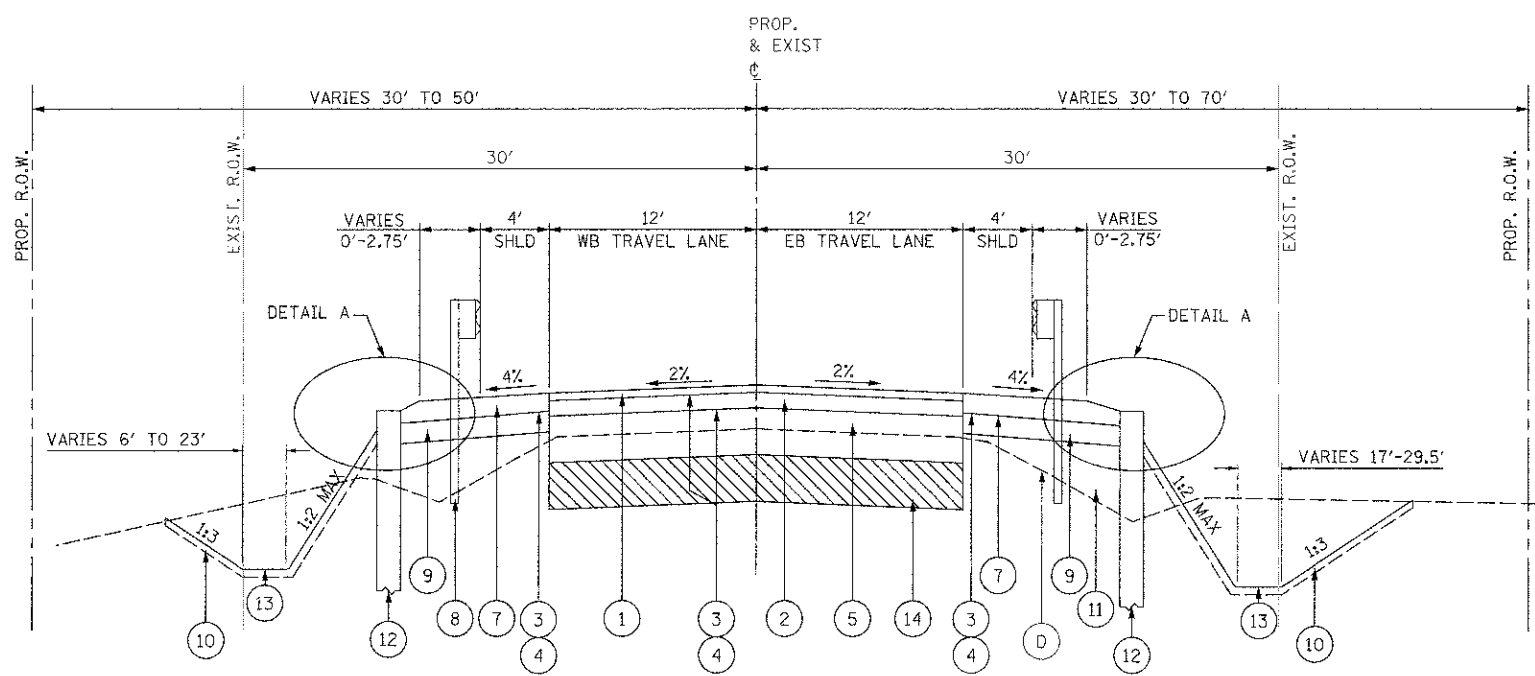


PROPOSED TYPICAL SECTION

LEFT STA. 106+00.00 TO STA. 108+00.00
 STA. 110+74.30 TO STA. 112+74.50

RIGHT STA. 103+67.67 TO STA. 107+00.00
 STA. 111+75.00 TO STA. 113+35.00



PROPOSED TYPICAL SECTION

LEFT STA. 108+00.00 TO STA. 109+03.70

RIGHT STA. 107+00.00 TO STA. 109+03.70
 STA. 110+74.30 TO STA. 111+75.00

EXISTING LEGEND

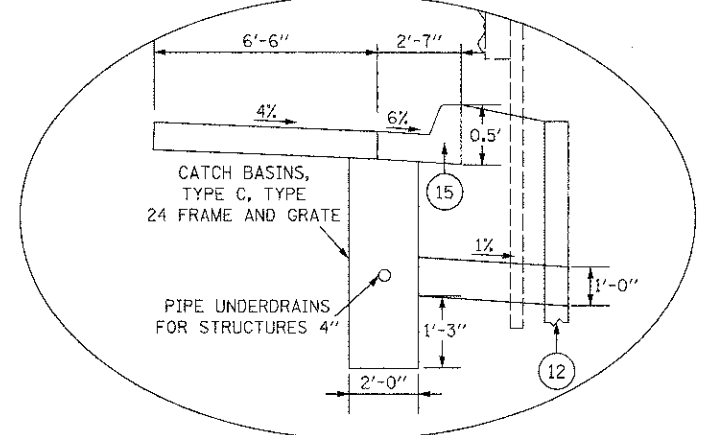
- (A) HOT MIX ASPHALT SURFACE AND BINDER COURSE, #10"
- (B) AGGREGATE SUBBASE
- (C) AGGREGATE SHOULDER
- (D) EXISTING GROUND
- REMOVAL ITEMS
- SHOULDER REMOVAL (INCLUDED IN COST OF EARTH EXCAVATION)

PROPOSED LEGEND

- (1) HOT-MIX ASPHALT SURFACE COURSE, MIX "D", N50, 2"
- (2) HOT-MIX ASPHALT BINDER COURSE, IL-19.0, N50, 4"
- (3) BITUMINOUS MATERIALS (PRIME COAT)
- (4) AGGREGATE (PRIME COAT)
- (5) AGGREGATE SUBGRADE IMPROVEMENT
- (6) AGGREGATE SHOULDERS, TYPE B, 6"
- (7) HOT-MIX ASPHALT SHOULDERS, 6"
- (8) STEEL PLATE BEAM GUARDRAIL, TYPE A, 9 FOOT POSTS
- (9) SUBBASE GRANULAR MATERIAL, TYPE B 6"
- (10) TOPSOIL FURNISH AND PLACE, 6"
- (11) EMBANKMENT
- (12) PERMANENT STEEL SHEET PILING
- (13) GRADING AND SHAPING DITCHES
- (14) REMOVAL AND DISPOSAL OF UNSUITABLE MATERIAL & AGGREGATE SUBGRADE IMPROVEMENT
- (15) COMBINATION CONCRETE CURB AND GUTTER, TYPE B-6.24

NOTES:

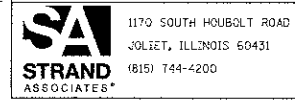
1. (1) + (2) = HOT-MIX ASPHALT (FULL DEPTH), 6"
2. BRIDGE OMISSION: STA. 109+03.70 TO STA. 110+74.30 RT/LT
3. PAVEMENT STRUCTURE SHALL BE PAID FOR AS BRIDGE APPROACH PAVEMENT CONNECTOR (FLEXIBLE) FROM STA. 108+03.70 TO STA. 109+03.70 AND FROM STA. 110+74.30 TO STA. 111+74.30
4. (5) + (14) = AGGREGATE SUBGRADE IMPROVEMENT 24"



DETAIL A: CURB AND GUTTER AND CATCH BASIN DETAIL

STA. 108+93.65 TO STA. 109+03.67 LT
 STA. 108+93.67 TO STA. 109+03.66 RT

FILE NAME: s:\proj\6890-6899\6842\087\mcras\oadd_sheets\01-63666-ah-ty-section2.dgn



USER NAME = dennisw	DESIGNED - VLM	REVISED -
PLOT SCALE = 20.0000' / IN.	DRAWN - DJW	REVISED -
PLOT DATE = 8/23/2012	CHECKED - AJS	REVISED -
	DATE - 4-23-12	REVISED -

MCHENRY COUNTY DIVISION OF TRANSPORTATION
HILL ROAD BRIDGE OVER
NORTH BRANCH NIPPERSINK CREEK

SCALE: AS SHOWN	SHEET NO. OF SHEETS	STA. TO STA.
TYPICAL SECTIONS		

TR	SECTION	COUNTY	TOTAL SHEETS	SHEET NO.
21	08-00356-00-BR	MCHENRY	77	9
CONTRACT NO. 63666				
FED. ROAD DIST. NO. 1 ILLINOIS FED. AID PROJECT				