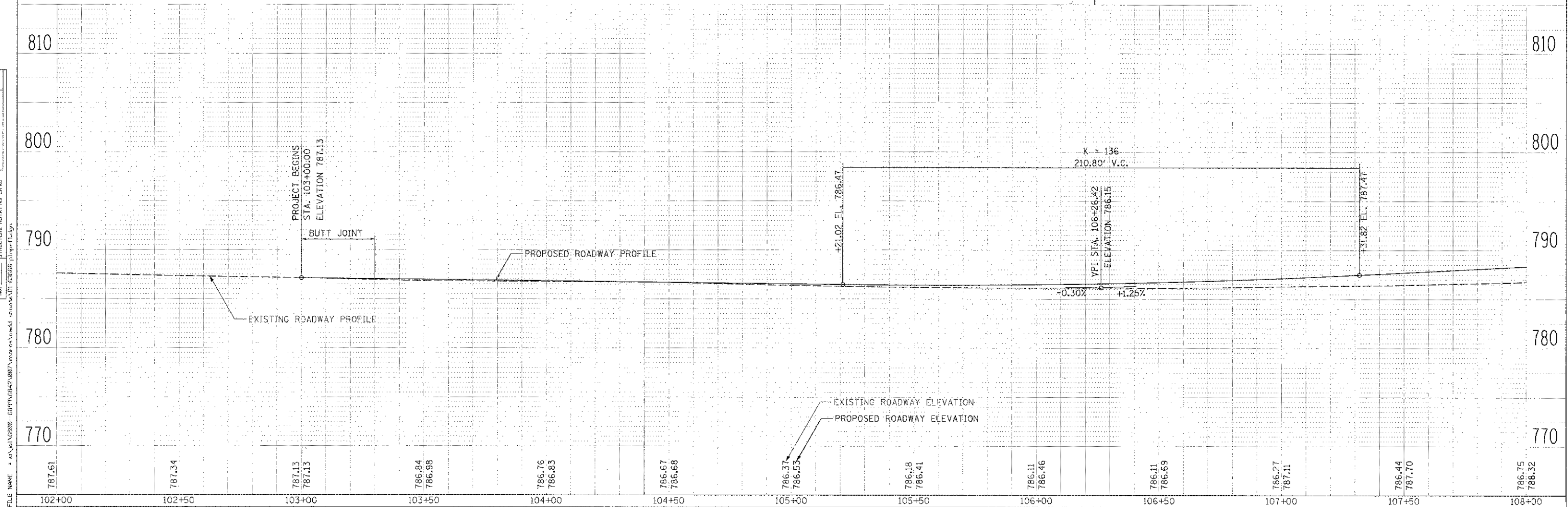
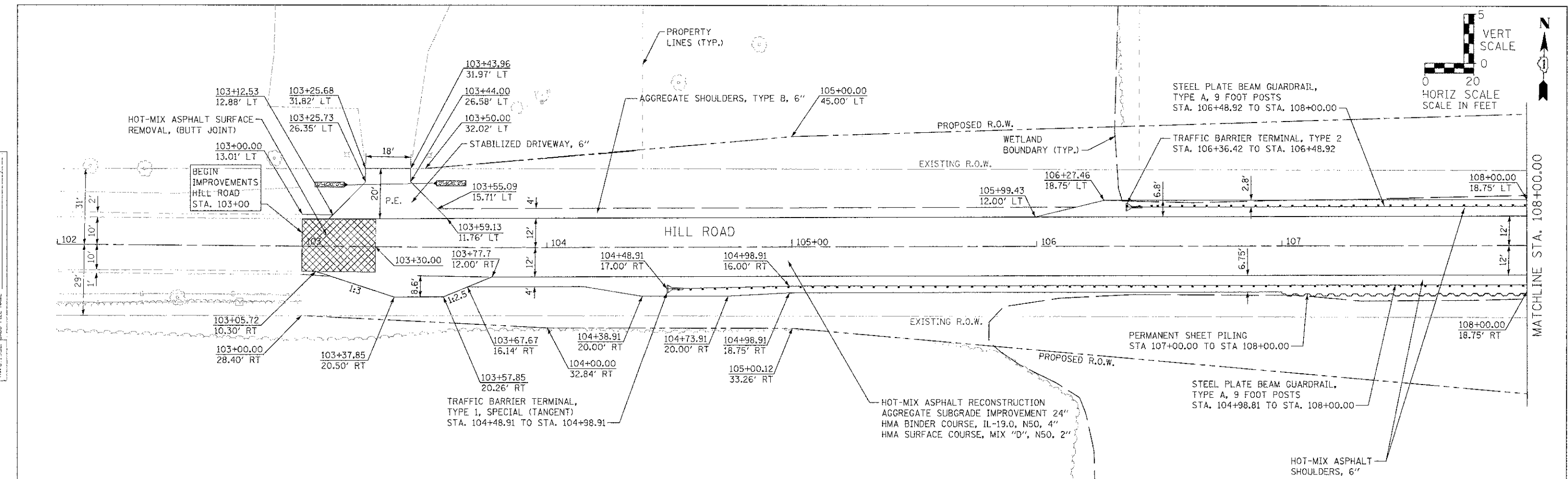


PLAN	SURVEYED	DATE
	PLOTTED	
	CHECKED	
	DESIGNED	
	DRAWN	
	BY	
	NO.	
	FILE NAME	

PROFILE	SURVEYED	DATE
	PLOTTED	
	CHECKED	
	DESIGNED	
	DRAWN	
	BY	
	NO.	
	FILE NAME	



1170 SOUTH HOURS ROAD
JOLIET, ILLINOIS 60431
(815) 744-4200

USER NAME = dennis	DESIGNED - VLM	REVISD -
PLT SCALE = 20.0000" / 1"	DRAWN - DJW	REVISD -
PLT DATE = 8/23/2012	CHECKED - AJS	REVISD -
	DATE - 4-23-12	REVISD -

MCHENRY COUNTY DIVISION OF TRANSPORTATION
HILL ROAD BRIDGE OVER
NORTH BRANCH NIPPERSINK CREEK

PLAN AND PROFILE			
SCALE: AS SHOWN	SHEET NO.	OF SHEETS	STA. 102+00.00 TO STA. 108+00.00

TR	SECTION	COUNTY	TOTAL SHEETS	SHEET NO.
21	08-00356-00-BR	MCHENRY	77	13
CONTRACT NO. 63666				
FED. ROAD DIST. NO. 1 ILLINOIS FED. AID PROJECT				