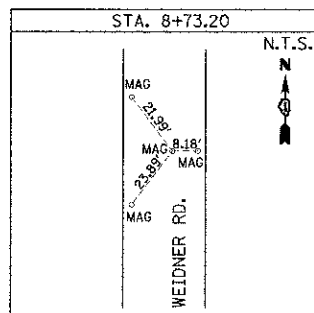


STA. 11+00.00
N.2113102.0680
E.896677.0730



STA. 8+73.20
N.2112875.2929
E.896680.4624

WEIDNER ROAD
END IMPROVEMENT
STA. 7+12.00

SITE BENCHMARKS:

DATUM = NAVD88

1. (BM1) RAIL ROAD SPIKE IN SE. FACE OF POWER POLE AT NW CORNER OF WEIDNER ROAD AND LAWRENCE ROAD.
ELEVATION = 903.62' (NAVD88)
2. (BM2) RAIL ROAD SPIKE IN S. FACE OF 4th POWER POLE N. OF LAWRENCE ROAD ON W. SIDE OF WEIDNER ROAD.
ELEVATION = 904.67' (NAVD88)
3. (BM3) RAIL ROAD SPIKE IN N. FACE OF 4th POWER POLE W. OF WEIDNER ROAD ON S. SIDE OF LAWRENCE ROAD.
ELEVATION = 906.14' (NAVD88)
4. (BM4) RAIL ROAD SPIKE IN S. FACE OF 5th POWER POLE E. OF WEIDNER ROAD ON N. SIDE OF LAWRENCE ROAD.
ELEVATION = 901.49' (NAVD88)

POT Sta 199+00.00

LAWRENCE ROAD
BEGIN IMPROVEMENT
STA 200+82.87

LAWRENCE ROAD

N89°56'06"E
619.19'

BM1

POT Sta 5+00.00

N89°56'06"E
1953.85'

LAWRENCE ROAD

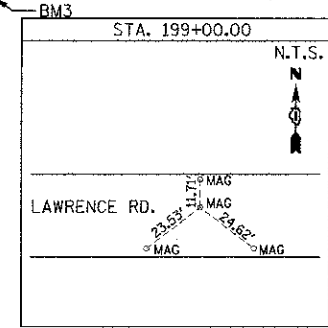
N89°56'06"E
934.66'

210+00

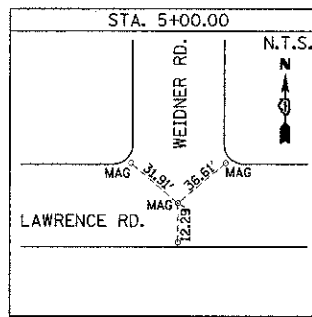
LAWRENCE ROAD
END IMPROVEMENTS
STA 213+38.27

BM4

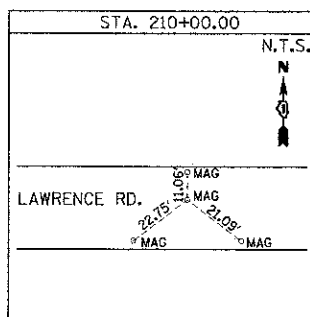
POT Sta 214+53.85



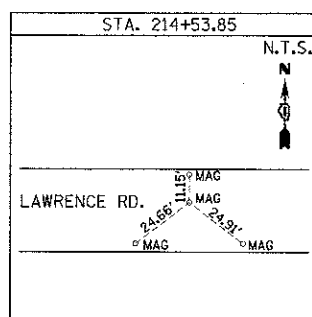
STA. 199+00.00
N.2112504.6835
E.896066.8519



STA. 5+00.00
N.2112502.1350
E.896686.0396



STA. 210+00.00
N.2112500.1562
E.897166.8426



STA. 214+53.85
N.2112498.2882
E.897620.6887

FILE NAME: M:\255-012 Lawrence Phase 1\10000 DREETS\755-012-jnt-ATB.dgn

Bollinger, Lach & Associates, Inc.
TASCA, ILLINOIS

USER NAME = gellwanger	DESIGNED - GJE	REVISED -
PLOT SCALE = 50.00' / 1" =	DRAWN - GJE	REVISED -
PLOT DATE = 10/3/2012	CHECKED - CF	REVISED -
	DATE - 08/17/12	REVISED -

**MCHENRY COUNTY
DIVISION OF TRANSPORTATION**

**LAWRENCE ROAD BRIDGE OVER PISCASAW CREEK
ALIGNMENT, TIES AND BENCHMARK**

SCALE: 1"=50' SHEET NO. 10 OF 87 SHEETS STA. TO STA.

F.A.S. RTE. 0028	SECTION 08-00355-01-BR	COUNTY MCHENRY	TOTAL SHEETS 87	SHEET NO. 10
CONTRACT NO. 63694			ILLINOIS FED. AID PROJECT	