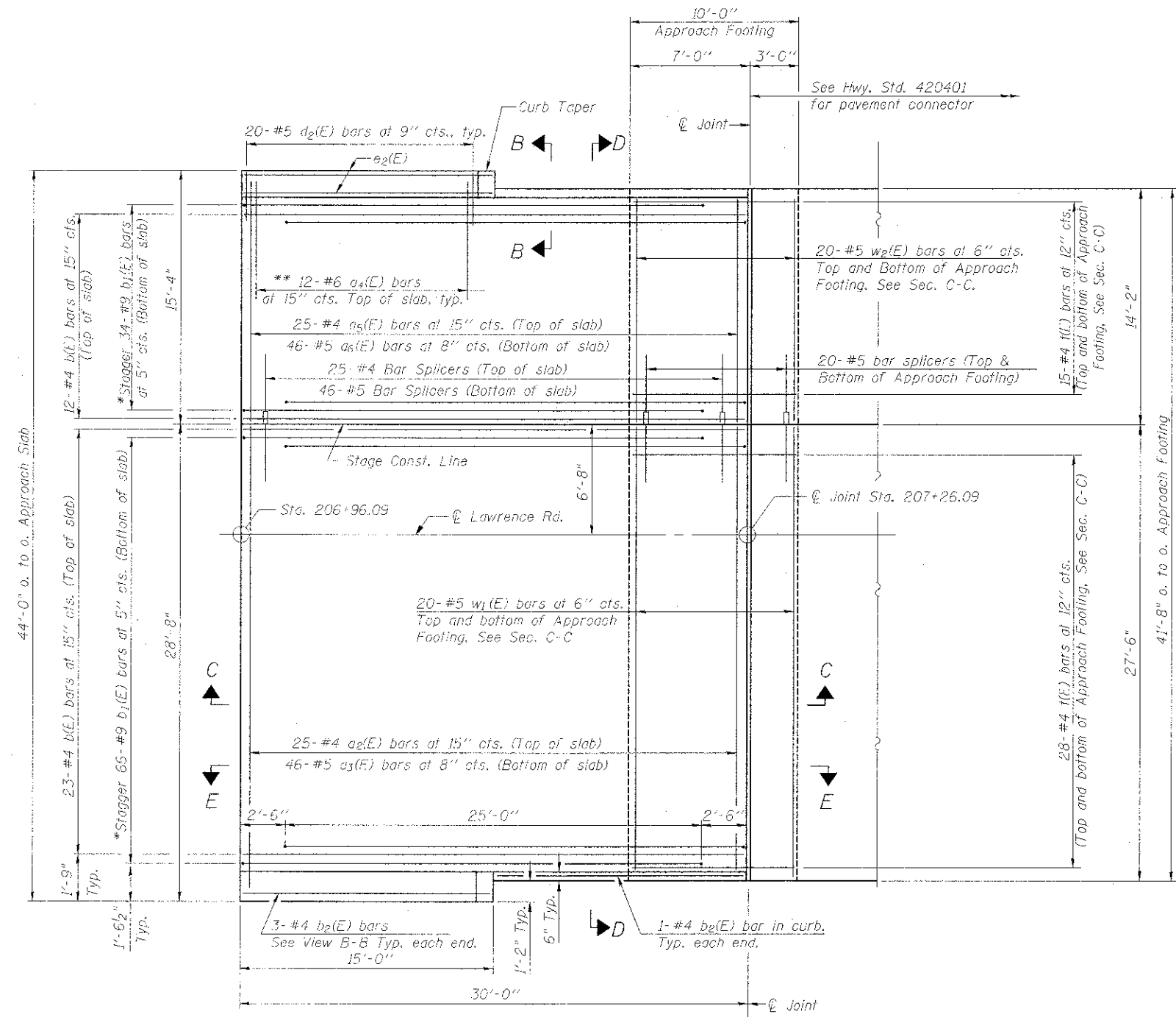
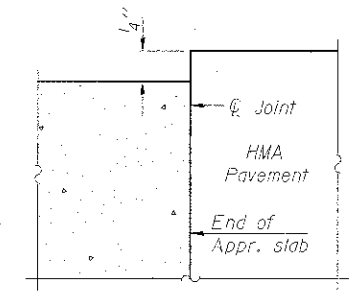


Notes:  
 See sheet 14 of 33 for Sections C-C & D-D and View E-E.  
 $a_2(E)$ ,  $a_3(E)$ ,  $a_5(E)$  and  $a_6(E)$  bar spacings measured along  $\text{CL}$  Rdwy.  
 See Sheet 17 of 33 for rail post spacing.

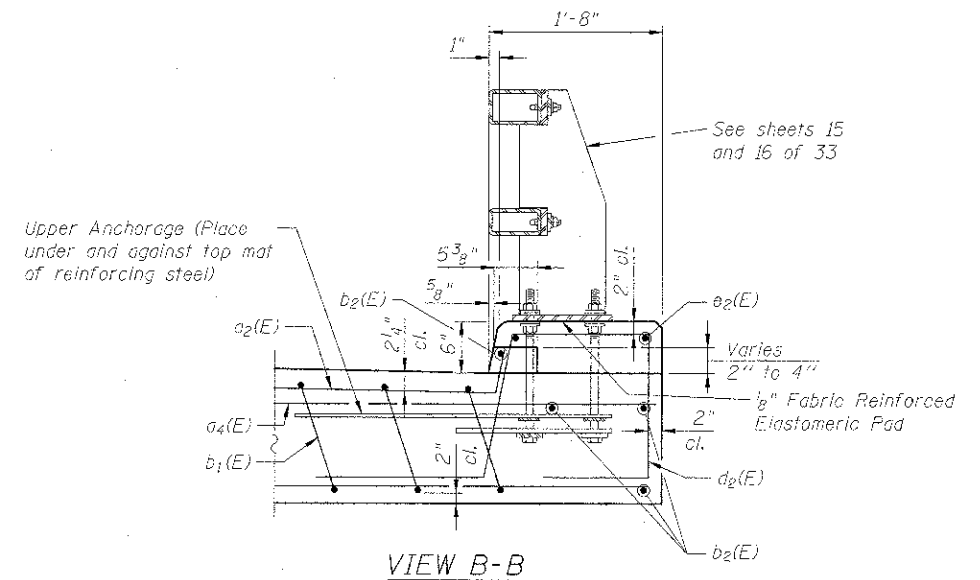


PLAN

\* 1/16" #9  $b_1(E)$  bars as required to maintain clearance.  
 \*\* Spacing between  $a_2(E)$  &  $a_5(E)$  bars, typ. ea. curb.



FLEXIBLE PAVEMENT  
 DETAIL A



VIEW B-B

BA-0 7-1-10

FILE NAME: W:\755-312 Lawrence Phase 1\1\2010 0914\15\2\enr\enr\0663164\_026-013.dgn

**Bollinger, Lach & Associates, Inc.**  
 ITASCA, ILLINOIS

USER NAME = j_lacourte	DESIGNED <i>JMT</i>	REVISED -
PLOT SCALE =	CHECKED <i>JJI</i>	REVISED -
PLOT DATE = 10/3/2012	DRAWN <i>GM</i>	REVISED -
	CHECKED <i>JJI</i>	REVISED -

**McHENRY COUNTY**  
**DIVISION OF TRANSPORTATION**  
**LAWRENCE ROAD BRIDGE OVER PISCASAW CREEK**

**EAST BRIDGE APPROACH SLAB DETAILS**  
**STRUCTURE NO. 056-3184**

(Sheet 2 of 3)

F.A.S. R.E. 0028	SECTION C8-00355-01-BR	COUNTY McHENRY	TOTAL SHEETS 87	SHEET NO. 45
CONTRACT NO. 63694			ILLINOIS FED. AID PROJECT	

SHEET NO. 13 OF 33 SHEETS