

PROGRAM AND OFFICE ENGINEER: CHARLES F. RIDDLE, P.E. 847-705-4406, SCHAUMBURG, IL

F.A. RTE.	SECTION	COUNTY	TOTAL SHEETS	SHEET NO.
	11-F3000-00-BT	WILL	27	1
FED. ROAD DIST. NO.	ILLINOIS	CONTRACT NO.	63728	
		NOVEMBER	2012 LETTING	

**INDEX OF SHEETS**

SHEET NO.	DESCRIPTION
1	COVER
2	GENERAL NOTES AND STANDARDS
3	SUMMARY OF QUANTITIES / SCHEDULES
4	TYPICAL SECTIONS
5-8	PROPOSED PLAN & PROFILE
9-13	CONSTRUCTION DETAILS AND STANDARDS
14-22	CROSS SECTIONS

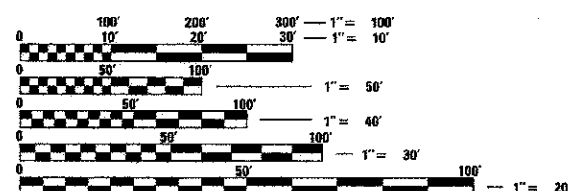
**PROJECT LOCATED IN WILL COUNTY**

**DESIGN SPEED**  
20 MPH

**CLASSIFICATION**  
BIKE TRAIL

**SPONSORING AGENCY**

**FOREST PRESERVE DISTRICT OF WILL COUNTY**



FULL SIZE PLANS HAVE BEEN PREPARED USING STANDARD ENGINEERING SCALES. REDUCED SIZED PLANS WILL NOT CONFORM TO STANDARD SCALES. IN MAKING MEASUREMENTS ON REDUCED PLANS, THE ABOVE SCALES MAY BE USED.

J.U.L.I.E.  
JOINT UTILITY LOCATION INFORMATION FOR EXCAVATION  
1-800-892-0123 (JULIE)  
OR 811

**STATE OF ILLINOIS  
DEPARTMENT OF TRANSPORTATION**

**DIVISION OF HIGHWAYS  
PLANS FOR PROPOSED  
FEDERAL AID PROJECT  
VETERANS TRAIL NORTH BIKE TRAIL**

**BLUFF ROAD TO INTERNATIONALE PARKWAY**

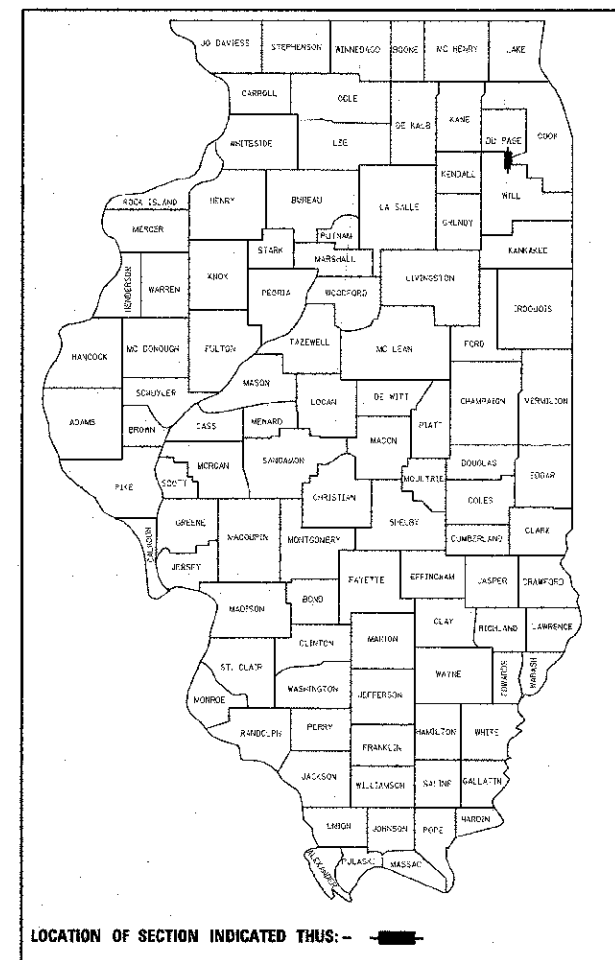
**SECTION NO. 11-F3000-00-BT**

**PROJECT NO. TE-00D1(858)**

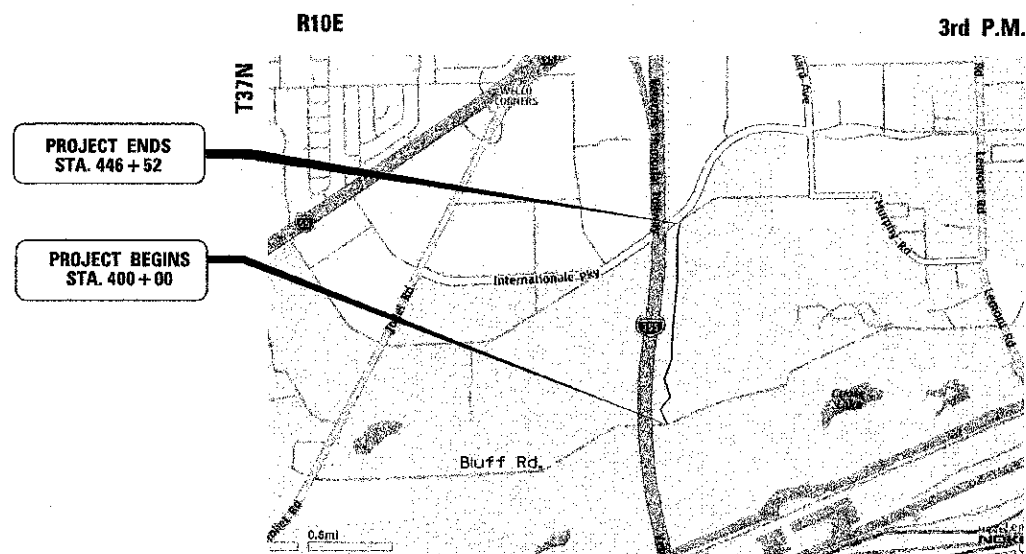
**FOREST PRESERVE DISTRICT OF WILL COUNTY**

**WILL COUNTY**

**JOB NO: C-91-430-11**



LOCATION OF SECTION INDICATED THUS: —



**BM 1:**  
SOUTHWEST CONCRETE WINGWALL OF HAUL ROAD BRIDGE LOCATED 257' WEST OF THE CENTERLINE OF THE EXISTING COOK COUNTY CENTENNIAL TRAIL.

N=1,823,322.18  
E=1,067,268.28  
EL = 595.82



SIGNATURE  
DATE 6/26/12

LICENSE EXPIRES 11/30/2013

STATE OF ILLINOIS  
DEPARTMENT OF TRANSPORTATION  
DIVISION OF HIGHWAYS

Approved June 27 2012  
Karen Forte, C.E.  
FOREST PRESERVE DISTRICT OF WILL COUNTY

Passed August 23 2012  
District #1 Engineer of Local Roads and Streets

Releasing for Bid Based on Limited Review August 23 2012  
Deputy Director of Highways, Region #1 Engineer

**PRINTED BY THE AUTHORITY OF THE STATE OF ILLINOIS**

PLANS PREPARED BY:  
**URS**  
100 SOUTH WACKER DRIVE, SUITE 500  
CHICAGO, IL 60606  
TEL. (312) 939-1000  
FAX (312) 939-4198

Sec. 13 & 24, DuPage Township LOCATION MAP (NOT TO SCALE)

GROSS LENGTH AND NET LENGTH = 4,652 FEET (0.88 MILES)

CONTRACT NO. 63728