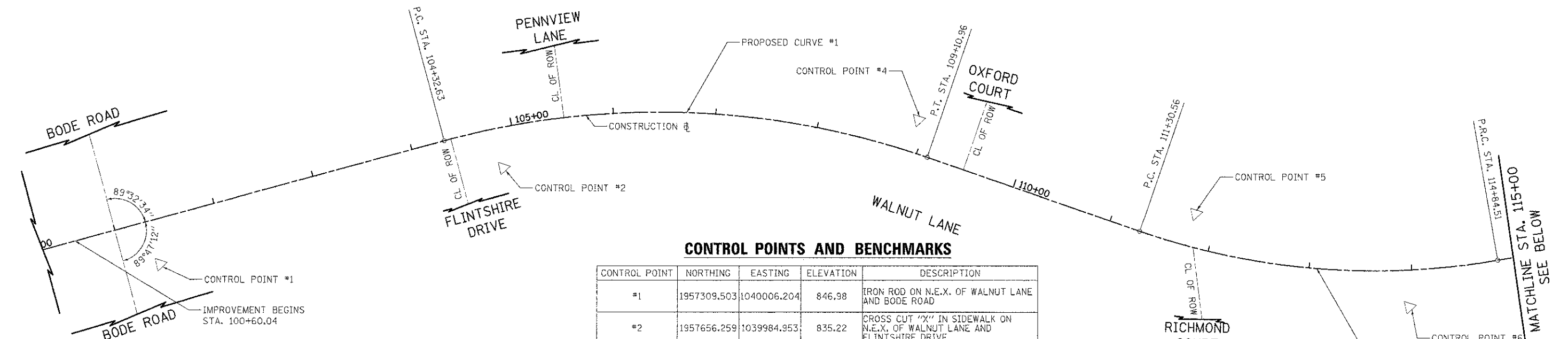


DATE	
BY	
REVISION	
PLANNED	
NOTED	
NO.	
FILE NAME	

DATE	
BY	
REVISION	
PLANNED	
NOTED	
NO.	
FILE NAME	



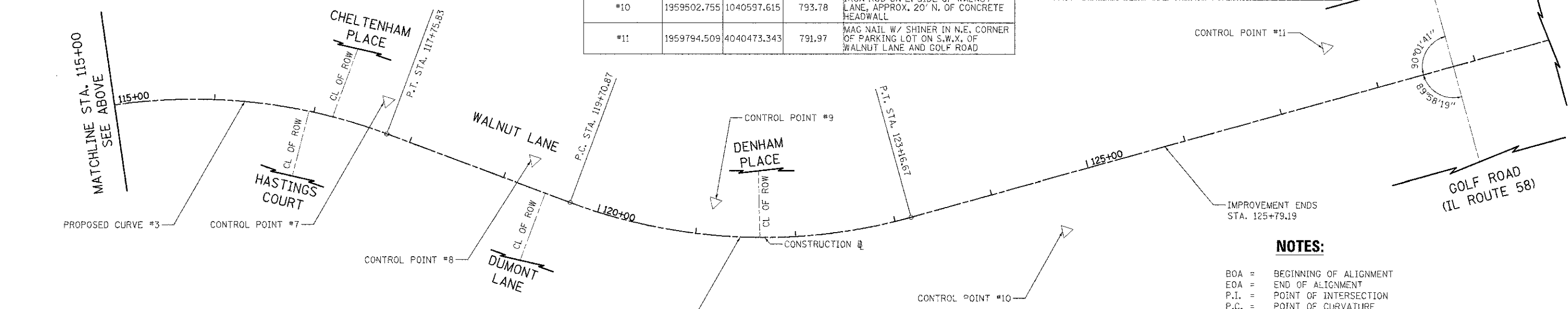
CONTROL POINTS AND BENCHMARKS

CONTROL POINT	NORTHING	EASTING	ELEVATION	DESCRIPTION
#1	1957309.503	1040006.204	846.98	IRON ROD ON N.E.X. OF WALNUT LANE AND BODE ROAD
#2	1957656.259	1039984.953	835.22	CROSS CUT "X" IN SIDEWALK ON N.E.X. OF WALNUT LANE AND FLINTSHIRE DRIVE
#3	1957724.427	1039652.989	837.06	IRON ROD WITH V.O.S. CAP #1230 IN S. PARKWAY OF PENNVIEW LANE, APPROX. 102' W. OF FARNHAM COURT
#4	1958061.876	1040023.871	829.32	CROSS CUT "X" IN SIDEWALK ON S.W.X. OF WALNUT LANE AND OXFORD COURT
#5	1958307.203	1040169.692	818.31	CROSS CUT "X" IN SIDEWALK ON W. SIDE OF WALNUT LANE, JUST N. OF THE SOUTH CLUBHOUSE PARKING LOT
#6	1958492.063	1040302.040	809.73	IRON ROD ON E. SIDE OF WALNUT LANE BETWEEN N. AND S. FINCHLEY COURT
#7	1958868.374	1040329.859	801.16	CROSS CUT "X" IN SIDEWALK ON N.W.X. OF WALNUT LANE AND CHELTENHAM COURT
#8	1958998.917	1040417.976	798.15	CROSS CUT "X" IN SIDEWALK ON W. SIDE OF WALNUT LANE, JUST S. OF DUMONT LANE
#9	1959166.179	1040496.495	794.24	CROSS CUT "X" IN SIDEWALK ON S.W.X. WALNUT LANE AND DENHAM PLACE
#10	1959502.755	1040597.615	793.78	IRON ROD ON E. SIDE OF WALNUT LANE, APPROX. 20' N. OF CONCRETE HEADWALL
#11	1959794.509	1040473.343	791.97	MAG NAIL W/ SHINER IN N.E. CORNER OF PARKING LOT ON S.W.X. OF WALNUT LANE AND GOLF ROAD

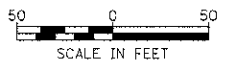
PROPOSED WALNUT LANE CONSTRUCTION BASELINE

DESCRIPTION	STATION	NORTHING	EASTING
B.O.A.	100+00.00	1,957,851.66	1,039,933.75
P.C.	104+32.63	1,957,605.46	1,039,947.00
P.I.	106+79.18	1,957,851.66	1,039,933.75
P.T.	109+10.96	1,958,062.60	1,040,061.39
P.C.	111+30.56	1,958,250.48	1,040,175.07
P.I.	113+11.40	1,958,405.21	1,040,268.69
P.R.C.	114+84.51	1,958,585.92	1,040,275.66
P.I.	116+33.67	1,958,734.97	1,040,281.40
P.T.	117+75.83	1,958,860.70	1,040,361.66
P.C.	119+70.87	1,959,025.10	1,040,466.62
P.I.	121+49.70	1,959,175.84	1,040,562.84
P.T.	123+16.67	1,959,354.34	1,040,552.02
E.O.A.	130+33.65	1,960,069.85	1,040,508.65

PROPOSED CURVE #1	PROPOSED CURVE #2	PROPOSED CURVE #3	PROPOSED CURVE #4
P.I. STA. = 106+79.18	P.I. STA. = 113+11.40	P.I. STA. = 116+33.67	P.I. STA. = 121+49.70
Δ = 34° 15' 28.00"	Δ = 28° 58' 17.10"	Δ = 30° 20' 52.15"	Δ = 36° 01' 23.05"
D = 7° 09' 43.10"	D = 8° 11' 06.40"	D = 10° 25' 02.69"	D = 10° 25' 02.69"
R = 800.00'	R = 700.00'	R = 550.00'	R = 550.00'
T = 246.55'	T = 180.85'	T = 149.16'	T = 178.83'
L = 478.33'	L = 353.95'	L = 291.32'	L = 345.80'
E = 37.13'	E = 22.98'	E = 19.87'	E = 28.34'
e = N.C.	e = N.C.	e = N.C.	e = N.C.
P.C. STA. = 104+32.63	P.C. STA. = 111+30.56	P.R.C. STA. = 114+84.51	P.C. STA. = 119+70.87
P.T. STA. = 109+10.96	P.R.C. STA. = 114+84.51	P.T. STA. = 117+75.83	P.T. STA. = 123+16.67



ELEVATIONS ARE BASED ON FOUND VILLAGE OF SCHAUMBURG GPS SURVEY MONUMENT (STATION 1230) SET CONCRETE MONUMENT WITH CAP #1230 APPROXIMATELY 100' WEST OF BRIAR HILL DRIVE ON THE SOUTH SIDE OF PENNVIEW DRIVE N.G.V.D. '29 ELEVATION 837.06



- NOTES:**
- BOA = BEGINNING OF ALIGNMENT
 - EOA = END OF ALIGNMENT
 - P.I. = POINT OF INTERSECTION
 - P.C. = POINT OF CURVATURE
 - P.T. = POINT OF TANGENT
 - P.R.C. = POINT OF REVERSE CURVATURE