

NOTES:

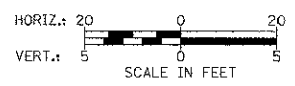
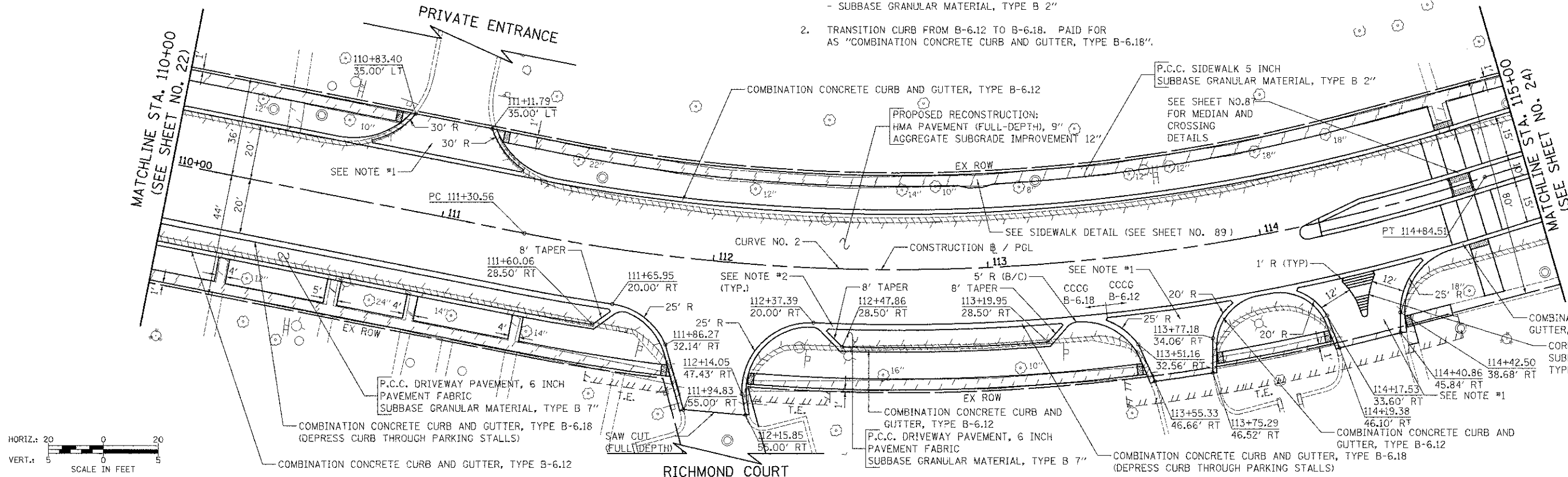
- ALL DRIVEWAY APRONS SHALL BE REPLACED WITH:
 - PORTLAND CEMENT CONCRETE DRIVEWAY PAVEMENT, 8 INCH, SPECIAL
 - SUBBASE GRANULAR MATERIAL, TYPE B 2"
- TRANSITION CURB FROM B-6.12 TO B-6.18. PAID FOR AS "COMBINATION CONCRETE CURB AND GUTTER, TYPE B-6.18".



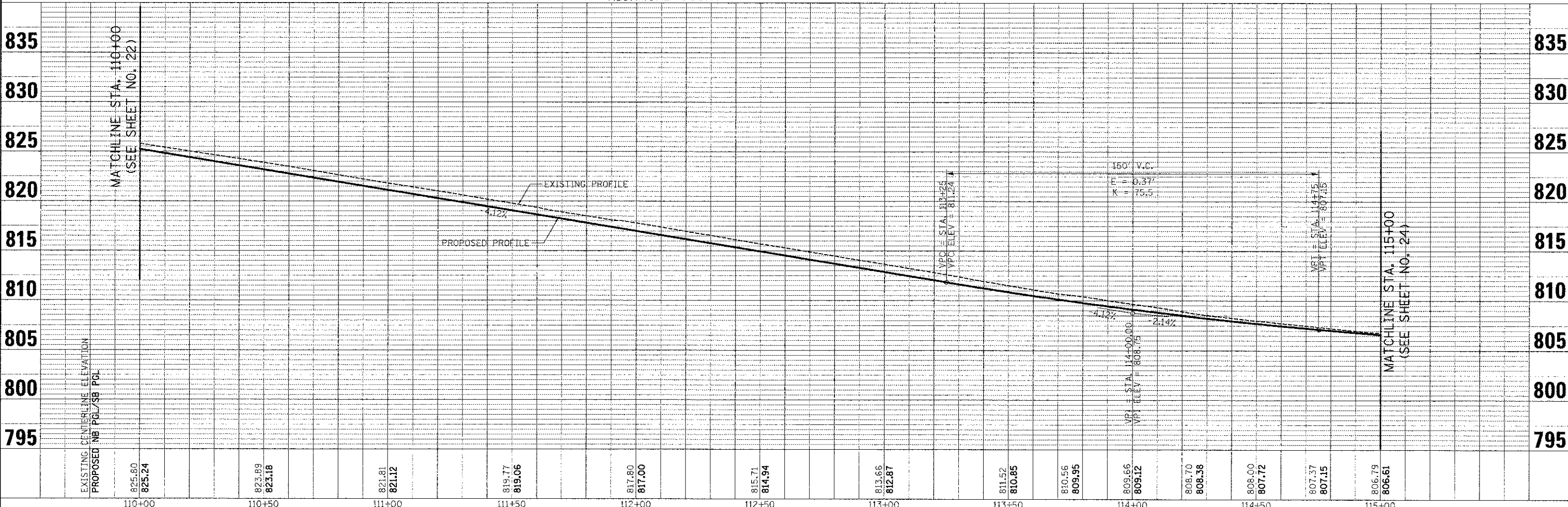
CURVE NO. 2

P.I. STA.	= 113+11.40
Δ	= 28° 58' 17.10"
D	= 8° 11' 06.40"
R	= 700.00'
L	= 180.85'
e	= 353.95'
e	= 22.98'
e	= N.C.
P.C. STA.	= 111+30.56
P.T. STA.	= 114+84.51

DATE	
BY	
PLAN	
NOTE BOOK NO.	
NO.	
DATE	
BY	
DATE	
BY	
DATE	



DATE	
BY	
DATE	
BY	
DATE	
BY	
DATE	
BY	
DATE	
BY	
DATE	
BY	



FILE NAME =	USER NAME = djk	DESIGNED - JSM	REVISED -	STATE OF ILLINOIS DEPARTMENT OF TRANSPORTATION	WALNUT LANE PLAN AND PROFILE	F.A.U. RTE.	SECTION	COUNTY	TOTAL SHEET NO.	
...V7-PlanAndProfile\APP_03.dgn	PLOT SCALE = 20,000/1 in.	DRAWN - JSM	REVISED -			2556	08-00094-00-PV	COOK	113	23
PLOT DATE = 8/15/2012	DATE = 8/20/2012	CHECKED - DJK	REVISED -			CONTRACT NO. 63738				
		DATE = 8/20/2012	REVISED -			(ILLINOIS) FED. AID PROJECT W-90C3449#				

SCALE: 1/4" = 20' SHEET NO. 3 OF 5 SHEETS STA. 110+00.00 TO STA. 115+00.00