

LEGEND

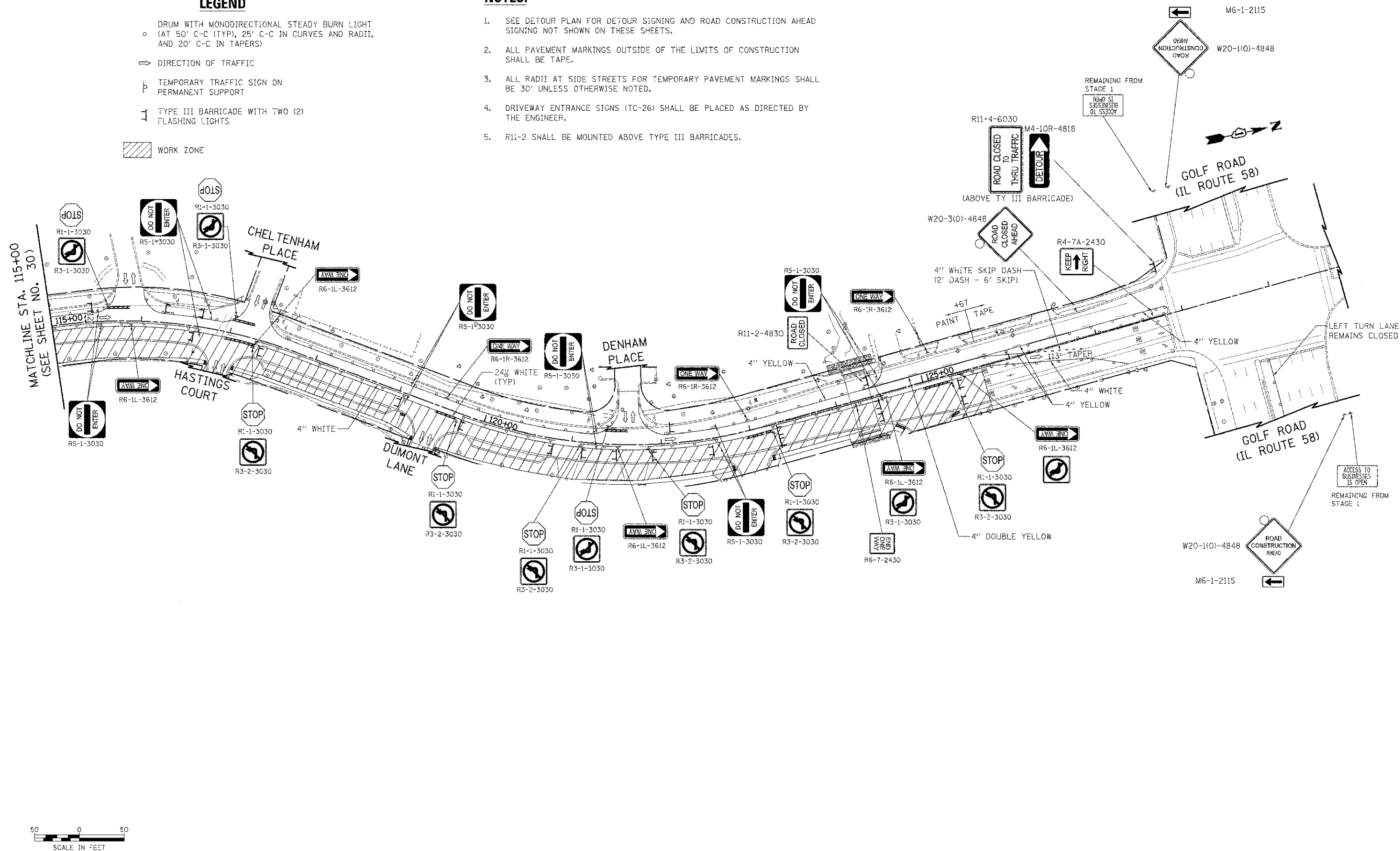
- DRUM WITH MONODIRECTIONAL STEADY BURN LIGHT
(AT 50' C-C (TYP), 25' C-C IN CURVES AND RADII,
AND 20' C-C IN TAPERS)
- ⇒ DIRECTION OF TRAFFIC
- ⊥ TEMPORARY TRAFFIC SIGN ON
PERMANENT SUPPORT
- ⊥ TYPE III BARRICADE WITH TWO (2)
FLASHING LIGHTS
- ▨ WORK ZONE

NOTES:

1. SEE DETOUR PLAN FOR DETOUR SIGNING AND ROAD CONSTRUCTION AHEAD
SIGNING NOT SHOWN ON THESE SHEETS.
2. ALL PAVEMENT MARKINGS OUTSIDE OF THE LIMITS OF CONSTRUCTION
SHALL BE TAPE.
3. ALL RADII AT SIDE STREETS FOR TEMPORARY PAVEMENT MARKINGS SHALL
BE 30' UNLESS OTHERWISE NOTED.
4. DRIVEWAY ENTRANCE SIGNS (TC-26) SHALL BE PLACED AS DIRECTED BY
THE ENGINEER.
5. R11-2 SHALL BE MOUNTED ABOVE TYPE III BARRICADES.

DATE	BY
DATE	BY
DATE	BY

DATE	BY
DATE	BY
DATE	BY



FILE NAME = ... \08-MOT\2536-MOT-Stage2-E2.dgn
 USER NAME = djk
 DESIGNED - JSM
 DRAWN - JSM
 CHECKED - DJK
 DATE - 8/20/2012

REVISOR
 REVISION
 DATE

**STATE OF ILLINOIS
 DEPARTMENT OF TRANSPORTATION**

**WALNUT LANE
 MAINTENANCE OF TRAFFIC - STAGE 2**
 SCALE: 1" = 50' SHEET NO. 2 OF 2 SHEETS STA. 115+00.00 TO STA. 125+67.00

F.A.U. RTE.	SECTION	COUNTY	TOTAL SHEETS	SHEET NO.
2556	08-00094-00-FV	COOK	113	31
CONTRACT NO. 63738				
ILLINOIS FED. AID PROJECT M-9003(494)				