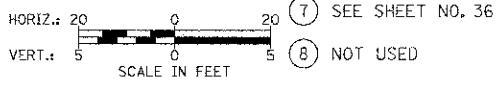
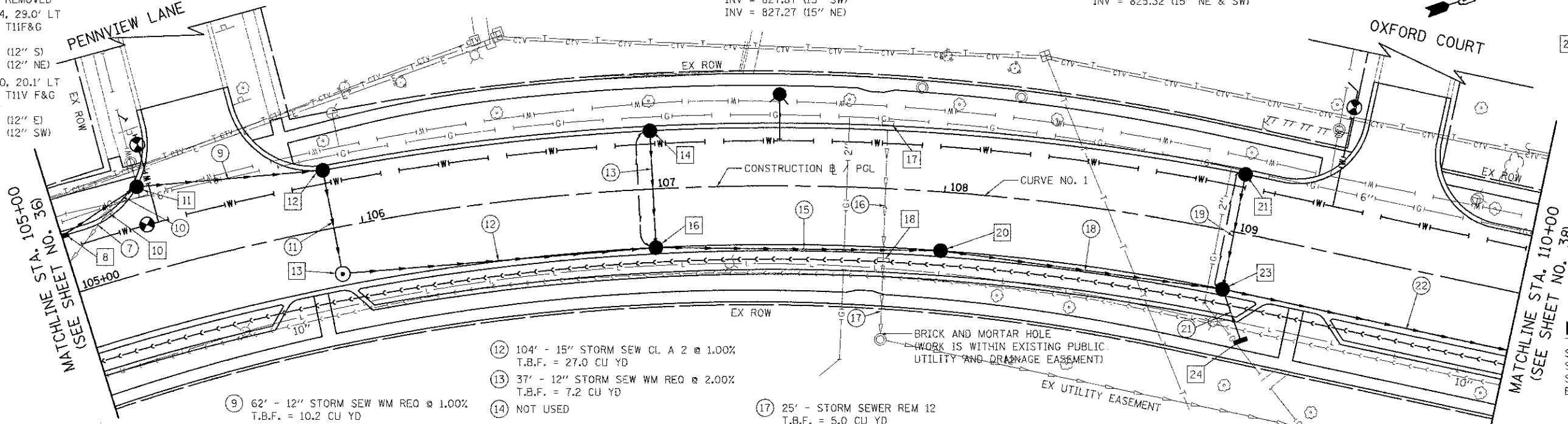


- 8 SEE SHEET NO. 36
- 9 NOT USED
- 10 STA. 105+16.4, 22.8' LT INLET TO BE REMOVED
- 11 STA. 105+28.4, 29.0' LT CB TA 4 DIA T11F&G RIM = 834.34 INV = 830.54 (12" S) INV = 830.24 (12" NE)
- 12 STA. 105+90.0, 20.1' LT CB TA 4 DIA T11V F&G RIM = 833.62 INV = 829.62 (12" E) INV = 829.62 (12" SW)
- 13 STA. 105+90.0, 16.0' RT MH TA 4 DIA T1F CL RIM = 833.65 INV = 828.91 (12" W) INV = 828.91 (15" NE)
- 14 STA. 107+00.0, 20.0' LT CB TC T11V F&G RIM = 833.02 INV = 829.02 (12" SE) INV = 829.02 (4" SW)
- 15 NOT USED
- 16 STA. 107+00.0, 20.0' RT CB TA 4 DIA T23F&G RIM = 833.02 INV = 829.02 (4" SW) INV = 828.28 (12" NW) INV = 827.87 (15" SW) INV = 827.27 (15" NE)
- 17 STA. 107+79.5, 22.4' LT INLET TO BE REMOVED
- 18 STA. 107+80.1, 24.4' RT INLET TO BE REMOVED
- 19 NOT USED
- 20 STA. 108+00.0, 20.0' RT CB TA 4 DIA T23F&G RIM = 831.50 INV = 825.32 (15" NE & SW)
- 21 STA. 109+00.0, 20.0' LT CB TC T11V F&G RIM = 828.75 INV = 824.75 (12" SE) INV = 824.75 (4" SW)
- 22 NOT USED
- 23 STA. 109+00.0, 20.0' RT CB TA 4 DIA T23F&G RIM = 828.75 INV = 824.75 (4" SW) INV = 824.26 (12" E) INV = 824.01 (12" NW) INV = 821.97 (15" SW) INV = 821.82 (15" NE)
- 24 STA. 109+10.0, 36.0' RT INLETS TA T8G RIM = 827.60 INV = 824.60 (12" W)

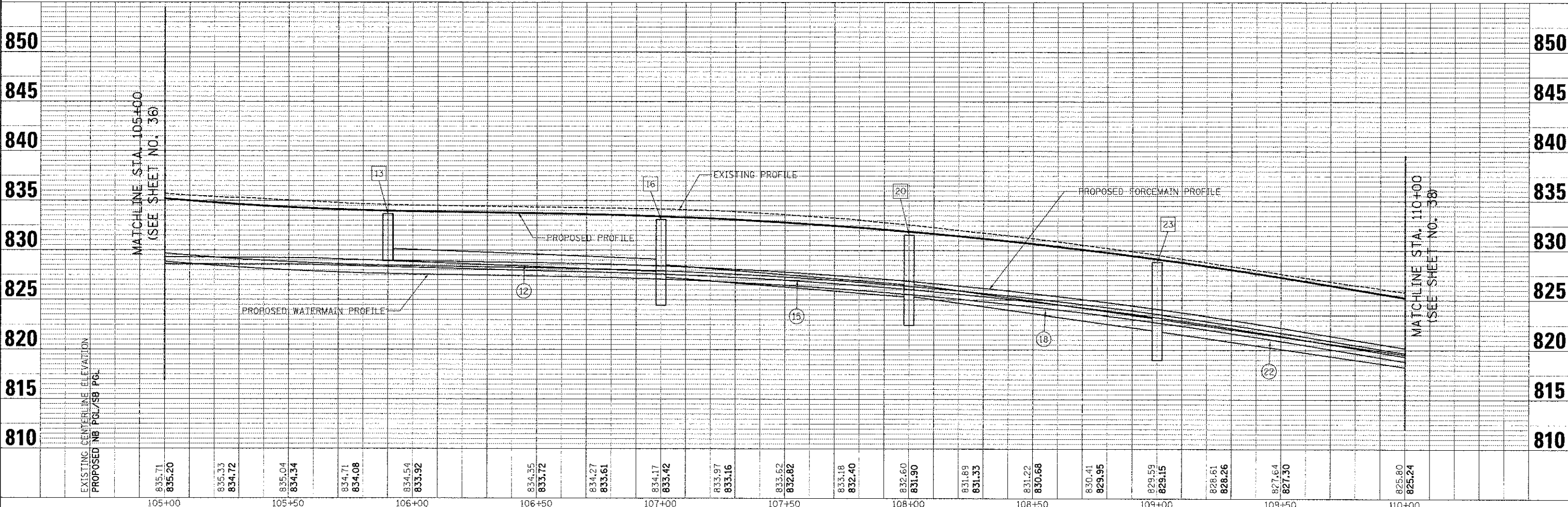


- 7 SEE SHEET NO. 36
- 8 NOT USED
- 9 62' - 12" STORM SEW WM REQ @ 1.00% T.B.F. = 10.2 CU YD
- 10 26' - 12" STORM SEW WM REQ @ 1.00% T.B.F. = 4.0 CU YD
- 11 34' - 12" STORM SEW WM REQ @ 2.10% T.B.F. = 6.6 CU YD
- 12 104' - 15" STORM SEW CL A 2 @ 1.00% T.B.F. = 27.0 CU YD
- 13 37' - 12" STORM SEW WM REQ @ 2.00% T.B.F. = 7.2 CU YD
- 14 NOT USED
- 15 93' - 15" STORM SEW CL A 2 @ 2.10% T.B.F. = 34.9 CU YD
- 16 45' - STORM SEWER REM 10 T.B.F. = 7.9 CU YD
- 17 25' - STORM SEWER REM 12 T.B.F. = 5.0 CU YD
- 18 93' - 15" STORM SEW CL A 2 @ 3.60% T.B.F. = 61.3 CU YD
- 19 37' - 12" STORM SEW WM REQ @ 2.00% T.B.F. = 7.2 CU YD
- 20 NOT USED
- 21 17' - 12" STORM SEW CL A 2 @ 2.00% T.B.F. = 2.9 CU YD
- 22 246' - 15" STORM SEW CL A 2 @ 3.60% T.B.F. = 158.0 CU YD

NOTE:
STRUCTURES 16, 20, AND 23 SHALL BE ROTATED SO THE STRUCTURES ARE PLACED BENEATH THE PAVEMENT.

PLAN SURVEYED, PLOTTED, ALIGNED, CHECKED, AND FILED. NO. DATE

PROFILE SURVEYED, PLOTTED, GRADES CHECKED, STRUCTURE NOTATION OK'D. NO. DATE



FILE NAME ...YDU...02.dgn	USER NAME = djk	DESIGNED - JSM	REVISED -	STATE OF ILLINOIS DEPARTMENT OF TRANSPORTATION	WALNUT LANE DRAINAGE PLAN	SCALE: 1/4" = 20'	SHEET NO. 2 OF 5 SHEETS	STA. 105+00.00 TO STA. 110+00.00	F.A.U. RTE. 2556	SECTION 08-00094-00-PV	COUNTY COOK	TOTAL SHEETS 113	SHEET NO. 37	CONTRACT NO. 63738	ILLINOIS FED. AID PROJECT M-900349D
PLOT SCALE = 20,000S / 1in.		CHECKED - DJK													
PLOT DATE = 8/15/2012		DATE = 8/20/2012													