

|      |                             |      |
|------|-----------------------------|------|
| PLAN | SURVEYED                    | DATE |
|      | PLOTTED                     |      |
|      | GRADES CHECKED              |      |
|      | STRUCTURE ROTATIONS CHECKED |      |
|      | NOTE BOOK NO.               |      |
|      | FILE NAME                   |      |

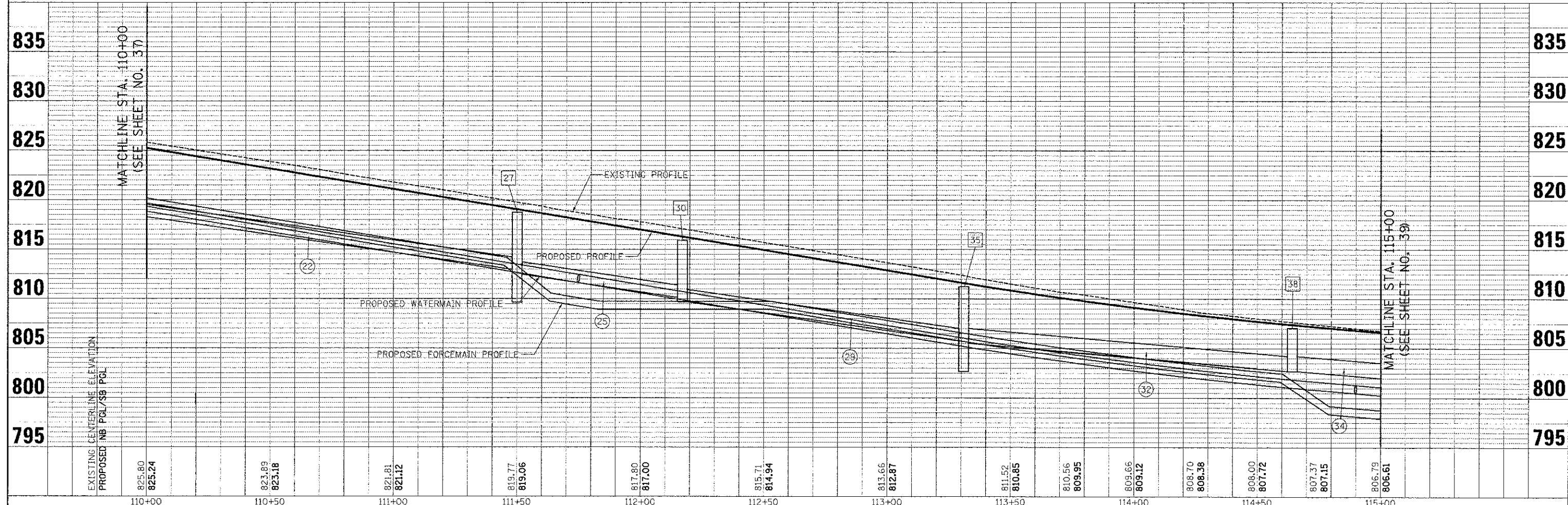
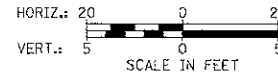
|         |                             |      |
|---------|-----------------------------|------|
| PROFILE | SURVEYED                    | DATE |
|         | PLOTTED                     |      |
|         | GRADES CHECKED              |      |
|         | STRUCTURE ROTATIONS CHECKED |      |
|         | NOTE BOOK NO.               |      |
|         | FILE NAME                   |      |

- 25 STA. 111+50.0, 20.0' LT  
CB TC T11V F&G  
RIM = 818.66  
INV = 814.66 (12" SE)  
INV = 814.66 (4" S)
- 26 NOT USED
- 27 STA. 111+50.0, 20.0' RT  
CB TA 4 DIA T23F&G  
RIM = 818.66  
INV = 814.86 (4" SW)  
INV = 813.92 (12" NW)  
INV = 812.96 (15" SW)  
INV = 812.47 (15" NE)
- 28 STA. 111+70.6, 28.7' RT  
INLET TO BE REMOVED
- 29 STA. 111+85.5, 30.9' RT  
INLETS TA T11V F&G  
RIM = 817.77  
INV = 813.80 (12" NE)
- 30 STA. 112+17.0, 20.0' RT  
MAN TA 4 DIA T1F CL  
RIM = 815.90  
INV = 812.08 (12" SE)  
INV = 810.13 (15" SW)  
INV = 809.68 (15" NE)
- 31 STA. 112+17.0, 32.2' RT  
CB TA 4 DIA T11V F&G  
RIM = 816.58  
INV = 812.48 (12" SW & NW)
- 32 STA. 112+32.9, 29.2' RT  
CB TO BE REMOVED
- 33 STA. 112+40.6, 17.8' LT  
CB TO BE REMOVED
- 34 STA. 113+30.0, 20.0' LT  
CB TC T11V F&G  
RIM = 811.24  
INV = 807.24 (4" S)  
INV = 807.24 (12" E)
- 35 STA. 113+30.0, 20.0' RT  
CB TA T11V F&G  
RIM = 811.24  
INV = 806.50 (12" NW)  
INV = 805.84 (12" E)  
INV = 805.76 (15" SW)  
INV = 805.51 (18" NE)
- 36 STA. 113+52.2, 36.0' RT  
INL TA T11 F&G  
RIM = 810.36  
INV = 806.36 (12" NW)
- 37 STA. 113+52.3, 39.4' RT  
INLET TO BE REMOVED
- 38A STA. 114+63.6, 20.0' LT  
CB TC T11F&G  
RIM = 807.00  
INV = 803.00 (4" S)  
INV = 803.00 (12" E)
- 38 STA. 114+64.2, 16.0' RT  
MAN TA 4 DIA T1F CL  
RIM = 807.07  
INV = 803.22 (12" E)  
INV = 802.83 (12" W)  
INV = 802.72 (18" S & N)
- 39 STA. 114+64.3, 20.0' RT  
CB TC T11F&G  
RIM = 806.98  
INV = 803.23 (12" W)

**NOTE:**

STRUCTURES 27, 30, AND 35 SHALL BE ROTATED SO THE STRUCTURE IS PLACED BENEATH THE PAVEMENT.

- 22 SEE SHEET NO. 37
- 23 37' - 12" STORM SEW WM REQ @ 2.00%  
T.B.F. = 7.2 CU YD
- 24 NOT USED
- 25 65' - 15" STORM SEW WM REQ @ 3.60%  
T.B.F. = 24.4 CU YD
- 26 33' - 12" STORM SEW CL A 2 @ 4.00%  
T.B.F. = 5.4 CU YD
- 27 10' - 12" STORM SEW CL A 2 @ 4.00%  
T.B.F. = 1.6 CU YD
- 28 48' - STORM SEWER REM 10  
T.B.F. = 7.4 CU YD
- 29 112' - 15" STORM SEW CL A 2 @ 3.50%  
T.B.F. = 40.8 CU YD
- 30 37' - 12" STORM SEW WM REQ @ 2.00%  
T.B.F. = 7.2 CU YD
- 31 26' - 12" STORM SEW CL A 2 @ 2.00%  
T.B.F. = 5.9 CU YD
- 32 134' - 18" STORM SEW CL A 2 @ 2.08%  
T.B.F. = 36.0 CU YD
- 33 NOT USED
- 34 71' - 18" STORM SEW WM REQ @ 2.10%  
T.B.F. = 11.9 CU YD
- 35A 34' - 12" STORM SEW WM REQ @ 0.50%  
T.B.F. = 5.9 CU YD
- 36B 2' - 12" STORM SEW CL A 1 @ 0.50%  
T.B.F. = 0.3 CU YD



|                           |                            |                  |          |   |                                      |                                       |                          |                                  |                    |                |  |  |
|---------------------------|----------------------------|------------------|----------|---|--------------------------------------|---------------------------------------|--------------------------|----------------------------------|--------------------|----------------|--|--|
| FILE NAME = ...DUU.03.dgn | USER NAME = djc            | DESIGNED - JSM   | REVISD - | <b>STATE OF ILLINOIS<br/>DEPARTMENT OF TRANSPORTATION</b> | <b>WALNUT LANE<br/>DRAINAGE PLAN</b> | F.A.U. = 2556                         | SECTION = 08-00094-00-PV | COUNTY = COOK                    | TOTAL SHEETS = 113 | SHEET NO. = 38 |  |  |
|                           | PLOT SCALE = 20.0002" / 1" | DRAWN - JSM      | REVISD - |   |                                      | SCALE: 1/4" = 20'                     | SHEET NO. 3 OF 5 SHEETS  | STA. 110+00.00 TO STA. 115+00.00 | CONTRACT NO. 63738 |                |  |  |
|                           | PLOT DATE = 8/15/2012      | CHECKED - DJK    | REVISD - |   |                                      | ILLINOIS FED. AID PROJECT M-9003(494) |                          |                                  |                    |                |  |  |
|                           |                            | DATE = 8/20/2012 | REVISD - |   |                                      |                                       |                          |                                  |                    |                |  |  |