

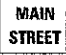


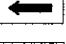




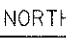
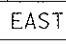
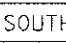

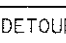
ROUTE MARKERS

-  FOR U.S. ROUTES
M1-40-2424
-  FOR ILLINOIS ROUTES
M1-50-2424
-  R.R. UNMARKED ROUTES
SPECIAL 24" x 18" VARIABLE
4" BLACK LETTERS ON WHITE
REFLECTIVE BACKGROUND

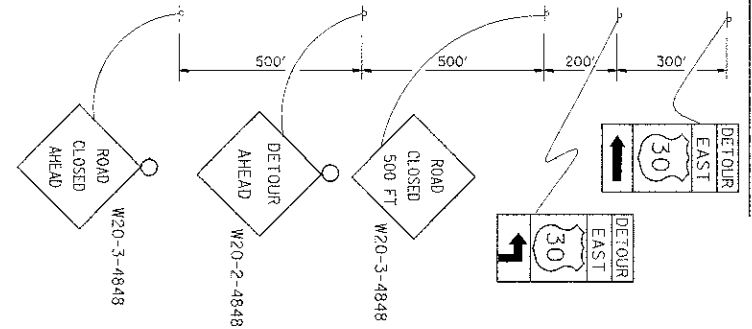
ARROWS SIGNS

-  M5-1L-2115
-  M5-1R-2115
-  M6-1-2115
-  M6-1-2115
-  M6-3-2115

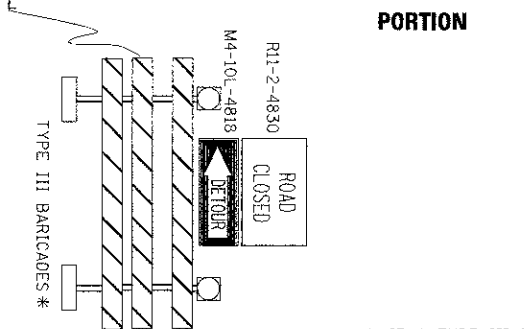
CARDINAL DIRECTION & DETOUR SIGNS

-  NORTH M3-1-2412
-  EAST M3-2-2412
-  SOUTH M3-3-2412
-  WEST M3-4-2412
-  DETOUR M4-8-2412

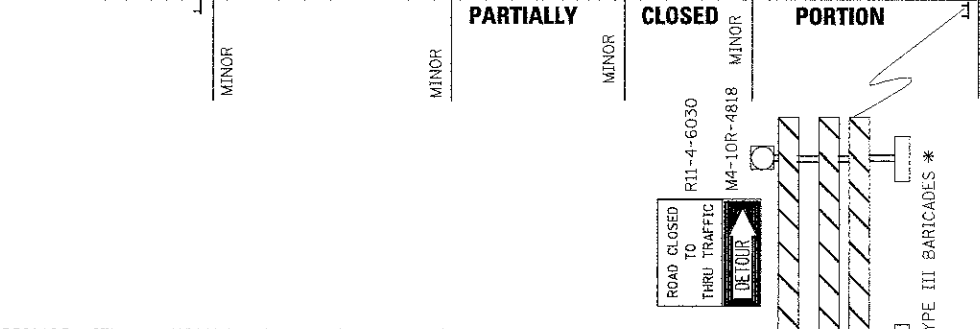
STATE ROUTE



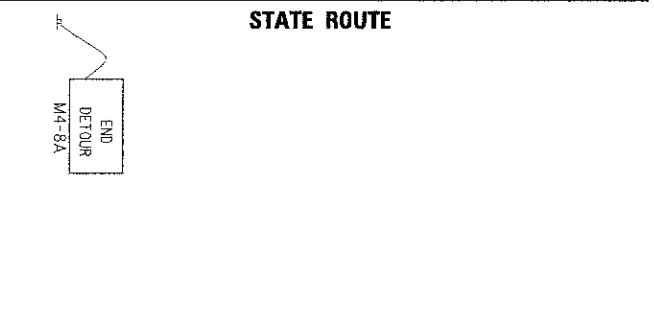
COMPLETELY CLOSED PORTION



PARTIALLY CLOSED PORTION



STATE ROUTE



* IF A TYPE III BARRICADE WITH AN ATTACHED SIGN PANEL WHICH MEETS NCHRP 350 REQUIREMENTS IS NOT AVAILABLE, THE SIGNS SHALL BE MOUNTED, ABOVE THE BARRICADES, ON SEPARATE SIGNS SUPPORTS THAT MEET NCHRP 350 REQUIREMENTS.

FILE NAME	USER NAME	DESIGNED	REVISED
DATE	DATE	DATE	DATE

**STATE OF ILLINOIS
DEPARTMENT OF TRANSPORTATION**

**DETOUR SIGNING
FOR CLOSING STATE HIGHWAYS**

F.A.U. SITE	SECTION	COUNTY	TOTAL SHEETS	SHEET NO.
2556	08-00094-00-PV	COOK	113	92A
TC-21		CONTRACT NO. 63738		
FED. ROAD DIST. NO. 1 ILLINOIS FED. AID PROJECT M-9003(494)				

SCALE: NONE SHEET NO. 1 OF 1 SHEETS STA. TO STA.