

GENERAL NOTES

All structural steel shall conform to AASHTO Classification M-270 Gr. 36, unless otherwise noted.

Plan dimensions and details relative to existing plans are subject to nominal construction variations. The Contractor shall field verify existing dimensions and details affecting new construction and make necessary approved adjustments prior to construction or ordering of materials. Such variations shall not be cause for additional compensation for a change in scope of the work, however, the Contractor will be paid for the quantity actually furnished at the unit price bid for the work.

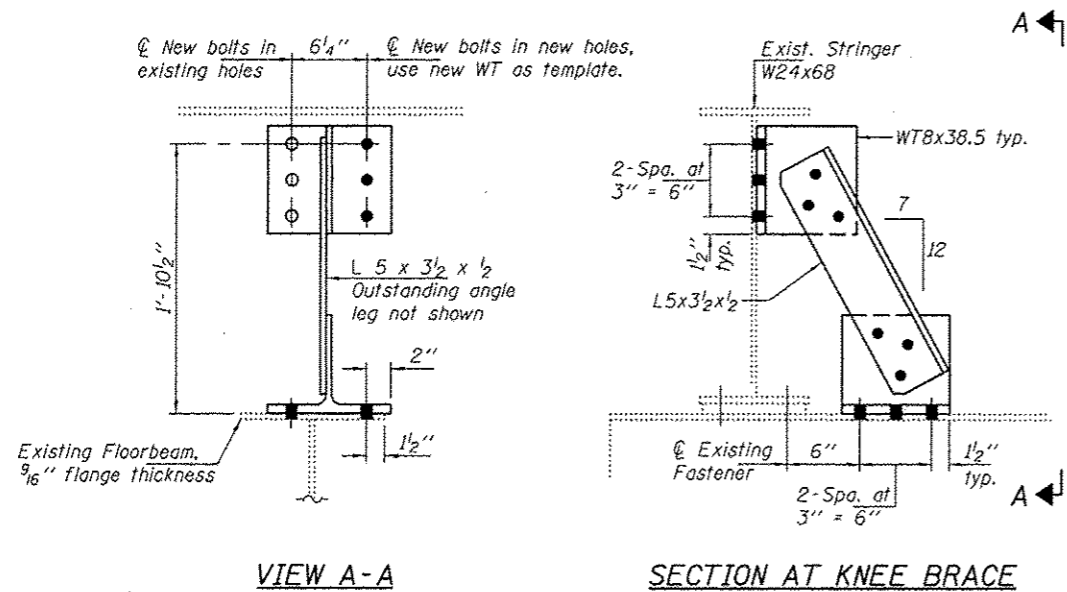
Cost of removal and re-installation of all members necessary to complete the work as detailed on the plans and as specified in the Special Provisions shall be included with Structural Steel Repair.

The existing structural steel coating contains lead. The Contractor shall take appropriate precautions to deal with the presence of lead on this project.

All structural steel shall be shop painted with the inorganic zinc rich primer per AASHTO M300, Type 1. Cost included with Structural Steel Repair.

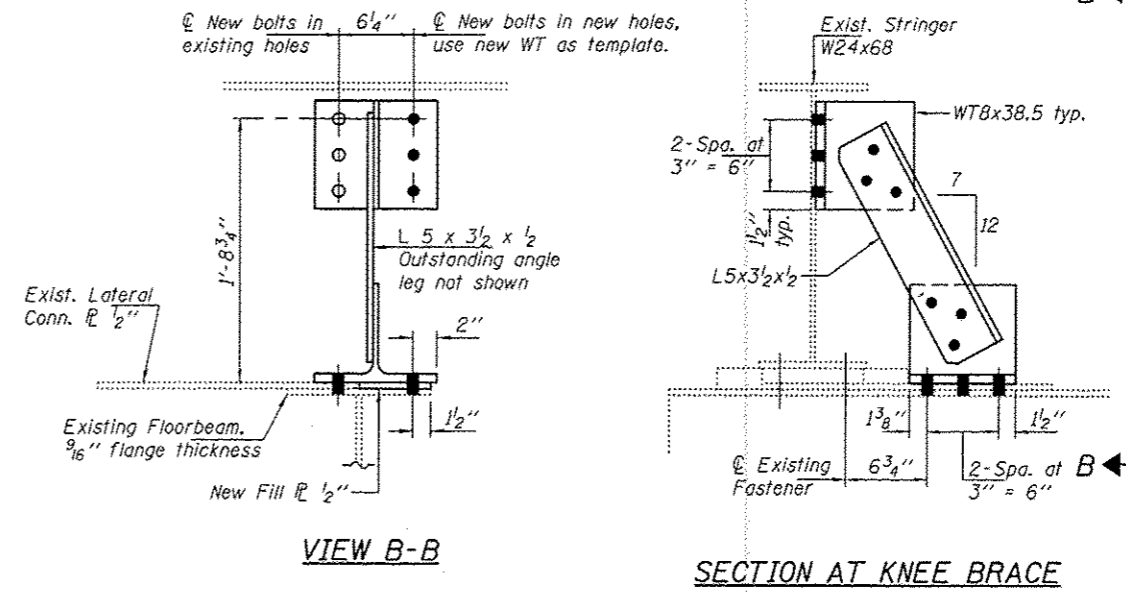
Existing structural steel that will be in contact with new structural steel shall be cleaned and painted prior to erection as required by the Special Provision "Cleaning and Painting Contact Surface Areas of Existing Steel Structures".

Fasteners shall be high strength bolts. Bolts 3/4"φ, open holes 13/16"φ, unless otherwise noted.



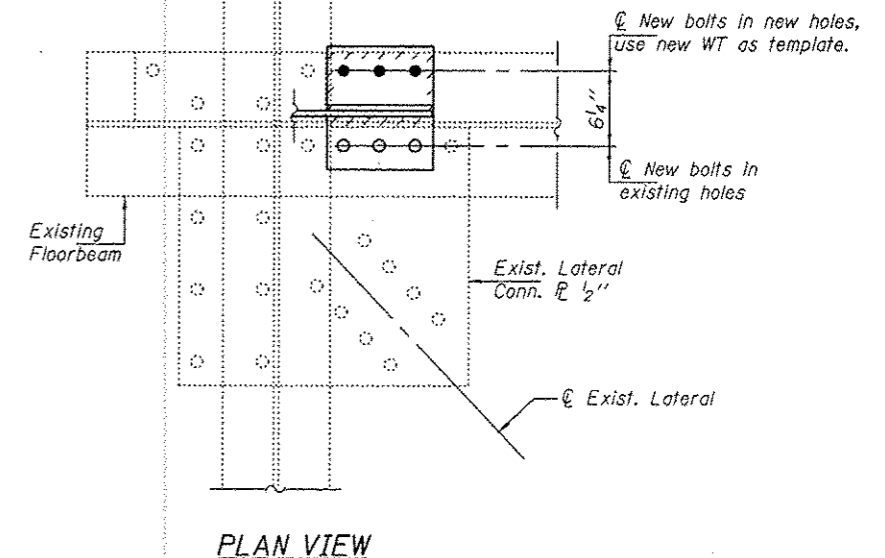
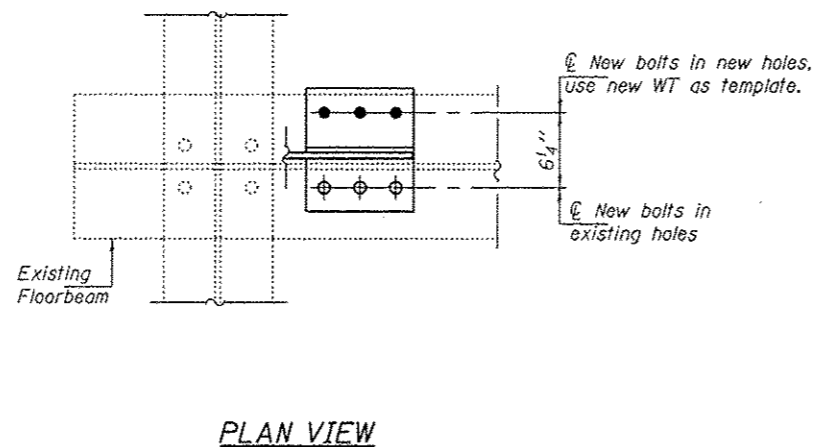
**KNEE BRACE REPLACEMENT C
WITHOUT LATERAL CONNECTION**

Note: Dimensions based on existing Knee Brace, Mk. 330C.



**KNEE BRACE REPLACEMENT B
WITH LATERAL CONNECTION**

Note: Dimensions based on existing Knee Brace, Mk. 330B



Notes:
For knee brace replacement locations, see sheet 1 of 6.
For details of new knee braces, see sheet 3 of 6. Knee braces left and right are identical, location of fill plates and field drilled holes vary.
15/16"φ Holes for 7/8"φ HS A325 Bolts.
Reference to knee brace mark numbers are from 1965 original shop drawings, sheet no. 330. See sheet 4A of 6.

DESIGNED - ATH	EXAMINED - <i>Timothy A. [Signature]</i>	DATE - SEPTEMBER 19, 2012	STATE OF ILLINOIS DEPARTMENT OF TRANSPORTATION		KNEE BRACE REPAIR DETAILS SN 081-0011		F.A. RTE. 80	SECTION (81-1B)M-3	COUNTY ROCK ISLAND	TOTAL SHEETS 9	SHEET NO. 5
CHECKED - MKC	PASSED - <i>Carl [Signature]</i>		SHEET NO. 2 OF 6 SHEETS		CONTRACT NO. 64E33		ILLINOIS FED. AID PROJECT				
DRAWN - Kyle M. Steffen	ACTING ENGINEER OF BRIDGES AND STRUCTURES										
CHECKED - ATH MKC											