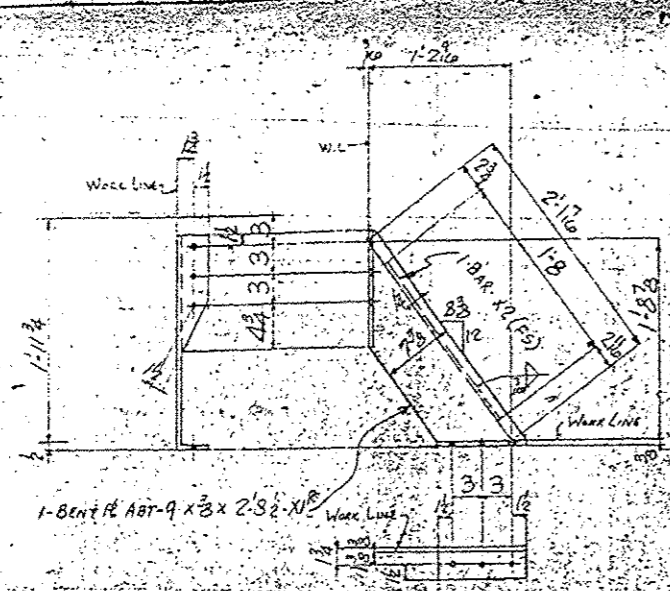
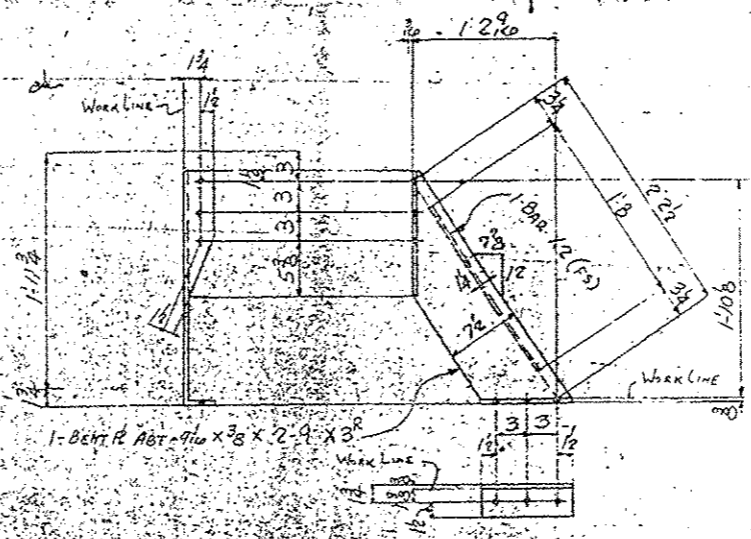


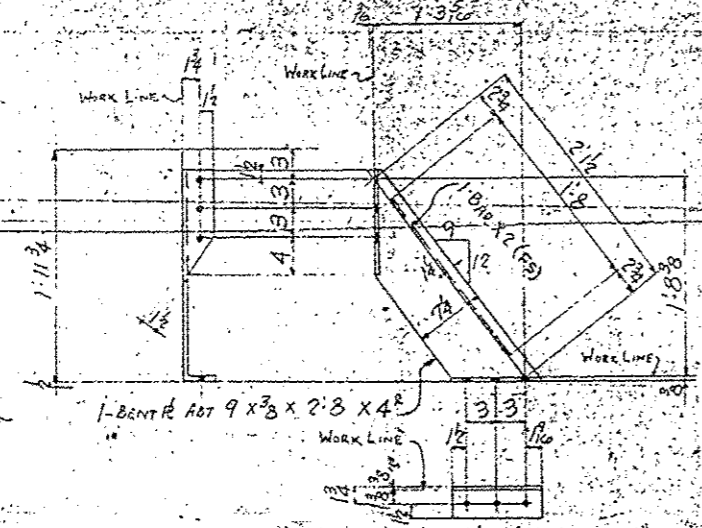
10	123
11	
12	
13	
14	
15	
16	
17	
18	
19	



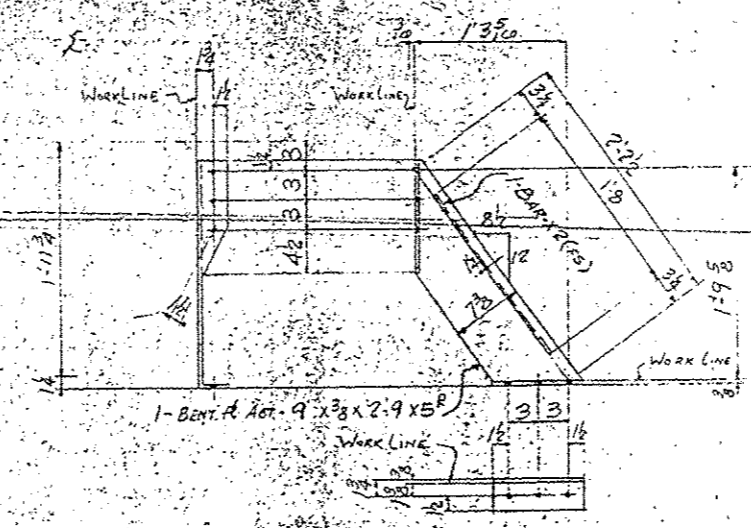
22 - KNEE BRACES - 330A^R
 22 - KNEE BRACES - 330A^L



5 - KNEE BRACES - 330C^R
 5 - KNEE BRACES - 330C^L



40 - KNEE BRACES - 330B^R
 40 - KNEE BRACES - 330B^L



18 - KNEE BRACES - 330D^R
 18 - KNEE BRACES - 330D^L

FOR INFORMATION ONLY

Open Holes are for High Strength Structural Bolts Unless Noted A. NO PAINT, within 3" of Holes for High Strength Structural Bolts

MCDJEEK: E MASTER			
APPROVED			
DATE	BY	DATE	BY
3-16-12	PS	3-16-12	GNC
REV. #1			
REV. #2			

All Holes Punched Full Size FOR GEN. NOTES SEE SHG GNI

FAB PLANT
CLINTON

DESIGNED BY	DATE	CHECKED BY	DATE
PS	3-16-12	GNC	3-16-12
REVISIONS	△	△	△

ALLIED STRUCTURAL STEEL COMPANIES
 CLINTON BRIDGE CO. - BRIDGE STRUCTURAL STEEL CORP. - MIDLAND STRUCTURAL STEEL CORP.
 ENGINEERS - FABRICATORS - ERECTORS OF BUILDINGS AND BRIDGES
 20 NORTH WACKER DRIVE CHICAGO 5, ILLINOIS

DETAILS OF **KNEE BRACE**
 STRUCTURE **PROJ I-80-9(31)710 MISSISSIPPI RIVER BRIDGE**
 LOCATION **LE CLAIRNE IOWA**
 OWNER **STATE OF IOWA STATE HIGHWAY DIVISION**
 CUSTOMER

CONTRACT **3100 (FABCOE 194) SHEET 330**
WAS 3047

51	2	3	5	2
52	3	5	2	
53	3	5	2	
54	3	5	2	
55	3	5	2	
56	3	5	2	
57	3	5	2	
58	3	5	2	
59	3	5	2	
60	3	5	2	
61	3	5	2	
62	3	5	2	
63	3	5	2	
64	3	5	2	
65	3	5	2	
66	3	5	2	
67	3	5	2	
68	3	5	2	
69	3	5	2	
70	3	5	2	
71	3	5	2	
72	3	5	2	
73	3	5	2	
74	3	5	2	
75	3	5	2	
76	3	5	2	
77	3	5	2	
78	3	5	2	
79	3	5	2	
80	3	5	2	
81	3	5	2	
82	3	5	2	
83	3	5	2	
84	3	5	2	
85	3	5	2	
86	3	5	2	
87	3	5	2	
88	3	5	2	
89	3	5	2	
90	3	5	2	
91	3	5	2	
92	3	5	2	
93	3	5	2	
94	3	5	2	
95	3	5	2	
96	3	5	2	
97	3	5	2	
98	3	5	2	
99	3	5	2	
100	3	5	2	