

STATE OF ILLINOIS
DEPARTMENT OF TRANSPORTATION
DIVISION OF HIGHWAYS

**PROPOSED
HIGHWAY PLANS**

FAP ROUTE 5 (US BUS 20)
SECTION (19VB-1)D
PROJECT: ACF-0005(054)
BRIDGE DECK REPLACEMENT
STEPHENSON COUNTY

C-92-027-12

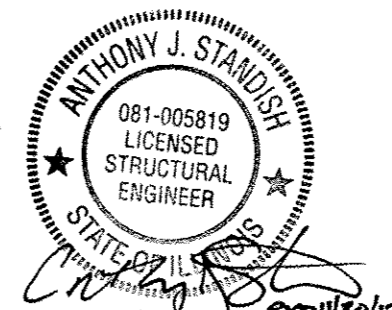
F.A.P. RTE.	SECTION	COUNTY	TOTAL SHEETS	SHEET NO.
5	(19VB-1)D	STEPHENSON	73	1
FED. ROAD DIST. NO. 2		ILLINOIS	CONTRACT NO. 64E76	

FOR INDEX OF SHEETS, SEE SHEET NO. 2
FOR STATE STANDARDS, SEE SHEET NO. 2

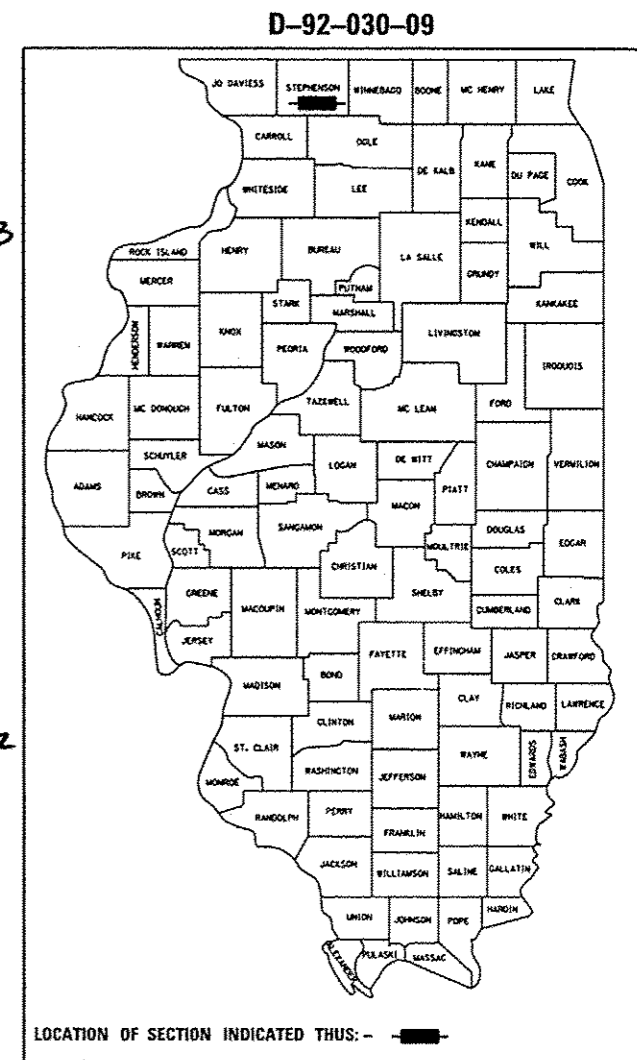
FUNCTIONAL CLASSIFICATION
RURAL MINOR ARTERIAL (NON-URBAN)
2015 ADT = 10,425
2035 ADT = 15,500
POSTED AND DESIGN SPEED LIMIT 55 MPH



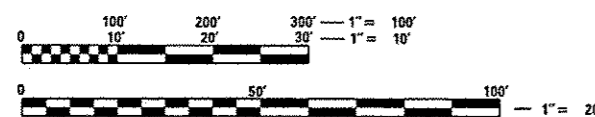
MARC A. GRIGAS, P.E.
THIS STAMP APPLIES TO
DRAWINGS NO. 1-31, 59-73



ANTHONY J. STANDISH, P.E., S.E.
THIS STAMP APPLIES TO
DRAWINGS NO. 32-58



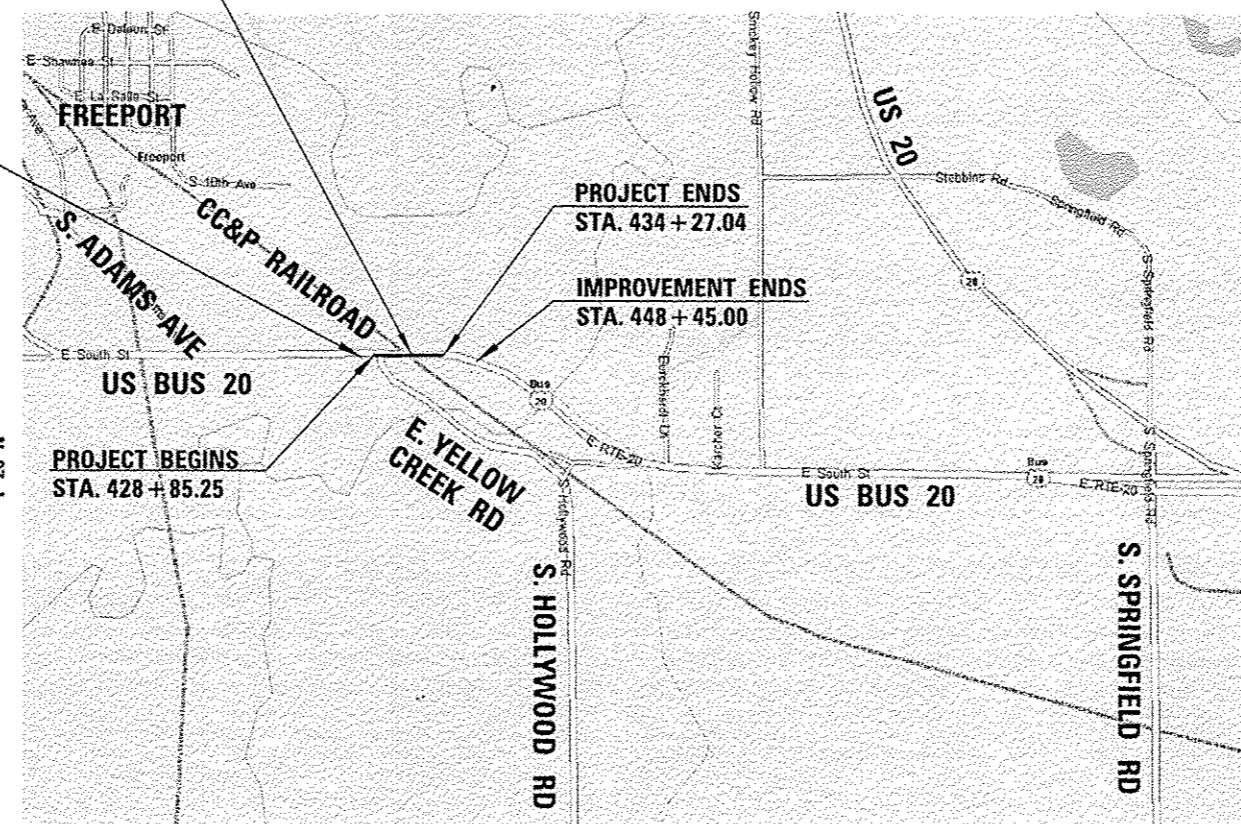
SA STRAND ASSOCIATES
1170 SOUTH HOUBOLT ROAD
JOLIET, ILLINOIS 60431
815 744-4200
IDFPR NO. 184-001273



FULL SIZE PLANS HAVE BEEN PREPARED USING STANDARD ENGINEERING SCALES. REDUCED SIZED PLANS WILL NOT CONFORM TO STANDARD SCALES. IN MAKING MEASUREMENTS ON REDUCED PLANS, THE ABOVE SCALES MAY BE USED.

J.U.L.I.E.
JOINT UTILITY LOCATION INFORMATION FOR EXCAVATION
1-800-892-0123
OR 811

FREEPORT TOWNSHIP SECTION 4
PROJECT ENGINEER: AHMAD EL-AHMAD (815) 284-5944
PROJECT MANAGER: MASOOD AHMAD



1" = 0.27 MI.

GROSS LENGTH = 542 FEET = 0.103 MILES
NET LENGTH = 542 FEET = 0.103 MILES

STATE OF ILLINOIS
DEPARTMENT OF TRANSPORTATION
DIVISION OF HIGHWAYS
SUBMITTED August 8 2012
Eric S. Thekildan
DEPUTY DIRECTOR OF HIGHWAYS, REGION ENGINEER
October 5 2012
John D. Baranelli, P.E.
acting ENGINEER OF DESIGN AND ENVIRONMENT
October 5 2012
William R. Frey, Jr.
acting DIRECTOR OF HIGHWAYS, CHIEF ENGINEER

PRINTED BY THE AUTHORITY
OF THE STATE OF ILLINOIS