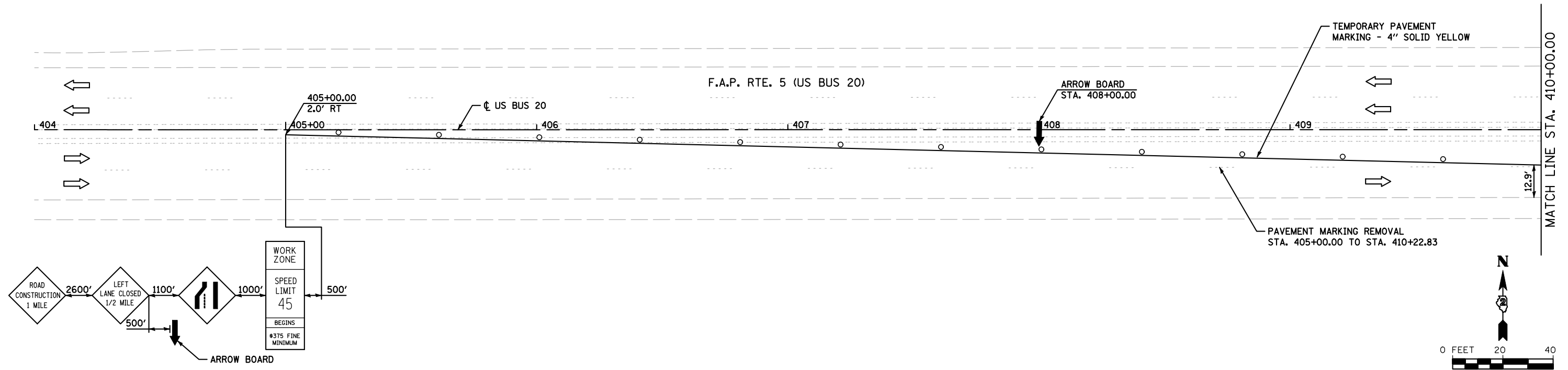
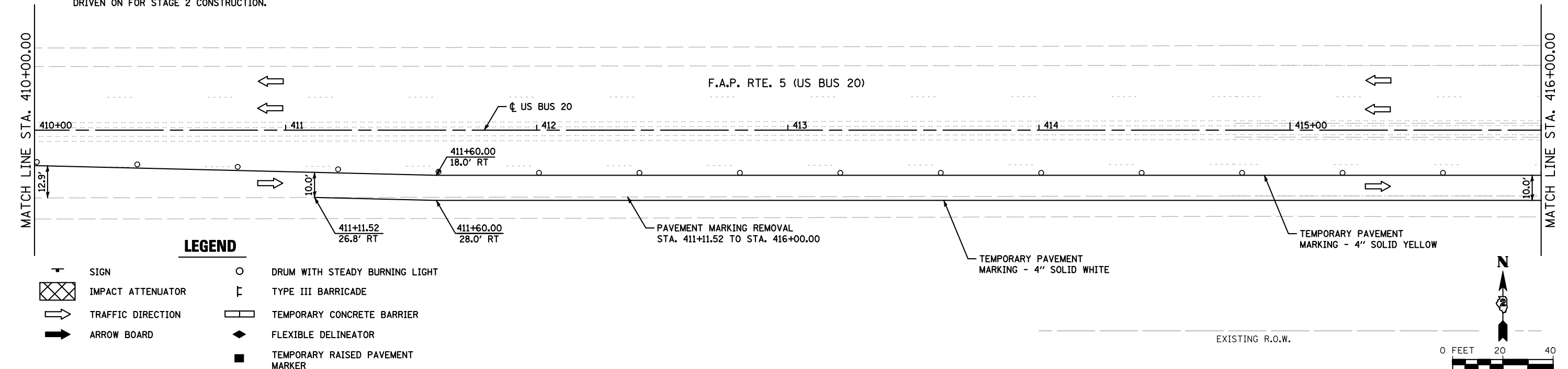


STAGE 1



STAGE 1 NOTES:

1. INSTALL TEMPORARY TRAFFIC SIGNS ACCORDING TO STANDARD 701431.
2. CONSTRUCT THE NORTH SIDE OF THE BRIDGE INCLUDING SHOULDERS AND GUARDRAIL.
3. INSTALL TEMPORARY CONCRETE BARRIER ACCORDING TO STANDARD 704001.
4. DRIVE TEMPORARY SHEET PILING AS REQUIRED.
5. HOT-MIX ASPHALT SURFACE REMOVAL, 1 1/2" FROM STA. 415+00.00 TO STA. 428+85.04 LT, STA. 433+48.34 TO STA. 448+45.00 LT USING STANDARD 701421.
6. PLACE 1 1/2" HOT-MIX ASPHALT SURFACE COURSE MIX "C", N50 FROM STA. 415+00.00 TO STA. 428+85.04 LT, STA. 433+48.34 TO STA. 448+45.00 LT WHERE SHOULDER WILL BE DRIVEN ON FOR STAGE 2 CONSTRUCTION.



LEGEND

- | | | | |
|--|-------------------|--|----------------------------------|
| | SIGN | | DRUM WITH STEADY BURNING LIGHT |
| | IMPACT ATTENUATOR | | TYPE III BARRICADE |
| | TRAFFIC DIRECTION | | TEMPORARY CONCRETE BARRIER |
| | ARROW BOARD | | FLEXIBLE DELINEATOR |
| | | | TEMPORARY RAISED PAVEMENT MARKER |

FILE NAME = s:\p1\6380--6395\6346\025\macro\cadd sheets\2264E76-ah1-staging-01.dgn

SA STRAND ASSOCIATES
1170 SOUTH HOUBOLT ROAD
JOLIET, ILLINOIS 60431
(815) 744-4200

USER NAME = brianf	DESIGNED - EMD	REVISED -
PLOT SCALE = 40.0000' / IN.	DRAWN - BJF	REVISED -
PLOT DATE = 8/6/2012	CHECKED - MAG	REVISED -
	DATE - 03/13/12	REVISED -

**STATE OF ILLINOIS
DEPARTMENT OF TRANSPORTATION**

**SUGGESTED MAINTENANCE OF TRAFFIC
STAGE I**

SCALE: AS SHOWN SHEET NO. OF SHEETS STA. 404+00.00 TO STA. 416+00.00

F.A.P. RTE.	SECTION	COUNTY	TOTAL SHEETS	SHEET NO.
5	(19VB-1D)	STEPHENSON	73	21
CONTRACT NO. 64E76				
FED. ROAD DIST. NO. 2 ILLINOIS FED. AID PROJECT				