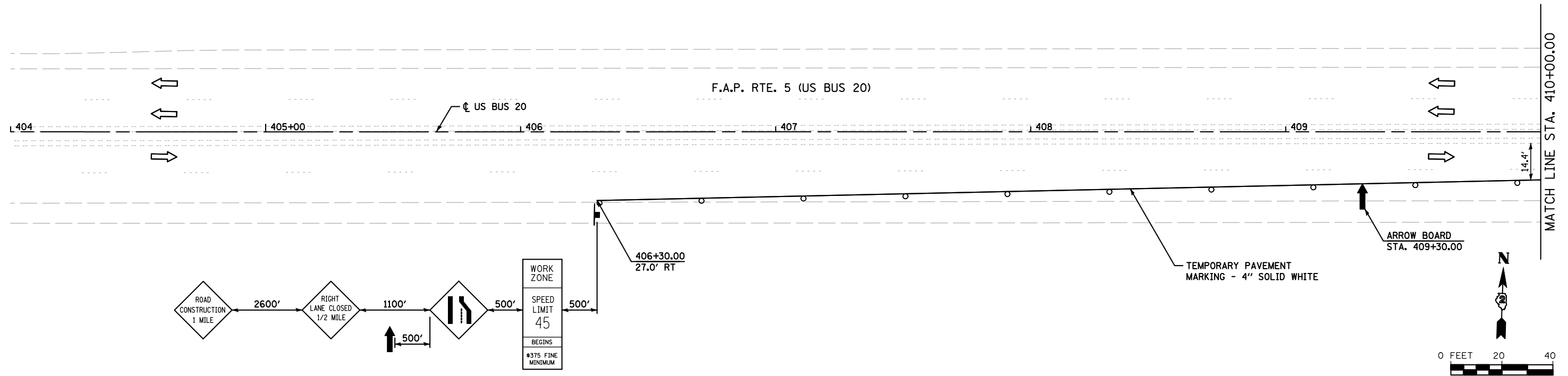
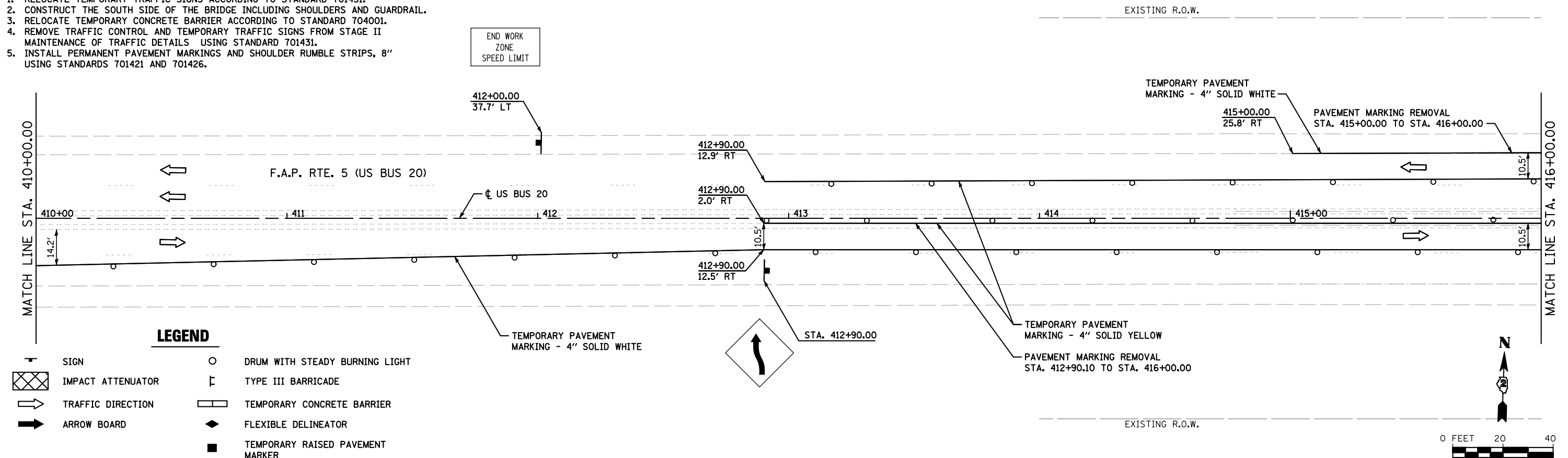


STAGE 2



STAGE 2 NOTES:

1. RELOCATE TEMPORARY TRAFFIC SIGNS ACCORDING TO STANDARD 701431.
2. CONSTRUCT THE SOUTH SIDE OF THE BRIDGE INCLUDING SHOULDERS AND GUARDRAIL.
3. RELOCATE TEMPORARY CONCRETE BARRIER ACCORDING TO STANDARD 704001.
4. REMOVE TRAFFIC CONTROL AND TEMPORARY TRAFFIC SIGNS FROM STAGE II MAINTENANCE OF TRAFFIC DETAILS USING STANDARD 701431.
5. INSTALL PERMANENT PAVEMENT MARKINGS AND SHOULDER RUMBLE STRIPS, 8\"/>



LEGEND

- | | | | |
|--|-------------------|--|----------------------------------|
| | SIGN | | DRUM WITH STEADY BURNING LIGHT |
| | IMPACT ATTENUATOR | | TYPE III BARRICADE |
| | TRAFFIC DIRECTION | | TEMPORARY CONCRETE BARRIER |
| | ARROW BOARD | | FLEXIBLE DELINEATOR |
| | | | TEMPORARY RAISED PAVEMENT MARKER |

FILE NAME = s:\p1\6380--6395\6346\025\macro\cadd sheets\PI68K77-ahc-stage2-01.dgn

SA STRAND ASSOCIATES
 1170 SOUTH HOUBOLT ROAD
 JOLIET, ILLINOIS 60431
 (815) 744-4200

USER NAME = briant
 DESIGNED - EMD
 DRAWN - BJF
 CHECKED - MAG
 DATE - 03/13/12
 PLOT SCALE = 40.0000' / IN.
 PLOT DATE = 8/6/2012

REVISED -
 REVISED -
 REVISED -
 REVISED -

**STATE OF ILLINOIS
 DEPARTMENT OF TRANSPORTATION**

**SUGGESTED MAINTENANCE OF TRAFFIC
 STAGE II**

SCALE: AS SHOWN SHEET NO. OF SHEETS STA. 404+00.00 TO STA. 416+00.00

F.A.P. RTE.	SECTION	COUNTY	TOTAL SHEETS	SHEET NO.
5	(19VB-1)D	STEPHENSON	73	26
CONTRACT NO. 64E76				
FED. ROAD DIST. NO. 2 ILLINOIS FED. AID PROJECT				