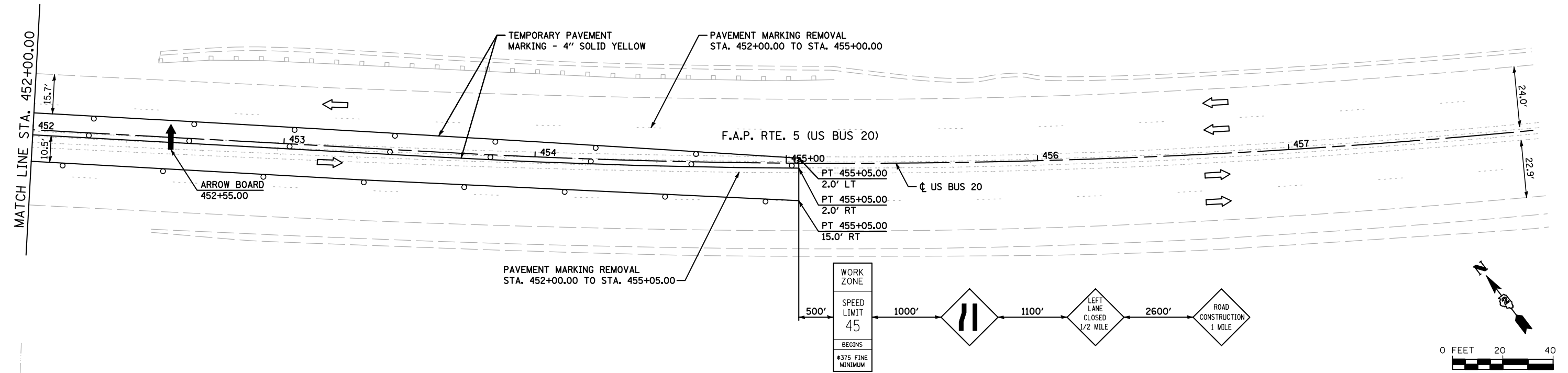


STAGE 2



STAGE 2 NOTES:

1. RELOCATE TEMPORARY TRAFFIC SIGNS ACCORDING TO STANDARD 701431.
2. CONSTRUCT THE SOUTH SIDE OF THE BRIDGE INCLUDING SHOULDERS AND GUARDRAIL.
3. RELOCATE TEMPORARY CONCRETE BARRIER ACCORDING TO STANDARD 704001.
4. REMOVE TRAFFIC CONTROL AND TEMPORARY TRAFFIC SIGNS FROM STAGE II MAINTENANCE OF TRAFFIC DETAILS USING STANDARD 701431.
5. INSTALL PERMANENT PAVEMENT MARKINGS AND SHOULDER RUMBLE STRIPS, 8" USING STANDARDS 701421 AND 701426.

LEGEND

- | | | | |
|--|-------------------|--|----------------------------------|
| | SIGN | | DRUM WITH STEADY BURNING LIGHT |
| | IMPACT ATTENUATOR | | TYPE III BARRICADE |
| | TRAFFIC DIRECTION | | TEMPORARY CONCRETE BARRIER |
| | ARROW BOARD | | FLEXIBLE DELINEATOR |
| | | | TEMPORARY RAISED PAVEMENT MARKER |

FILE NAME = s:\p1\6380--6395\6346\025\microsa\cadd\sheet\PI168K77-ahtr-staging2-05.dgn



| | | | |
|---|-----------------------------|-----------------|-----------|
| 1170 SOUTH HOUBOLT ROAD JOLIET, ILLINOIS 60431 (815) 744-4200 | USER NAME = brianf | DESIGNED - EMD | REVISED - |
| | | DRAWN - BJF | REVISED - |
| | PLOT SCALE = 40.0000' / IN. | CHECKED - MAG | REVISED - |
| | PLOT DATE = 8/6/2012 | DATE - 03/13/12 | REVISED - |

**STATE OF ILLINOIS
DEPARTMENT OF TRANSPORTATION**

**SUGGESTED MAINTENANCE OF TRAFFIC
STAGE II**

SCALE: AS SHOWN SHEET NO. OF SHEETS STA. 452+00.00 TO STA. 458+00.00

| F.A.P. RTE. | SECTION | COUNTY | TOTAL SHEETS | SHEET NO. |
|---|-----------|------------|--------------|-----------|
| 5 | (19VB-1)D | STEPHENSON | 73 | 30 |
| CONTRACT NO. 64E76 | | | | |
| FED. ROAD DIST. NO. 2 ILLINOIS FED. AID PROJECT | | | | |