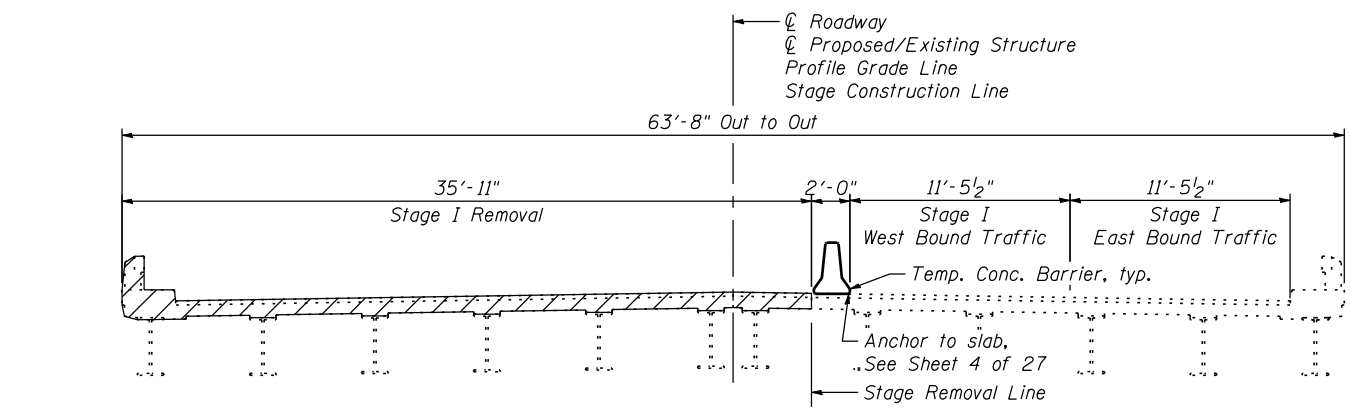
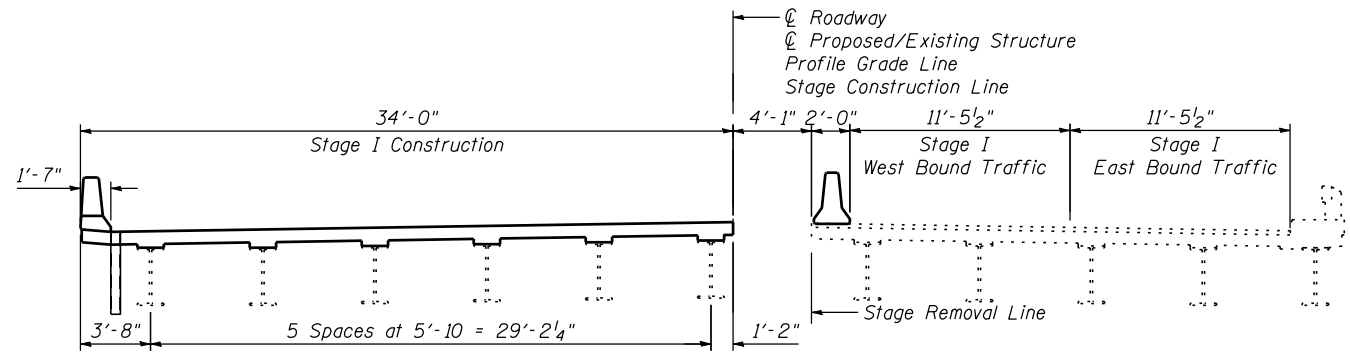


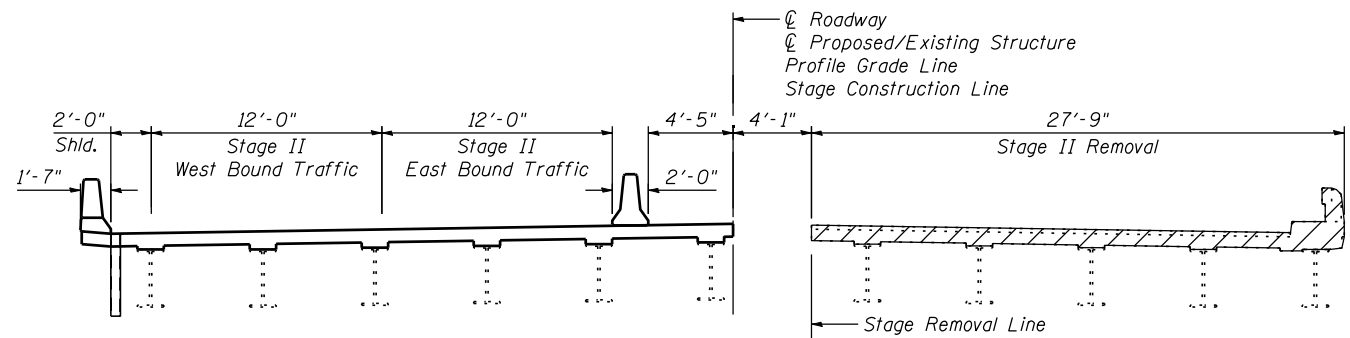
FILE NAME = s:\p1\6380--6395\6346\025\micro\cadd sheets\structural\plans\0890007-64E76-003-GD.dgn



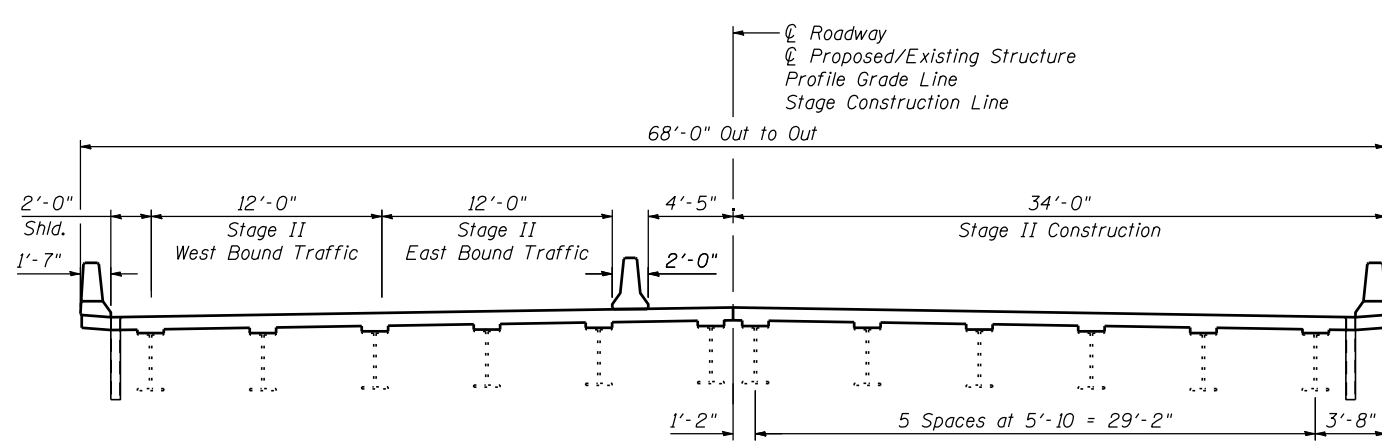
STAGE I REMOVAL



STAGE I CONSTRUCTION

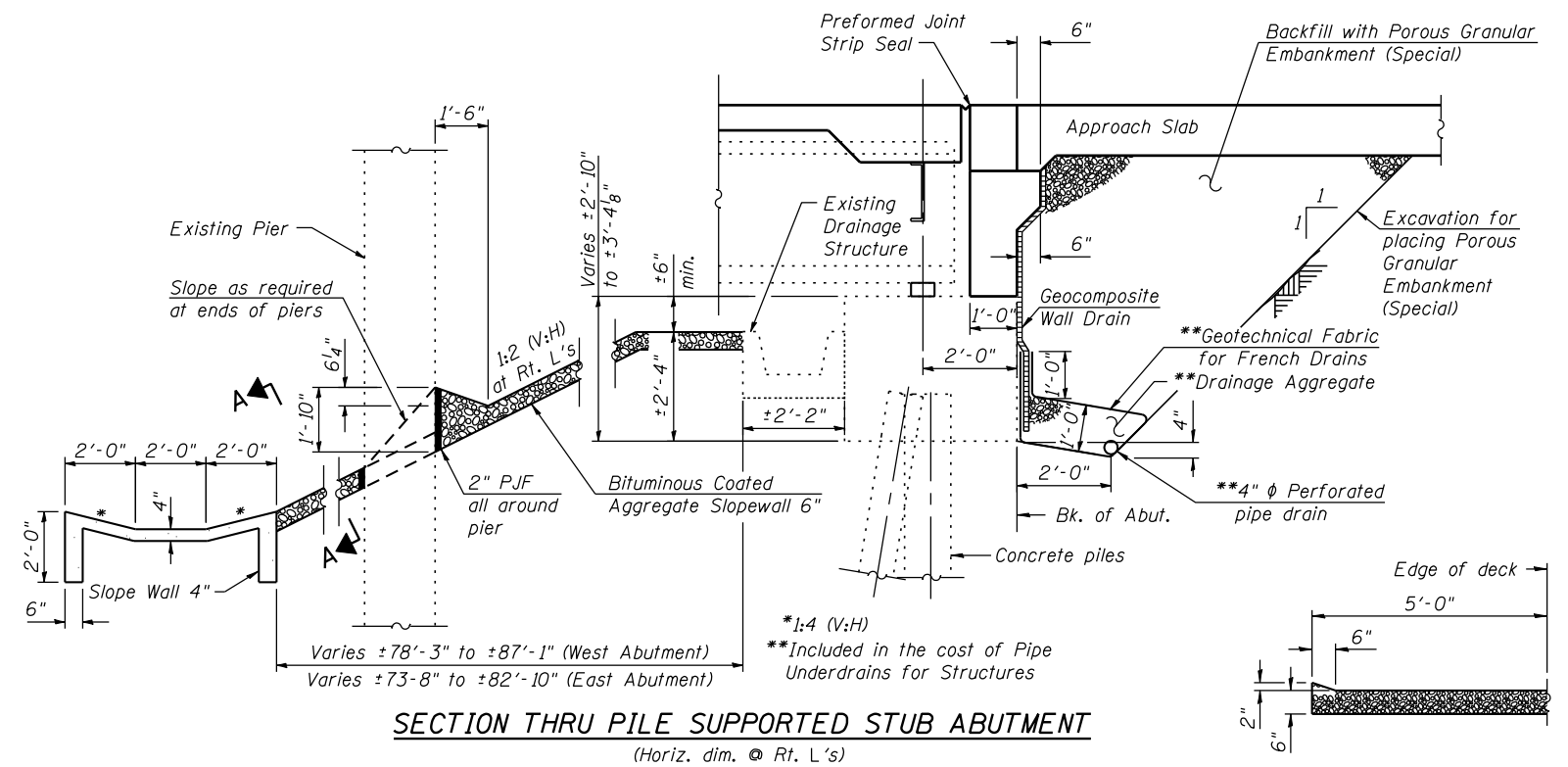


STAGE II REMOVAL



STAGE II CONSTRUCTION

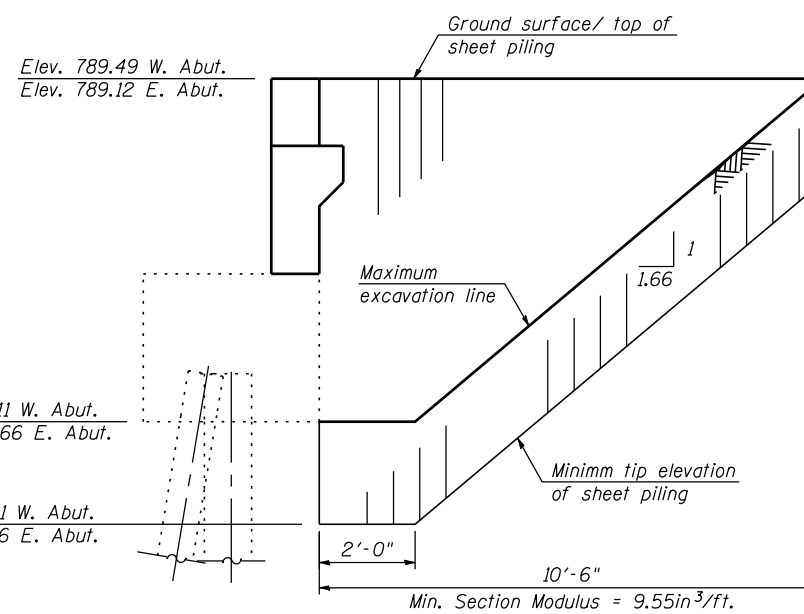
Note:
 All cross sections are looking East.
 For quantity of Temporary Concrete Barrier see Roadway Plans.
 Hatched area indicates Removal of Existing Concrete Deck.
 Removal of existing wearing surface and existing expansive materials are included in Removal of Existing Concrete Deck.



SECTION THRU PILE SUPPORTED STUB ABUTMENT
 (Horiz. dim. @ Rt. L's)

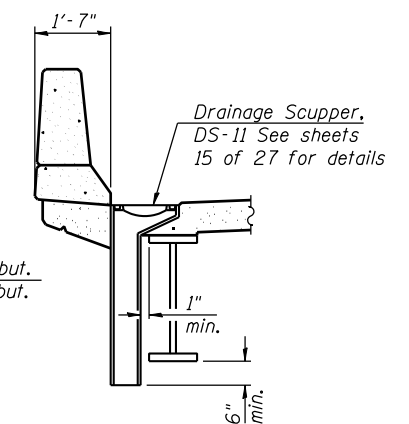
Note:
 All drainage system components shall extend to 2'-0" from the end of each wingwall except an outlet pipe shall extend until intersecting with the side slopes. The pipes shall drain into concrete headwalls. (See Article 601.05 of the Standard Specifications and Highway Standard 601101).
 Beam end plates not shown for clarity.

SECTION A-A
 At Edge of Slopewall

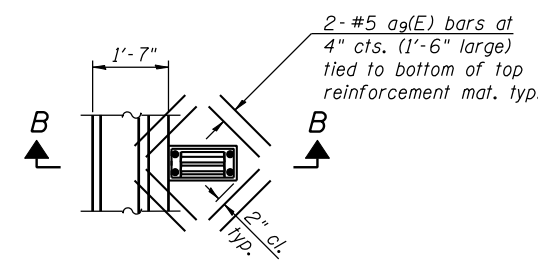


TEMPORARY SHEET PILING
 (Horiz. dim. @ Rt. L's)

Note:
 If the Contractor chooses to alter the temporary cantilevered sheet piling design requirements shown on the plans, a design submittal including plan details and calculations will be required for review and acceptance by the Engineer.



SECTION B-B



PLAN

Note:
 Cut longitudinal reinforcement to clear drainage scuppers.

USER NAME = brianf	DESIGNED <i>KDH</i>	REVISED -
PLOT SCALE =	CHECKED <i>AJS</i>	REVISED -
PLOT DATE = 8/6/2012	DRAWN <i>BJF</i>	REVISED -
	CHECKED <i>RRD</i>	REVISED -

F.A.P. RTE.	SECTION	COUNTY	TOTAL SHEETS	SHEET NO.
5	(19VB-1D)	STEPHENSON	73	34
ILLINOIS FED. AID PROJECT			CONTRACT NO. 64E76	