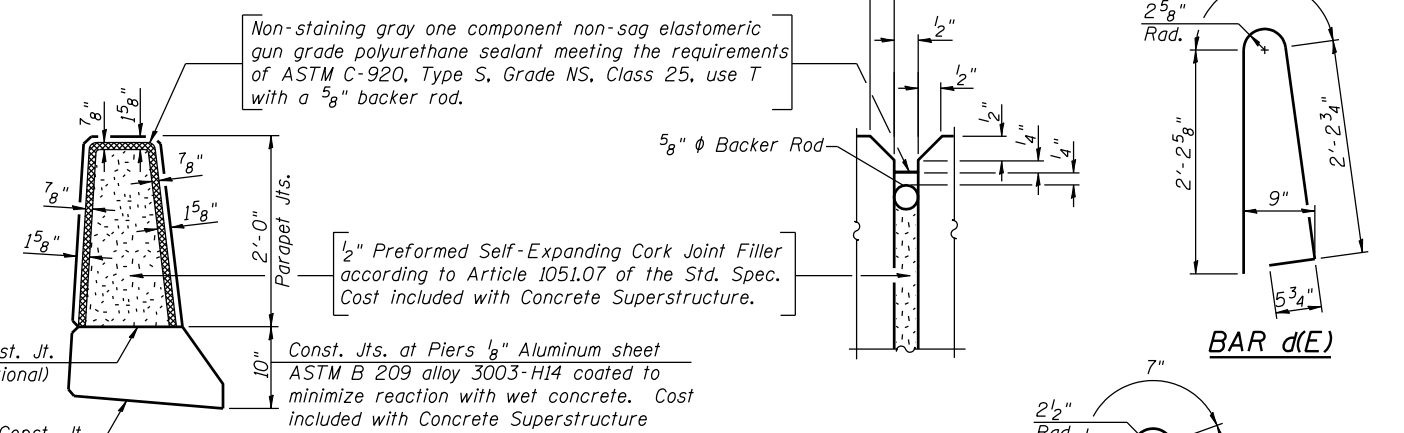


**INSIDE ELEVATION OF PARAPET**



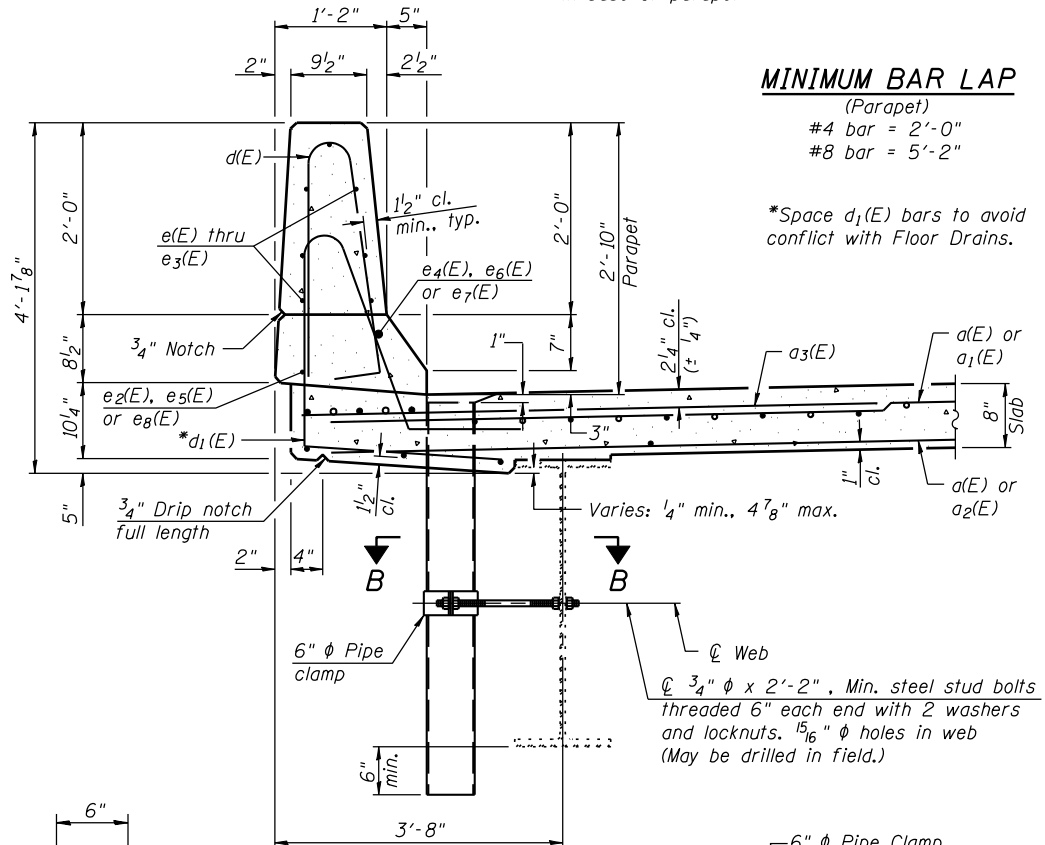
**PARAPET JOINT DETAILS**

Notes:  
 Drains shall be located clear of all diaphragms.  
 The exterior surfaces of the floor drains shall be painted with the finish coat as specified in Article 506 of the Standard Specifications. The exterior surfaces of the drains shall be cleaned according to the Society of Protective Coatings Spec. SSPC-SP1 prior to painting.  
 Fiberglass pipe shall conform to ASTM D 2996, with short-time rupture strength hoop tensile stress of 30,000 p.s.i. minimum.  
 Galvanize clamping device according to AASHTO M232. Cost of clamping device and inserts is included with Floor Drains.  
 See Sheets 16 and 17 of 27 for deep fillet reinforcement details.

**SUPERSTRUCTURE BILL OF MATERIAL**

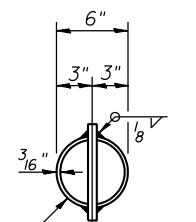
| Bar No.                          | Size     | Length     | Shape |
|----------------------------------|----------|------------|-------|
| a(E)                             | 962      | #5 33'-8"  | —     |
| a <sub>1</sub> (E)               | 116      | #5 33'-11" | —     |
| a <sub>2</sub> (E)               | 106      | #5 33'-7"  | —     |
| a <sub>3</sub> (E)               | 312      | #6 6'-6"   | —     |
| a <sub>4</sub> (E)               | 60       | #7 11'-2"  | —     |
| a <sub>5</sub> (E)               | 6        | #7 2'-9"   | —     |
| a <sub>6</sub> (E)               | 8        | #7 30'-9"  | —     |
| a <sub>7</sub> (E)               | 32       | #7 30'-9"  | —     |
| a <sub>8</sub> (E)               | 6        | #7 2'-5"   | —     |
| a <sub>9</sub> (E)               | 16       | #5 1'-6"   | —     |
| b(E)                             | 648      | #5 28'-3"  | —     |
| b <sub>1</sub> (E)               | 74       | #6 43'-7"  | —     |
| b <sub>2</sub> (E)               | 580      | #5 25'-9"  | —     |
| b <sub>3</sub> (E)               | 46       | #4 25'-3"  | —     |
| b <sub>4</sub> (E)               | 2        | #4 11'-0"  | —     |
| d(E)                             | 514      | #5 5'-7"   | —     |
| d <sub>1</sub> (E)               | 514      | #5 8'-4"   | —     |
| e(E)                             | 28       | #4 18'-2"  | —     |
| e <sub>1</sub> (E)               | 84       | #4 13'-8"  | —     |
| e <sub>2</sub> (E)               | 64       | #4 11'-2"  | —     |
| e <sub>3</sub> (E)               | 56       | #4 16'-6"  | —     |
| e <sub>4</sub> (E)               | 8        | #8 32'-8"  | —     |
| e <sub>5</sub> (E)               | 8        | #4 31'-1"  | —     |
| e <sub>6</sub> (E)               | 8        | #8 11'-2"  | —     |
| e <sub>7</sub> (E)               | 4        | #8 36'-2"  | —     |
| e <sub>8</sub> (E)               | 6        | #4 23'-9"  | —     |
| s <sub>4</sub> (E)               | 490      | #4 3'-4"   | —     |
| x(E)                             | 260      | #5 6'-8"   | —     |
| x <sub>1</sub> (E)               | 260      | #5 4'-1"   | —     |
| Reinforcement Bars, Epoxy Coated | Pound    | 104,180    |       |
| Concrete Superstructure          | Cu. Yds. | 508        |       |

Bars indicated thus 1 x 3-#8 etc. indicates 1 line of bars with 3 lengths per line.

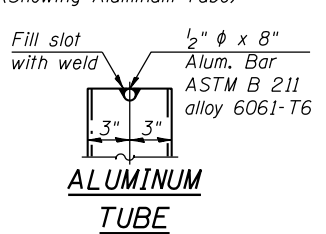


**SECTION THRU PARAPET**

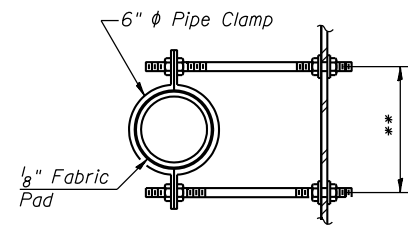
Note:  
 Floor drain shown. See Sheets 3 and 15 of 27 for drainage scupper details.



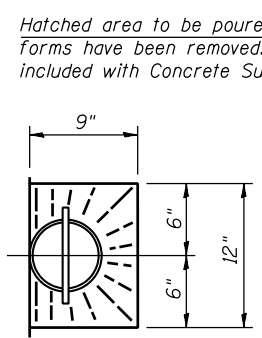
**ALUMINUM TUBE**  
 6" O.D. Aluminum Tube alloy 6061-T6 or 6" Fiberglass Pipe



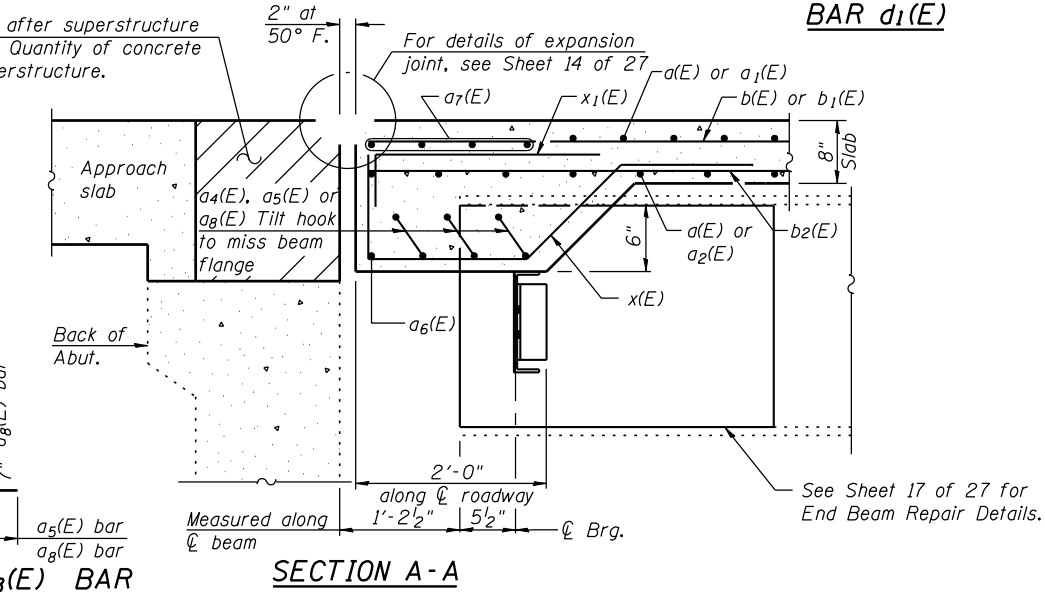
**FIBERGLASS PIPE**  
 1/2" φ x 8" Fiberglass Reinf. Plastic Rebar



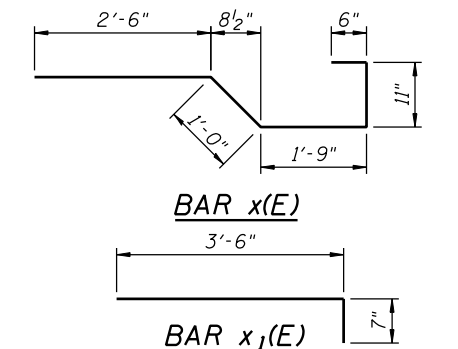
**SECTION B-B**  
 \*\*Dimension as required by Pipe Clamp



**TOP PLAN**



**SECTION A-A**



FILE NAME = s:\p1\6380--6398\6346\025\micro\cadd sheets\structural\plans\089-0007-64E76-011-SUPDET.dgn