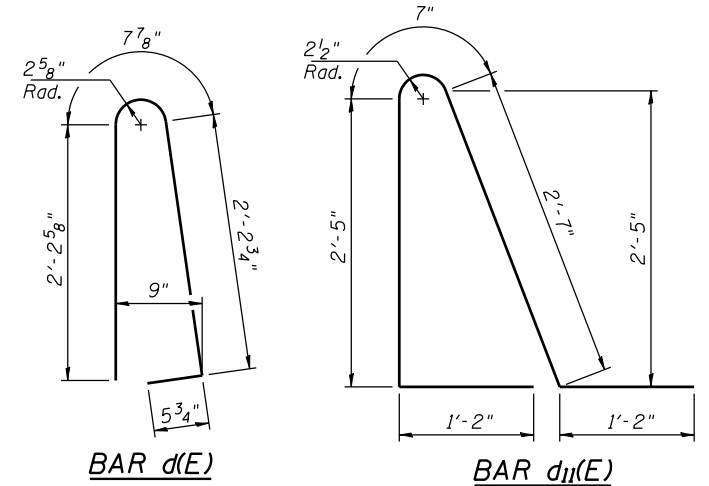


Notes:  
 See Sheet 12 of 27 for Detail A and View B-B.  
 Approach slab and parapet concrete shall be paid for as Concrete Superstructure.  
 Approach footing concrete shall be paid for as Concrete Structures.  
 Reinforcement shall be paid for as Reinforcement Bars, Epoxy Coated.  
 For v(E) bar details, see Sheet 22 of 27.  
 The approach footing maximum applied service bearing pressure (Q<sub>max</sub>) = 2.0 ksf.  
 For bar splicer details, see Sheet 23 of 27.  
 Cost of excavation for approach footing included with Concrete Structures.  
 For Porous Granular Embankment (Special) and drainage treatment details, see Sheet 3 of 27.  
 For additional parapet details, see Sheet 11 of 27.

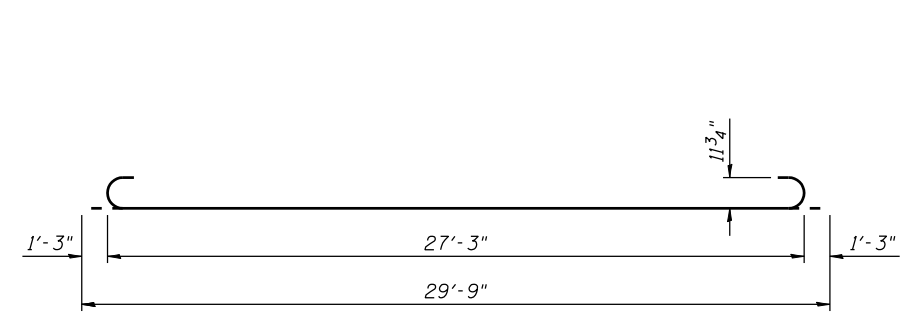
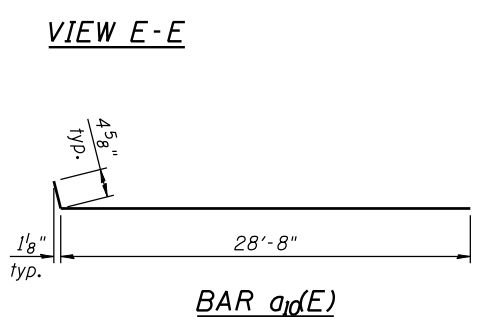
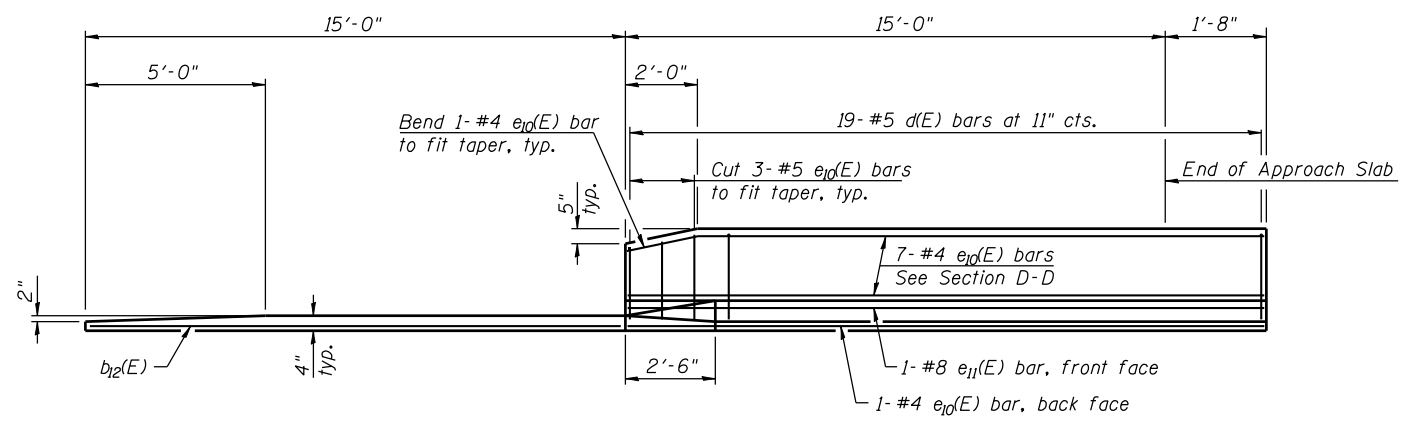
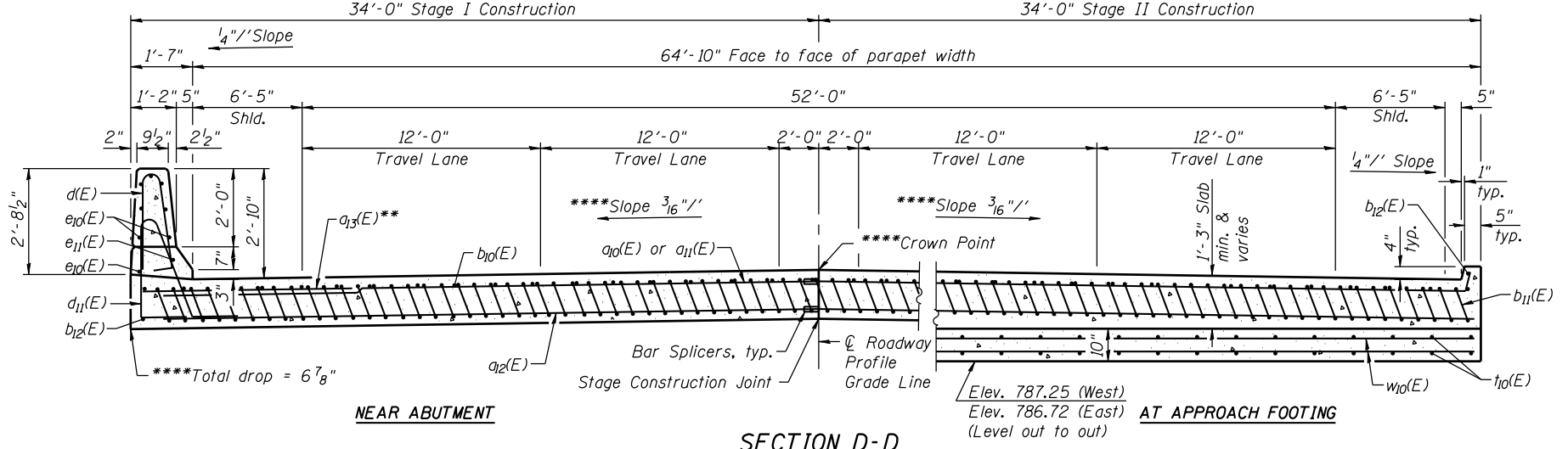
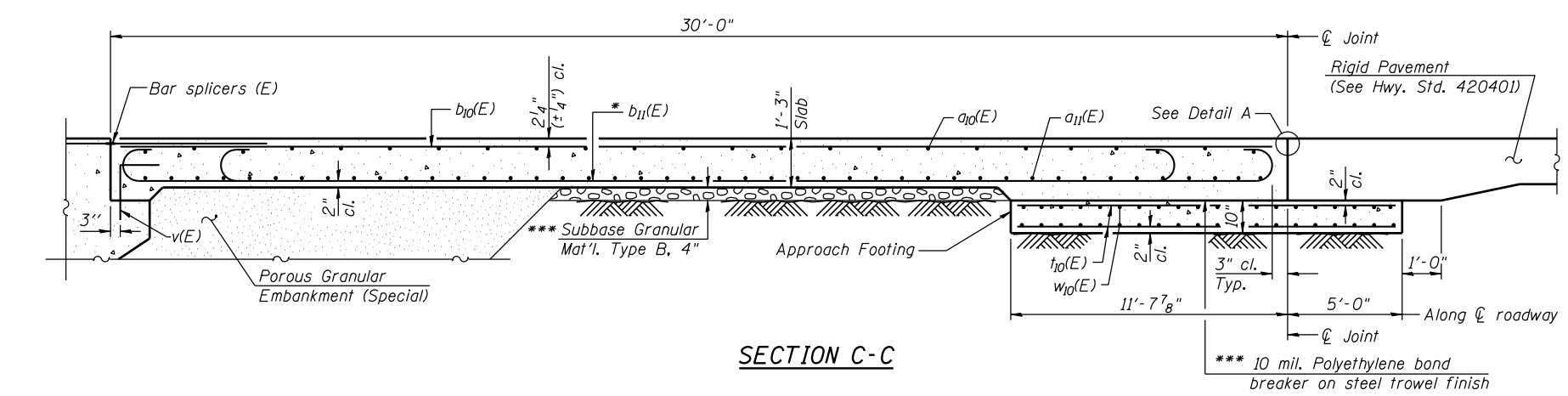


\* Tilt #9 b<sub>11</sub>(E) bars as required to maintain clearance.  
 \*\* Alternate with a<sub>0</sub>(E) bars.  
 \*\*\* Cost included with Concrete Superstructure.  
 \*\*\*\* West Approach Slab slope as shown. East varies to accommodate superelevation transition.

**TWO APPROACHES  
 BILL OF MATERIAL**

Bar	No.	Size	Length	Shape
a <sub>0</sub> (E)	100	#4	29'-1"	┌───┐
a <sub>11</sub> (E)	100	#4	28'-8"	┌───┐
a <sub>2</sub> (E)	368	#5	28'-10"	┌───┐
a <sub>3</sub> (E)	48	#6	10'-10"	┌───┐
b <sub>0</sub> (E)	108	#4	29'-8"	┌───┐
b <sub>11</sub> (E)	322	#9	29'-9"	┌───┐
b <sub>2</sub> (E)	8	#4	14'-8"	┌───┐
d(E)	76	#5	5'-7"	┌───┐
d <sub>11</sub> (E)	68	#5	7'-11"	┌───┐
e <sub>0</sub> (E)	32	#4	16'-4"	┌───┐
e <sub>11</sub> (E)	4	#8	16'-4"	┌───┐
t <sub>10</sub> (E)	272	#4	16'-3"	┌───┐
w <sub>10</sub> (E)	320	#5	28'-10"	┌───┐
Concrete Superstructure			Cu. Yd.	207
Concrete Structures			Cu. Yd.	70
Reinforcement Bars, Epoxy Coated			Pound	52,020
Reinforcement Bars, Epoxy Coated			Pound	12,580

■ Included in Superstructure Quantity on Sheet 2 of 27  
 ■ Included in Substructure Quantity on Sheet 2 of 27



FILE NAME = s:\p\16380--6395\6346\025\micro\cadd sheets\structural\plans\0890007-64E76-012-BAP.dgn