

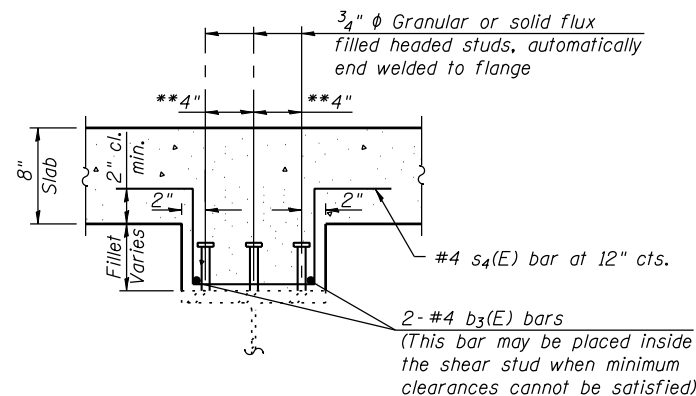
- (A) 48 Spaces at 1'-0" = 48'-0"
- (B) 26 Spaces at 1'-3" = 32'-6"
- (C) 36 Spaces at 1'-3" = 45'-0"

EXISTING BEAM ELEVATION

*See Deep Fillet Reinforcement Table on Sheet 17 of 27 for (D), (E), (F) and deep fillet reinforcement b3(E) and s4(E) bar locations

STANDARD INTERIOR FILLET SECTION

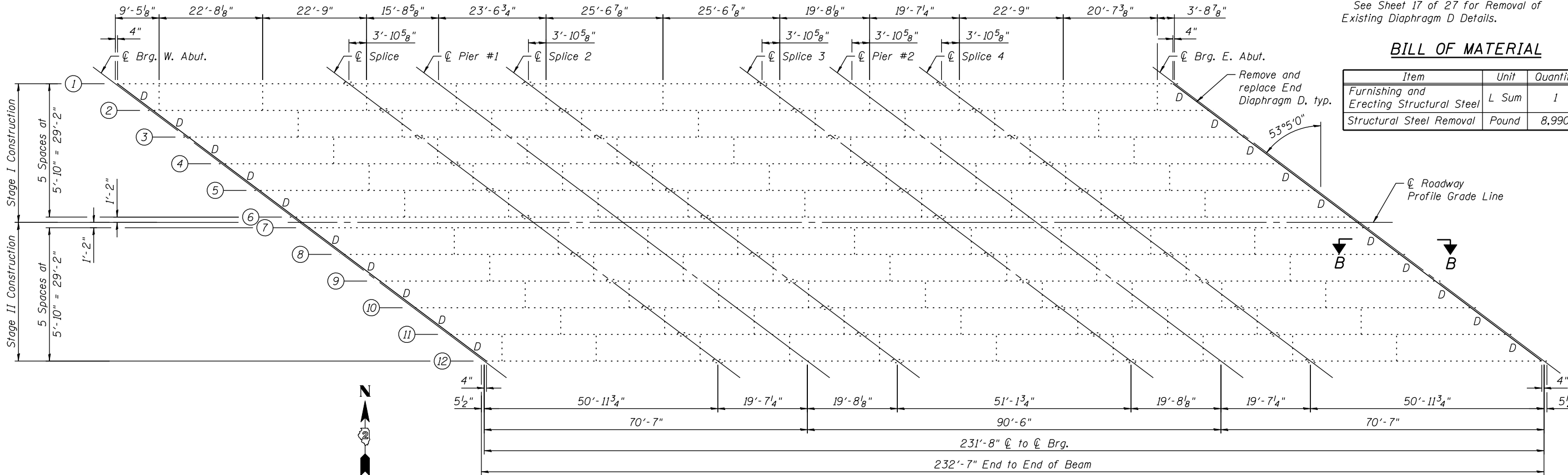
See Existing Beam Elevation for locations



Note:

See Sheet 11 of 27 for s4(E) and b3(E) bar details and Bill of Material

** Vary spacing (3" min. to 4 1/2" max.) on the Cover Plate Taper to allowed the Stud Shear Connector to maintain a 1" distance to the edge of the Cover Plate or beam to the face of the Stud Shear Connector per Article 505.08 of the Standard Specifications.

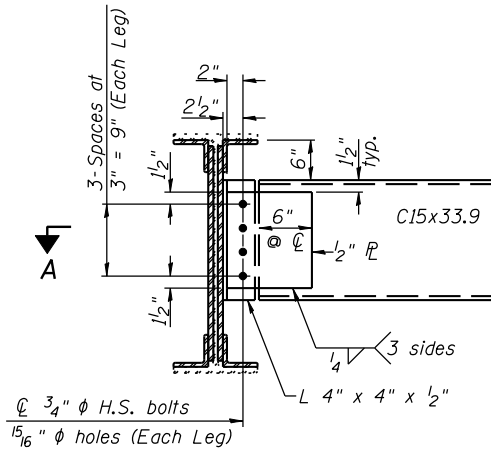
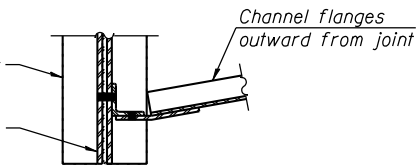


EXISTING FRAMING PLAN

SECTION A-A

End beam flange repair, typ. See Sheet 17 of 27 for details

End beam web repair, typ. See Sheet 17 of 27 for details



PROPOSED DIAPHRAGM D
20 Required

Note:

Two hardened washers required for each set of oversized holes.
See Sheet 17 of 27 for Section B-B and Beam End Repair Details.
See Sheet 17 of 27 for Removal of Existing Diaphragm D Details.

BILL OF MATERIAL

| Item | Unit | Quantity |
|--|-------|----------|
| Furnishing and Erecting Structural Steel | L Sum | 1 |
| Structural Steel Removal | Pound | 8,990 |

FILE NAME = s:\p1\6380--6395\6346\025\micro\cadd sheets\structural\plans\089-0007-64E76-015-STEEL.dgn

SA STRAND ASSOCIATES
1170 SOUTH HOUBOLT ROAD
JOLIET, ILLINOIS 60431
(815) 744-4200
IDFPR NO. 184-00123

| | | |
|----------------------|--------------|-----------|
| USER NAME = brianf | DESIGNED KDH | REVISED - |
| PLOT SCALE = | CHECKED AJS | REVISED - |
| PLOT DATE = 8/6/2012 | DRAWN BJF | REVISED - |
| | CHECKED RRD | REVISED - |

| | | | | | | |
|------------------------------|------------------------|---------------------------|-------------------|--------------------|-----------------|--------------|
| STATE OF ILLINOIS | STEEL DETAILS (1 OF 2) | F.A.P. RTE. 5 | SECTION (19VB-1D) | COUNTY STEPHENSON | TOTAL SHEETS 73 | SHEET NO. 47 |
| DEPARTMENT OF TRANSPORTATION | STRUCTURE NO. 089-0007 | ILLINOIS FED. AID PROJECT | | CONTRACT NO. 64E76 | | |

STATE OF ILLINOIS
DEPARTMENT OF TRANSPORTATION

STEEL DETAILS (1 OF 2)
STRUCTURE NO. 089-0007
SHEET NO. 16 OF 27 SHEETS

| | | | | |
|---------------------------|-------------------|--------------------|-----------------|--------------|
| F.A.P. RTE. 5 | SECTION (19VB-1D) | COUNTY STEPHENSON | TOTAL SHEETS 73 | SHEET NO. 47 |
| ILLINOIS FED. AID PROJECT | | CONTRACT NO. 64E76 | | |