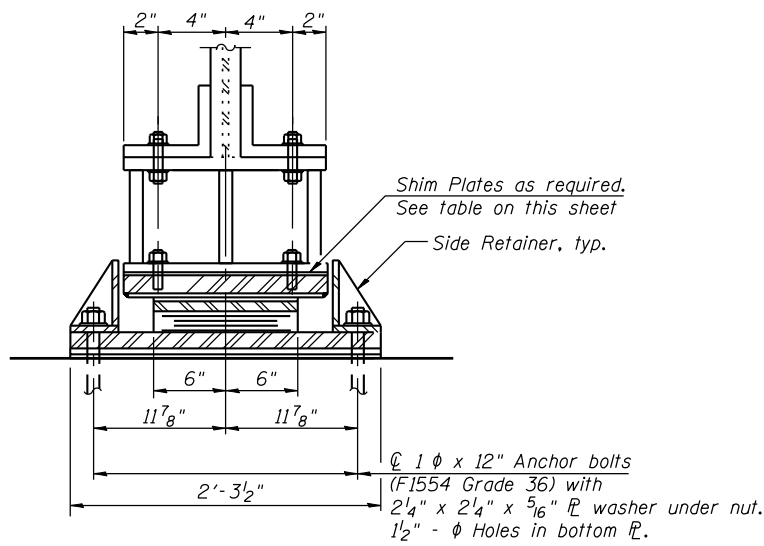
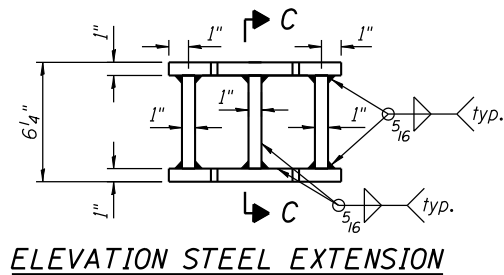


ELEVATION AT WEST ABUTMENT

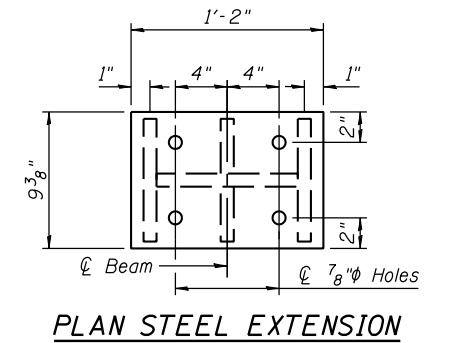
WEST ABUTMENT TYPE II ELASTOMERIC EXP. BEARING



SECTION A-A

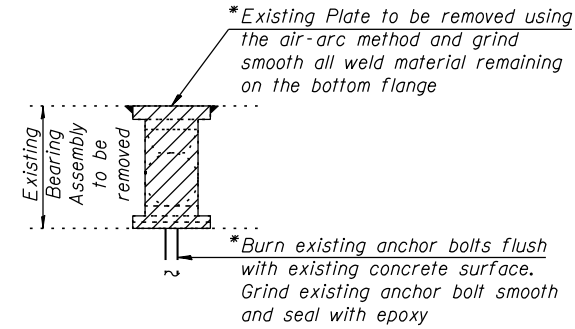


SECTION C-C



WEST ABUTMENT STEEL EXTENSION

Note:
 Steel Extensions are to be paid for as Furnishing and Erecting Structural Steel.
 Prior to ordering any steel extension material, the Contractor shall verify in the field all bearing height and steel extension dimensions.

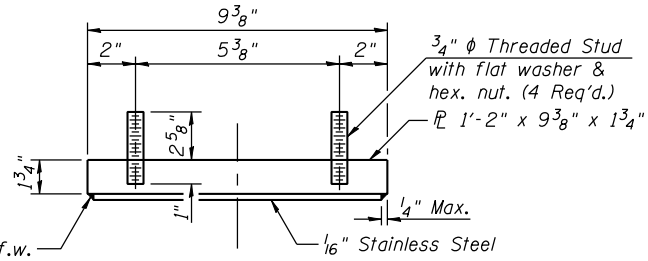


REMOVE EXISTING BEARING AT WEST ABUTMENT

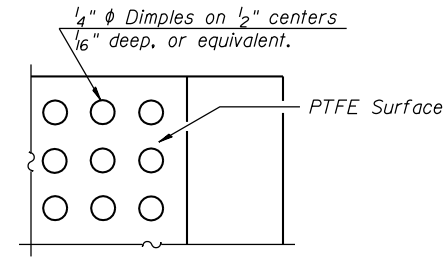
*Cost is included in "Jack and Remove Existing Bearings"

Notes:
 Anchor bolts shall be ASTM F1554 all-thread (or an Engineer-approved alternate material) of the grade(s) and diameter(s) specified. The corresponding specified grade of AASHTO M314 anchor bolts may be used in lieu of ASTM F1554.
 Anchor bolts at fixed bearings may be either cast in place or installed in holes drilled after the supported member is in place.
 Anchor bolts for side retainers may be cast in place or installed in holes drilled before or after members are in place.
 Drilled and set anchor bolts shall be installed according to Article 521.06 of the Standard Specifications.
 Side retainers and other steel members required for the elastomeric bearing assembly shall be included in the cost of Elastomeric Bearing Assembly, Type I.
 Two 1/8 in. adjusting shims shall be provided for each bearing in addition to all other plates or shims and placed as shown on bearing details.
 See Sheet 19 of 27 for West Abutment Bearing Details. See Sheet 17 of 27 for Interior Girder Reaction Tables. Jack and Removal of existing Bearing Procedure:

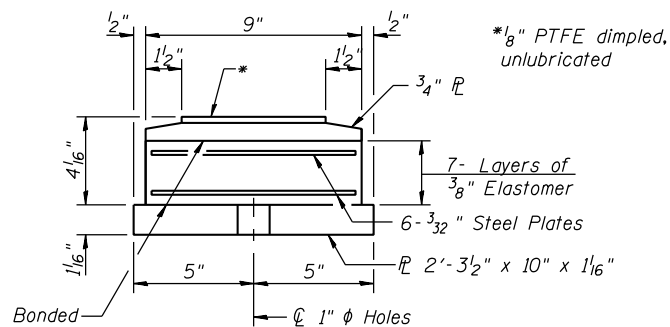
- A. Jacking and removing existing bearings shall be done after existing deck removal is complete.
- B. The Contractor shall submit, for approval by the Engineer, plans for jacking existing girders and installing new bearings prior to commencing any related work. This work shall be done after existing concrete deck is removed and prior to pouring of the new deck. The maximum dead load reaction per beam (weight of steel only) per bearing at West Abutment is 6.8 kips. Minimum jack capacity is 14 kips at West Abutment.
- C. The new bearings and steel extensions shall be in place and the jacks shall be lowered before the new concrete deck is poured.
- D. See Special Provision.



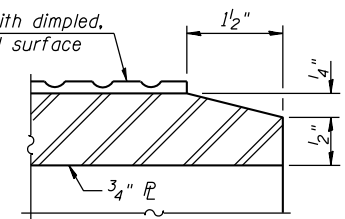
WEST ABUTMENT TOP BEARING ASSEMBLY



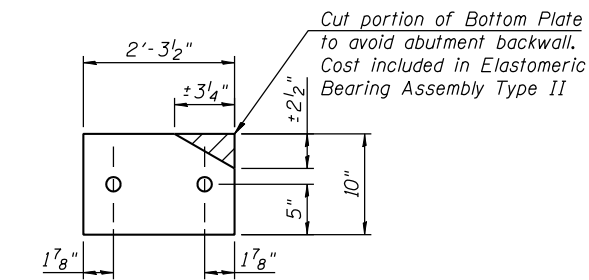
PLAN-PTFE SURFACE



WEST ABUTMENT BOTTOM BEARING ASSEMBLY



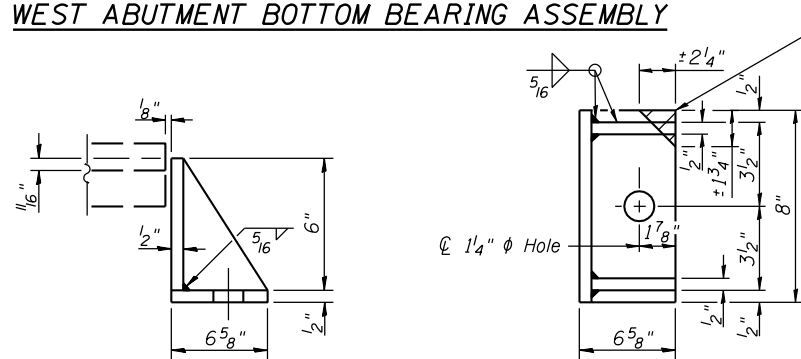
SECTION THRU PTFE



PLAN-BOTTOM PLATE

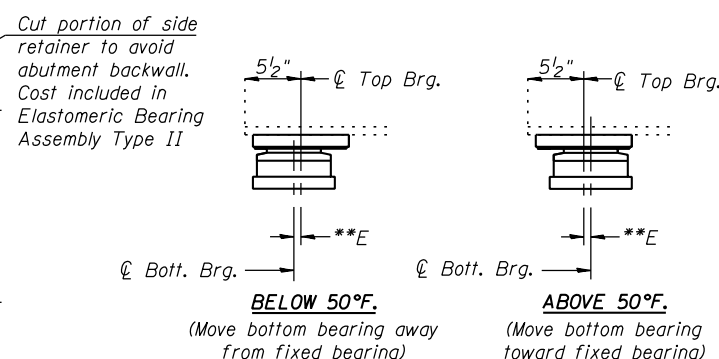
WEST ABUTMENT SHIM PLATE DETAILS

Beam No.	Shim Plate Height
1	1"
2	1"
3	1 1/4"
4	5/8"
5	5/8"
6	7/8"
7	1"
8	1 5/8"
9	1"
11	1"
12	3/4"



SIDE RETAINER

Equivalent rolled angle with stiffeners will be allowed in lieu of welded plates.



SETTING ANCHOR BOLTS AT WEST ABUTMENT EXP. BEARING

**E = 1/8" per each 100' of expansion for every 15° temp. change from the normal temp. of 50°F.

BILL OF MATERIAL

Item	Unit	Total
Elastomeric Bearing Assembly Type II	Each	12
Anchor Bolts, 1"	Each	24
Jack and Remove Existing Bearings	Each	12

FILE NAME = s:\p1\6380--6395\6346\025\micro\cadd sheets\structural\plans\089\0807-64E76-01B-BE-AR.dgn