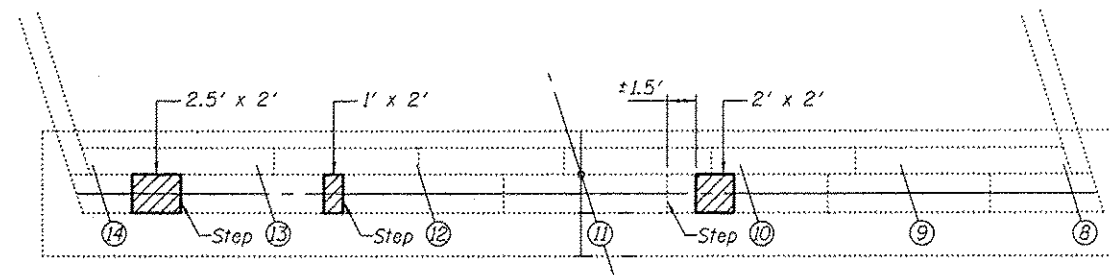
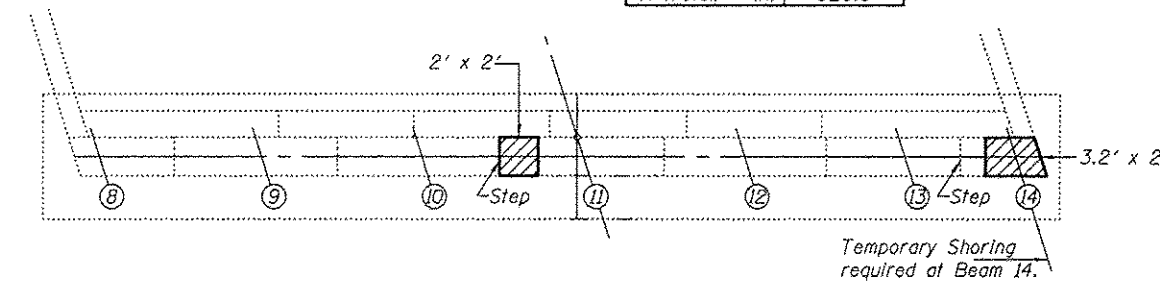


BEAM REACTIONS

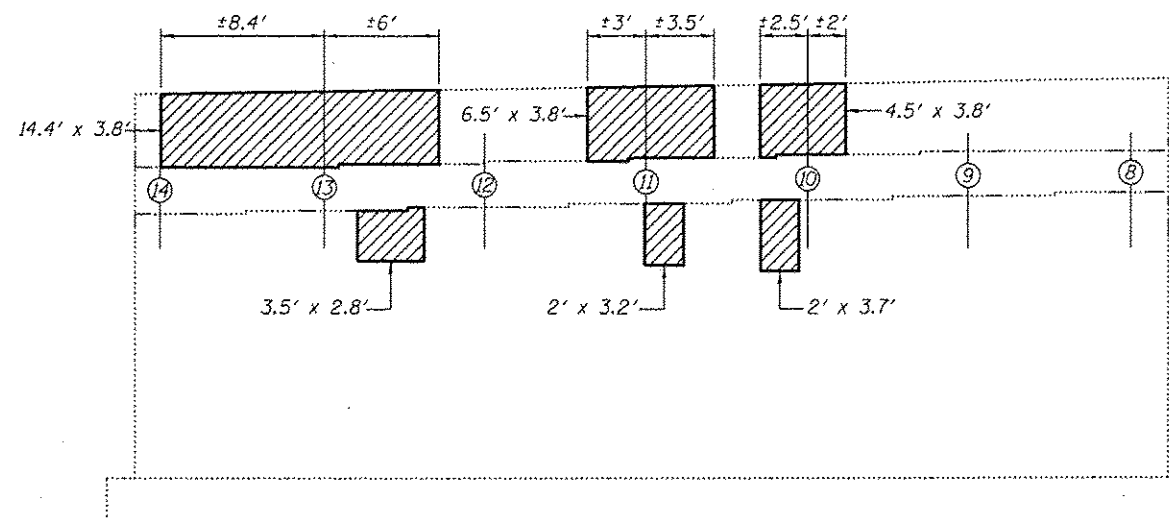
R ₂	(K)	216.5
R ₄	(K)	85.6
Imp.	(K)	18.5
R (Total)	(K)	320.6



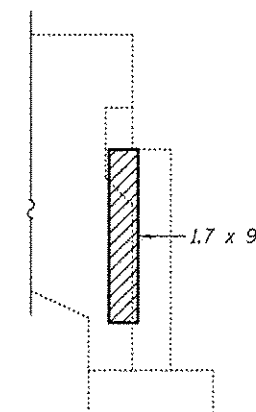
S. ABUT. PLAN (SN: 071-0063 N.B.)



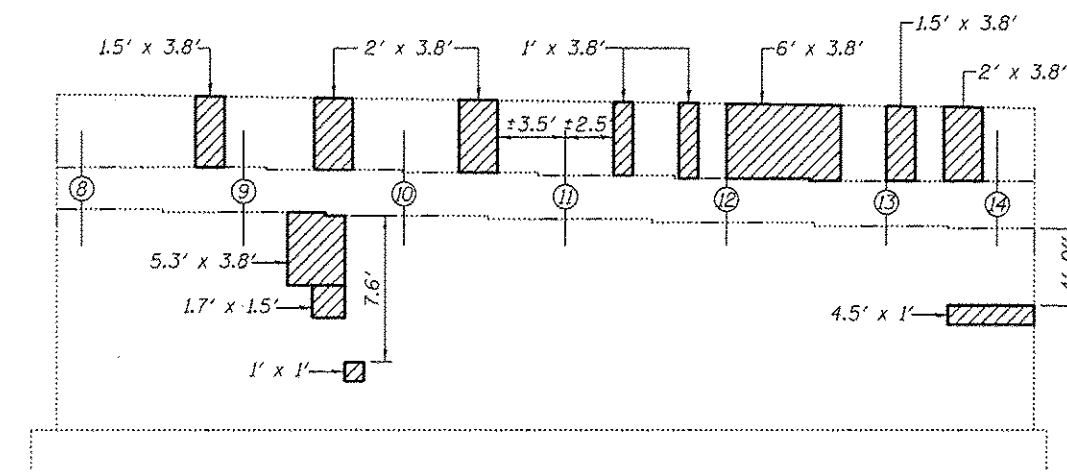
N. ABUT. PLAN (SN: 071-0063 N.B.)



SOUTH ABUTMENT (SN: 071-0063 N.B.)
(Looking South)



NORTH ABUTMENT WEST CURTAIN WALL (SN: 071-0063 N.B.)



NORTH ABUTMENT (SN: 071-0063 N.B.)
(Looking North)

Note:
If the analysis submitted to the Contractor for the jacking/temporary support system to be used shows temporary stiffeners are required to prevent web crippling or buckling, the stiffeners shall be steel and bolted to the web. If stiffeners are not required, hardwood timbers shall be installed tightly between the top and bottom flange to prevent flange rotation.

BILL OF MATERIAL

ITEM	UNIT	QUANTITY
Structural Repair of Concrete (Depth ≤ 5 inches)	Sq. Ft.	250
Temporary Shoring & Cribbing	Each	1

DESIGNED - GGE	EXAMINED - <i>Timothy A. [Signature]</i>	DATE - SEPTEMBER 19, 2012
CHECKED - ADY	ACTING ENGINEER OF STRUCTURAL SERVICES	
DRAWN - Kyle M. Steffen	PASSED - <i>Carl [Signature]</i>	
CHECKED - GGE ADY	ACTING ENGINEER OF BRIDGES AND STRUCTURES	

STATE OF ILLINOIS DEPARTMENT OF TRANSPORTATION

STRUCTURAL REPAIR OF CONCRETE AT ABUTMENTS SN 071-0063 (N.B.)

F.A.I. RTE.	SECTION	COUNTY	TOTAL SHEETS	SHEET NO.
39	D2 DECK REPAIR 2013-1	OGLE	32	26
CONTRACT NO. 64H73			ILLINOIS FED. AID PROJECT	