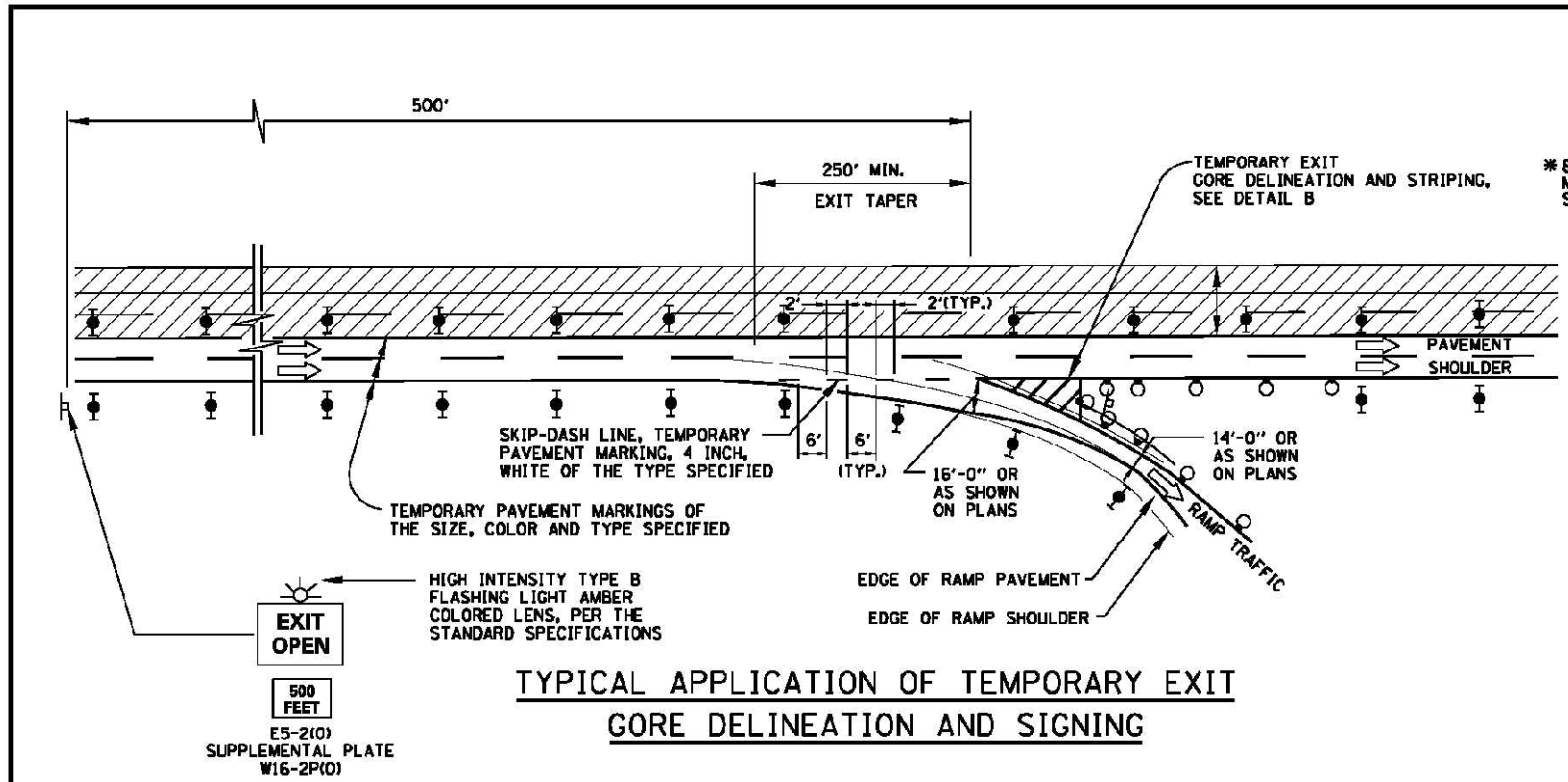
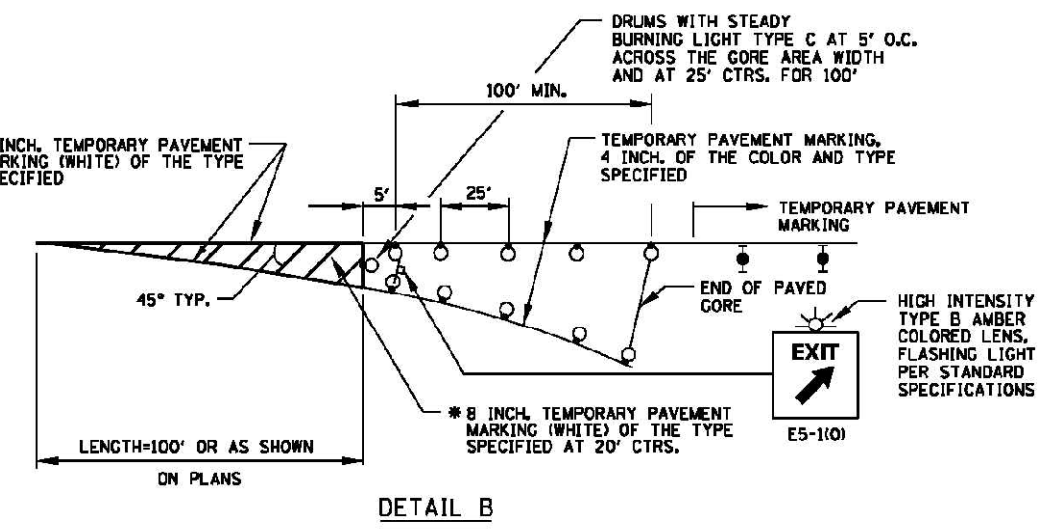


DATE	
BY	
FINAL SURVEY	
SURVEYED	
PLOTTED	
TEMPLATE	
NOTE BOOK	
NO.	
AREAS CHECKED	

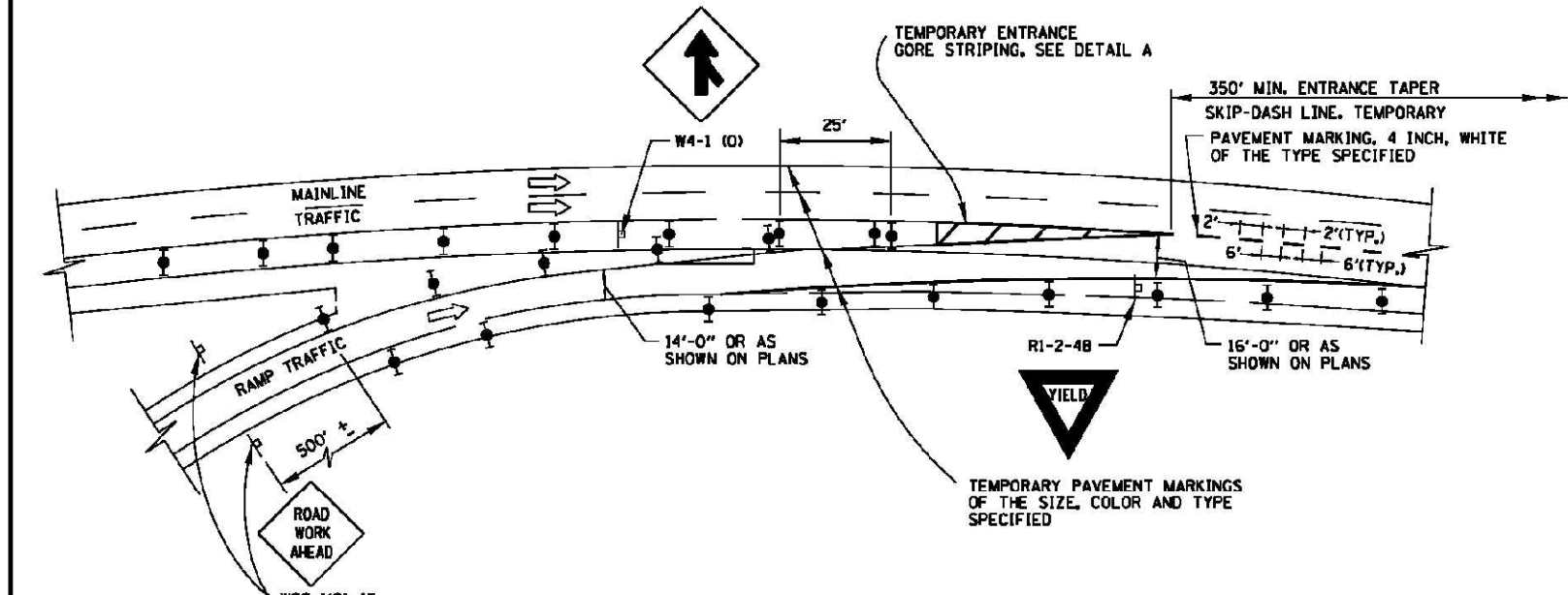
DATE	
BY	
ORIGINAL SURVEY	
SURVEYED	
PLOTTED	
TEMPLATE	
NOTE BOOK	
NO.	
AREAS CHECKED	



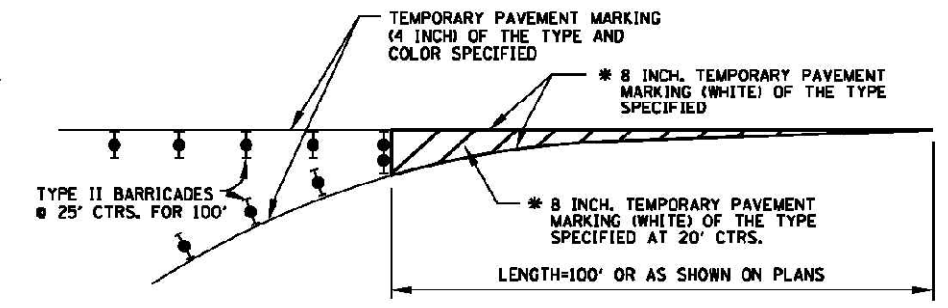
**TYPICAL APPLICATION OF TEMPORARY EXIT GORE DELINEATION AND SIGNING**



**TEMPORARY EXIT GORE DELINEATION AND SIGNING**



**TYPICAL APPLICATION OF TEMPORARY ENTRANCE GORE DELINEATION AND SIGNING**



**TEMPORARY ENTRANCE GORE STRIPING**

**SYMBOLS**

- WORK AREA
- SIGN
- TYPE II BARRICADE, DRUM, OR VERTICAL BARRICADE WITH STEADY BURN MONODIRECTIONAL LIGHT
- DRUM WITH STEADY BURNING LIGHT

\* 8 INCH TEMPORARY PAVEMENT MARKING IS TO BE MADE OF 2-TEMPORARY PAVEMENT MARKING 4 INCH, WHITE OF THE TYPE SPECIFIED.

APPROVED: *Paul Kovacs* CHIEF ENGINEER DATE 5-1-2009...

DATE	REVISIONS
1-1-2011	CHANGED SYMBOL DESIGNATION
2-7-2012	REVISED MERGE SIGN

**Illinois Tollway**  
Open Roads for a Faster Future

TEMPORARY GORE DETAILS

STANDARD E5-02