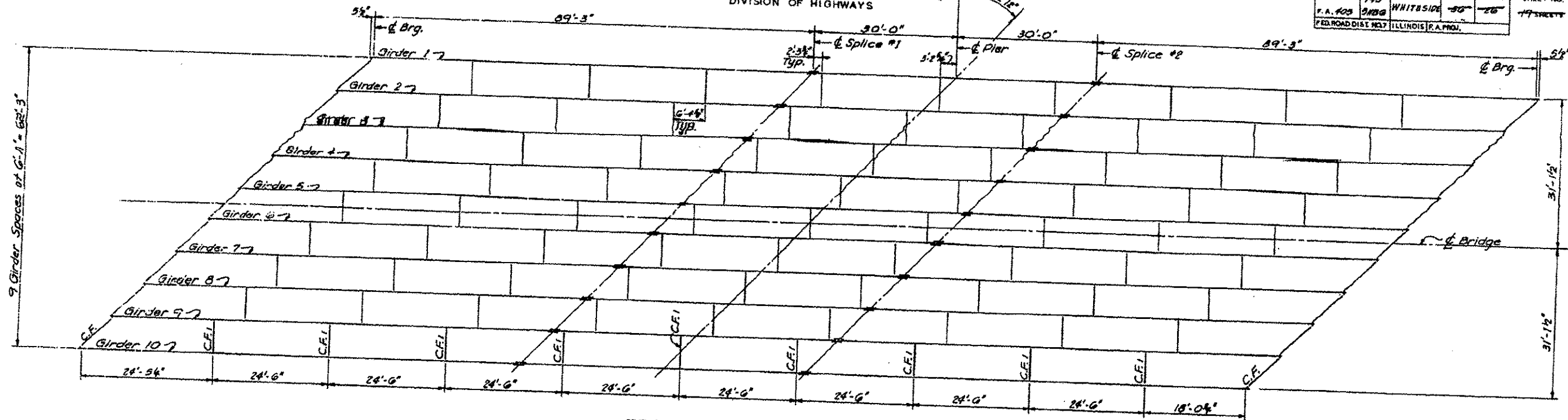


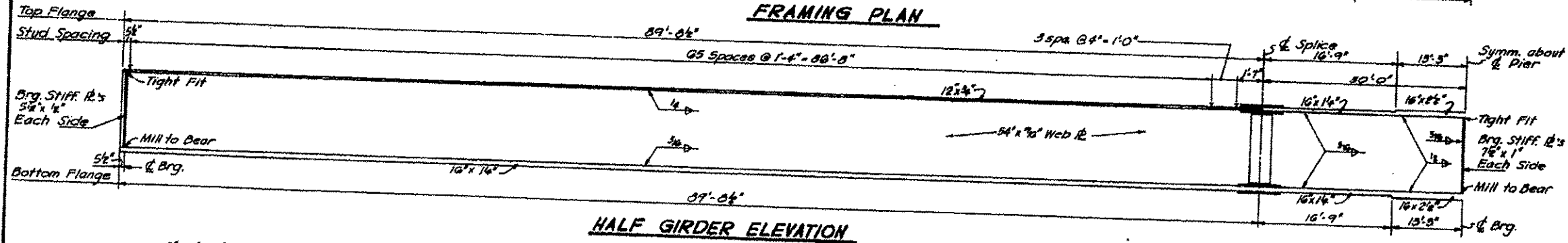
FOR INFORMATION ONLY

STATE OF ILLINOIS
DEPARTMENT OF PUBLIC WORKS & BUILDINGS
DIVISION OF HIGHWAYS

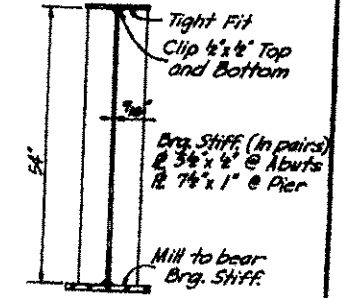
ROUTE NO.	SEC.	COUNTY	TOTAL SHEETS	SHEET NO.	SHEET NO. 11 OF 19
F.A. 403	3NB-6	WHITESIDE	30	26	19 SHEETS
FED. ROAD DIST. NO. 7 ILLINOIS P.A. PROJ.					



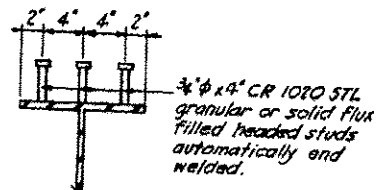
FRAMING PLAN



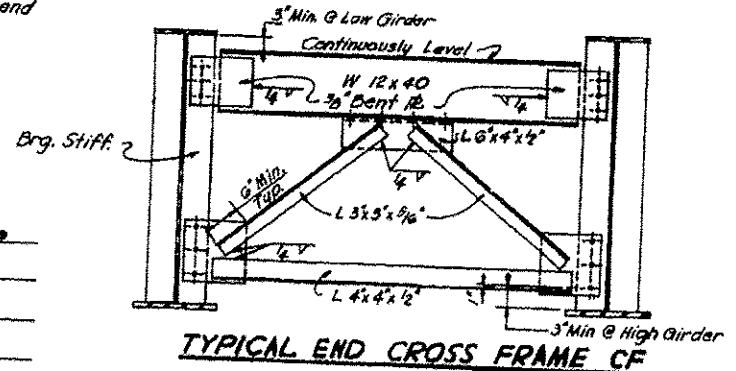
HALF GIRDER ELEVATION



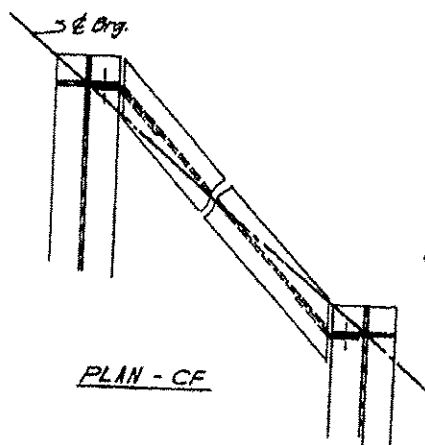
TYPICAL SECTION



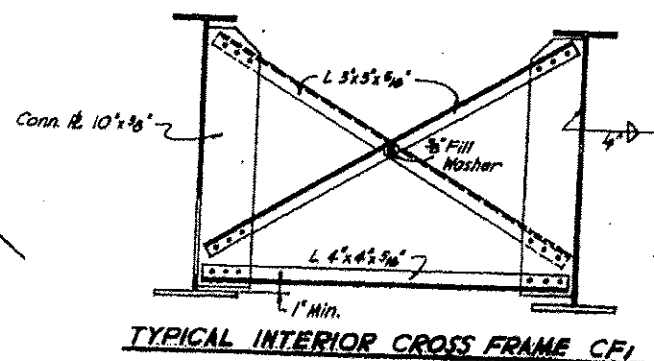
SHEAR CONNECTORS DETAIL
(4/4 Studs per girder.)



TYPICAL END CROSS FRAME CF



PLAN - CF



TYPICAL INTERIOR CROSS FRAME CFI

DESIGNED G. Cummins	EXAMINED
CHECKED S. McKnight	PASSED
DRAWN L. Roberts	APPROVED
CHECKED S. McKnight	

STRUCTURAL STEEL
F.A. RTE. 403 - SEC. 195-3NB-6
WHITESIDE COUNTY
STA. 2619 + 89.27