

11-9-12 LETTING ITEM 021

STATE OF ILLINOIS
DEPARTMENT OF TRANSPORTATION
DIVISION OF HIGHWAYS

**PROPOSED
HIGHWAY PLANS**

VARIOUS ROUTES
SECTION D3 BRIDGE DECK SEALING 2013

BRIDGE DECK SEALING
VARIOUS COUNTIES

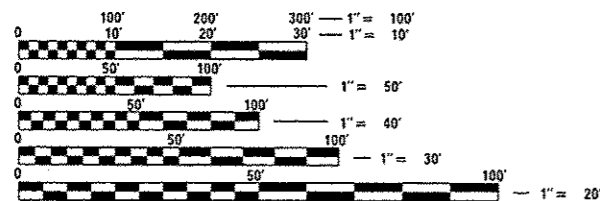
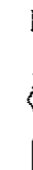
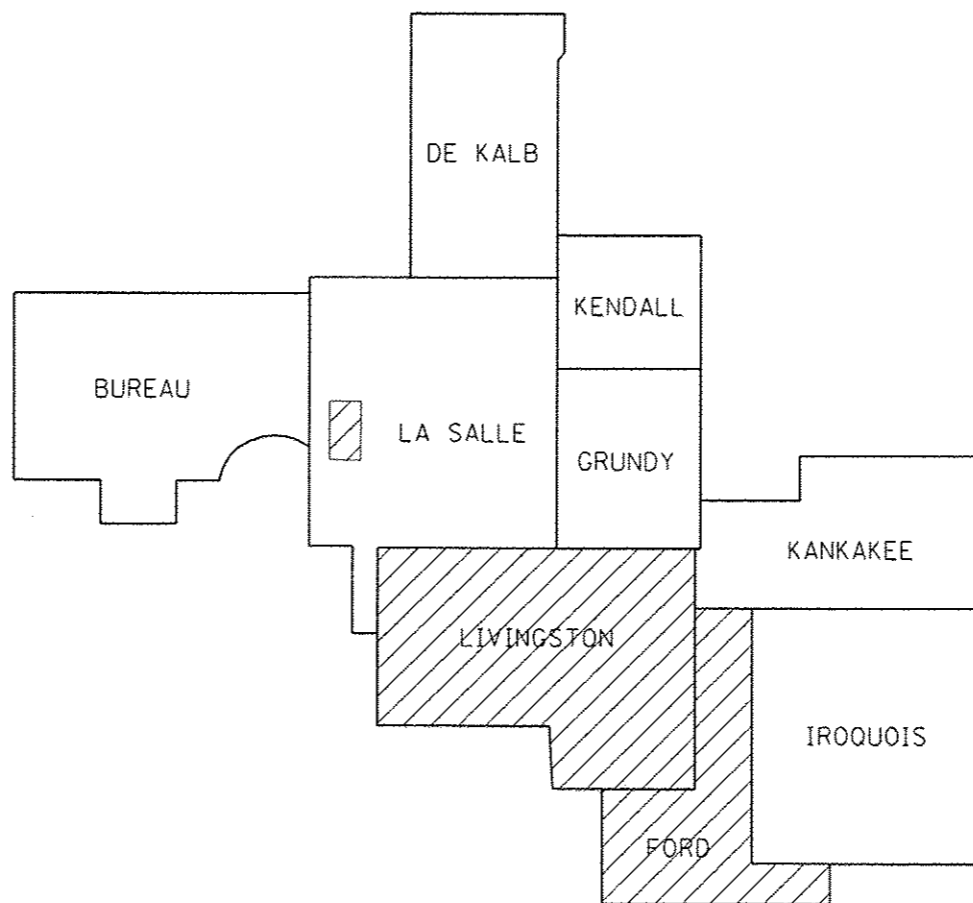
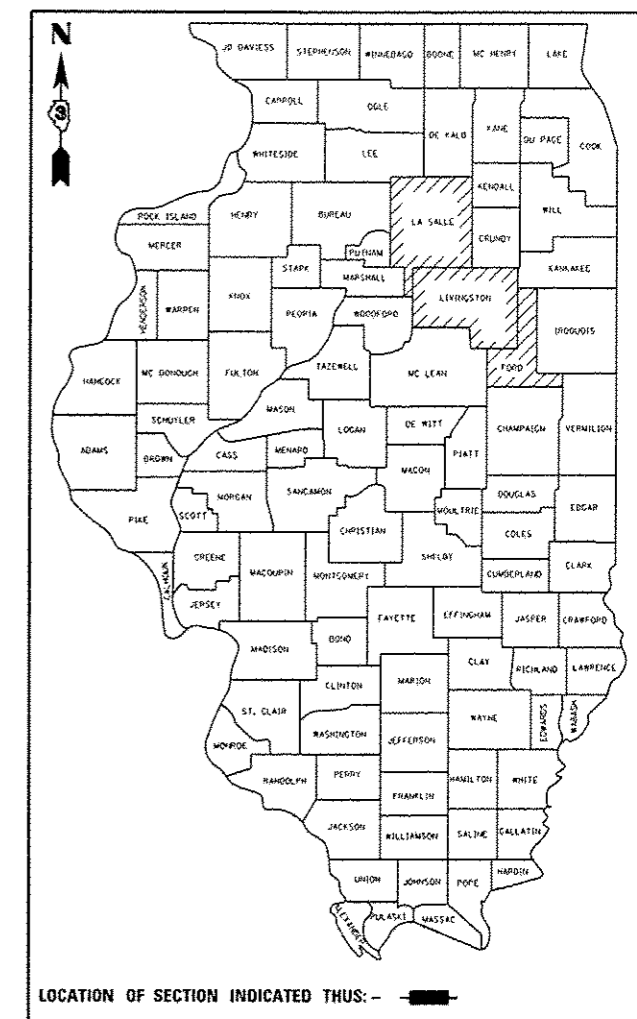
C-93-057-12

FOR INDEX OF SHEETS, SEE SHEET NO. 2

F.A. RTE.	SECTION	COUNTY	TOTAL SHEETS	SHEET NO.
VAR	.	VARIOUS	9	1
		ILLINOIS	CONTRACT NO. 66B87	

*03 BRIDGE DECK SEALING 2013

D-93-030-12



FULL SIZE PLANS HAVE BEEN PREPARED USING STANDARD ENGINEERING SCALES. REDUCED SIZED PLANS WILL NOT CONFORM TO STANDARD SCALES. IN MAKING MEASUREMENTS ON REDUCED PLANS, THE ABOVE SCALES MAY BE USED.

J.U.L.I.E.
JOINT UTILITY LOCATION INFORMATION FOR EXCAVATION
1-800-892-0123
OR 811

PROJECT ENGINEER: CRAIG REED, P.E. 815-434-8420
UNIT CHIEF: BRAD DUNCAN, P.E. 815-434-8562

CONTRACT NO. 66B87

STATE OF ILLINOIS
DEPARTMENT OF TRANSPORTATION
DIVISION OF HIGHWAYS

SUBMITTED August 20 20 12
Eric S. Therkildsen
DEPUTY DIRECTOR OF HIGHWAYS, REGION ENGINEER

October 5 20 12
John P. Baranzelli, P.E.
ENGINEER OF DESIGN AND ENVIRONMENT

October 5 20 12
William R. Frey, Jr.
DIRECTOR OF HIGHWAYS, CHIEF ENGINEER

PRINTED BY THE AUTHORITY
OF THE STATE OF ILLINOIS

INDEX OF SHEETS

- 1 COVER SHEET
- 2 INDEX OF SHEETS, STANDARDS, AND GENERAL NOTES
- 3 SUMMARY OF QUANTITIES
- 4-5 BRIDGE SEALING SCHEDULE
- 6-8 LOCATION MAPS
- 9 SEALING DETAILS

STANDARDS

- 000001-06 STANDARD SYMBOLS, ABBREVIATIONS AND PATTERNS
- 701201-04 LANE CLOSURE, 2L, 2W, DAY ONLY, FOR SPEEDS \geq 45 MPH
- 701400-05 APPROACH TO LANE CLOSURE, FREEWAY/EXPRESSWAY
- 701406-06 LANE CLOSURE, FREEWAY/EXPRESSWAY, DAY OPERATIONS ONLY
- 701411-08 LANE CLOSURE, MULTILANE, AT ENTRANCE OR EXIT RAMP FOR SPEEDS \geq 45 MPH
- 701501-06 URBAN LANE CLOSURE, 2L, 2W, UNDIVIDED
- 701601-07 URBAN LANE CLOSURE, MULTILANE, 1W OR 2W WITH NONTRAVERSABLE MEDIAN
- 701606-08 URBAN LANE CLOSURE, MULTILANE, 2W WITH MOUNTABLE MEDIAN
- 701901-02 TRAFFIC CONTROL DEVICES

GENERAL NOTES

ANY REFERENCE TO A STANDARD IN THESE PLANS SHALL BE INTERPRETED TO MEAN THE EDITION AS INDICATED BY THE SUBNUMBER SHOWN IN THE LIST OF STANDARDS OR THE COPY INCLUDED IN THESE PLANS.

THE ENGINEER WILL BE THE SOLE JUDGE CONCERNING CURING TIME FOR THE SEALER.

STATE OF ILLINOIS
DEPARTMENT OF TRANSPORTATION
DISTRICT THREE

PREPARED BY: Tom Baniel
DISTRICT STUDIES & PLANS ENGINEER

DATE: 8-20-12

EXAMINED BY: Wade L. Phillips
DISTRICT CONSTRUCTION ENGINEER

Wade L. Phillips
DISTRICT MATERIALS ENGINEER

Samuel H. Hester
DISTRICT OPERATIONS ENGINEER

FILE NAME =	USER NAME = duncanbd	DESIGNED -	REVISED -	STATE OF ILLINOIS DEPARTMENT OF TRANSPORTATION	INDEX OF SHEETS, STANDARDS, AND GENERAL NOTES	F.A. RTE.	SECTION	COUNTY	TOTAL SHEETS	SHEET NO.	
ci:\pw-work\p\rida\duncanbd\0208542\0366887-shs-details.dgn		DRAWN -	REVISED -			VAR		VARIOUS	9	2	
PLOT SCALE = 100.0000 / in.		CHECKED -	REVISED -			+03 BRIDGE DECK SEALING 2013 CONTRACT NO. 66887					
PLOT DATE = 8/15/2012		DATE -	REVISED -			ILLINOIS FED. AID PROJECT					
					SCALE:	SHEET NO. OF SHEETS STA. TO STA.					

CODE NO.	ITEM	UNIT	CONSTR. CODE
			100 % STATE
			0014
			TOTAL QUANTITY
58700300	CONCRETE SEALER	SQ FT	1,023,348
67100100	MOBILIZATION	L SUM	1
70100420	TRAFFIC CONTROL AND PROTECTION, STANDARD 701411	EACH	2
70100450	TRAFFIC CONTROL AND PROTECTION, STANDARD 701201	L SUM	1
70100700	TRAFFIC CONTROL AND PROTECTION, STANDARD 701406	L SUM	1
70102620	TRAFFIC CONTROL AND PROTECTION, STANDARD 701501	L SUM	1
70102625	TRAFFIC CONTROL AND PROTECTION, STANDARD 701606	L SUM	1
70102630	TRAFFIC CONTROL AND PROTECTION, STANDARD 701601	L SUM	1

FILE NAME =	USER NAME = duncenbd	DESIGNED -	REVISED -	STATE OF ILLINOIS DEPARTMENT OF TRANSPORTATION	SUMMARY OF QUANTITIES				F.A. RTE.	SECTION	COUNTY	TOTAL SHEETS	SHEET NO.	
ci:\pwork\p\idost\duncenbd\8288642\036687.sht-detailed.dgn	6687.sht-detailed.dgn	DRAWN -	REVISED -		SCALE:	SHEET NO.	OF	SHEETS	STA.	TO STA.	VAR	VARIOUS	9	3
PLOT SCALE = 100.0000 / 1 in.		CHECKED -	REVISED -		*03 BRIDGE DECK SEALING 2013 CONTRACT NO. 66887									
PLOT DATE = 8/17/2012		DATE -	REVISED -		ILLINOIS FED. AID PROJECT									

CONCRETE SEALER

STRUCTURE NUMBER	FACILITY CARRIED	APPROXIMATE LOCATION	FEATURE CROSSED	DECK WIDTH FEET	PARAPET SURFACE FEET	MEDIAN SURFACE FEET	DECK LENGTH FEET	SEAL AREA SQ FT	TRAFFIC CONTROL AND PROTECTION STANDARD
FORD COUNTY									
NON-INTERSTATE									
027-0044	ILL 116	1.1 MI E OF ILL 115	KELLY CREEK	32			106	3,392	701201
027-0071	ILL 115	2.0 MI S OF ILL 116	KELLY CREEK	32	4.4		146	5,314	701201
027-0076	ILL 54	2.7 MI S ILL 54/115	E BR VERMILION RIVER	32	7.4		91	3,585	701201
027-0078	ILL 9	0.9 MI E OF ELLIOT RD	DRAINAGE DITCH	32	7.4		48	1,891	701201
027-0079	US 24	1.2 MI W OF ILL 115	DRAINAGE DITCH	40	7.4		69	3,271	701201
027-0080	US 24	0.5 MI E ILL 115	N F VERMILION RIVER	40	7.4		93	4,408	701201
027-0081	US 24	1.1 MI E OF ILL 115	N F VERMILION RIVER	40	7.4		99.4	4,712	701201
027-0082	ILL 115	7.8 MI N OF ILL 9	TRIB OF SPRING CREEK	30	7.4		72.5	2,712	701201
027-0083	ILL 115	3.3 MI N OF ILL 9	E BR VERMILION RIVER	30	7.4		69.5	2,599	701201
027-0091	ILL 47	0.3 MI S OF ILL 165	MACKINAW RIVER	36	7.4		88.8	3,854	701201
027-0092	ILL 9	1.7 MI E OF ILL 47	DICKERSON SLOUGH	32	7.6		90	3,564	701201
027-0094	ILL 9	0.7 MI E OF ILL 115	WALL TOWN DR DITCH	32	7.6		122.8	4,863	701201
027-0095	ILL 115	3.4 MI S OF US 24	DITCH	32	7.6		72	2,851	701201
027-0096	ILL 9	0.1 MI W OF ILL 47	DRUMMER CREEK	32	7.6		134	5,306	701501
027-0097	ILL 115	2.4 MI OF ILL 116	DITCH	32	7.6		64	2,534	701201

FORD COUNTY SUB-TOTAL 54,857

LASALLE COUNTY INTERSTATE

050-0191	I-39, US 51	2.8 MI S OF I-80	ILL RIVER/ILL 351/BO RR	80	7.4	7.7	7155	680,441	701406, 701411
----------	-------------	------------------	-------------------------	----	-----	-----	------	---------	----------------

LASALLE COUNTY SUB-TOTAL 680,441

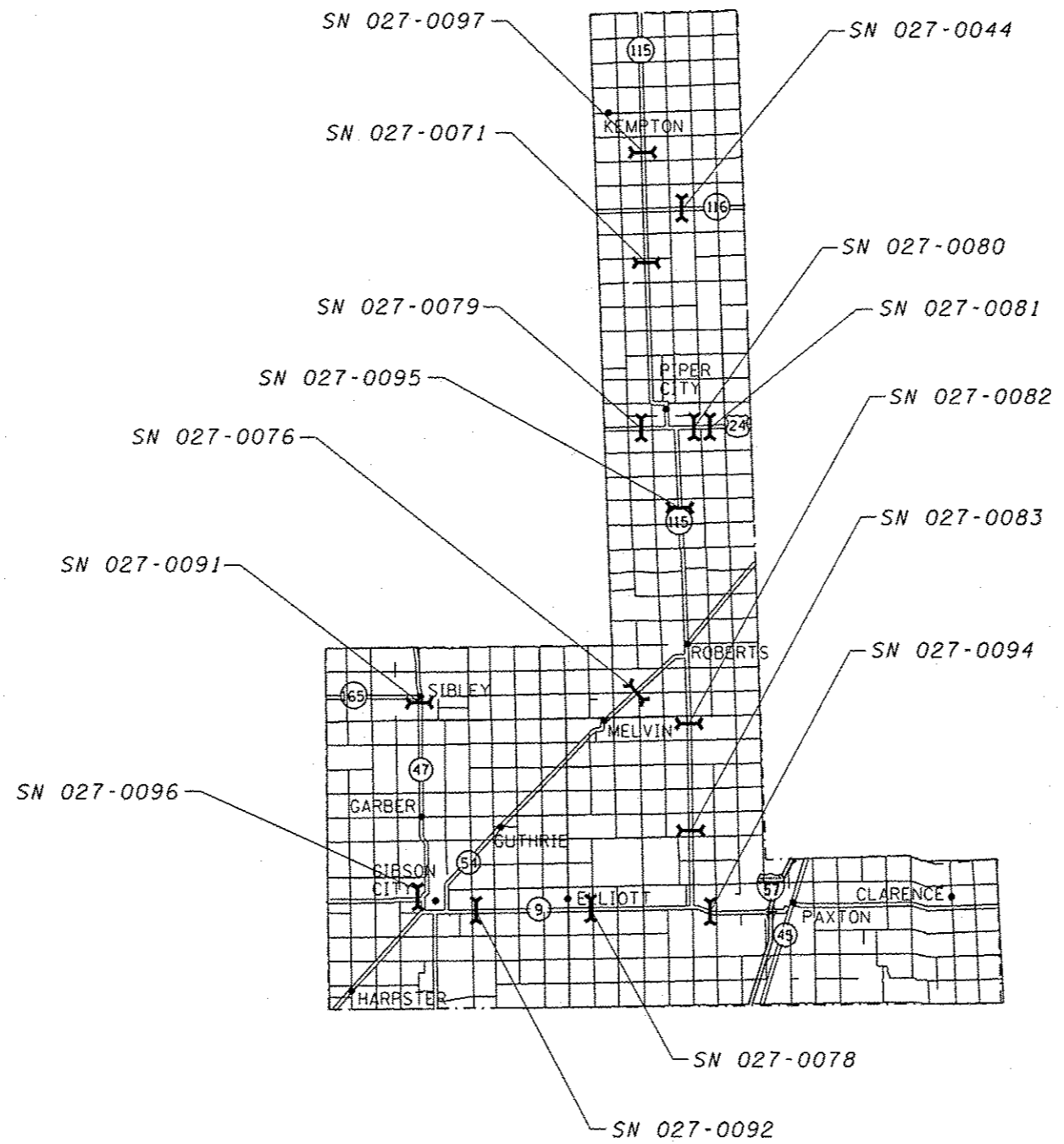
LIVINGSTON COUNTY INTERSTATE

053-0120	I-55 SOUTHBOUND	1.0 MILE NORTH OF MCLEAN COUNTY LINE	ROOKS CREEK	38.5	5		97	4,220	701406 *
053-0121	I-55 NORTHBOUND		CREEK	38.5	5		97	4,220	701406 *
053-0124	I-55 SOUTHBOUND	3 MILES SOUTHWEST OF PONTIAC	ROOKS CREEK	38.5	5		282	12,267	701406 *
053-0125	I-55 NORTHBOUND		CREEK	38.5	5		282	12,267	701406 *
053-0126	I-55 SOUTHBOUND	0.5 MILE NORTH OF ILL 116	ABANDONED ICG RAILROAD BED	38.5	5		148.8	6,473	701406 *
053-0127	I-55 NORTHBOUND		VERMILLION RIVER	38.5	5		148.8	6,473	701406, 701411 *
053-0128	I-55 SOUTHBOUND	WEST OF PONTIAC	VERMILLION RIVER	38.5	5		403.5	17,552	701406 *
053-0129	I-55 NORTHBOUND		RIVER	38.5	5		403.5	17,552	701406 *
053-0139	I-55 SOUTHBOUND	3 MILES SOUTHWEST OF DWIGHT	BRANCH WEST FORK MAZON RIVER	38.5	5		91.8	3,993	701406 *
053-0140	I-55 NORTHBOUND		MAZON RIVER	38.5	5		91.8	3,993	701406 *

* STRUCTURE HAS EXISTING PCC OVERLAY. ADDITIONAL DRYING TIME MAY BE REQUIRED.

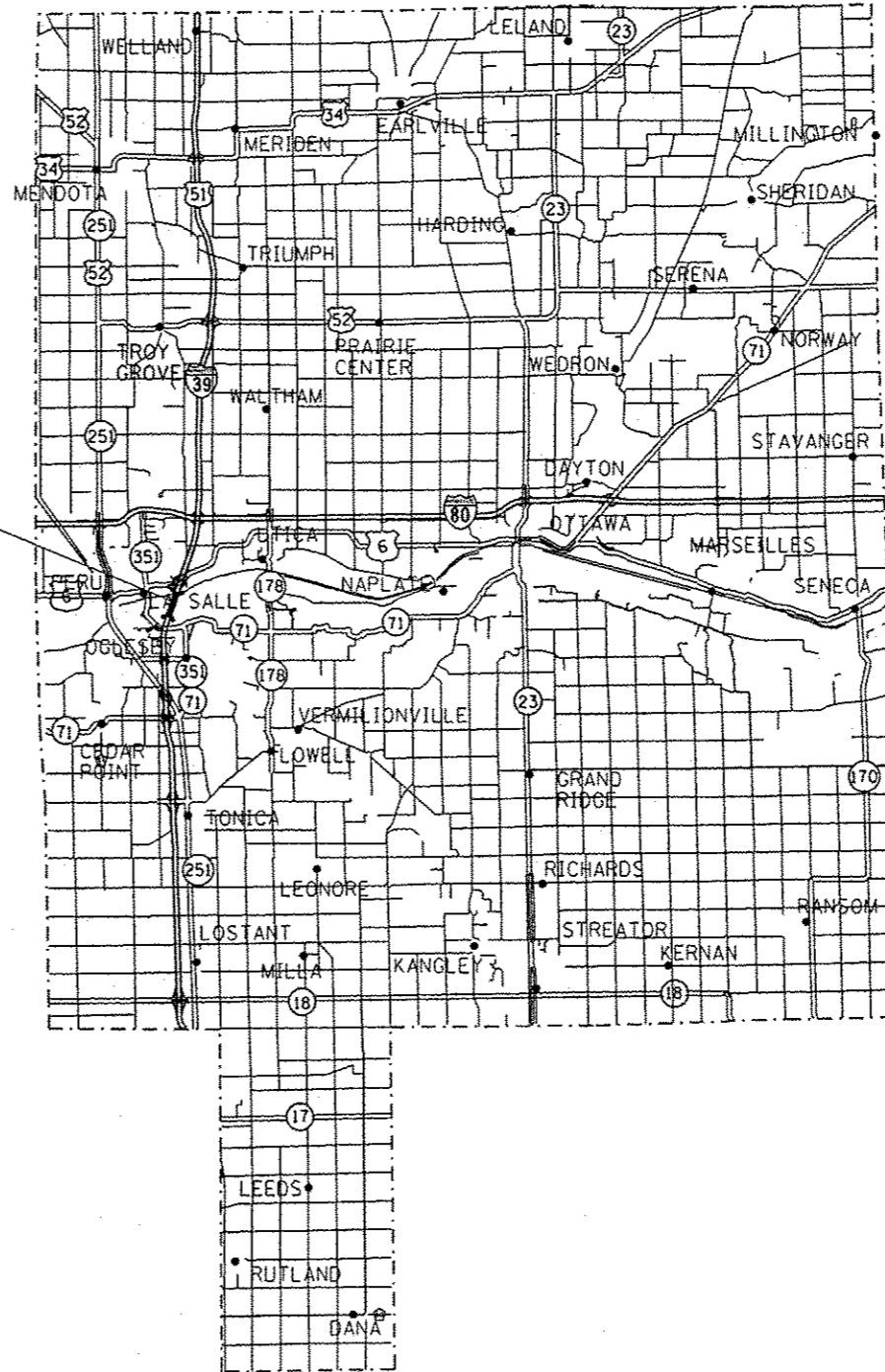
CONCRETE SEALER

STRUCTURE NUMBER	FACILITY CARRIED	APPROXIMATE LOCATION	FEATURE CROSSED	DECK WIDTH FEET	PARAPET SURFACE FEET	MEDIAN SURFACE FEET	DECK LENGTH FEET	SEAL AREA SQ FT	TRAFFIC CONTROL AND PROTECTION STANDARD
LIVINGSTON COUNTY NON-INTERSTATE									
053-0002	OLD RT 66/FAS 294	7.7 MI S OF ILL 116	DRAINAGE DITCH	32	1		74	2,442	701201
053-0003	OLD RT 66/FAS 294	4.5 MI S ILL 116	ROOKS CREEK	32	1		215.5	7,112	701201
053-0005	OLD RT 66/FAS 294	1.3 MI S ILL 116	TURTLE CREEK	33	1		63.2	2,149	701201
053-0007	ILL 116 EASTBOUND	0.6 MILE SOUTH OF ILL 23	VERMILLION RIVER	40	7.4		229	10,855	701601
053-0008	ILL 116 WESTBOUND		RIVER	40	7.4		229	10,855	701601
053-0019	US 24	EAST EDGE FAIRBURY	INDIAN CREEK	39.3	7.4		163	7,612	701201
053-0026	ILL 17	1.3 MI E JCT ILL 17 & 23	VERMILLION RIVER	32	7.4		324.1	12,770	701201
053-0027	ILL 17	2.5 MI E JCT ILL 17 & 23	DRAINAGE DITCH	32	7.4		60.8	2,396	701201
053-0038	ILL 17	0.2 MI W OF ILL 47	GOOSEBERRY CREEK	44	1.6		32	1,459	701501
053-0047	ILL 47	0.3 MI N OF ILL 116	5 MILE CREEK	32	7.4		124.8	4,917	701201
053-0062	ILL 116	8.0 MI W OF I-55	SCATTERING POINT CR	43.5	1.6		63.5	2,864	701201
053-0064	ILL 116	3.9 MI W OF I-55	ROOKS CREEK	39.4	1.2		75.8	3,077	701201
053-0065	ILL 116	2.7 MI W OF I-55	ROOKS CREEK	42.5	5		151.7	7,206	701201
053-0066	ILL 116	1.1 MI E OF I-55	TURTLE CREEK	48	1.6	4	54.5	2,921	701606
053-0075	ILL 116	2.9 MI W OF ILL 47	FELKY SLOUGH	36			116	4,176	701201
053-0147	ILL 17	4.5 MI E OF ILL 47	GOOSEBERRY CR TRIB	32	7.6		118.8	4,704	701201
053-0148	ILL 23	0.7 MI N OF I-55	WOLF CREEK	46			91	4,186	701201
053-0150	ILL 17	6.1 MI E OF ILL 47	MAZON RIVER	36	7.6		181.6	7,918	701201
053-0153	ILL 23	1.1 MI S OF ILL 17	PRAIRIE CREEK	32			145.4	4,653	701201
053-0160	ILL 17	1.0 MI E OF ILL 23	PRAIRIE CREEK	32	7.4		80.3	3,164	701201
053-0162	ILL 170	3.8 MI S OF ILL 17	BR OF MUD CREEK	32	7.4		59.5	2,344	701201
053-0163	ILL 170	4.3 MI S OF ILL 17	BR OF MUD CREEK	32	7.4		67.8	2,671	701201
053-0164	ILL 170	6.2 MI S OF ILL 17	BR OF MUD CREEK	32	7.4		43.2	1,702	701201
053-0165	ILL 170	6.9 MI S OF ILL 17	BR OF BAKER RUN	32	7.4		54.9	2,163	701201
053-0166	ILL 47	0.9 MI S ILL 116	5 MILE CREEK	32	7.4		150.9	5,945	701201
053-0167	ILL 17	2.8 MI E OF ILL 17/23	DRAINAGE DITCH	32	7.4		107	4,216	701201
053-0168	ILL 47	0.4 MI S OF US 24	VERMILION RIVER	36	7.4		181.5	7,877	701501
053-0169	ILL 47	8.9 MI S OF US 24	INDIAN CREEK	36	7.4		91.3	3,962	701201
053-0170	ILL 47	0.2 MI S OF ILL 116	5 MILE CREEK	50.7	7.4		98	5,694	701201
053-0174	ILL 23	2.1 MI S OF I-55	NORTH CREEK	40	7.4		83.8	3,972	701201
053-0175	FAU 6322/OLD 66 NB	0.1 MILES NORTH OF IL 23	INTERMITTENT STREAM	33.9	1		121.4	4,237	701601
053-0176	FAU 6322/OLD 66 SB		STREAM	33.9	1		121.4	4,237	701601
053-0177	ILL 23	1.3 MI W OF CORNELL	VERMILLION RIVER	32	7.6		334	13,226	701201
053-0178	ILL 116	2.2 MI E OF ILL 47	5 MILE CREEK	32	7.6		92	3,643	701201
053-0179	ILL 47	3.6 MI S OF ILL 116	VERMILION RIVER	36	7.6		192	8,371	701201
053-0181	ILL 116	0.04 MI W OF ILL 47	5 MILE CREEK	46	7.6		91	4,878	701201
053-0182	ILL 17	3.4 MI E OF ILL 47	DRAINAGE DITCH	36	7.6		105	4,578	701201
053-0183	ILL 23	5.7 MI S OF ILL 17	MOLE CREEK	32	7.6		107.5	4,257	701201
053-0185	ILL 17	7.7 MI E OF ILL 47	STREAM	36	7.6		83.3	3,632	701201
LIVINGSTON COUNTY SUB-TOTAL								288,050	
TOTAL								1,023,348	



FORD COUNTY

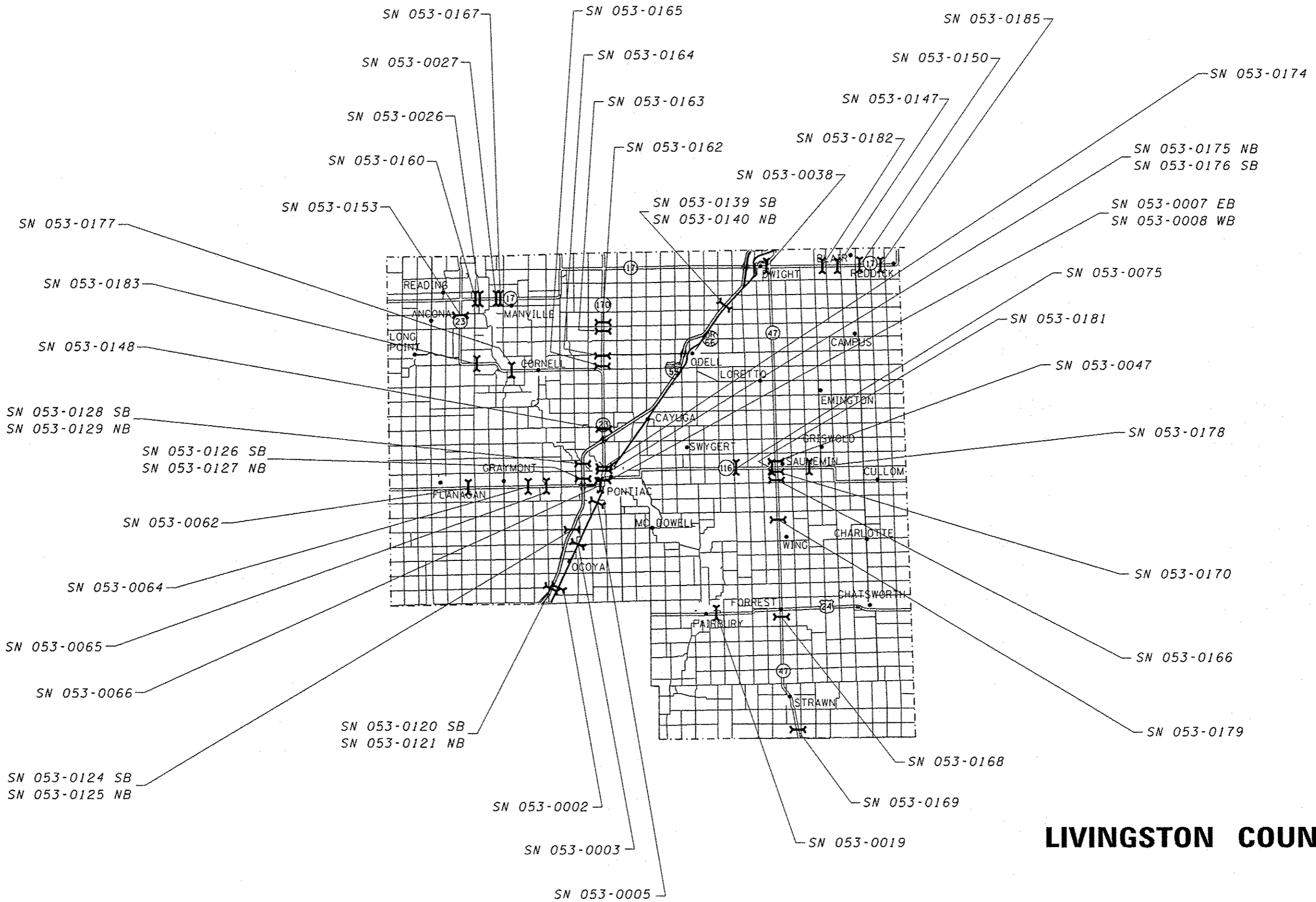
FILE NAME = c:\pwwork\pwwork\duncanbd\0280642\0306807-sht-detail.dgn	USER NAME = duncanbd	DESIGNED -	REVISED -	STATE OF ILLINOIS DEPARTMENT OF TRANSPORTATION	FORD COUNTY LOCATION MAP			F.A. RTE.	SECTION	COUNTY	TOTAL SHEETS	SHEET NO.	
	PLOT SCALE = 100.0000 / 1 in.	DRAWN -	REVISED -					VAR	-	VARIOUS	9	6	
	PLotted DATE = 8/17/2012	CHECKED -	REVISED -					+03 BRIDGE DECK SEALING 2013		CONTRACT NO. 66887		ILLINOIS FED. AID PROJECT	
	DATE -	REVISED -	SCALE:					SHEET NO.	OF SHEETS	STA.	TO STA.		



SN 050-0191

LASALLE COUNTY

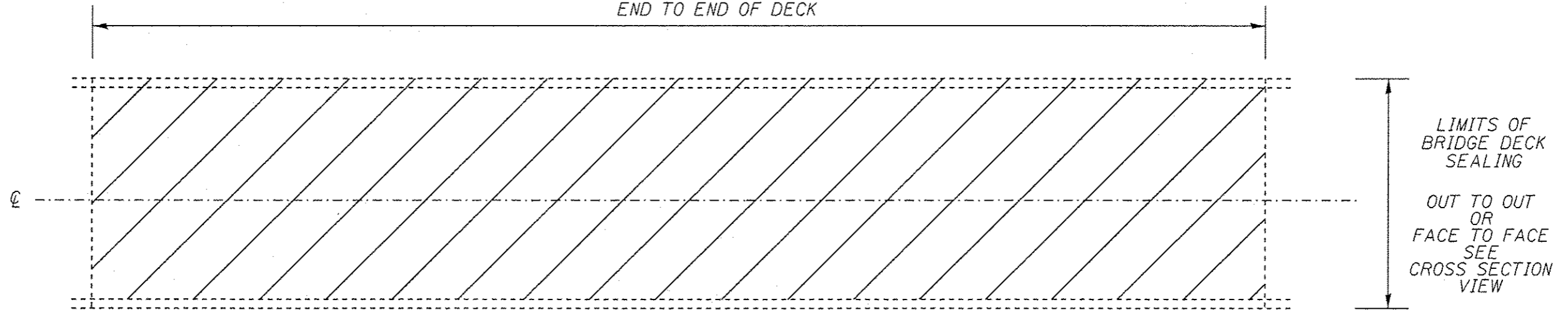
FILE NAME =	USER NAME = duncanbd	DESIGNED -	REVISED -	STATE OF ILLINOIS DEPARTMENT OF TRANSPORTATION	LASALLE COUNTY LOCATION MAP			F.A. RTE.	SECTION	COUNTY	TOTAL SHEETS	SHEET NO.		
cr:\p\work\pav\dot\duncanbd\08298642\0366887-shr-detail.dgn		DRAWN -	REVISED -		SCALE:	SHEET NO.	OF	SHEETS	STA.	TO STA.	VAR	VARIOUS	9	7
	PLOT SCALE = 100.0000' / in.	CHECKED -	REVISED -								*03 BRIDGE DECK SEALING 2013 CONTRACT NO. 66887			
	PLOT DATE = 8/17/2012	DATE -	REVISED -								ILLINOIS FED. AID PROJECT			



LIVINGSTON COUNTY

FILE NAME = c:\p\work\p\dot\duncenbd\0288542\036687-ahf-details.dgn	USER NAME = duncenbd	DESIGNED -	REVISED -	STATE OF ILLINOIS DEPARTMENT OF TRANSPORTATION	LIVINGSTON COUNTY LOCATION MAP			F.A. RTE.	SECTION	COUNTY	TOTAL SHEETS	SHEET NO.	
		DRAWN -	REVISED -		SCALE:	SHEET NO.	OF	SHEETS	STA.	TO STA.	VARIOUS	9	8
		CHECKED -	REVISED -								*03 BRIDGE DECK SEALING 2013	CONTRACT NO. 66887	
		DATE -	REVISED -								ILLINOIS FED. AID PROJECT		

LIMITS OF BRIDGE DECK SEALING
END TO END OF DECK

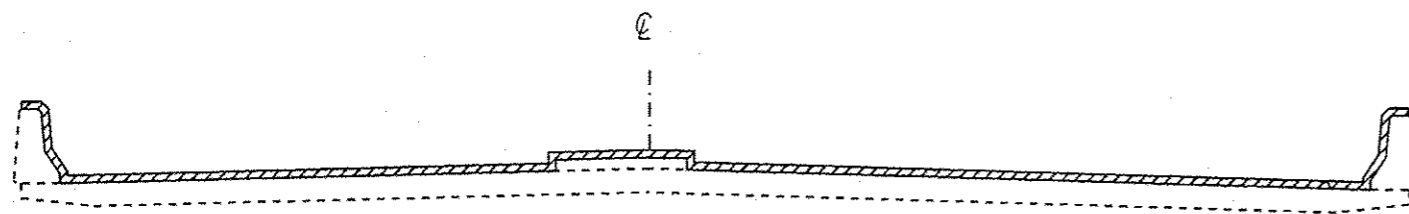


PLAN VIEW

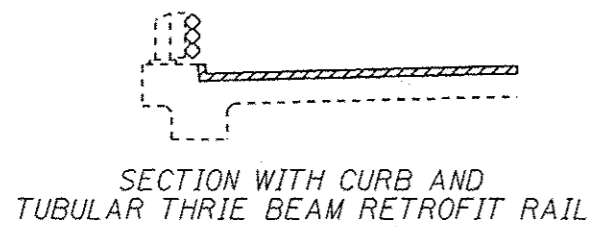
NOTE: BRIDGE APPROACH PAVEMENT SHALL NOT BE SEALED.

EXISTING PAVEMENT MARKINGS SHALL BE TEMPORARILY COVERED PRIOR TO APPLICATION OF THE DECK SURFACE TREATMENT, TO PREVENT THE MATERIAL FROM BEING APPLIED TO THE MARKINGS AND TO PROTECT THE REFLECTIVE PROPERTIES OF THE MARKINGS. THE TEMPORARY COVERING MATERIAL USED SHALL BE SUCH THAT IT WILL NOT AFFECT THE MARKING'S REFLECTIVITY WHEN REMOVED AFTER APPLICATION OF THE DECK SURFACE TREATMENT AND PRIOR TO OPENING TO TRAFFIC. COST INCLUDED WITH CONCRETE SEALER.

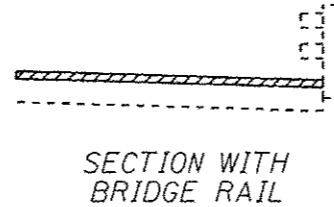
EXISTING EXPANSION JOINTS SHALL BE TEMPORARILY COVERED, PRIOR TO APPLICATION OF THE DECK SURFACE TREATMENT, TO PREVENT THE MATERIAL FROM BEING APPLIED TO THE JOINTS. THE TEMPORARY COVERING SHALL BE REMOVED AFTER THE APPLICATION OF THE DECK SURFACE TREATMENT AND PRIOR TO OPENING TO TRAFFIC. COST IS INCLUDED WITH CONCRETE SEALER.



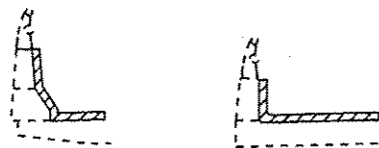
SECTION WITH
PARAPET AND MEDIAN



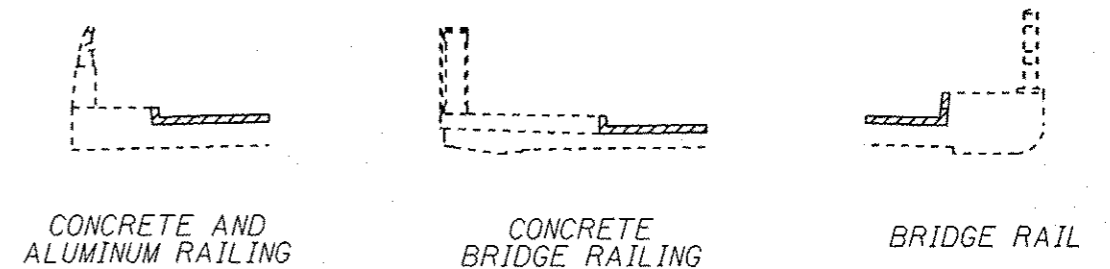
SECTION WITH CURB AND
TUBULAR THRIE BEAM RETROFIT RAIL



SECTION WITH
BRIDGE RAIL



SECTION WITH CONCRETE
AND ALUMINUM RAILING



CONCRETE AND
ALUMINUM RAILING

CONCRETE
BRIDGE RAILING

BRIDGE RAIL

VARIOUS SECTIONS WITH SIDEWALK AND/OR CONCRETE CURB

AREA TO BE SEALED

NOT TO SCALE

FILE NAME *	USER NAME * duncanbd	DESIGNED -	REVISED -	STATE OF ILLINOIS DEPARTMENT OF TRANSPORTATION	BRIDGE AND PARAPET SEALING DETAILS			F.A. RTE.	SECTION	COUNTY	TOTAL SHEETS	SHEET NO.
dr:\pwork\pwork\duncanbd\0288642\036687-shl\rdetail.dgn		DRAWN -	REVISED -					VAR		VARIOUS	9	9
	PLOT SCALE * 100.0000 / 1 in.	CHECKED -	REVISED -		*03 BRIDGE DECK SEALING 2013			CONTRACT NO. 66B87				
	PLOT DATE * 8/17/2012	DATE -	REVISED -		SCALE:	SHEET NO.	OF SHEETS	STA.	TO STA.	ILLINOIS FED. AID PROJECT		