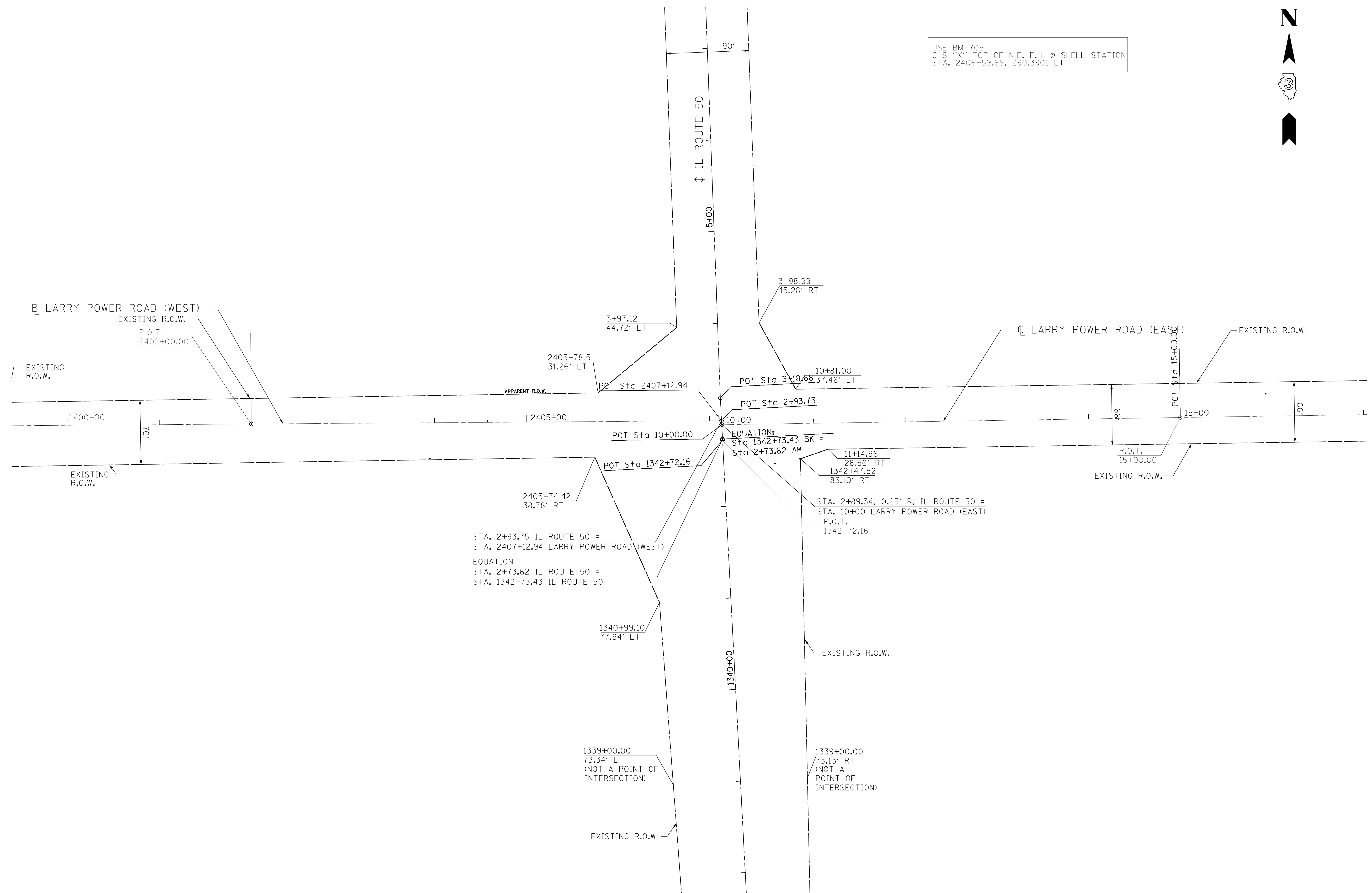




USE BM 709
 CHS "X" TOP OF N.E. F.H. @ SHELL STATION
 STA. 2406+59.68, 290.3901 LT



STA. 2+93.75 IL ROUTE 50 =
 STA. 2407+12.94 LARRY POWER ROAD (WEST)
 EQUATION
 STA. 2+73.62 IL ROUTE 50 =
 STA. 1342+73.43 IL ROUTE 50

STA. 2+89.34, 0.25' R, IL ROUTE 50 =
 STA. 10+00 LARRY POWER ROAD (EAST)
 P.O.T.
 1342+72.16

FILE NAME =	USER NAME = mcfaddenka	DESIGNED -	REVISED -
C:\pwork\work\pwork\mcfaddenka\0304617\0366C32-sht-cover.dgn		DRAWN -	REVISED -
	PLOT SCALE = 50.0000' / in.	CHECKED -	REVISED -
	PLOT DATE = 8/24/2012	DATE -	REVISED -

**STATE OF ILLINOIS
 DEPARTMENT OF TRANSPORTATION**

**FAP 840 (IL 50)
 CENTERLINE CONTROL AND R.O.W.**

SCALE: N.T.S. SHEET NO. OF SHEETS STA. TO STA.

F.A.P. RTE.	SECTION	COUNTY	TOTAL SHEETS	SHEET NO.
840	(140)N, TS-3	KANKAKEE	29	14
CONTRACT NO. 66C32				
ILLINOIS FED. AID PROJECT				