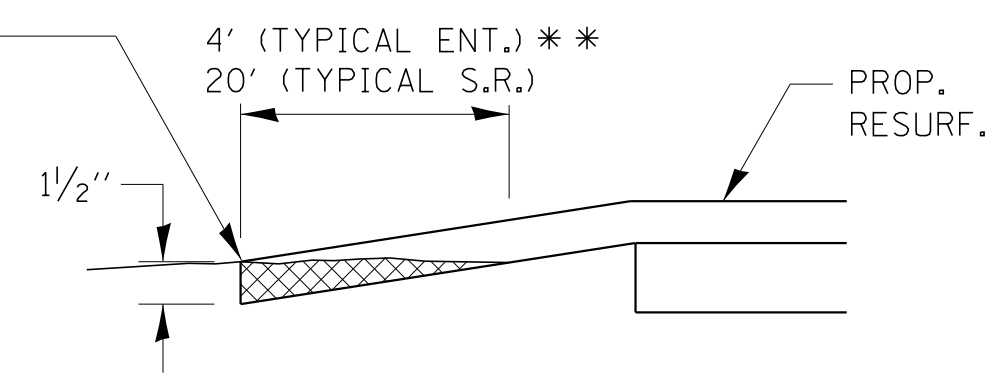


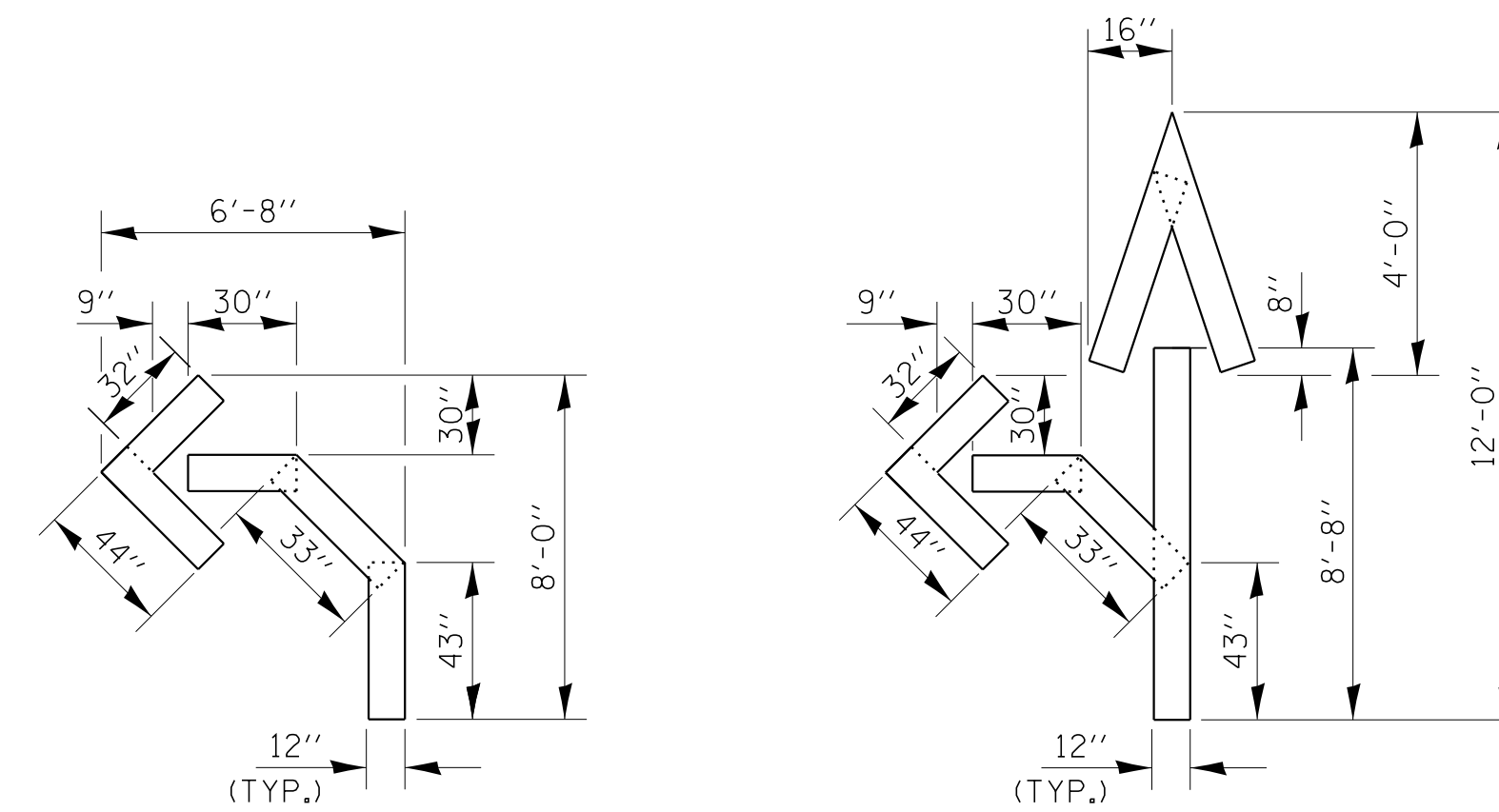
SECTION A-A
DETAILS AT ENTRANCES

THE COST OF REMOVAL AT EXISTING HMA OR P.C.C. LOCATIONS SHALL BE PAID FOR PER SQ. YD. BY THE APPROPRIATE PAY ITEM. REMOVAL AT THE EXISTING AGG. LOCATIONS SHALL BE INCIDENTAL TO THE HMA. A-3 LOCATIONS SHALL BE FEATHER TAPERED.



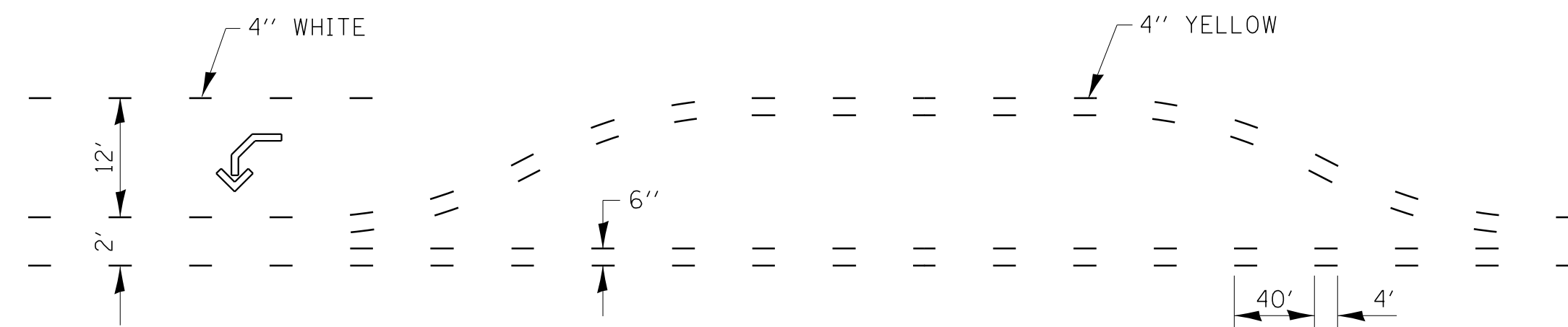
DETAIL A

** PROPOSED HMA RESURFACING AT PUBLIC EDUCATIONAL FACILITY ENTRANCES SHALL BE EXTENDED TO THE RIGHT-OF-WAY LIMITS.

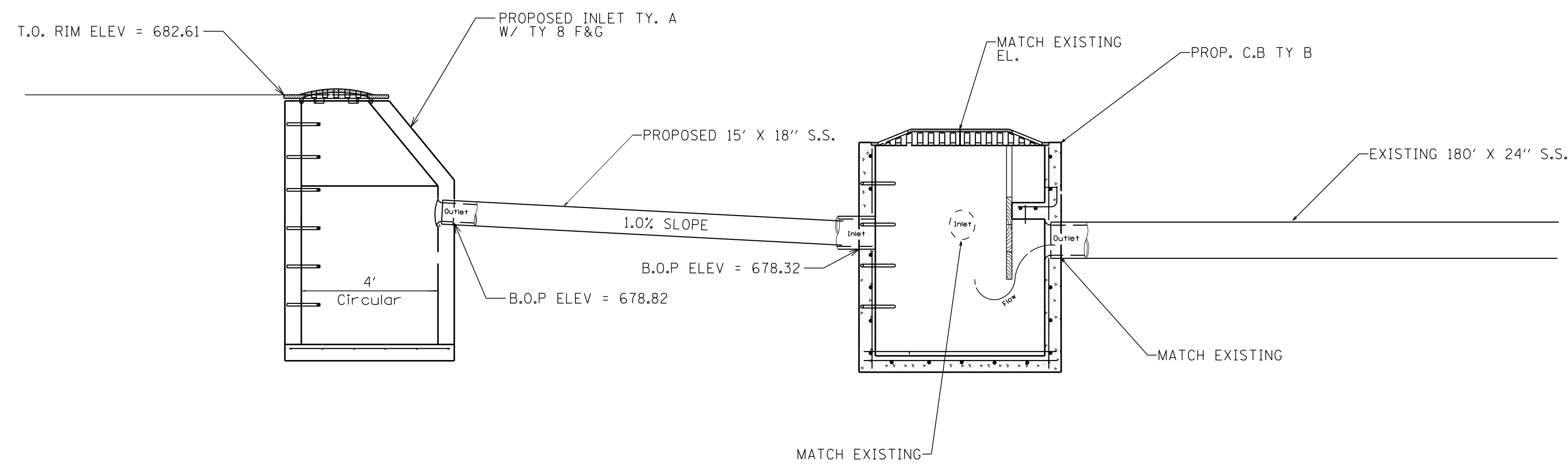


QUANTITY
12" LINE = 16 LIN. FT.
OR 4" LINE = 48 LIN. FT.

QUANTITY
12" LINE = 29 LIN. FT.
OR 4" LINE = 87 LIN. FT.



SHORT-TERM PAVEMENT MARKING
FOR MEDIANS AND ARROWS



CATCH BASIN
CONNECTION DETAIL

FILE NAME =	USER NAME = mcfaddenka	DESIGNED -	REVISED -
C:\pwork\work\pwork\mcfaddenka\0304617\0366C32-sht-cover.dgn		DRAWN -	REVISED -
		CHECKED -	REVISED -
		DATE -	REVISED -

STATE OF ILLINOIS
DEPARTMENT OF TRANSPORTATION

FAP 840 (IL 50)			
CADD DETAILS			
SCALE:	SHEET	OF	SHEETS
		STA.	TO STA.

F.A.P. RTE.	SECTION	COUNTY	TOTAL SHEETS	SHEET NO.
840	(140)N, TS-3	KANKAKEE	29	24
CONTRACT NO. 66C32			ILLINOIS FED. AID PROJECT	