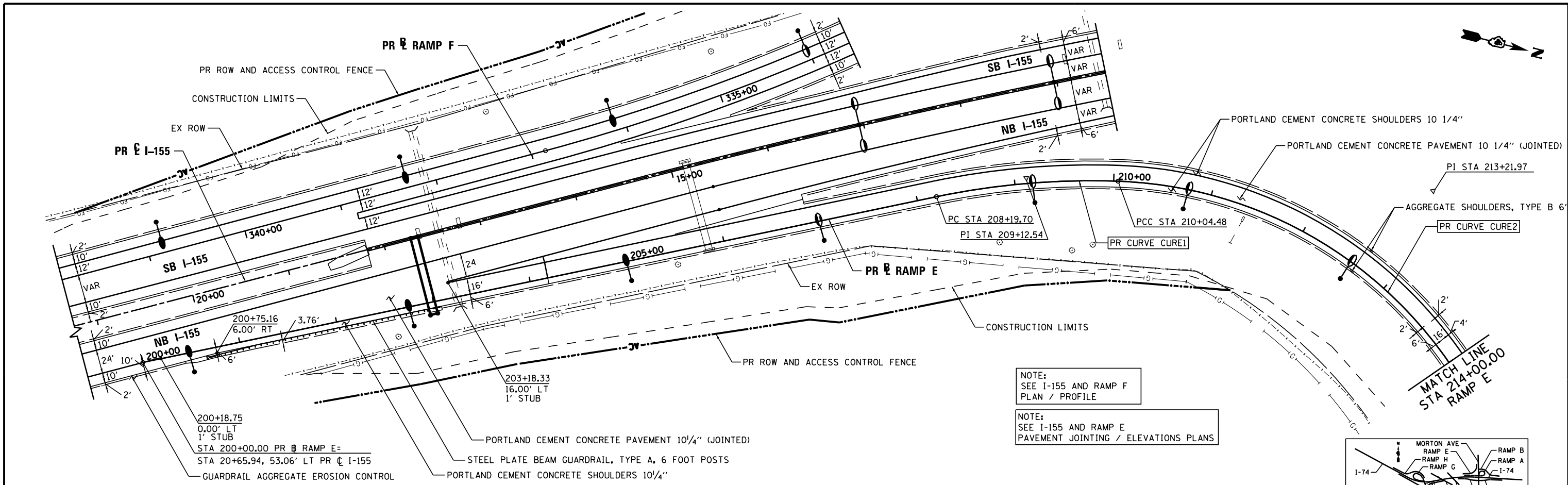


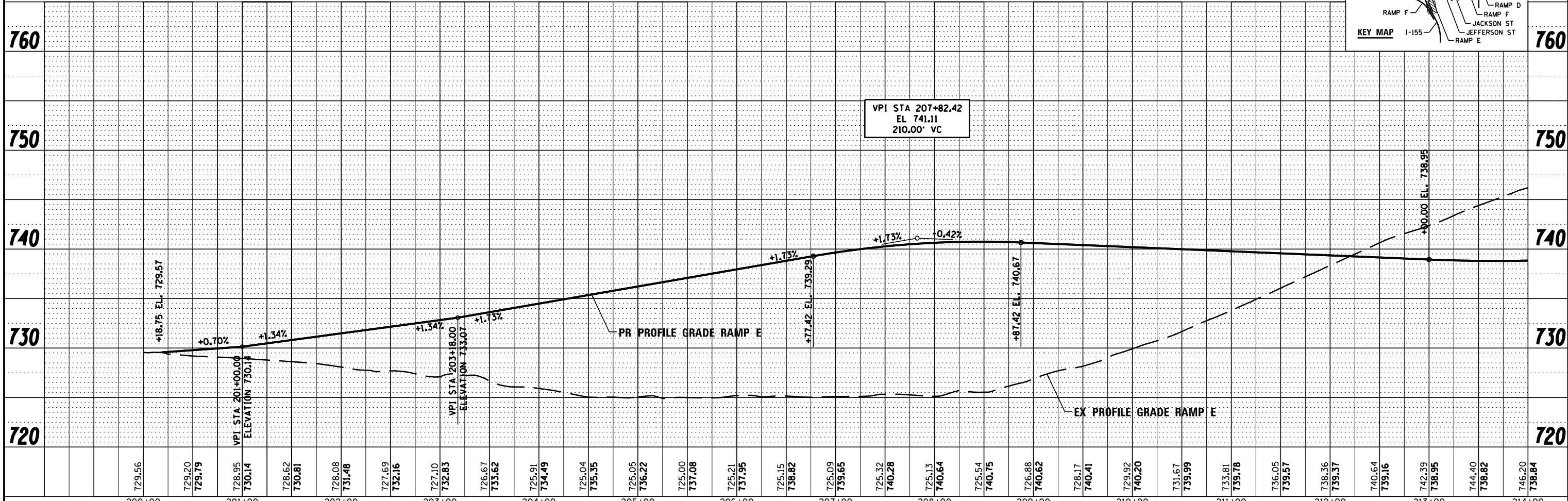
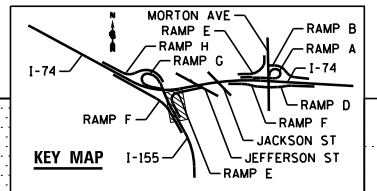
PLAN	SURVEYED	DATE
	PLOTTED	BY
	ALIGNED	CHECKED
	NOTE BOOK	NO.
	FILE NAME	

PROFILE	SURVEYED	DATE
	PLOTTED	BY
	GRADES CHECKED	CHECKED
	STRUCTURE	NOT AT THIS OFFICE
	NO.	



NOTE:  
SEE I-155 AND RAMP F  
PLAN / PROFILE

NOTE:  
SEE I-155 AND RAMP E  
PAVEMENT JOINTING / ELEVATIONS PLANS



FILE NAME =	DESIGNED - AJP	REVISED -		<b>STATE OF ILLINOIS</b> <b>DEPARTMENT OF TRANSPORTATION</b>		<b>PLAN AND PROFILE</b> <b>I-155 RAMP E</b>		F.A.I. RT.	SECTION	COUNTY	TOTAL SHEETS	SHEET NO.
...D468620-shr-I-155-RampE-plnpr f17.dgn	DRAWN - TMB	REVISED -						90-114R(14HB-4,14HBV)BRJ	TAZEWELL	2433	223	
USER NAME = tblank	CHECKED - JNR	REVISED -						CONTRACT NO. 68620				
PLOT DATE = 7/17/2012	DATE - JULY 20, 2012	REVISED -						ILLINOIS FED. AID PROJECT				