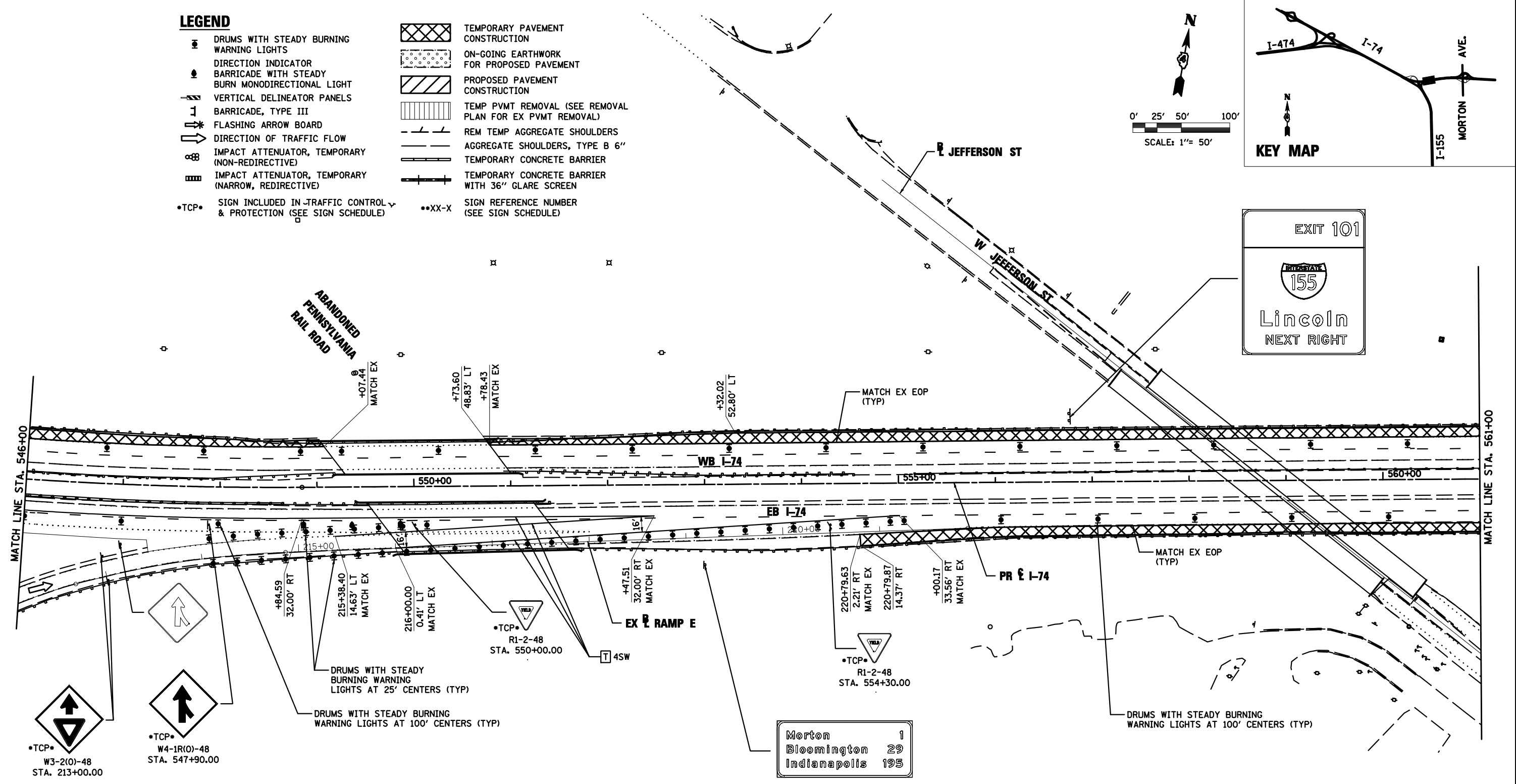
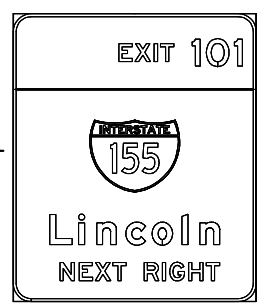
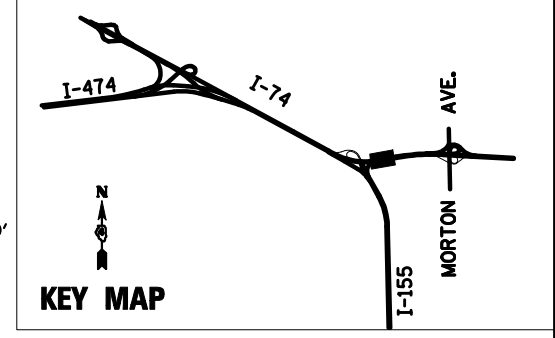
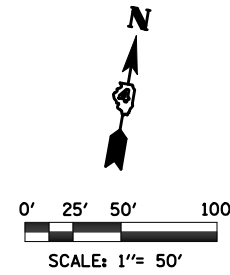


**LEGEND**

- DRUMS WITH STEADY BURNING WARNING LIGHTS
- ▲ DIRECTION INDICATOR
- BARRICADE WITH STEADY BURN MONODIRECTIONAL LIGHT
- ▬ VERTICAL DELINEATOR PANELS
- ⊥ BARRICADE, TYPE III
- FLASHING ARROW BOARD
- ⇨ DIRECTION OF TRAFFIC FLOW
- ⊗ IMPACT ATTENUATOR, TEMPORARY (NON-REDIRECTIVE)
- ⊕ IMPACT ATTENUATOR, TEMPORARY (NARROW, REDIRECTIVE)
- TCP• SIGN INCLUDED IN TRAFFIC CONTROL & PROTECTION (SEE SIGN SCHEDULE)
- TEMPORARY PAVEMENT CONSTRUCTION
- ▨ ON-GOING EARTHWORK FOR PROPOSED PAVEMENT
- ▩ PROPOSED PAVEMENT CONSTRUCTION
- ▤ TEMP PVMT REMOVAL (SEE REMOVAL PLAN FOR EX PVMT REMOVAL)
- ▧ REM TEMP AGGREGATE SHOULDERS
- ▨ AGGREGATE SHOULDERS, TYPE B 6"
- ▬ TEMPORARY CONCRETE BARRIER
- ▬ TEMPORARY CONCRETE BARRIER WITH 36" GLARE SCREEN
- XX-X SIGN REFERENCE NUMBER (SEE SIGN SCHEDULE)



**NOTE**

1. ALL WORK THAT WILL REQUIRE A LANE CLOSURE WILL BE DONE IN OFF-PEAK HOURS.
2. EXISTING SIGNS SHOWN FOR REFERENCES. ALL EXISTING OVERHEAD AND GROUND-MOUNTED SIGNS SHALL BE RETAINED IN THE MOT PRE-PHASE UNLESS OTHERWISE NOTED.
3. SEE SPECIAL PROVISIONS FOR WORK RESTRICTIONS

**PAVEMENT MARKING LEGEND**

①	EXISTING PAVEMENT MARKING	4SW	4" SOLID WHITE	8SW	8" SOLID WHITE
②	PAVEMENT MARKING FROM PREVIOUS STAGE	4SY	4" SOLID YELLOW	12SW	12" SOLID WHITE ● 20' SPACING
③	PROPOSED PAVEMENT MARKING IN PLACE (SEE PROPOSED PAVEMENT MARKING PLAN)	4SYY	4" SOLID DOUBLE YELLOW (11" C-C)	12SY	12" SOLID YELLOW ● 20' SPACING
⊥	PAVEMENT MARKING TAPE, TYPE III	4KW	4" SKIP-DASH WHITE (30' SKIP, 10' DASH)	24SW	24" SOLID WHITE STOP BAR
P	POLYUREA PAVEMENT MARKING TYPE II	4DW	4" DOTTED WHITE (9' SKIP, 3' DASH)	LSW	LETTERS AND SYMBOLS, WHITE

FILE NAME =	DESIGNED - HTL	REVISED -
D468620-shr-staging10 174-B-00.dgn	DRAWN - HTL	REVISED -
USER NAME = TERRA	CHECKED - DA/LVA	REVISED -
PLOT DATE = 7/16/2012	DATE - 7/20/2012	REVISED -



**STATE OF ILLINOIS  
DEPARTMENT OF TRANSPORTATION**

**MAINTENANCE OF TRAFFIC  
PRE STAGE - SUB STAGE B**

SCALE: SHEET NO. 25 OF 50 SHEETS STA. 546+00 TO STA. 561+00

F.A.I. RTE.	SECTION	COUNTY	TOTAL SHEETS	SHEET NO.
90-[14R(14HB-4,14,14HB)/BR]		TAZEWELL	2433	298
CONTRACT NO. 68620				
ILLINOIS FED. AID PROJECT				