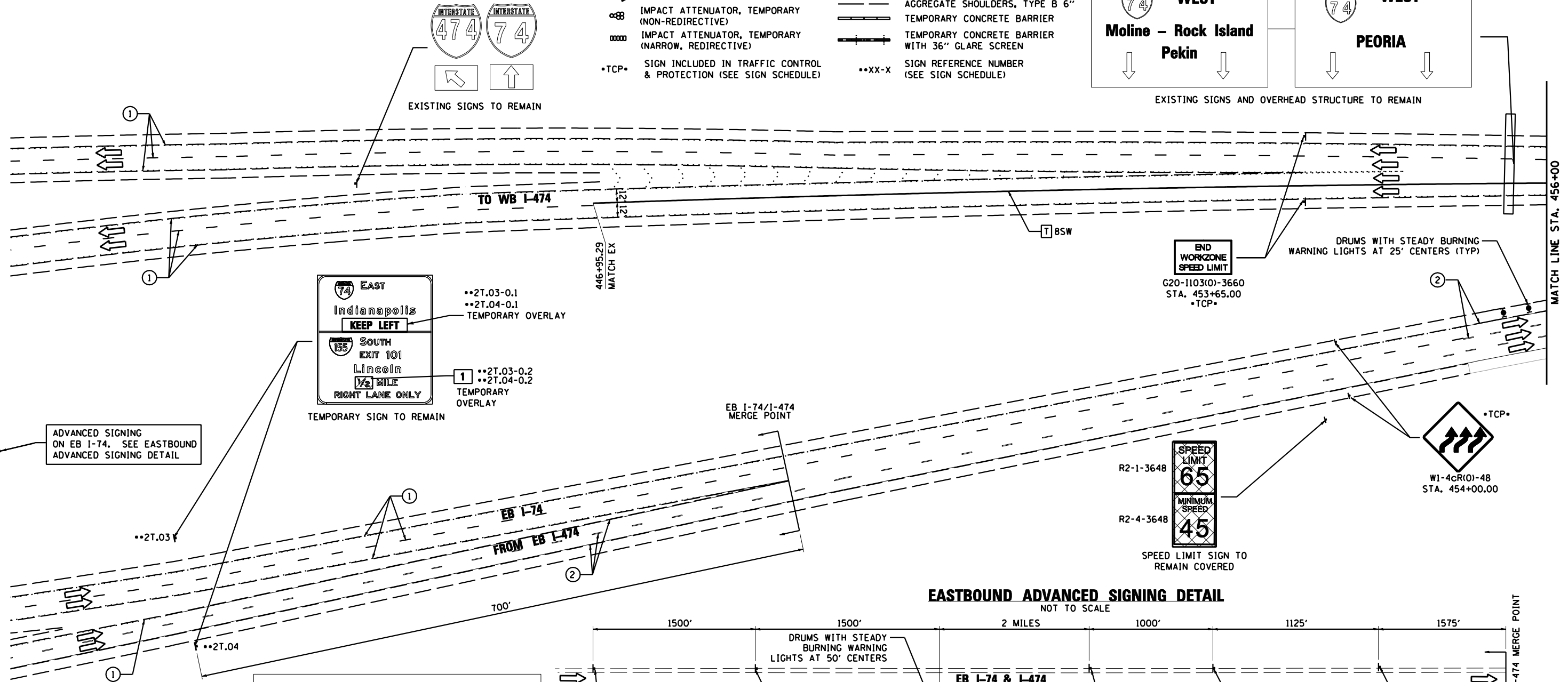
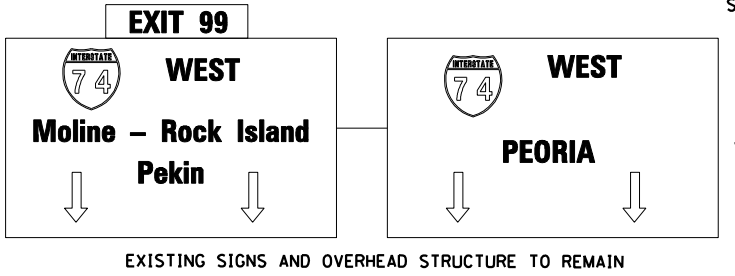
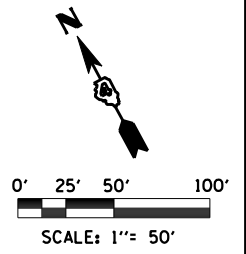


PAVEMENT MARKING LEGEND

- | | | |
|---|---|-------------------------------------|
| ① EXISTING PAVEMENT MARKING | 4SW 4" SOLID WHITE | 8SW 8" SOLID WHITE |
| ② PAVEMENT MARKING FROM PREVIOUS STAGE | 4SY 4" SOLID YELLOW | 12SW 12" SOLID WHITE @ 20' SPACING |
| ③ PROPOSED PAVEMENT MARKING IN PLACE (SEE PROPOSED PAVEMENT MARKING PLAN) | 4SYY 4" SOLID DOUBLE YELLOW (11" C-C) | 12SY 12" SOLID YELLOW @ 20' SPACING |
| T PAVEMENT MARKING TAPE, TYPE III | 4KW 4" SKIP-DASH WHITE (30' SKIP, 10' DASH) | 24SW 24" SOLID WHITE STOP BAR |
| P POLYUREA PAVEMENT MARKING TYPE II | 4DW 4" DOTTED WHITE (9' SKIP, 3' DASH) | LSW LETTERS AND SYMBOLS, WHITE |

LEGEND

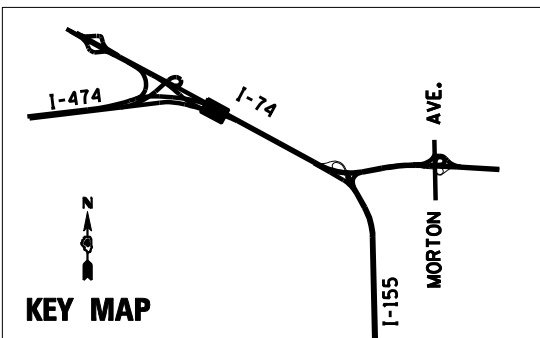
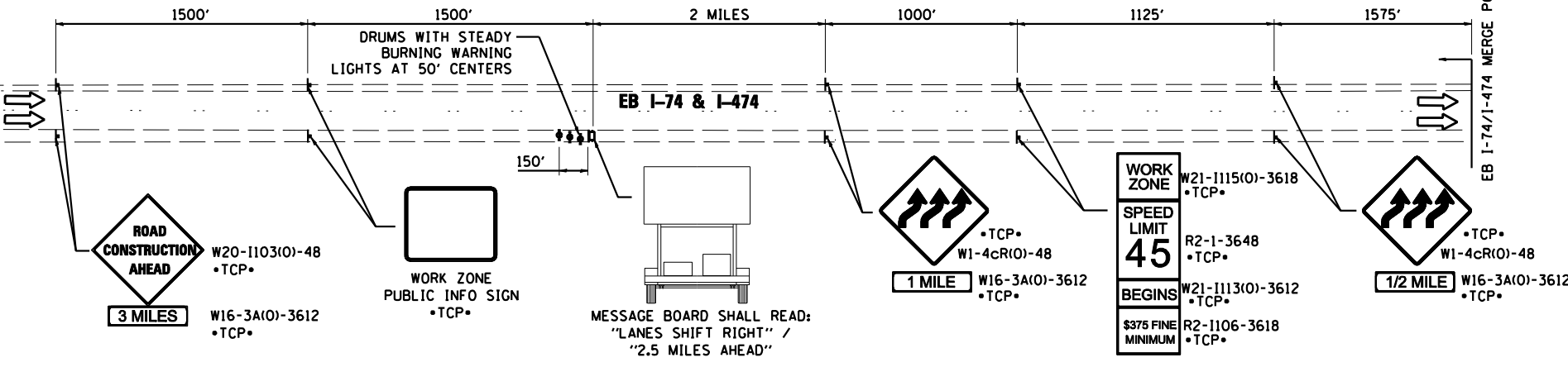
- | | |
|---|--|
| • DRUMS WITH STEADY BURNING WARNING LIGHTS | TEMPORARY PAVEMENT CONSTRUCTION |
| • DIRECTION INDICATOR | ON-GOING EARTHWORK FOR PROPOSED PAVEMENT |
| • BARRICADE WITH STEADY BURN MONODIRECTIONAL LIGHT | PROPOSED PAVEMENT CONSTRUCTION |
| • VERTICAL DELINEATOR PANELS | TEMP PVMT REMOVAL (SEE REMOVAL PLAN FOR EX PVMT REMOVAL) |
| • BARRICADE, TYPE III | REM TEMP AGGREGATE SHOULDERS |
| • FLASHING ARROW BOARD | AGGREGATE SHOULDERS, TYPE B 6" |
| • DIRECTION OF TRAFFIC FLOW | TEMPORARY CONCRETE BARRIER |
| • IMPACT ATTENUATOR, TEMPORARY (NON-REDIRECTIVE) | TEMPORARY CONCRETE BARRIER WITH 36" GLARE SCREEN |
| • IMPACT ATTENUATOR, TEMPORARY (NARROW, REDIRECTIVE) | SIGN REFERENCE NUMBER (SEE SIGN SCHEDULE) |
| •TCP• SIGN INCLUDED IN TRAFFIC CONTROL & PROTECTION (SEE SIGN SCHEDULE) | •XX-X |



ADVANCED SIGNING ON EB I-74. SEE EASTBOUND ADVANCED SIGNING DETAIL

ADVANCED SIGNING ON EB I-474. SEE EASTBOUND ADVANCED SIGNING DETAIL

EASTBOUND ADVANCED SIGNING DETAIL
NOT TO SCALE



FILE NAME = D468620-sh1-staging02 174-03.dgn	DESIGNED - HTL	REVISED -		STATE OF ILLINOIS DEPARTMENT OF TRANSPORTATION	MAINTENANCE OF TRAFFIC STAGE 3A	F.A.I. RTE. = 90-[14R(14HB-4,14,14HVB)BR]	SECTION = TAZEWELL	COUNTY =	TOTAL SHEETS = 2433	SHEET NO. = 614
USER NAME = TERRA	DRAWN - JPS	REVISED -				CONTRACT NO. 68620	ILLINOIS FED. AID PROJECT			
PLOT DATE = 7/16/2012	CHECKED - DA/LVA	REVISED -				SCALE: SHEET NO. 8 OF 54 SHEETS	STA. - TO STA. 456+00			
DATE = 7/20/2012	DATE = 7/20/2012	REVISED -				* 74 & 155				