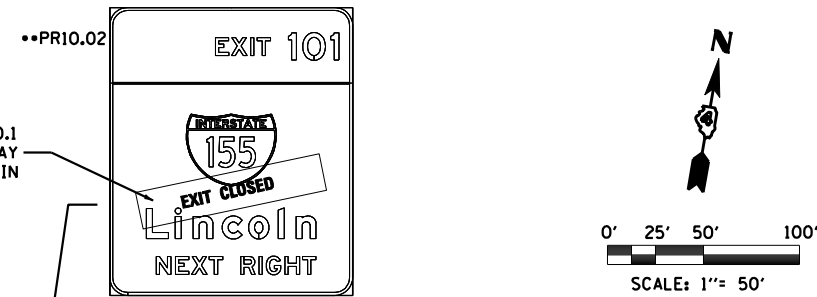
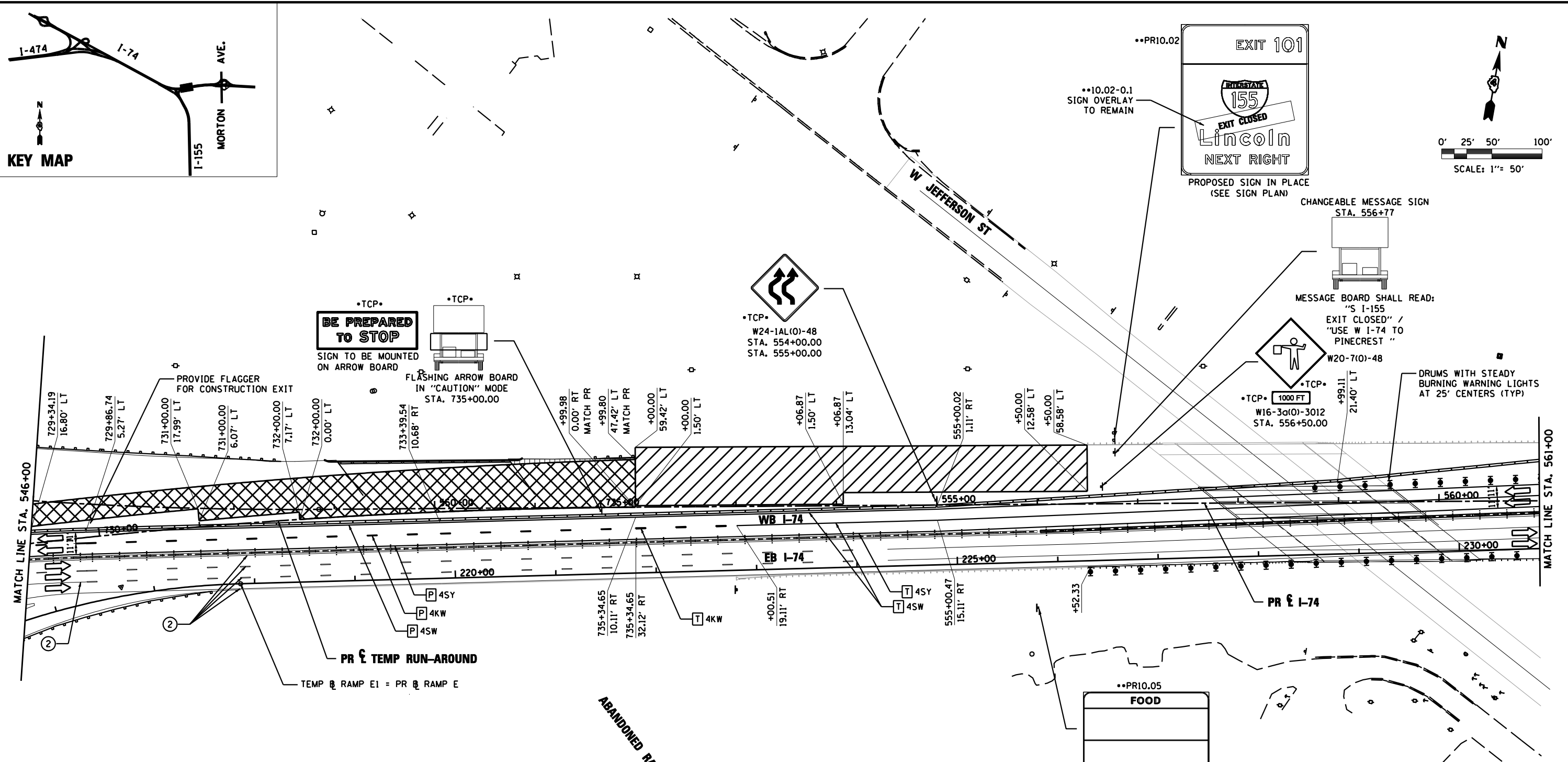


KEY MAP



- LEGEND**
- DRUMS WITH STEADY BURNING WARNING LIGHTS
 - ➔ DIRECTION INDICATOR
 - ⊕ BARRICADE WITH STEADY BURN MONODIRECTIONAL LIGHT
 - ▬ VERTICAL DELINEATOR PANELS
 - ⊥ BARRICADE, TYPE III
 - ⬆ FLASHING ARROW BOARD
 - ➔ DIRECTION OF TRAFFIC FLOW
 - ⊕ IMPACT ATTENUATOR, TEMPORARY (NON-REDIRECTIVE)
 - ⊕ IMPACT ATTENUATOR, TEMPORARY (NARROW, REDIRECTIVE)
 - TCP• SIGN INCLUDED IN TRAFFIC CONTROL & PROTECTION (SEE SIGN SCHEDULE)
 - XX-X SIGN REFERENCE NUMBER (SEE SIGN SCHEDULE)
 - ▨ TEMPORARY PAVEMENT CONSTRUCTION
 - ▨ ON-GOING EARTHWORK FOR PROPOSED PAVEMENT
 - ▨ PROPOSED PAVEMENT CONSTRUCTION
 - ▨ TEMP PVMT REMOVAL (SEE REMOVAL PLAN FOR EX PVMT REMOVAL)
 - ▬ REM TEMP AGGREGATE SHOULDERS
 - ▬ AGGREGATE SHOULDERS, TYPE B 6"
 - ▬ TEMPORARY CONCRETE BARRIER
 - ▬ TEMPORARY CONCRETE BARRIER WITH 36" GLARE SCREEN

- PAVEMENT MARKING LEGEND**
- | | | |
|---|---|-------------------------------------|
| ① EXISTING PAVEMENT MARKING | 4SW 4" SOLID WHITE | 8SW 8" SOLID WHITE |
| ② PAVEMENT MARKING FROM PREVIOUS STAGE | 4SY 4" SOLID YELLOW | 12SW 12" SOLID WHITE @ 20" SPACING |
| ③ PROPOSED PAVEMENT MARKING IN PLACE (SEE PROPOSED PAVEMENT MARKING PLAN) | 4SYY 4" SOLID DOUBLE YELLOW (11" C-C) | 12SY 12" SOLID YELLOW @ 20" SPACING |
| T PAVEMENT MARKING TAPE, TYPE III | 4KW 4" SKIP-DASH WHITE (30" SKIP, 10' DASH) | 24SW 24" SOLID WHITE STOP BAR |
| P POLYUREA PAVEMENT MARKING TYPE II | 4DW 4" DOTTED WHITE (9' SKIP, 3' DASH) | LSW LETTERS AND SYMBOLS, WHITE |

FILE NAME = D468620-sh1-staging10 174-07.dgn	DESIGNED - HTL	REVISED -		STATE OF ILLINOIS DEPARTMENT OF TRANSPORTATION	MAINTENANCE OF TRAFFIC STAGE 7A	F.A.I. RTE. = 90-[14R(14HB-4,14,14HVB)BR]	SECTION = TAZEWELL	COUNTY =	TOTAL SHEETS = 2433	SHEET NO. = 888			
USER NAME = TERRA	DRAWN - JPS	REVISED -				SCALE: 1" = 50'	SHEET NO. 10 OF 11 SHEETS	STA. 546+00 TO STA. 561+00	CONTRACT NO. 68620		ILLINOIS FED. AID PROJECT		
PLOT DATE = 7/16/2012	CHECKED - DA/LVA	REVISED -				• 74 & 155							
	DATE - 7/20/2012	REVISED -											